



Fall & Associates

Stake and Elevation Service

719 W. 5th Street

P.O. Box 404

Concordia, KS. 66901

1-800-536-2821

Date 2-19-14

Invoice Number 0212141

GORE OIL COMPANY

Operator

1

Number

Simpson Trust

Farm Name

Rooks-KS

County-State

12

S

9s

T

18w

R

600'FNL 500'FWL

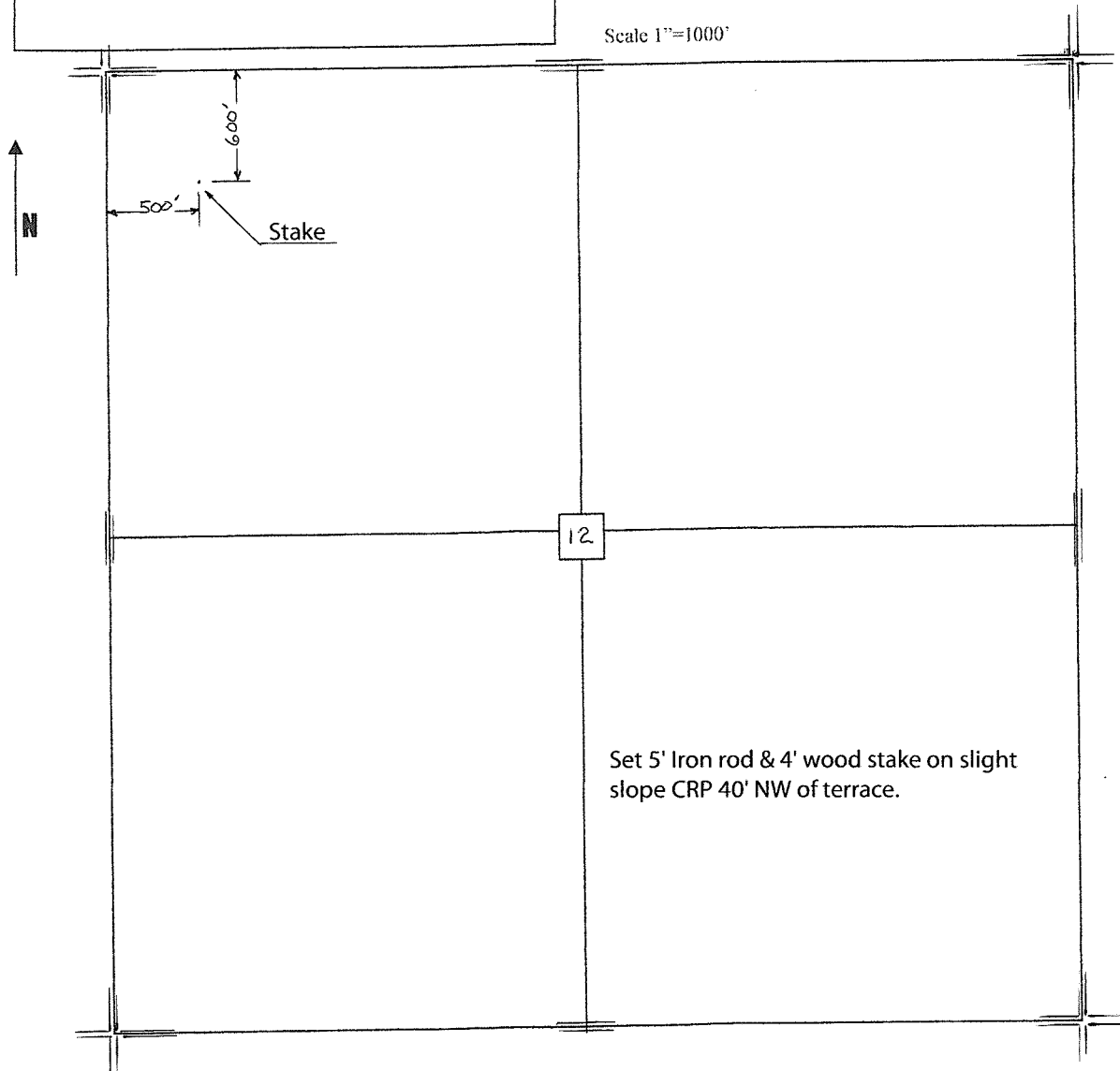
Location

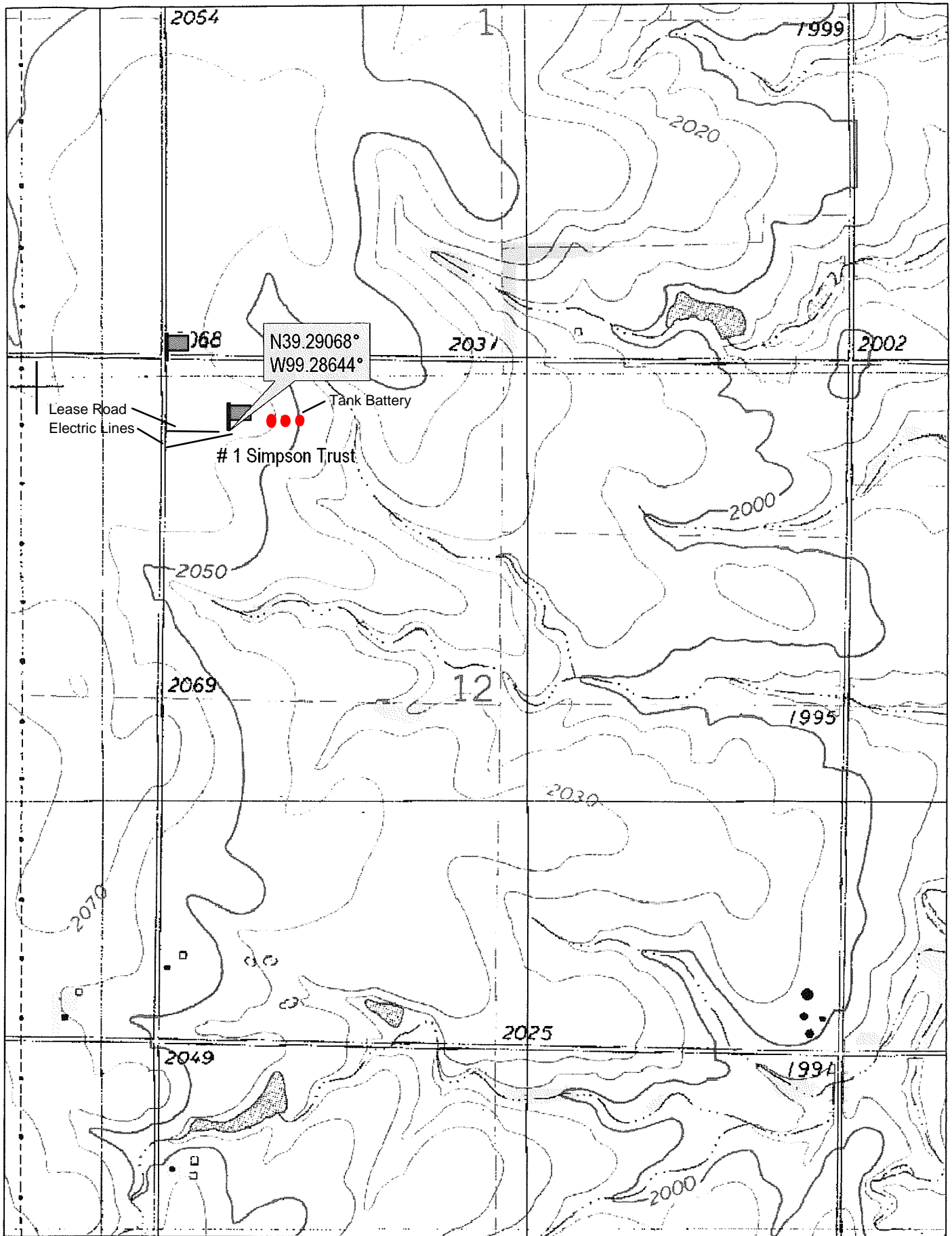
Elevation 2059 Gr.

Ordered By: Becky

Gore Oil Company
P.O. Box 2757
Wichita, KS. 67201

Scale 1"=1000'





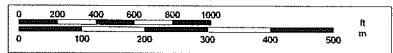
N39.29068°
W99.28644°

Lease Road
Electric Lines

1 Simpson Trust

Tank Battery

Scale 1 : 12,000
1" = 1000 ft



© 2002 DeLorme, 3-D TopoQuads®. Data copyright of content owner.
www.delorme.com