

A.P.T. # 15-195-22900-0000

GEOLOGICAL REPORT
 DRILLING TIME AND SAMPLE LOG

COMPANY Reilly Oil Company, Inc.
 LEASE Linda #1-19
 FIELD _____
 LOCATION 1205' FNL + 606' FWL
 SEC 19 TWSP 11s RGE 24W
 COUNTY Trego STATE Kansas

ELEVATION
 KB 2499'
 DF 2497'
 GL 2494'
 Depths Measured From
 Log KB Drilling KB

CONTRACTOR WW Drilling Rig #6
 SPUD 12-19-13 COMP 1-9-14
 SAMPLES SAVED FROM 3550' TO A.T.D.

CASING
 Surface 8 5/8" @ 211'
 Production None
 ELECTRIC LOGS
Nabors

FORMATION TOPS AND STRUCTURAL POSITION

FORMATION	SAMPLE	E. LOG	DATUM <i>E. log</i>	A	B	C	D
				-0-	•		
Anhydrite	2096	2095 +	404	+ 405	+ 401		
Base Anhydrite	2142	2139 +	360	+ 365	+ 360		
Topeka	3576	3576 -	1077	-1074	-1074		
Heebner	3801	3801 -	1302	-1301	-1298		
Toronto	3822	3822 -	1323	-1322	-1319		
Lansing	3835	3835 -	1336	-1335	-1331		
Base Kansas City	4072	4072 -	1573	-1564	-1565		
Total Depth	4109	4112 -	1613	-1586	-1770		

REFERENCE WELLS

- A Xplor Energy Corp. Scanlon #3-19 SW-NW-NE Sec. 19-11s-24W
- B Xplor Energy Corp. Scanlon #2-19 NE-NW-NE Sec. 19-11s-24W
- C
- D

REMARKS

This well ran 1-5 feet lower on the Lansing top than the reference wells. After reviewing the suite of open hole logs and P.S.T. data it was decided no further testing was warranted. The well was plugged and abandoned.

Richard B. Bell
1-9-14

7502

LEGEND

- 

Anhydrite
- 

Salt
- 

Sandstone
- 

Shale
- 




Carb sh
- 

Limestone
- 

Ool. Lime
- 

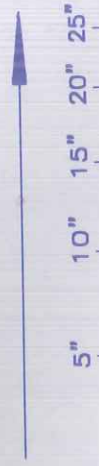
Chert
- 

Dolomite

DEPTH	LITHOLOGY	SAMPLE DESCRIPTIONS	OIL SHOWS	REMARKS
2090				
2100				
20				

DRILLING TIME IN MINUTES
PER FOOT

Rate of Penetration Decreases



LOG 7710



40

40

3450

3500



ECG

ECG

ECG

3600

-conn

LS: wh-tn sli. cky-fsln dns

Sh: gry, Tr. blk Carb. sh

LS: wh-tn cky-fsln ppφ Tr.
friable N.S.O. Tr. Δ tn

20

LS: tn gry fsln ppφ N.S.O.

Sh: gry, brn

LS: tn gry fsln fsln dns

40

Tr. Δ tn
Sh: gry + brn

LS: wh-tn cky-fsln ool ppφ
N.S.O.

60

LS: tn gry fsln dns

-conn

LS: wh-tn cky-fsln-sli. suc.
friable ppφ N.S.O.

80

LS: wh-tn miy-cky-fsln dns
Sh: blk carb.
LS: tn fsln dns

Sh: brn + gry

Tr. S.S. gry v. fn. gn consol.
ingran φ N.S.O.

3700

-conn

LS: wh-tn cky-fsln ppφ
friable N.S.O.

20

LS: wh-tn cky-fsln ool ppφ
friable N.S.O.
Sh: gry + brn

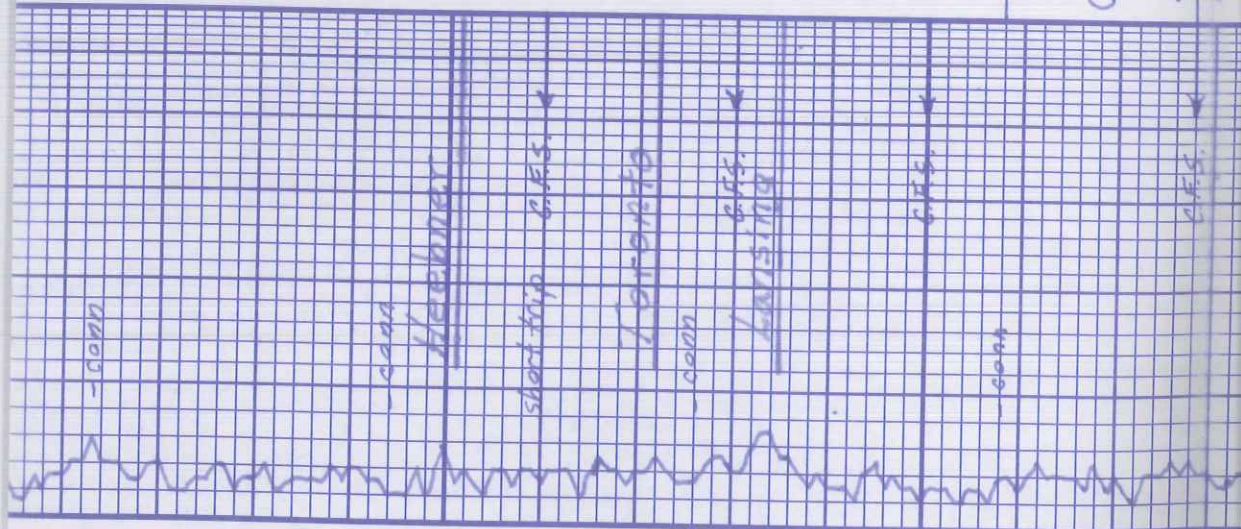
-conn

Sh: gry + brn

LS: wh-tn sli. cky-fsln ppφ
N.S.O.
Blk Carb. sh.

40

LS: wh-tn cky-fsln sli. ool
ppφ Tr. Dol. fsln inx ppφ
N.S.O.



60	LS: wh-ta slicky-fxln tr sli. ool pppt Δ ty wh-ta
80	LS: wh-ta fxlh-sli-fslf sli ool w/ pass inclus pppt N.S.O. Δ wh-ta sh: gryt brn V. cky
3800	Ls: wh-ta - Lt. gry v. cky- fslf dns Sh: blk Carb Ls: tn fslf dns.
20	Sh: gry slty, gryt brn
40	Ls: wh-ta cky-fxln sli-fslf Sli: pyritic pppt friable N.S.O. No odor No odor Δ wh-ta sh: gryt brn Ls: wh-ta cky-fxln sli. ool pppt N.S.O. Δ ty wh-ta
60	Ls: wh-ta cky-fxln dns sh: gryt brn
80	Ls: wh-ta fxlh-sli-fslf ool w/ pass inclus. pppt - impat @ fr o str fr pppt - No odor tr Δ wh-ta

strap 3891.00
Board 3890.56
Diff. .44
Incline @ 3878' 3/4°
Diamond Testing
DST #1 3858'-3878'
30-60-30-60
IF: 8.0 B. in 7 min.
ISI: Surface blow
FF: 8.0 B. in 13 min.
FSI: No blow
Recovery: 420' Total
15' C.O. gravity 25° A.P.I.
405' Wtr. 95,000 ppm
HYD: 1839-1836#
FP: 39-141/149-208#
BHP: 1049-1009#
BHTemp: 122°F.
DST #2 3878'-3900'
30-60-30-60
IF: wk blow incr. to 4"
FF: wk blow incr. to 2"
Recovery: 70' MCW
81% W, 19% M
HYD: 1860-1858#

FF: wk blow meter to 4 1/2"
 Recovery: 145' Total
 5' C.O. gravity N.R.
 140' OSMCW 170, 722 W,
 HYD: 1937-1938
 FP: 6-49/55-73#
 BHP: 1146-1145#
 BH Temp: 113°F
 Chlorides: 85,000 ppm

Sh: brn + gry	
LS: wh-to cky-fs/f pp φ-Tr Vg φ Lt. gray to 2 ft fr. O set abund floating F.A No odor	
Sh: brn + gry	
LS: wh-to cky-fs/f Tr 001 pp φ Tr Lt. Δ str pp F.A. on crushing Tr. tary 8.5th No odor Tr Δ Tr	
LS: tn-lt. gry fx ln dms	
sh: gry + brn	
Sh: brn shly sd brn Tr S.S. gry fn. gm. Consol. ingran φ N.S.O.	
Sh: brn + gry	
LS: wh-to fx ln dms N.S.O. Tr Δ Tr	

20 ' J
 40 ' K
 60 ' L
 80
 4100
 20

