

KIM B. SHOEMAKER

CONSULTING GEOLOGIST

316-684-9709 * WICHITA, KS

GEOLOGIST'S REPORT

DRILLING TIME AND SAMPLE LOG

COMPANY L. D. DRILLING, INC.

LEASE § 2-16 FLOREINE

FIELD LAUD WEST

LOCATION 968' FSL & 1442' FEL

SEC 16 TWP 18s RGE 14w

COUNTY BARTON STATE KANSAS

CONTRACTOR PETROMARK DRILLING RIG 2

SPUD 11-1-13 COMP 11-9-13

RTD 3550 LTD 3552

MUD UP 2800 TYPE MUD CHEMICAL

ELEVATIONS

KB 1938

DF _____

GL 1933

Measurements Are All From 1938 KB

CASING SURFACE 8 5/8" @ 897'

PRODUCTION 5 1/2" @

ELECTRICAL SURVEYS
DUAL IND., DENS., N. MUD, SONIC

SAMPLES SAVED FROM 3000 TO 3550

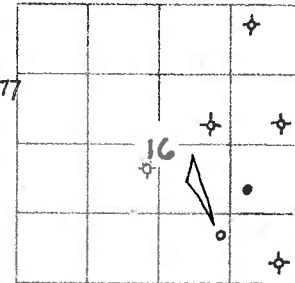
DRILLING TIME KEPT FROM 2800 TO 3550

SAMPLES EXAMINED FROM 3000 TO 3550

GEOLOGICAL SUPERVISION FROM 3150 TO 3550

GEOLOGIST ON WELL KIM B. SHOEMAKER

FORMATION TOPS	LOG	SAMPLES
ANHYDRITE	885+1053	881+1057
B/ANH.	913+1025	905+1033
TOPEKA	2879-941	2876-938
HEEBNER	3120-1182	3115+ 1177
BROWN LIME	3193-1255	3190-1252
LANSING	3203-1265	3200-1262
B/KC	3408-1970	3406-1968
ARBUCKLE	3436-1498	3438-1500



API: 15-009-25893

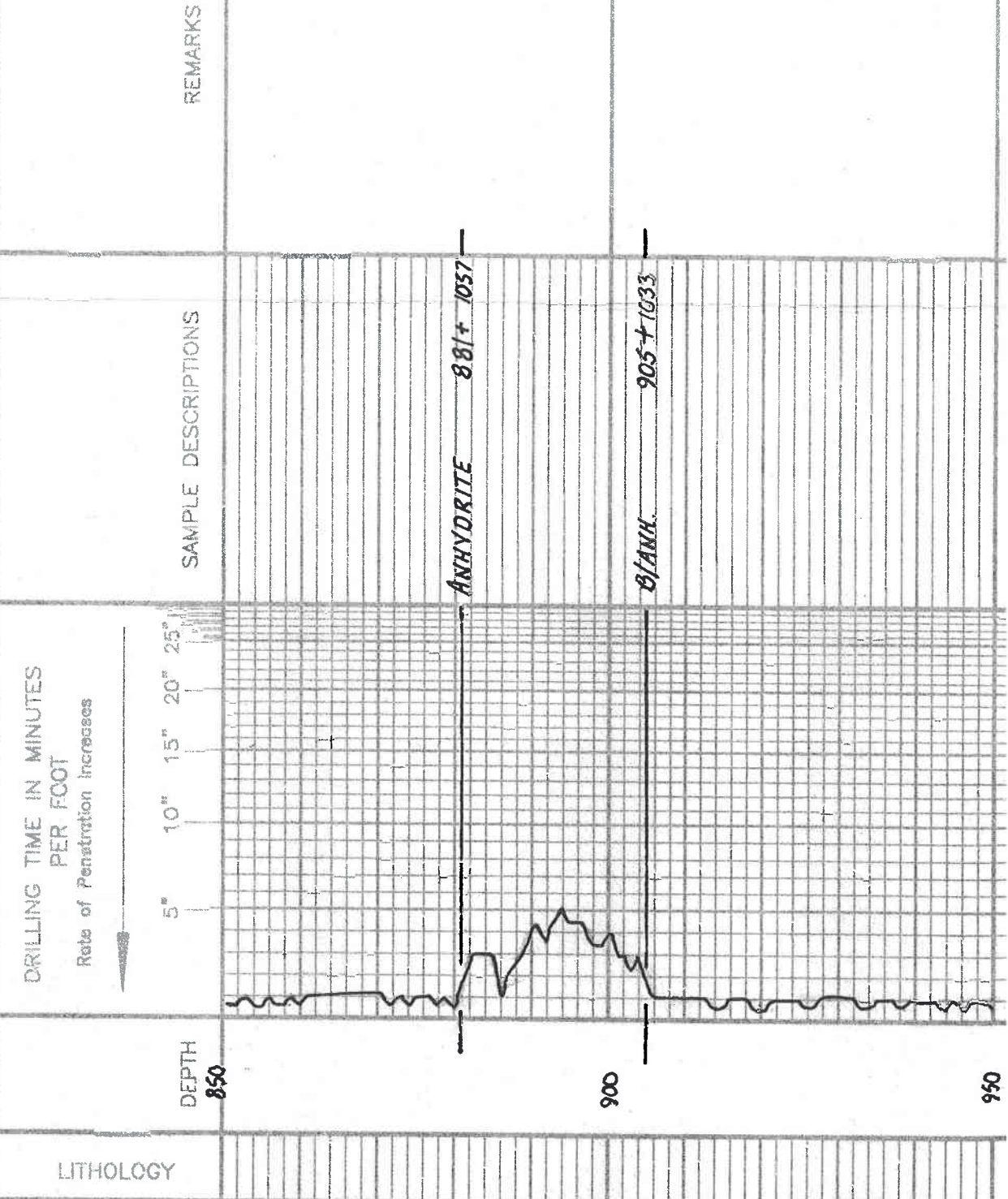
REMARKS

- 11-1-13 SPUD
- 11-2 @ 870'
- 11-3 @ 1360'
- 11-4 @ 1360'
- 11-5 @ 1885'
- 11-6 @ 2839'
- 11-7 @ 3400'
- 11-8 @ 3450'
- 11-9 @ 3550'

LEGEND

- Dolomite
- Chert
- Ool. Lime
- Limestone
- Carb sh
- Shale
- Sandstone
- Salt
- Anhydrite

SHOE01-06



DEPTH
850

900

950

LITHOLOGY

REMARKS

SAMPLE DESCRIPTIONS

3100

HEEBNER 3115-1177

V Heebner 1176

TORONTO

DOUGLASS

LS. Tackly. VSI 1988

Sh. L.L. 1161

LS. Tackly. VSI 1988

Sh. L.L. 1161

Sh. L.L. 1161

BROWN LIME 3190-1252

LS. R. VSI 1988

3200

LANSING 3200-1262

LS. W. VSI 1988 P. DAPI
LS. R. VSI 1988 P. DAPI

LS. Tackly. VSI 1988

LS. Tackly. VSI 1988

LS. Tackly. VSI 1988

Sh. L.L. 1161

LS. Tackly. VSI 1988

LS. Tackly. VSI 1988

LS. Tackly. VSI 1988

LS. Tackly. VSI 1988

3300

DST (1) 3322-3400

STOP: Bottom bucket 5 1/2 min

STOP: " " 5 MIN.

STOP: " " 5 MIN.

STOP: " " 5 MIN.

STOP: " " 5 MIN.

STOP: " " 5 MIN.

STOP: " " 5 MIN.

STOP: " " 5 MIN.

STOP: " " 5 MIN.

STOP: " " 5 MIN.

STOP: " " 5 MIN.

STOP: " " 5 MIN.

STOP: " " 5 MIN.

STOP: " " 5 MIN.

STOP: " " 5 MIN.

STOP: " " 5 MIN.

STOP: " " 5 MIN.

STOP: " " 5 MIN.

STOP: " " 5 MIN.

STOP: " " 5 MIN.

STOP: " " 5 MIN.

STOP: " " 5 MIN.

STOP: " " 5 MIN.

STOP: " " 5 MIN.

STOP: " " 5 MIN.

STOP: " " 5 MIN.

STOP: " " 5 MIN.

STOP: " " 5 MIN.

STOP: " " 5 MIN.

STOP: " " 5 MIN.

STOP: " " 5 MIN.

STOP: " " 5 MIN.

3400

DST (2)

VSI 52 WT 93

WT 82 CM 3000

WT 82 CM 3000

WT 82 CM 3000

WT 82 CM 3000

WT 82 CM 3000

WT 82 CM 3000

LS. Tackly. VSI 1988

LS. Tackly. VSI 1988

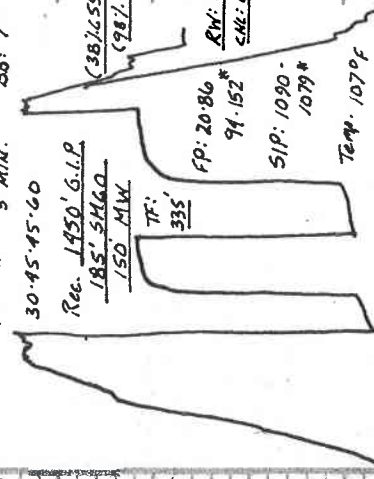
LS. Tackly. VSI 1988

LS. Tackly. VSI 1988

LS. Tackly. VSI 1988

LS. Tackly. VSI 1988

LS. Tackly. VSI 1988



DST (2) 3322-3450

STOP: Bottom bucket 1 MIN.

STOP: " " 2 "

STOP: " " 2 "

STOP: " " 2 "

STOP: " " 2 "

STOP: " " 2 "

30:45:45.60

Rec. 150' G.L.P.

2020 GGO

120' MABCK

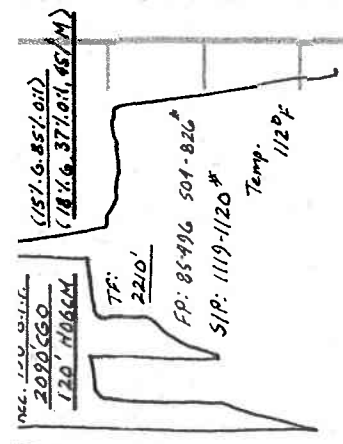
372

372

372

372

372



Sh. wt. 814 w/ RLSk Zener

Sh. RI

A Yellow Page

Sh. wt. 814

ARBUCKLE 3438-1500

Dol. wt. 170g, 18-Coxh, F.Xh, b
Solid at 100' Sh. 15500 Duff Floor. V.M. odor

Dol. wt. 170g, 18-Coxh, F.Xh, b
Duff Floor. 15500 Duff Floor. V.M. odor

Dol. wt. 170g, 18-Coxh, F.Xh, b
R. Sp. 15500 Duff Floor. V.M. odor

Dol. wt. 170g, 18-Coxh, F.Xh, b
R. Sp. 15500 Duff Floor. V.M. odor

Dol. wt. 170g, 18-Coxh, F.Xh, b
R. Sp. 15500 Duff Floor. V.M. odor

Dol. wt. 170g, 18-Coxh, F.Xh, b
R. Sp. 15500 Duff Floor. V.M. odor

Dol. wt. 170g, 18-Coxh, F.Xh, b
R. Sp. 15500 Duff Floor. V.M. odor

Dol. wt. 170g, 18-Coxh, F.Xh, b
R. Sp. 15500 Duff Floor. V.M. odor

Dol. wt. 170g, 18-Coxh, F.Xh, b
R. Sp. 15500 Duff Floor. V.M. odor

Dol. wt. 170g, 18-Coxh, F.Xh, b
R. Sp. 15500 Duff Floor. V.M. odor

Dol. wt. 170g, 18-Coxh, F.Xh, b
R. Sp. 15500 Duff Floor. V.M. odor

Dol. wt. 170g, 18-Coxh, F.Xh, b
R. Sp. 15500 Duff Floor. V.M. odor

Dol. wt. 170g, 18-Coxh, F.Xh, b
R. Sp. 15500 Duff Floor. V.M. odor

Dol. wt. 170g, 18-Coxh, F.Xh, b
R. Sp. 15500 Duff Floor. V.M. odor

Dol. wt. 170g, 18-Coxh, F.Xh, b
R. Sp. 15500 Duff Floor. V.M. odor

Vis: 51
WT: 91
ML: 88
CAL: 4000

3500

100 200 300 400 500 600 700 800 900 1000

