

GEOLOGIST'S REPORT

DRILLING TIME AND SAMPLE LOG

COMPANY Brito Oil Company, Inc.

LEASE Detmer-Wilkens #1-32

FIELD _____

LOCATION 2640' FNL + 330' FWL

SEC 32 TWP 6S RGE 19W

COUNTY Rooks STATE Ks

CONTRACTOR W.W. Drilling, Rig 6

SPUD 1-15-14 COMP 1-23-14

RTD 3630 LTD _____

MUD UP 3000' TYPE MUD Chem

ELEVATIONS

KB 2648'

DF _____

GL 2043'

Measurements Are All
From KB

CASING
SURFACE 8 5/8" @ 218

PRODUCTION _____

ELECTRICAL SURVEYS

DI, Comp D₆, MR

SAMPLES SAVED FROM 3000 TO RTD

DRILLING TIME KEPT FROM 2900 TO RTD

SAMPLES EXAMINED FROM 3000 TO RTD

GEOLOGICAL SUPERVISION FROM 3000 TO RTD

GEOLOGIST ON WELL Ken Wallace

FORMATION TOPS LOG SAMPLES

FORMATION TOPS	LOG	SAMPLES
Anhydrite	1607 (+44)	1606 (+442)
B/Anh	1638 (+410)	1637 (+411)
Topeka	3026 (-978)	3026 (-978)
Heebner	3225 (-1177)	3226 (-1178)
Lansing	3264 (-1216)	3267 (-1219)
B/Kc	3488 (-1440)	3486 (-1438)
Arbuckle	3540 (-1492)	3536 (-1488)
Reagan	3593 (-1545)	3594 (-1546)
Granite Wash	3610 (-1562)	3614 (-1566)

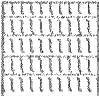
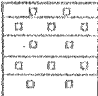
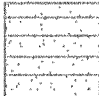

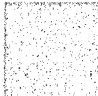
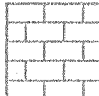
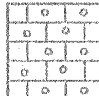
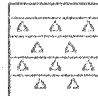
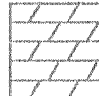
32

REMARKS Negative DSTS - Plugged & Abd

Ken Wallace

1-15-14 MIRU. Set 8 5/8" @ 218' w/ 150 SX
 1-16-14 Drlg @ 494'
 1-17-14 Drlg @ 2357'
 1-18-14 Drlg @ 3137'
 1-19-14 Drlg @ 3310'
 1-20-14 OOH w/ DST #3
 1-21-14 OOH w/ DST #5
 1-22-14 Running DST #7
 1-23-14 Ran Log. P&A

LEGEND

								
Anhydrite	Salt	Sandstone	Shale	Carb sh	Limestone	Ool.Lime	Chert	Dolomite

SCALE " = 100'

DRILLING TIME - Minutes Per Foot
Rate of Penetration Decreases

SAMPLE DESCRIPTIONS

REMARKS

1600
20
40
60
3000
20
40
60
80
3100
20

Anhydrite 1606 (+442)

B/ Anhydrite 1637' (+411)

Topeka 3026' (-978)

(50)

© CFS 3088'

sh, gy-dkgy

Ls, buff, foss, grny, foss
(dkgy foss-gastrop), NS

Ls, buff, vfgd, foss, NS

Ls, buff, ool, foss, sptd str,
SSFO (hvy oill f-p ppt φ,
p v g φ, NO, NFL

sh, bl
sh, itgg, vcalc

Ls, buff-tan, ool, foss,
NS

Vis 70+
wt 8.9
LCM 2#

Ls, ltgy-wh, ool, foss,
dkgy mtd, cky, NS

AA

sh, bl

Ls, tan-brwn, vargl; sh,
red, gy

40
60
80
3200
20
40
60
80
3300
20
40



(50)
(50)
(50)
(50)
(50)
(50)

Heebner 3226'
(-1178)

Lansing 3267'
(-1219)

⊙ CFS 3215'

⊙ CFS 3262'

⊙ CFS 3285'

⊙ CFS 3316'

⊙ CFS 3331'

⊙ CFS

sh, red, gy
Ls, wh-ltgy, cky, pyr,
NS
sh, red, gy
sh, bl
Ls, brwn, m-fxl, cky,
NS
Ls, tan, ool, foss, fugφ,
vssfo, slod, 5% sptd
stn, sm dd stn, NFL
Ls, ltgy-wh, vaty
sh, bl
sh, red, gy, grn, pyr
Ls, wh, ool, foss, dse,
fw pcs fugφ, ssfo, 45%
stn, NO, NFL
sh, red, gy
Ls, wh, ool, foss, pugφ, IGB,
ssfo, 20% sptd stn,
gd od, sm GB, tr brite FL
15" AA, 40% stn, ssfo,
vstrg od
sh, bl
sh, red, grn, gy, foss
Ls, tan, ool, foss, pugφ,
ssfo, 2 pcs GSB, edge
stn (10%), pFL, NO
15" Ls, tan, fxl-dse,
cky, NS
Ls, wh-ltgy, sl ool, dse,
foss, p-fugφ, ssfo,
100% sptd stn, slod,
tr FL
Ls, wh ool, foss, cky-dse,
ppptφ (trite), ssfo,
15% stn, slod, tr FL

lc tan. fxl-dse. cky

change chart

Vis 65
wt 9.2
LCM 2#

60
80
3400
20
40
60
80
3500
20
40
60



3355'
Muncie ck 3384' (-1336)
VSSO
CFS 3408'
SO
CFS 3428'
SO
Starts 3447' (-1399)
CFS 3446'
SO
BKC 3486' (-1438)
CFS 3478'
SO
Arbuckle 3526' (-1488)
CFS 3541'
CFS 3547'
CFS 3555'
CFS 3565'

NS
Ls, wh-tan, sl ool, cky,
NS
Ls, Hgy - fmxb, cky,
sl Aty, NS
sh, bl
sh, grn, red, gy; sm argl
Ls
Ls, Hgy, fx-grny, vAty,
tr sptd stn, tr fo, NFD,
NO, NFL
CFS 3408'
sh, gy, red
Ls, buff, sl ool, foss, f-p
vg φ, FSFO/GB, sptd
stn (20%), sm sat stn,
FFL,
15" Ls, tan, cky, sptd stn,
tr fo, tr vg φ, NO, NFL
CFS 3428'
Ls, tan-buff, vfxln, cky
ppt φ, tr vg φ, GSO, 30%
sptd stn, FFL, sl ool/w
tr oolm φ, NO
SO
15" Ls, buff, v foss, sl ool,
gd stn, VSSFO, pug φ
CFS 3446'
Ls, tan-buff, fxh, px φ,
pug φ, FSFO, 15% sptd
stn, NO, FFL
Vis 64
Wt 9.3
Lcm 2#
sh, bl
Ls, tan, sm brw, dse-cky
NS
sh, red, gy
Ls, gy, ool, foss, dk gy ool,
NS
Vis 65
Wt 9.3
Lcm 1 1/2#
sh, red, gy
Ls, red/gy, fgrnd, much
red sh, NS
Ls, wh, cxl, ool, fug φ, SSFO,
dk gy hvy oil, 30% stn, NO, NF
SO
Ls, AA, fso, gd sptd stn (60%)
ppt φ, pug φ, foss
SO
Dol, brun-gy, vtsucro, dse, Vis 59
1pc pug φ, dd stn, NFO, NO Wt 9.3
Dol, tan, dse, vtsucro, NS, NO Lcm 1 1/2
CFS 3547'
Dol, Hgy, m-c sucro, gd IG/
vg φ, BSFO, Fad, 15% stn, tr FFL.
CFS 3555'
3555-30" dol, AA, gd odor, 60% stn
45" AA
CFS 3565'
3565-15/30" - dol Hgy, c sucro
gd vg IG φ, BSFO, much asphalt
stn, gd od (50% stn), NFL
new na head

Vis 64
Wt 9.3
Lcm 2#
Vis 65
Wt 9.3
Lcm 1 1/2#
Vis 59
Wt 9.3
Lcm 1 1/2

80
3600
20
40

Reagan Sd 3594' ⁰CFS 3585' (-1546)

Granite Wash 3614' ⁰CFS 3605' (-1566)

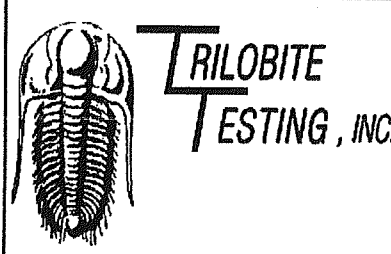
RTD 3630' ⁰CFS 3630' (-1582)

42 30-40% stn.
Dol, 17gy, g ug/ISD, NFO, dd
stn (1596), mostly barren
Fol, sandy at base

SS, cl-milky, well rad/srt'd,
v.g. laves, m-c grd, g IGB,
dol cement, sm pyr, NS, NP, NF

sh, brick red; ss dk pink,
p. srt'd, p rad, g, & biot
(weath biot); sm granite
clasts, pink, hard, NS, NF2, ND
AA, mor sandy, friable, sm
granite clasts, few indv large
sd grns, NF, NS, NO

Vis 52
Wt 9.3
LCM 1



TRILOBITE TESTING, INC.

DRILL STEM TEST REPORT

Brito Oil Company Inc **32-6s-19w Rooks**

1223 N. Wallace, BLDG. 1 **Dettmer-Wilkens#1-32**

Suite 100 **Job Ticket: 55475 DST#: 1**

Wichita Ks 67206 **Test Start: 2014.01.18 @ 20:05:51**

ATTN: Raul Brito, Ken Wall

GENERAL INFORMATION:

Formation: **Tor / LKC A**

Deviated: **No Whipstock:** ft (KB)

Time Tool Opened: **21:48:31**

Time Test Ended: **03:01:45**

Interval: **3221.00 ft (KB) To 3285.00 ft (KB) (TVD)**

Total Depth: **3285.00 ft (KB) (TVD)**

Hole Diameter: **7.85 inches** Hole Condition: **Fair**

Test Type: **Conventional Bottom Hole (Initial)**

Tester: **Ray Schwager**

Unit No: **70**

Reference Elevations: **2048.00 ft (KB)**
2043.00 ft (CF)

KB to GR/CF: **5.00 ft**

Serial #: 8369 Inside

Press@RunDepth: **170.66 psig @ 3225.00 ft (KB)**

Capacity: **8000.00 psig**

Start Date: **2014.01.18** End Date: **2014.01.19**

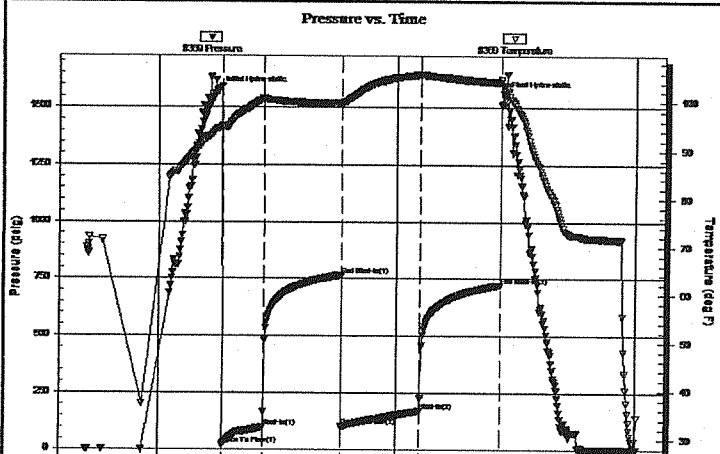
Start Time: **20:05:51** End Time: **03:01:45**

Last Calib.: **2014.01.19**

Time On Btm: **2014.01.18 @ 21:45:31**

Time Off Btm: **2014.01.19 @ 01:20:45**

TEST COMMENT: 30-IFP-w k to a strg bl 1" to bottom of bucket
60-ISIP-no bl bk
60-FFP-w k to a gd bl surface to a 6 1/2" bl
60-FSIP-no bl bk




PRESSURE SUMMARY

Time (Min.)	Pressure (psig)	Temp (deg F)	Annotation
0	1568.87	94.61	Initial Hydro-static
3	20.93	94.82	Open To Flow (1)
34	98.30	100.75	Shut-In(1)
93	764.32	99.82	End Shut-In(1)
93	101.88	99.63	Open To Flow (2)
152	170.66	105.69	Shut-In(2)
213	722.26	104.16	End Shut-In(2)
216	1551.29	103.45	Final Hydro-static

Recovery		
Length (ft)	Description	Volume (bbl)
240.00	Water	2.27
90.00	MW 40% M60%W	1.26

Gas Rates			
	Choke (inches)	Pressure (psig)	Gas Rate (Mcf/d)



TRILOBITE TESTING, INC

DRILL STEM TEST REPORT

Brito Oil Company Inc
 1223 N.Wallace, BLDG. 1
 Suite 100
 Wichita Ks 67206
 ATTN: Raul Brito, Ken Wall

32-6s-19w Rooks

Dettmer-Wilkens#1-32

Job Ticket: 56226 DST#: 2
 Test Start: 2014.01.19 @ 10:30:27

GENERAL INFORMATION:

Formation: LKC B-D
 Deviated: No Whipstock: ft (KB)
 Time Tool Opened: 12:04:37
 Time Test Ended: 15:26:21

Interval: 3292.00 ft (KB) To 3331.00 ft (KB) (TVD)
 Total Depth: 3331.00 ft (KB) (TVD)
 Hole Diameter: 7.85 inches Hole Condition: Fair

Test Type: Conventional Bottom Hole (Reset)
 Tester: Ray Schwager
 Unit No: 70

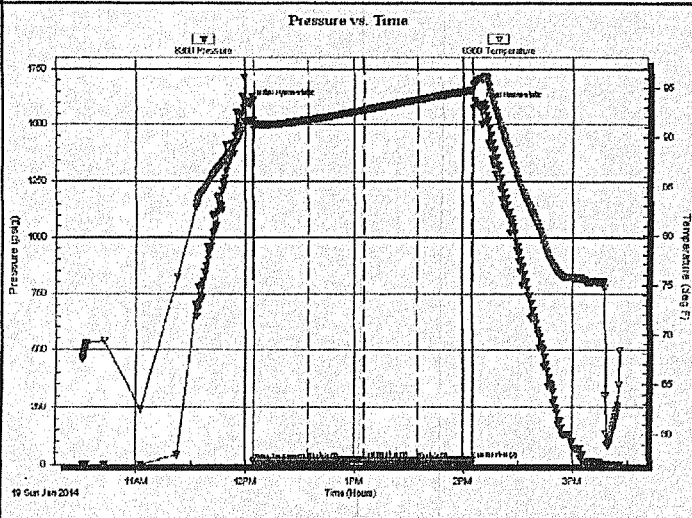
Reference Elevations: 2048.00 ft (KB)
 2043.00 ft (CF)
 KB to GR/CF: 5.00 ft

Serial #: 8369 Inside

Press@RunDepth: 15.66 psig @ 3299.00 ft (KB)
 Start Date: 2014.01.19 End Date: 2014.01.19
 Start Time: 10:30:27 End Time: 15:26:21

Capacity: 8000.00 psig
 Last Calib.: 2014.01.19
 Time On Btm: 2014.01.19 @ 12:02:22
 Time Off Btm: 2014.01.19 @ 14:08:22

TEST COMMENT: 30-IFP-surface bl, died in 20min
 30-ISIP-no bl bk
 30-FFP-no bl
 30-FSIP-bo bl bk



PRESSURE SUMMARY			
Time (Min.)	Pressure (psig)	Temp (deg F)	Annotation
0	1593.14	91.60	Initial Hydro-static
3	13.35	90.74	Open To Flow (1)
33	16.04	91.66	Shut-In(1)
63	20.91	92.72	End Shut-In(1)
64	14.63	92.72	Open To Flow (2)
93	15.66	93.79	Shut-In(2)
123	18.38	94.81	End Shut-In(2)
126	1586.27	95.92	Final Hydro-static

Recovery		
Length (ft)	Description	Volume (bbl)
1.00	Mud	0.00

Gas Rates			
	Choke (Inches)	Pressure (psig)	Gas Rate (Mcf/d)

* Recovery from multiple tests



**TRIOBITE
TESTING, INC.**

DRILL STEM TEST REPORT

Brito Oil Company Inc
1223 N.Wallace, BLDG.1
Suite 100
Wichita Ks 67206
ATTN: Raul Brito, Ken Wall

32-6s-19w Rooks

Dettmer-Wilkens#1-32

Job Ticket: 56227

DST#: 3

Test Start: 2014.01.20 @ 01:10:45

GENERAL INFORMATION:

Formation: **LKC H-I**

Deviated: No Whipstock: ft (KB)

Time Tool Opened: 02:45:25

Time Test Ended: 07:46:39

Test Type: Conventional Bottom Hole (Reset)

Tester: Ray Schwager

Unit No: 70

Interval: **3380.00 ft (KB) To 3428.00 ft (KB) (TVD)**

Total Depth: 3428.00 ft (KB) (TVD)

Hole Diameter: 7.85 inches Hole Condition: Fair

Reference Elevations: 2048.00 ft (KB)

2043.00 ft (CF)

KB to GR/CF: 5.00 ft

Serial #: 8369

Inside

Press@RunDepth: 55.75 psig @ 3392.00 ft (KB)

Start Date: 2014.01.20

End Date: 2014.01.20

Capacity: 8000.00 psig

Last Calib.: 2014.01.20

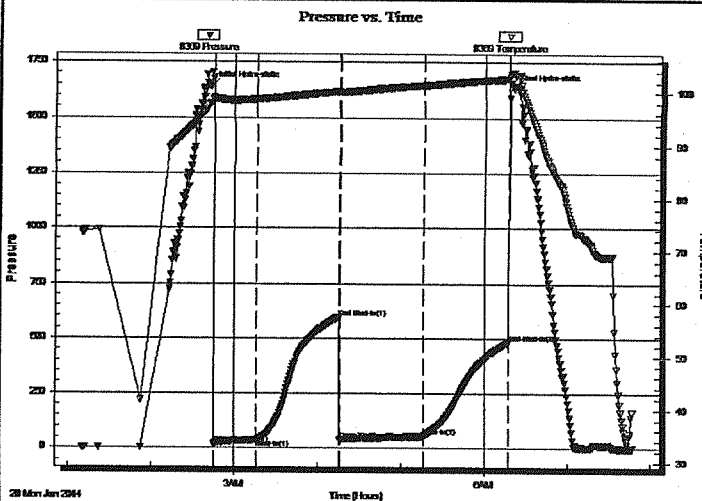
Start Time: 01:10:45

End Time: 07:46:39

Time On Btm: 2014.01.20 @ 02:42:55

Time Off Btm: 2014.01.20 @ 06:20:39

TEST COMMENT: 30-IFP-w k bl thru-out 1/2" to 1 1/2" bl
60-ISIP-no bl
60-FFP-w k bl thru-out surface to 1/2" bl
60-FSIP-no bl



PRESSURE SUMMARY

Time (Min.)	Pressure (psig)	Temp (deg F)	Annotation
0	1638.78	98.01	Initial Hydro-static
3	19.53	98.63	Open To Flow (1)
33	35.86	98.73	Shut-In(1)
93	594.75	100.20	End Shut-In(1)
93	38.10	100.07	Open To Flow (2)
153	55.75	101.41	Shut-In(2)
215	482.93	102.65	End Shut-In(2)
218	1633.55	103.79	Final Hydro-static

Recovery

Length (ft)	Description	Volume (bbl)
0.00	80'GIP	0.00
15.00	CO	0.07
60.00	MGO 10%G40%M50%O	0.30

* Recovery from multiple tests

Gas Rates

	Choke (inches)	Pressure (psig)	Gas Rate (Mcf/d)



**TRILOBITE
TESTING, INC**

DRILL STEM TEST REPORT

Brito Oil Company Inc

32-6s-19w Rooks

1223 N.Wallace,BLDG.1

Dettmer-Wilkens#1-32

Suite 100

Job Ticket: 56228

DST#: 4

Wichita Ks 67206

Test Start: 2014.01.20 @ 13:01:04

ATTN: Raul Brito, Ken Wall

GENERAL INFORMATION:

Formation: **LKC "J"**

Deviated: No Whipstock: ft (KB)

Time Tool Opened: 14:35:29

Time Test Ended: 17:58:28

Test Type: Conventional Bottom Hole (Reset)

Tester: Ray Schwager

Unit No: 70

Interval: **3428.00 ft (KB) To 3446.00 ft (KB) (TVD)**

Total Depth: 3446.00 ft (KB) (TVD)

Reference Elevations: 2048.00 ft (KB)

Hole Diameter: 7.85 inches Hole Condition: Fair

2043.00 ft (CF)

KB to GR/CF: 5.00 ft

Serial #: 8369

Inside

Press@RunDepth: 13.35 psig @ 3429.00 ft (KB)

Start Date: 2014.01.20

End Date:

2014.01.20

Capacity: 8000.00 psig

Start Time: 13:01:04

End Time:

17:58:28

Last Calib.: 2014.01.20

Time On Btm: 2014.01.20 @ 14:33:29

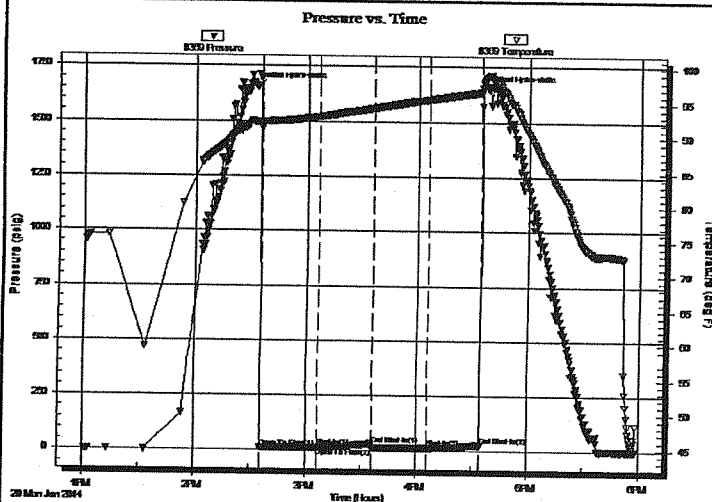
Time Off Btm: 2014.01.20 @ 16:37:59

TEST COMMENT: 30-IFP-surface bl, died in 8min

30-ISIP-no bl

30-FFP-no bl

30FSIP-no bl



PRESSURE SUMMARY

Time (Min.)	Pressure (psig)	Temp (deg F)	Annotation
0	1652.26	92.21	Initial Hydro-static
2	11.09	91.36	Open To Flow (1)
33	13.52	93.01	Shut-In(1)
63	29.54	94.28	End Shut-In(1)
63	12.24	94.29	Open To Flow (2)
93	13.35	95.54	Shut-In(2)
121	27.17	96.61	End Shut-In(2)
125	1643.81	98.99	Final Hydro-static

Recovery

Length (ft)	Description	Volume (bbl)
1.00	OCM 10%O90%M	0.00

* Recovery from multiple tests

Gas Rates

Choke (inches)	Pressure (psig)	Gas Rate (Mcf/d)



**TRILOBITE
TESTING, INC**

DRILL STEM TEST REPORT

Brito Oil Company Inc

32-6s-19w Rooks



1223 N.Wallace,BLDG.1
Suite 100
Wichita Ks 67206
ATTN: Raul Brito, Ken Wall

Dettmer-Wilkens#1-32

Job Ticket: 56229

DST#: 5

Test Start: 2014.01.21 @ 03:45:57

GENERAL INFORMATION:

Formation: **Marm. / Arbuckle**
Deviated: **No Whipstock** ft (KB)
Time Tool Opened: 05:36:52
Time Test Ended: 09:06:21

Test Type: **Conventional Bottom Hole (Reset)**
Tester: **Ray Schwager**
Unit No: **70**

Interval: **3498.00 ft (KB) To 3541.00 ft (KB) (TVD)**
Total Depth: **3541.00 ft (KB) (TVD)**
Hole Diameter: **7.85 inches** Hole Condition: **Fair**

Reference Elevations: **2048.00 ft (KB)**
2043.00 ft (CF)
KB to GR/CF: **5.00 ft**

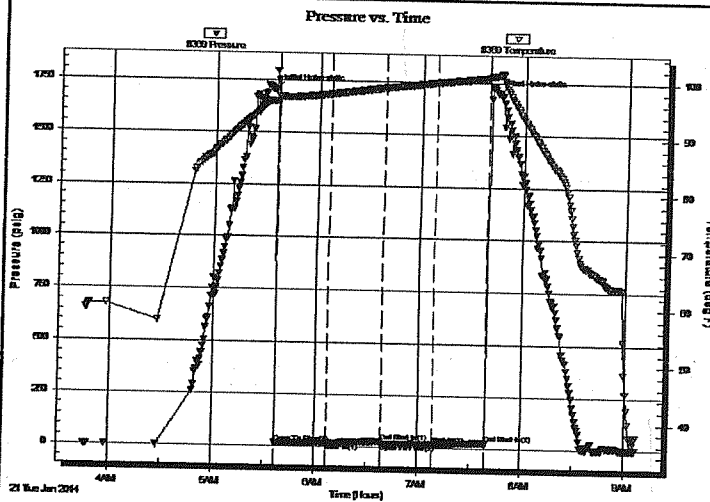
Serial #: 8369

Inside

Press@RunDepth: **21.25 psig @ 3505.00 ft (KB)**
Start Date: **2014.01.21** End Date: **2014.01.21**
Start Time: **03:45:57** End Time: **09:06:21**

Capacity: **8000.00 psig**
Last Calib.: **2014.01.21**
Time On Btm: **2014.01.21 @ 05:34:22**
Time Off Btm: **2014.01.21 @ 07:44:22**

TEST COMMENT: 30-IFP-w k bl thru-out 1/4" to surface bl
30-ISIP-no bl
30-no bl
30-FSIP-no bl



PRESSURE SUMMARY

Time (Min.)	Pressure (psig)	Temp (deg F)	Annotation
0	1706.44	96.37	Initial Hydro-static
3	18.20	96.37	Open To Flow (1)
33	20.50	97.67	Shut-In(1)
64	30.60	98.83	End Shut-In(1)
65	20.03	98.84	Open To Flow (2)
94	21.25	99.83	Shut-In(2)
125	28.60	100.74	End Shut-In(2)
130	1698.84	101.14	Final Hydro-static

Recovery

Length (ft)	Description	Volume (bbl)
5.00	MUD	0.02

* Recovery from multiple tests

Gas Rates

Choke (inches)	Pressure (psig)	Gas Rate (Mc/d)



TRILOBITE TESTING, INC

DRILL STEM TEST REPORT

Brito Oil Company Inc
1223 N.Wallace,BLDG.1
Suite 100
Wichita Ks 67206
ATTN: Raul Brito, Ken Wall

32-6s-19w Rooks

Dettmer-Wilkens#1-32

Job Ticket: 56230

DST#: 6

Test Start: 2014.01.21 @ 15:05:05

GENERAL INFORMATION:

Formation: **Arbuckle**
Deviated: **No Whipstock** ft (KB)

Time Tool Opened: 16:55:15

Time Test Ended: 22:47:29

Interval: 3526.00 ft (KB) To 3555.00 ft (KB) (TVD)

Total Depth: 3555.00 ft (KB) (TVD)

Hole Diameter: 7.85 inches Hole Condition: Fair

Test Type: Conventional Bottom Hole (Reset)

Tester: Ray Schwager

Unit No: 70

Reference Elevations: 2048.00 ft (KB)

2043.00 ft (CF)

KB to GR/CF: 5.00 ft

Serial #: 8369

Inside

Press@RunDepth: 104.79 psig @ 3532.00 ft (KB)

Start Date: 2014.01.21

End Date:

2014.01.21

Capacity: 8000.00 psig

Start Time: 15:05:05

End Time:

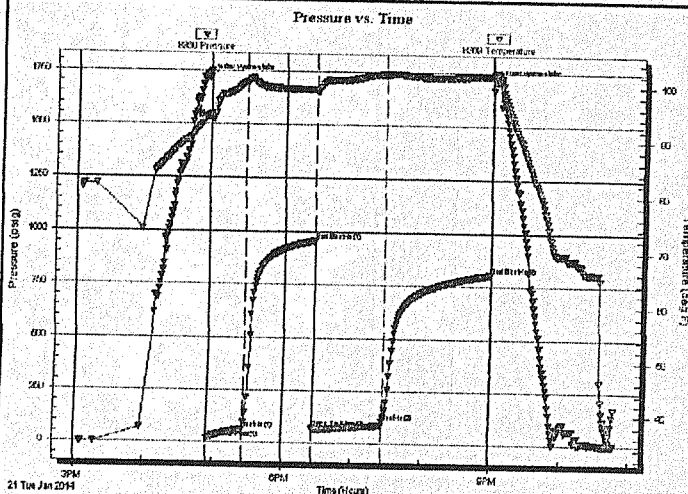
22:47:29

Last Calib.: 2014.01.21

Time On Btm: 2014.01.21 @ 16:53:15

Time Off Btm: 2014.01.21 @ 21:02:14

TEST COMMENT: 30-IFP-w k to a gd bl 1/2" to 6 1/2" bl
60-ISIP-surface bl bk
60-FFP-w k to a fr bl , surface to 5" bl
90-FSIP-no bl



PRESSURE SUMMARY

Time (Min.)	Pressure (psig)	Temp (deg F)	Annotation
0	1713.61	94.29	Initial Hydro-static
2	18.77	93.98	Open To Flow (1)
33	66.17	100.47	Shut-In(1)
93	957.56	99.13	End Shut-In(1)
94	74.37	98.74	Open To Flow (2)
154	104.79	101.99	Shut-In(2)
246	802.76	101.85	End Shut-In(2)
249	1703.77	102.49	Final Hydro-static

Recovery

Length (ft)	Description	Volume (bbl)
0.00	110'GIP	0.00
120.00	MGO 20%G30%M50%O	0.59
70.00	CO	0.98

* Recovery from multiple tests

Gas Rates

	Choke (Inches)	Pressure (psig)	Gas Rate (Mcf/d)



TRILOBITE TESTING, INC.

DRILL STEM TEST REPORT

Brito Oil Company Inc

32-6s-19w Rooks

1223 N.Wallace,BLDG.1

Dettmer-Wilkens#1-32

Suite 100

Job Ticket: 56231

DST#:7

Wichita Ks 67206

ATTN: Raul Brito, Ken Wall

Test Start: 2014.01.22 @ 04:00:57

GENERAL INFORMATION:

Formation: Arbuckle

Deviated: No Whipstock: ft (KB)

Time Tool Opened: 05:55:52

Time Test Ended: 11:52:36

Test Type: Conventional Bottom Hole (Reset)

Tester: Ray Schwager

Unit No: 70

Interval: 3548.00 ft (KB) To 3565.00 ft (KB) (TVD)

Total Depth: 3565.00 ft (KB) (TVD)

Hole Diameter: 7.85 inches Hole Condition: Fair

Reference Elevations: 2048.00 ft (KB)

2043.00 ft (CF)

KB to GR/CF: 5.00 ft

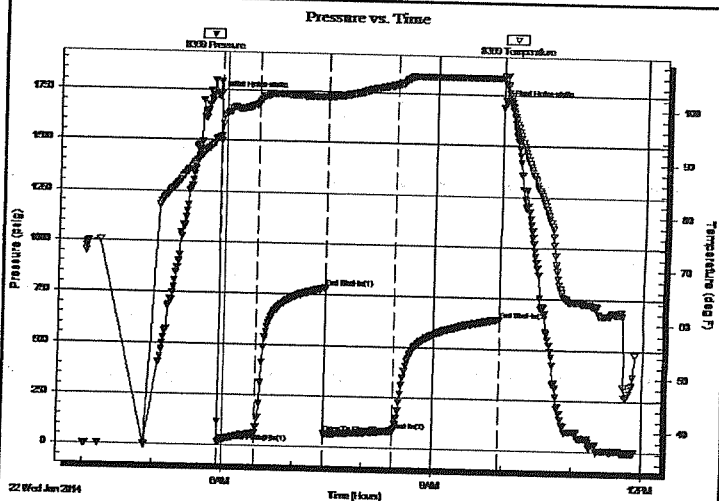
Serial #: 8369

Inside

Well ID: 0005 Inside
 Press@RunDepth: 86.18 psig @ 3549.00 ft (KB)
 Start Date: 2014.01.22 End Date: 2014.01.22
 Start Time: 04:00:57 End Time: 11:52:36

Capacity: 8000.00 psig
 Last Calib.: 2014.01.22
 Time On Btm: 2014.01.22 @ 05:53:07
 Time Off Btm: 2014.01.22 @ 09:58:51

TEST COMMENT: 30-IFP-wk to a fr bl 1" to 5" bl
 60-ISIP-no bl
 60-FFP-wk to a fr bl 1/4" to 3 1/2" bl
 90-FSIP-no bl



PRESSURE SUMMARY

Time (Min.)	Pressure (psig)	Temp (deg F)	Annotation
0	1720.74	93.59	Initial Hydro-static
3	18.23	93.95	Open To Flow (1)
35	59.44	100.21	Shut-In(1)
94	783.47	101.71	End Shut-In(1)
94	69.97	101.44	Open To Flow (2)
153	86.18	104.18	Shut-In(2)
244	646.99	105.70	End Shut-In(2)
246	1709.66	104.51	Final Hydro-static

Recovery

Length (ft)	Description	Volume (bbl)
30.00	MGO 15%G10%M75%O	0.15
215.00	CO	2.20

* Recovery from multiple tests

Gas Rates

	Choke (inches)	Pressure (psig)	Gas Rate (Mcf/d)