



DRILL STEM TEST REPORT

Prepared For: **Downing-Nelson Oil Co Inc**

PO Box 1019
Hays KS 67601

ATTN: Ron Nelson , Marc Do

Walt B #1-4

4-9s-24w Graham,KS

Start Date: 2014.02.08 @ 04:05:55

End Date: 2014.02.08 @ 11:12:19

Job Ticket #: 56239 DST #: 1

Trilobite Testing, Inc

PO Box 362 Hays, KS 67601

ph: 785-625-4778 fax: 785-625-5620

Printed: 2014.02.11 @ 09:15:18

Downing-Nelson Oil Co Inc
4-9s-24w Graham,KS
Walt B #1-4
DST # 1
LKC C-D
2014.02.08



TRILOBITE TESTING, INC

DRILL STEM TEST REPORT

Dow ning-Nelson Oil Co Inc

4-9s-24w Graham,KS

PO Box 1019
Hays KS 67601

Walt B #1-4

Job Ticket: 56239

DST#: 1

ATTN: Ron Nelson , Marc Do

Test Start: 2014.02.08 @ 04:05:55

GENERAL INFORMATION:

Formation: **LKC C-D**

Deviated: No Whipstock: ft (KB)

Time Tool Opened: 06:13:20

Time Test Ended: 11:12:19

Test Type: Conventional Bottom Hole (Initial)

Tester: Ray Schwager

Unit No: 70

Interval: 3822.00 ft (KB) To 3865.00 ft (KB) (TVD)

Reference Elevations: 2475.00 ft (KB)

Total Depth: 3865.00 ft (KB) (TVD)

2467.00 ft (CF)

Hole Diameter: 7.88 inches Hole Condition: Fair

KB to GR/CF: 8.00 ft

Serial #: 8369

Inside

Press@RunDepth: 208.48 psig @ 3829.00 ft (KB)

Capacity: 8000.00 psig

Start Date: 2014.02.08

End Date:

2014.02.08

Last Calib.:

2014.02.08

Start Time:

04:05:55

End Time:

11:12:19

Time On Btm:

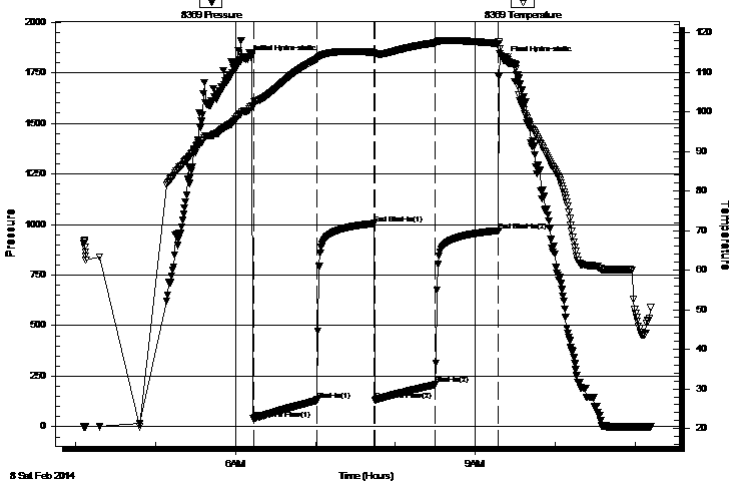
2014.02.08 @ 06:08:50

Time Off Btm:

2014.02.08 @ 09:21:49

TEST COMMENT: 45-IFP-w k to a strg bl in 35 min
45-ISIP-no bl bk
45-FFP-w k to a strg bl in 40 min
45-FSIP-no bl bk

Pressure vs. Time



PRESSURE SUMMARY

| Time (Min.) | Pressure (psig) | Temp (deg F) | Annotation |
|-------------|-----------------|--------------|----------------------|
| 0 | 1814.50 | 100.16 | Initial Hydro-static |
| 5 | 39.40 | 101.44 | Open To Flow (1) |
| 53 | 133.16 | 113.27 | Shut-In(1) |
| 96 | 1004.87 | 115.02 | End Shut-In(1) |
| 96 | 132.66 | 114.72 | Open To Flow (2) |
| 142 | 208.48 | 117.42 | Shut-In(2) |
| 189 | 969.57 | 117.24 | End Shut-In(2) |
| 193 | 1810.37 | 113.46 | Final Hydro-static |

Recovery

| Length (ft) | Description | Volume (bbl) |
|-------------|-------------------|--------------|
| 310.00 | Water | 4.08 |
| 90.00 | SOCMW 1%O39%M60%W | 1.26 |
| 1.00 | CO | 0.01 |
| | | |
| | | |

Gas Rates

| | Choke (inches) | Pressure (psig) | Gas Rate (Mcf/d) |
|--|----------------|-----------------|------------------|
| | | | |



**TRILOBITE
TESTING, INC**

DRILL STEM TEST REPORT

Dow ning-Nelson Oil Co Inc

4-9s-24w Graham,KS

PO Box 1019
Hays KS 67601

Walt B #1-4

Job Ticket: 56239

DST#: 1

ATTN: Ron Nelson , Marc Do

Test Start: 2014.02.08 @ 04:05:55

GENERAL INFORMATION:

Formation: **LKC C-D**

Deviated: No Whipstock: ft (KB)

Time Tool Opened: 06:13:20

Time Test Ended: 11:12:19

Test Type: Conventional Bottom Hole (Initial)

Tester: Ray Schwager

Unit No: 70

Interval: **3822.00 ft (KB) To 3865.00 ft (KB) (TVD)**

Reference Elevations: 2475.00 ft (KB)

Total Depth: 3865.00 ft (KB) (TVD)

2467.00 ft (CF)

Hole Diameter: 7.88 inches Hole Condition: Fair

KB to GR/CF: 8.00 ft

Serial #: 8700 Outside

Press@RunDepth: psig @ 3829.00 ft (KB)

Capacity: 8000.00 psig

Start Date: 2014.02.08

End Date:

2014.02.08

Last Calib.:

2014.02.08

Start Time: 04:05:23

End Time:

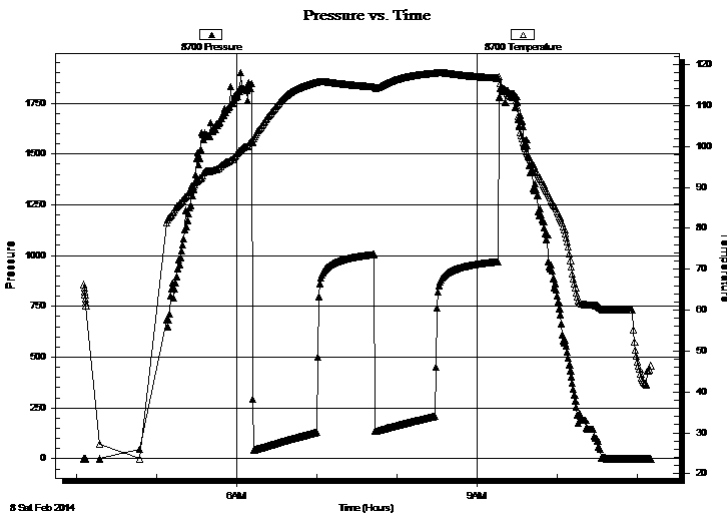
11:10:17

Time On Btm:

Time Off Btm:

TEST COMMENT: 45-IFP-w k to a strg bl in 35 min
45-ISIP-no bl bk
45-FFP-w k to a strg bl in 40 min
45-FSIP-no bl bk

PRESSURE SUMMARY



| Time (Min.) | Pressure (psig) | Temp (deg F) | Annotation |
|-------------|-----------------|--------------|------------|
| | | | |
| | | | |
| | | | |
| | | | |
| | | | |
| | | | |
| | | | |
| | | | |
| | | | |
| | | | |
| | | | |
| | | | |
| | | | |
| | | | |
| | | | |
| | | | |
| | | | |
| | | | |
| | | | |
| | | | |

Recovery

| Length (ft) | Description | Volume (bbl) |
|-------------|-------------------|--------------|
| 310.00 | Water | 4.08 |
| 90.00 | SOCMW 1%O39%M60%W | 1.26 |
| 1.00 | CO | 0.01 |
| | | |
| | | |
| | | |
| | | |

Gas Rates

| | Choke (inches) | Pressure (psig) | Gas Rate (Mcf/d) |
|--|----------------|-----------------|------------------|
| | | | |
| | | | |
| | | | |



**TRILOBITE
TESTING, INC**

DRILL STEM TEST REPORT

TOOL DIAGRAM

Dow ning-Nelson Oil Co Inc

4-9s-24w Graham,KS

PO Box 1019
Hays KS 67601

Walt B #1-4

Job Ticket: 56239

DST#: 1

ATTN: Ron Nelson , Marc Do

Test Start: 2014.02.08 @ 04:05:55

Tool Information

| | | | | |
|----------------------------|--------------------|-----------------------|--------------------------------|------------------------------------|
| Drill Pipe: | Length: 3788.00 ft | Diameter: 3.80 inches | Volume: 53.14 bbl | Tool Weight: 2200.00 lb |
| Heavy Wt. Pipe: | Length: 0.00 ft | Diameter: 0.00 inches | Volume: 0.00 bbl | Weight set on Packer: 25000.00 lb |
| Drill Collar: | Length: 30.00 ft | Diameter: 2.25 inches | Volume: 0.15 bbl | Weight to Pull Loose: 65000.00 lb |
| | | | <u>Total Volume: 53.29 bbl</u> | Tool Chased 6.00 ft |
| Drill Pipe Above KB: | 17.00 ft | | | String Weight: Initial 55000.00 lb |
| Depth to Top Packer: | 3822.00 ft | | | Final 58000.00 lb |
| Depth to Bottom Packer: | ft | | | |
| Interval betw een Packers: | 43.00 ft | | | |
| Tool Length: | 64.00 ft | | | |
| Number of Packers: | 2 | Diameter: 6.75 inches | | |

Tool Comments:

Tool Description

| Tool Description | Length (ft) | Serial No. | Position | Depth (ft) | Accum. Lengths |
|------------------|-------------|------------|----------|------------|-------------------------------|
| Change Over Sub | 1.00 | | | 3802.00 | |
| Shut In Tool | 5.00 | | | 3807.00 | |
| Hydraulic tool | 5.00 | | | 3812.00 | |
| Packer | 5.00 | | | 3817.00 | 21.00 Bottom Of Top Packer |
| Packer | 5.00 | | | 3822.00 | |
| Stubb | 1.00 | | | 3823.00 | |
| Perforations | 6.00 | | | 3829.00 | |
| Recorder | 0.00 | 8369 | Inside | 3829.00 | |
| Recorder | 0.00 | 8700 | Outside | 3829.00 | |
| Blank Spacing | 33.00 | | | 3862.00 | |
| Bullnose | 3.00 | | | 3865.00 | 43.00 Bottom Packers & Anchor |

Total Tool Length: 64.00



**TRILOBITE
TESTING, INC**

DRILL STEM TEST REPORT

FLUID SUMMARY

Dow ning-Nelson Oil Co Inc

4-9s-24w Graham,KS

PO Box 1019
Hays KS 67601

Walt B #1-4

Job Ticket: 56239

DST#: 1

ATTN: Ron Nelson , Marc Do

Test Start: 2014.02.08 @ 04:05:55

Mud and Cushion Information

Mud Type: Gel Chem

Cushion Type:

Oil API:

deg API

Mud Weight: 9.00 lb/gal

Cushion Length:

ft

Water Salinity:

75000 ppm

Viscosity: 58.00 sec/qt

Cushion Volume:

bbbl

Water Loss: 7.94 in³

Gas Cushion Type:

Resistivity: ohm.m

Gas Cushion Pressure:

psig

Salinity: 1000.00 ppm

Filter Cake: 1.00 inches

Recovery Information

Recovery Table

| Length ft | Description | Volume bbbl |
|--------------|-------------------|----------------|
| 310.00 | Water | 4.075 |
| 90.00 | SOCMW 1%O39%M60%W | 1.262 |
| 1.00 | CO | 0.014 |

Total Length: 401.00 ft Total Volume: 5.351 bbl

Num Fluid Samples: 0

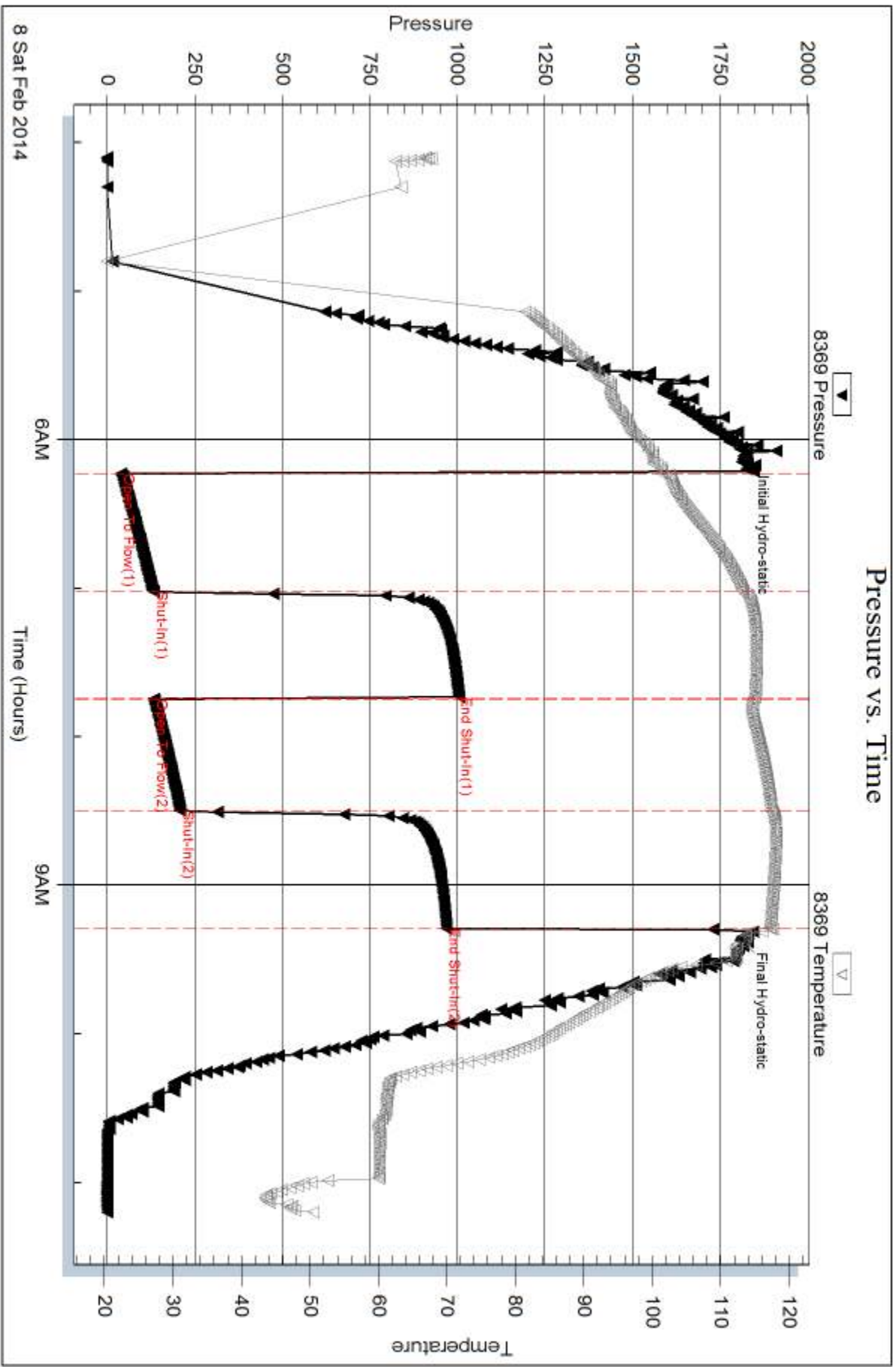
Num Gas Bombs: 0

Serial #:

Laboratory Name:

Laboratory Location:

Recovery Comments: slid tool approx 6'to bottom
RW .14@50F

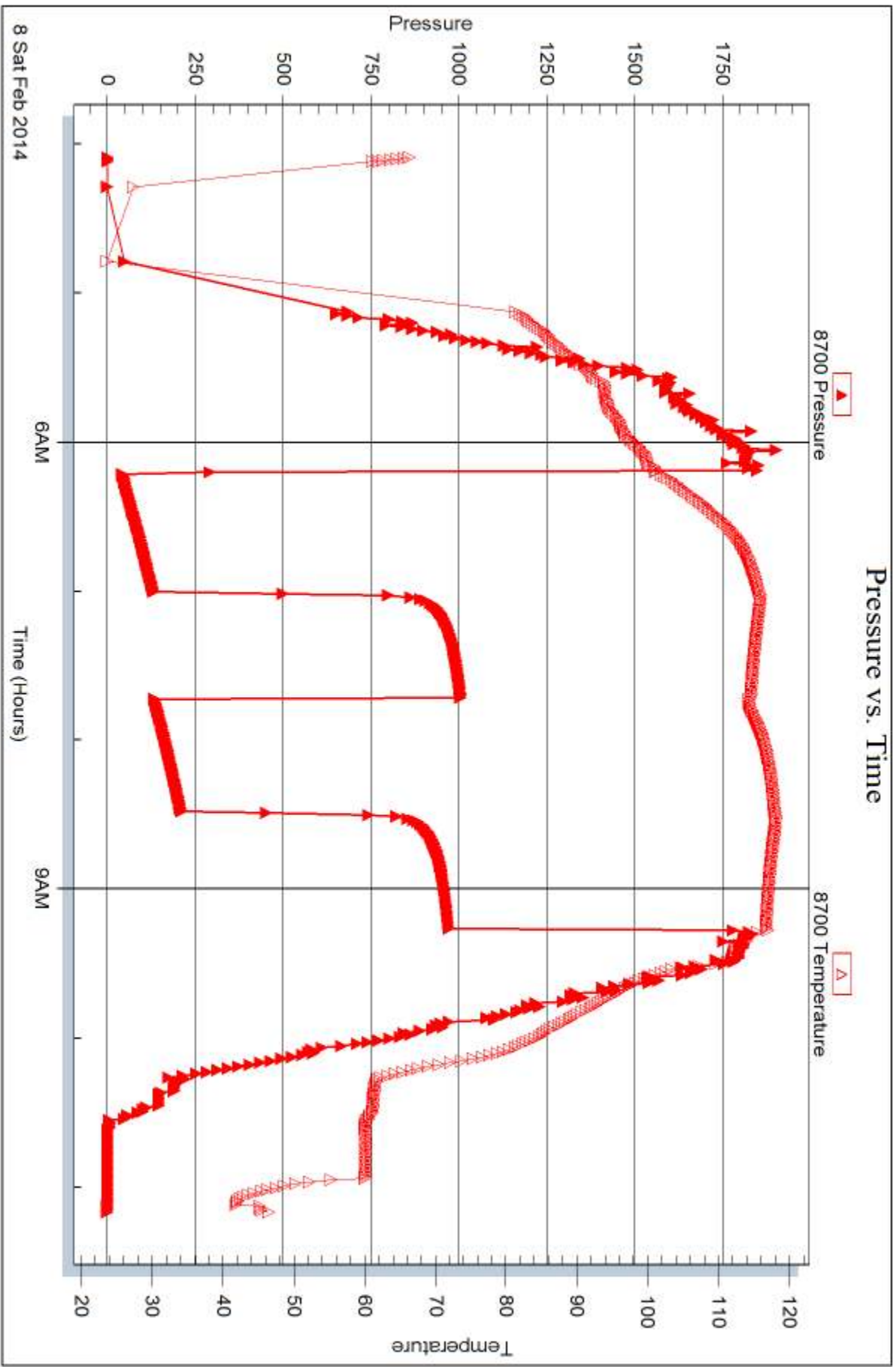


Serial #: 8700

Outside Dow nng-Nelson Oil Co Inc

Well B#1-4

DST Test Number: 1



Tribble Testing, Inc

Ref. No: 56239

Printed: 2014.02.11 @ 09:15:21



DRILL STEM TEST REPORT

Prepared For: **Downing-Nelson Oil Co Inc**

PO Box 1019
Hays KS 67601

ATTN: Ron Nelson , Marc Do

Walt B #1-4

4-9s-24w Graham,KS

Start Date: 2014.02.09 @ 00:30:41

End Date: 2014.02.09 @ 06:26:20

Job Ticket #: 56240 DST #: 2

Trilobite Testing, Inc

PO Box 362 Hays, KS 67601

ph: 785-625-4778 fax: 785-625-5620

Printed: 2014.02.11 @ 09:14:41



TRILOBITE TESTING, INC

DRILL STEM TEST REPORT

Dow ning-Nelson Oil Co Inc

4-9s-24w Graham,KS

PO Box 1019
Hays KS 67601

Walt B #1-4

Job Ticket: 56240

DST#: 2

ATTN: Ron Nelson , Marc Do

Test Start: 2014.02.09 @ 00:30:41

GENERAL INFORMATION:

Formation: **LKC H-J**

Deviated: No Whipstock: ft (KB)

Time Tool Opened: 02:29:51

Time Test Ended: 06:26:20

Test Type: Conventional Bottom Hole (Reset)

Tester: Ray Schwager

Unit No: 70

Interval: 3921.00 ft (KB) To 3995.00 ft (KB) (TVD)

Reference Elevations: 2475.00 ft (KB)

Total Depth: 3995.00 ft (KB) (TVD)

2467.00 ft (CF)

Hole Diameter: 7.88 inches Hole Condition: Fair

KB to GR/CF: 8.00 ft

Serial #: 8369 Inside

Press@RunDepth: 35.89 psig @ 3928.00 ft (KB)

Capacity: 8000.00 psig

Start Date: 2014.02.09

End Date:

2014.02.09

Last Calib.:

2014.02.09

Start Time: 00:30:41

End Time:

06:26:20

Time On Btm:

2014.02.09 @ 02:25:06

Time Off Btm:

2014.02.09 @ 04:36:51

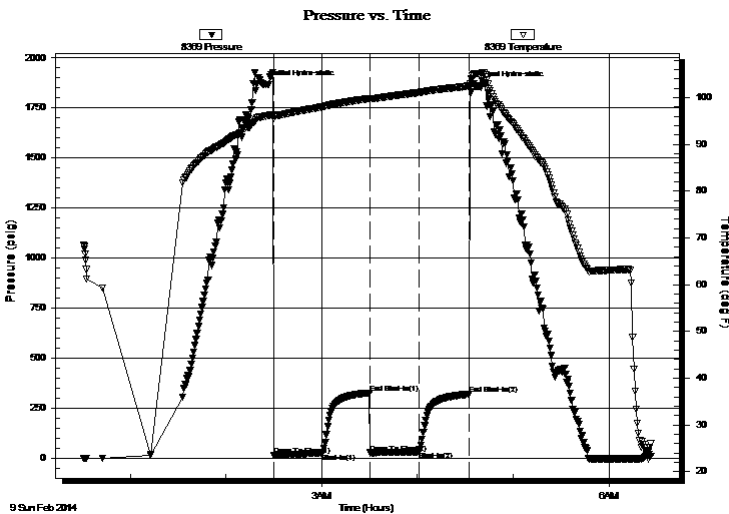
TEST COMMENT: 30-IFP-w k bl thru-out 1/4" to 1" bl

30-ISIP-no bl

30-FFP-no bl

30-FSIP-no bl

PRESSURE SUMMARY



| Time (Min.) | Pressure (psig) | Temp (deg F) | Annotation |
|-------------|-----------------|--------------|----------------------|
| 0 | 1867.45 | 96.07 | Initial Hydro-static |
| 5 | 16.90 | 95.53 | Open To Flow (1) |
| 35 | 27.55 | 98.00 | Shut-In(1) |
| 65 | 328.56 | 99.84 | End Shut-In(1) |
| 66 | 28.98 | 99.72 | Open To Flow (2) |
| 96 | 35.89 | 101.08 | Shut-In(2) |
| 128 | 321.50 | 102.47 | End Shut-In(2) |
| 132 | 1860.24 | 105.11 | Final Hydro-static |

Recovery

| Length (ft) | Description | Volume (bbl) |
|-------------|--------------|--------------|
| 35.00 | SOCM 1%O99%M | 0.22 |
| | | |
| | | |
| | | |
| | | |

* Recovery from multiple tests

Gas Rates

| Choke (inches) | Pressure (psig) | Gas Rate (Mcf/d) |
|----------------|-----------------|------------------|
| | | |



TRILOBITE TESTING, INC

DRILL STEM TEST REPORT

Dow ning-Nelson Oil Co Inc

4-9s-24w Graham,KS

PO Box 1019
Hays KS 67601

Walt B #1-4

Job Ticket: 56240

DST#: 2

ATTN: Ron Nelson , Marc Do

Test Start: 2014.02.09 @ 00:30:41

GENERAL INFORMATION:

Formation: **LKC H-J**

Deviated: No Whipstock: ft (KB)

Time Tool Opened: 02:29:51

Time Test Ended: 06:26:20

Interval: 3921.00 ft (KB) To 3995.00 ft (KB) (TVD)

Total Depth: 3995.00 ft (KB) (TVD)

Hole Diameter: 7.88 inches Hole Condition: Fair

Test Type: Conventional Bottom Hole (Reset)

Tester: Ray Schw ager

Unit No: 70

Reference Elevations: 2475.00 ft (KB)

2467.00 ft (CF)

KB to GR/CF: 8.00 ft

Serial #: 8700 Outside

Press@RunDepth: psig @ 3928.00 ft (KB)

Start Date: 2014.02.09

End Date:

2014.02.09

Start Time: 00:30:28

End Time:

06:24:52

Capacity: 8000.00 psig

Last Calib.:

2014.02.09

Time On Btm:

Time Off Btm:

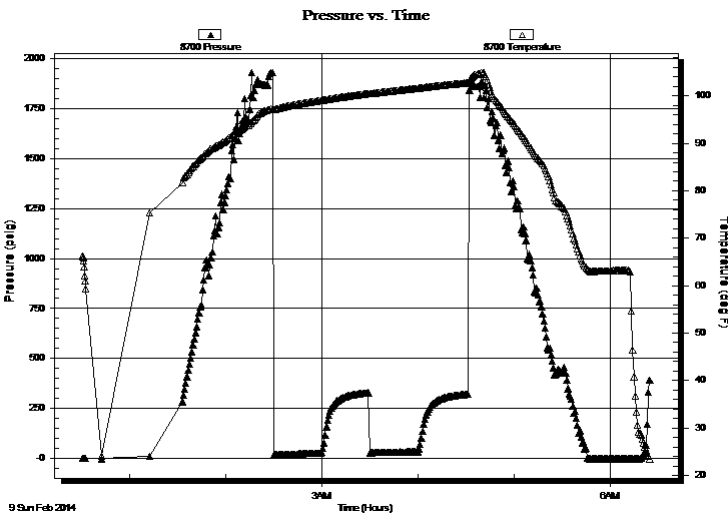
TEST COMMENT: 30-IFP-w k bl thru-out 1/4" to 1" bl

30-ISIP-no bl

30-FFP-no bl

30-FSIP-no bl

PRESSURE SUMMARY



| Time (Min.) | Pressure (psig) | Temp (deg F) | Annotation |
|-------------|-----------------|--------------|------------|
| | | | |
| | | | |
| | | | |
| | | | |
| | | | |
| | | | |
| | | | |
| | | | |
| | | | |
| | | | |
| | | | |
| | | | |
| | | | |
| | | | |
| | | | |
| | | | |
| | | | |
| | | | |
| | | | |
| | | | |
| | | | |
| | | | |

Recovery

| Length (ft) | Description | Volume (bbl) |
|-------------|--------------|--------------|
| 35.00 | SOCM 1%O99%M | 0.22 |
| | | |
| | | |
| | | |
| | | |
| | | |
| | | |
| | | |

* Recovery from multiple tests

Gas Rates

| Choke (inches) | Pressure (psig) | Gas Rate (Mcf/d) |
|----------------|-----------------|------------------|
| | | |
| | | |
| | | |
| | | |
| | | |



**TRILOBITE
TESTING, INC**

DRILL STEM TEST REPORT

TOOL DIAGRAM

Dow ning-Nelson Oil Co Inc

4-9s-24w Graham,KS

PO Box 1019
Hays KS 67601

Walt B #1-4

Job Ticket: 56240

DST#: 2

ATTN: Ron Nelson , Marc Do

Test Start: 2014.02.09 @ 00:30:41

Tool Information

| | | | | | |
|----------------------------|--------------------|-----------------------|--------------------------------|------------------------|-------------|
| Drill Pipe: | Length: 3890.00 ft | Diameter: 3.80 inches | Volume: 54.57 bbl | Tool Weight: | 2200.00 lb |
| Heavy Wt. Pipe: | Length: 0.00 ft | Diameter: 0.00 inches | Volume: 0.00 bbl | Weight set on Packer: | 25000.00 lb |
| Drill Collar: | Length: 30.00 ft | Diameter: 2.25 inches | Volume: 0.15 bbl | Weight to Pull Loose: | 65000.00 lb |
| | | | <u>Total Volume: 54.72 bbl</u> | Tool Chased | 0.00 ft |
| Drill Pipe Above KB: | 20.00 ft | | | String Weight: Initial | 55000.00 lb |
| Depth to Top Packer: | 3921.00 ft | | | Final | 55000.00 lb |
| Depth to Bottom Packer: | ft | | | | |
| Interval betw een Packers: | 74.00 ft | | | | |
| Tool Length: | 95.00 ft | | | | |
| Number of Packers: | 2 | Diameter: 6.75 inches | | | |
| Tool Comments: | | | | | |

Tool Description

| Tool Description | Length (ft) | Serial No. | Position | Depth (ft) | Accum. Lengths |
|------------------|-------------|------------|----------|------------|-------------------------------|
| Change Over Sub | 1.00 | | | 3901.00 | |
| Shut In Tool | 5.00 | | | 3906.00 | |
| Hydraulic tool | 5.00 | | | 3911.00 | |
| Packer | 5.00 | | | 3916.00 | 21.00 Bottom Of Top Packer |
| Packer | 5.00 | | | 3921.00 | |
| Stubb | 1.00 | | | 3922.00 | |
| Perforations | 6.00 | | | 3928.00 | |
| Recorder | 0.00 | 8369 | Inside | 3928.00 | |
| Recorder | 0.00 | 8700 | Outside | 3928.00 | |
| Blank Spacing | 64.00 | | | 3992.00 | |
| Bullnose | 3.00 | | | 3995.00 | 74.00 Bottom Packers & Anchor |

Total Tool Length: 95.00



**TRILOBITE
TESTING, INC**

DRILL STEM TEST REPORT

FLUID SUMMARY

Dow ning-Nelson Oil Co Inc

4-9s-24w Graham,KS

PO Box 1019
Hays KS 67601

Walt B #1-4

Job Ticket: 56240

DST#: 2

ATTN: Ron Nelson , Marc Do

Test Start: 2014.02.09 @ 00:30:41

Mud and Cushion Information

Mud Type: Gel Chem

Cushion Type:

Oil API:

deg API

Mud Weight: 9.00 lb/gal

Cushion Length:

ft

Water Salinity:

ppm

Viscosity: 60.00 sec/qt

Cushion Volume:

bbbl

Water Loss: 6.39 in³

Gas Cushion Type:

Resistivity: ohm.m

Gas Cushion Pressure:

psig

Salinity: 500.00 ppm

Filter Cake: 1.00 inches

Recovery Information

Recovery Table

| Length ft | Description | Volume bbbl |
|--------------|--------------|----------------|
| 35.00 | SOCM 1%O99%M | 0.218 |

Total Length: 35.00 ft Total Volume: 0.218 bbl

Num Fluid Samples: 0

Num Gas Bombs: 0

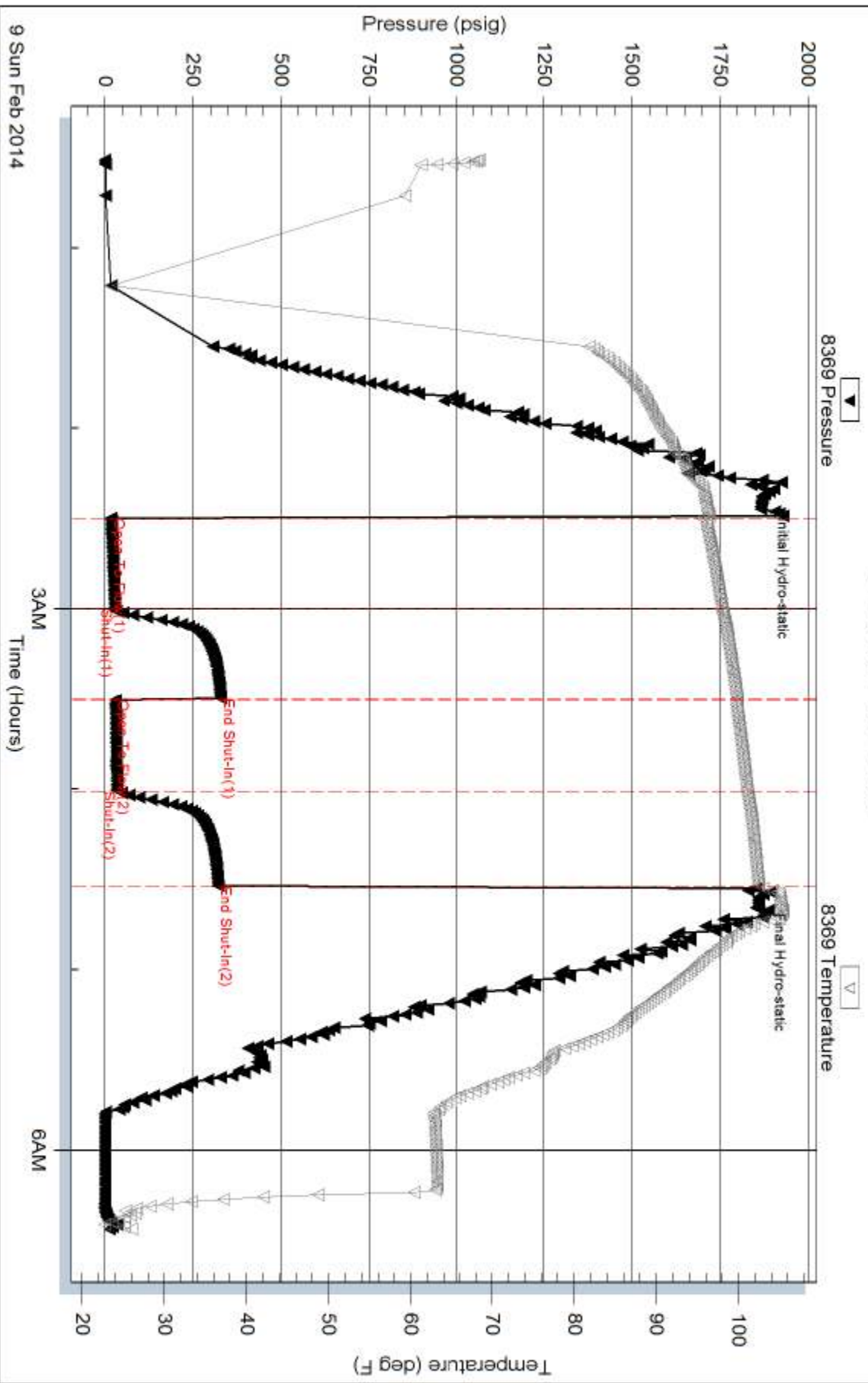
Serial #:

Laboratory Name:

Laboratory Location:

Recovery Comments:

Pressure vs. Time

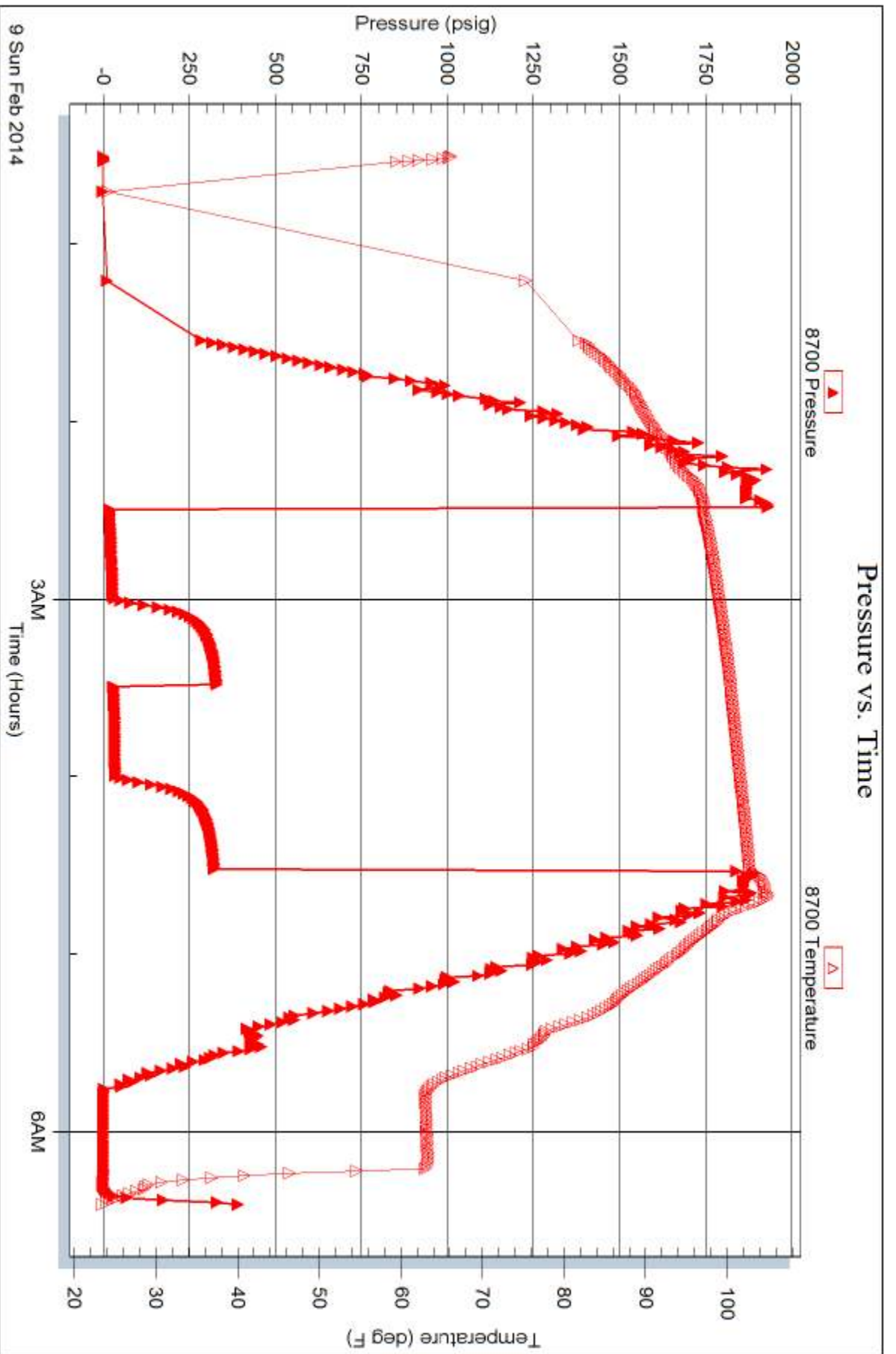


Serial #: 8700

Outside Dow nrg-Nelson Oil Co Inc

Well B#1-4

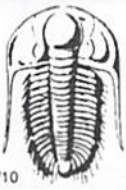
DST Test Number: 2



Trilobite Testing, Inc

Ref. No: 56240

Printed: 2014.02.11 @ 09:14:43



TRILOBITE TESTING INC.

1515 Commerce Parkway • Hays, Kansas 67601

Test Ticket

NO. 56239

4/10

Well Name & No. WALT "B" #1-4 Test No. 1 Date 2-8-14
 Company Downing-Nelson Oil Co Inc Elevation 2475 KB 2467 GL
 Address PO Box 1019 Hays, Ks 67601
 Co. Rep / Geo. MARC Downing Rig Discovery rig 1
 Location: Sec. 4 Twp. 9^s Rge. 24^w Co. GRAHAM State Ks

Interval Tested 3822-3865 Zone Tested LKC C-0
 Anchor Length 43 Drill Pipe Run 3788 Mud Wt. 8.8
 Top Packer Depth 3817 Drill Collars Run 30 Vis 58
 Bottom Packer Depth 3822 Wt. Pipe Run - WL 8
 Total Depth 3865 Chlorides 1000 ppm System LCM 2 1/2 #

Blow Description TFP - WEAK TO A STRONG BLOW IN 30 MIN
ISIP - NO BLOW
FFP - WEAK TO A STRONG BLOW IN 40 MIN
FSTIP - NO BLOW

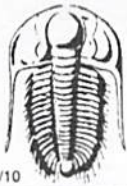
| Rec | Feet of | %gas | %oil | %water | %mud |
|------------|---------------|------|----------|-----------|-----------|
| <u>1</u> | <u>CO</u> | | | | |
| <u>90</u> | <u>50 CMW</u> | | <u>1</u> | <u>60</u> | <u>39</u> |
| <u>310</u> | <u>WATER</u> | | | | |
| | | | | | |
| | | | | | |

Rec Total 401 BHT 117 Gravity - API RW .14 @ 50 ° F Chlorides 75000 ppm
 Test 1150 T-On Location 0100
 Jars _____ T-Started 0405
 Safety Joint _____ T-Open 0610
 Circ Sub _____ T-Pulled 0910
 Hourly Standby _____ T-Out 1112
 Mileage 13 DRT 201.50 Comments _____
 Sampler _____
 Straddle _____
 Shale Packer _____
 Extra Packer _____
 Extra Recorder _____
 Day Standby _____
 Accessibility _____

Initial Open 45
 Initial Shut-In 45
 Final Flow 45
 Final Shut-In 45
 Sub Total 0
 Total 1351.50
 MP/DST Disc't _____
 Sub Total 1351.50

Approved By _____ Our Representative Ray Schwager Thank you

Trilobite Testing Inc. shall not be liable for damaged of any kind of the property or personnel of the one for whom a test is made, or for any loss suffered or sustained, directly or indirectly, through the use of its equipment, or its statements or opinion concerning the results of any test, tools lost or damaged in the hole shall be paid for at cost by the party for whom the test is made.



TRILOBITE TESTING INC.

1515 Commerce Parkway • Hays, Kansas 67601

Test Ticket

NO. 56240

4/10

Well Name & No. WALT "B" #1-4 Test No. 2 Date 2-8-14
 Company Downing-Nelson Oil Co Inc Elevation 2475 KB 2467 GL
 Address PO Box 1019 Hays, KS 67601
 Co. Rep / Geo. MARC Downing Rig Discovery rig 1
 Location: Sec. 4 Twp. 9^s Rge. 24^w Co. GRAHAM State K

Interval Tested 3921-3995 Zone Tested LKC H-J
 Anchor Length 74 Drill Pipe Run 3890 Mud Wt. 9.1
 Top Packer Depth 3916 Drill Collars Run 30 Vis 60
 Bottom Packer Depth 3921 Wt. Pipe Run - WL 6.4
 Total Depth 3995 Chlorides 500 ppm System LCM 1 1/2 #

Blow Description IFP - WEAK Blow thru-out 1/4" To 1" Blow
ISIP - NO Blow
FFP - NO Blow
FSIP - NO Blow

| Rec | Feet of | %gas | %oil | %water | %mud |
|-----------|-------------|------|----------|--------|-----------|
| <u>35</u> | <u>50CM</u> | | <u>1</u> | | <u>99</u> |
| Rec | Feet of | %gas | %oil | %water | %mud |
| Rec | Feet of | %gas | %oil | %water | %mud |
| Rec | Feet of | %gas | %oil | %water | %mud |
| Rec | Feet of | %gas | %oil | %water | %mud |

Rec Total 35 BHT 102 Gravity - API RW - @ - °F Chlorides - ppm

(A) Initial Hydrostatic 1867 Test 1150 T-On Location 2350
 (B) First Initial Flow 16 Jars _____ T-Started 0030
 (C) First Final Flow 27 Safety Joint _____ T-Open 0225
 (D) Initial Shut-In 328 Circ Sub _____ T-Pulled 0425
 (E) Second Initial Flow 28 Hourly Standby _____ T-Out 0626
 (F) Second Final Flow 35 Mileage 403 Comments _____
 (G) Final Shut-In 321 Sampler _____ Loaded Tool 2-9-14
 (H) Final Hydrostatic 1860 Straddle _____ 2000
 Ruined Shale Packer _____
 Ruined Packer _____

Initial Open 30 Shale Packer _____
 Initial Shut-In 30 Extra Packer _____
 Final Flow 30 Extra Recorder _____
 Final Shut-In 30 Day Standby _____
 Accessibility _____
 Sub Total 1553

Approved By _____ Our Representative RAY SCHWAGER Thank you

Trilobite Testing Inc. shall not be liable for damaged of any kind of the property or personnel of the one for whom a test is made, or for any loss suffered or sustained, directly or indirectly, through the use of its equipment, or its statements or opinion concerning the results of any test, tools lost or damaged in the hole shall be paid for at cost by the party for whom the test is made.