



GEOLOGICAL REPORT
DRILLING TIME & SAMPLE LOG

REPORT PREPARED BY FRANK S. MIZER/GEOLOGIST
 AP# 15-015-241009



COMPANY: **TriPower Resources, LLC**
 LEASE: **Bluestem #12B**
 FIELD: **Joseph Southeast**
 LOCATION: **1650' FSL & 3430' FEL**
 SEC. **20** TWP. **24S** RGE. **5E**
 COUNTY: **Butler** STATE: **Kansas**

ELEVATION
 K.B. **1427**
 D.F. _____
 G.L. **1420**

DEPTH MEASURED FROM KB
 Log _____
 Drilling

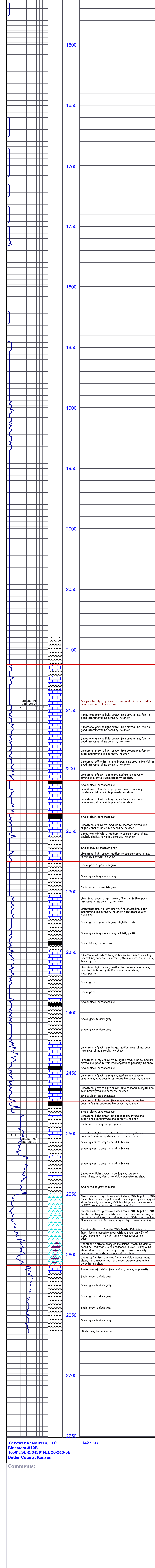
CONTRACTOR: **C&G Drilling, Inc./Rig #1**
 SPUD: **12-18-13** COMP: **12-21-13**
 SAMPLES SAVED FROM _____ TO _____

Surface: **8.58% (200' W/1255'**
 Production: **5.12% (200' W/1255'**
 Electric Logs _____
 CNL/CNL/PUL/MICRO _____

FORMATION	SAMPLE	ELOG	DATUM	A. ELOG	B. ELOG	C. ELOG
Oreard		1510	-83	-79		-82
Heebner		1544	-117	-115		-116
Brown		1728	-301	-300		-301
Lansing		1820	-393	-392		-390
Base Lansing		1820	-393	-392		-390
Base Lansing	2112	1914	-517	-517		-516
Stark	2208	1885	-529	-529		-528
Hushpuckney	2235	2235	-588	-589		-584
BKC	2275	2277	-580	-580		-585
Marmaton	2348	2348	-921	-923		-921
Cherokee	2473	2474	-1047	-1055		-1051
Mississippi	2549	2549	-1122	-1123		-1118
Miss Lim	2609	2609	-1182	-1176		-1175
Kinderhook	2615	2612	-1190	-1194		-1192
KTD	2683	2683	-1241	-1241		-1239

A. C NE SW 20-24S-5E, Reich Petroleum, Bluestem #B-1
 B. C SW NE SW 20-24S-5E, Reich Petroleum, Bluestem #B-1
 C. C 2910' FSL & 3070' FEL, 20-24S-5E, TriPower, Bluestem #9

- SHALE
- SANDSTONE
- LIMESTONE
- DOLOMITE
- HALITE
- ANHYDRITE/GYPSUM



Lansing 1820-373

Kansas City 2112-685

Stark 2208-781

Hushpuckney 2235-808

BKC 2275-848

Marmaton 2348-921

Cherokee 2473-1046

Mississippi 2549-1122

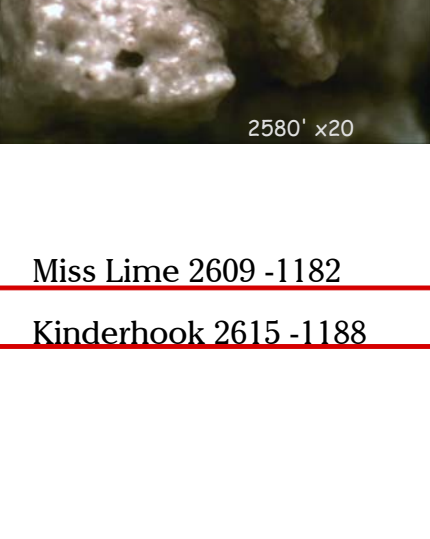
Miss Lime 2609-1182

Kinderhook 2615-1188

1427 KB

TriPower Resources, LLC
 Bluestem #12B
 1650' FSL & 3430' FEL 20-24S-5E
 Butler County, Kansas

Comments:



TFB @ 2483'