

# Tim J. Lauer

## Petroleum Geologist

Office 316.832.0530  
Cell 316.253.1275

### GEOLOGIST'S REPORT

#### DRILLING TIME AND SAMPLE LOG

COMPANY	Coral Production Corporation		
LEASE	#16-1 Keiswetter Trust		
FIELD			
LOCATION	2047' FNL, 1633' FWL of Section		
SEC	16	TWSP	7s RGE 18w
COUNTY	Rooks	STATE	Kansas
CONTRACTOR	Maverick Drilling Rig #102		
SPUD	1-20-2014	COMP	1-30-2014
RTD	3373'	LTD	3376'
MUD UP	2600'	TYPE MUD	Chemical
SAMPLES SAVED FROM	2750' TO RTD		
DRILLING TIME KEPT FROM	2750' TO RTD		
SAMPLES EXAMINED FROM	2750' TO RTD		
GEOLOGICAL SUPERVISION FROM	2880' TO RTD		
GEOLOGIST ON WELL	Tim J. Lauer		

### ELEVATIONS

KB 1863'

DF \_\_\_\_\_

GL 1856'

Measurements Are All From Kelly Bushing

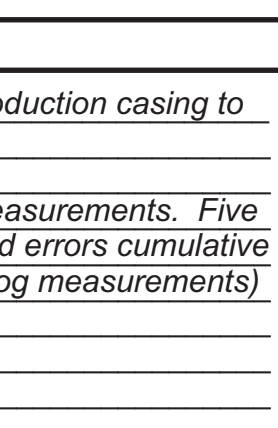
### CASING

CONDUCTOR 13-3/8" @ 95'  
SURFACE 8-5/8" @ 1359'  
PRODUCTION 5-1/2" @ 3353'

### ELECTRICAL SURVEYS

Nabors: DIL, DPL, ML  
(Engr: Mitch Rupp)

FORMATION TOPS	ELECTRIC LOG	SAMPLE LOG
Anhydrite	1354 (+509)	1349 (+514)
Topeka	2811 (-948)	2810 (-947)
Heebner	3016 (-1153)	3016 (-1153)
Toronto	3038 (-1175)	3037 (-1174)
Lansing	3054 (-1191)	3053 (-1190)
Base Ks. City	3283 (-1420)	3281 (-1418)
Arbuckle	3365 (-1502)	3362 (-1499)
Total Depth	3376 (-1513)	3373 (-1510)



REMARKS Due to DST results and log calculations, operator elected to run production casing to further test the location.

(Note: Log measurements below 3125 appear 3' deep to Rotary measurements. Five joints laid down due to washing at multiple connections. Total Board errors cumulative effect added 3 feet to Rotary measurements below this point. Use log measurements)

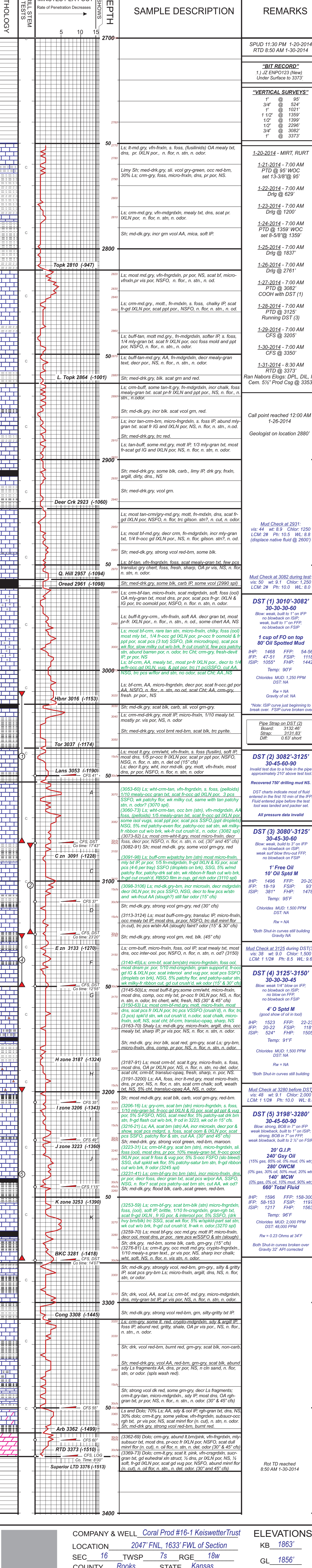
Respectfully submitted,

*Tim J. Lauer*

Tim J. Lauer  
1-31-2014

### LEGEND

--	--	--	--	--	--	--	--



COMPANY & WELL Coral Prod #16-1 Keiswetter Trust

ELEVATIONS

LOCATION 2047' FNL, 1633' FWL of Section

KB 1863'

SEC 16 TWSP 7s RGE 18w

GL 1856'

COUNTY Rooks STATE Kansas

