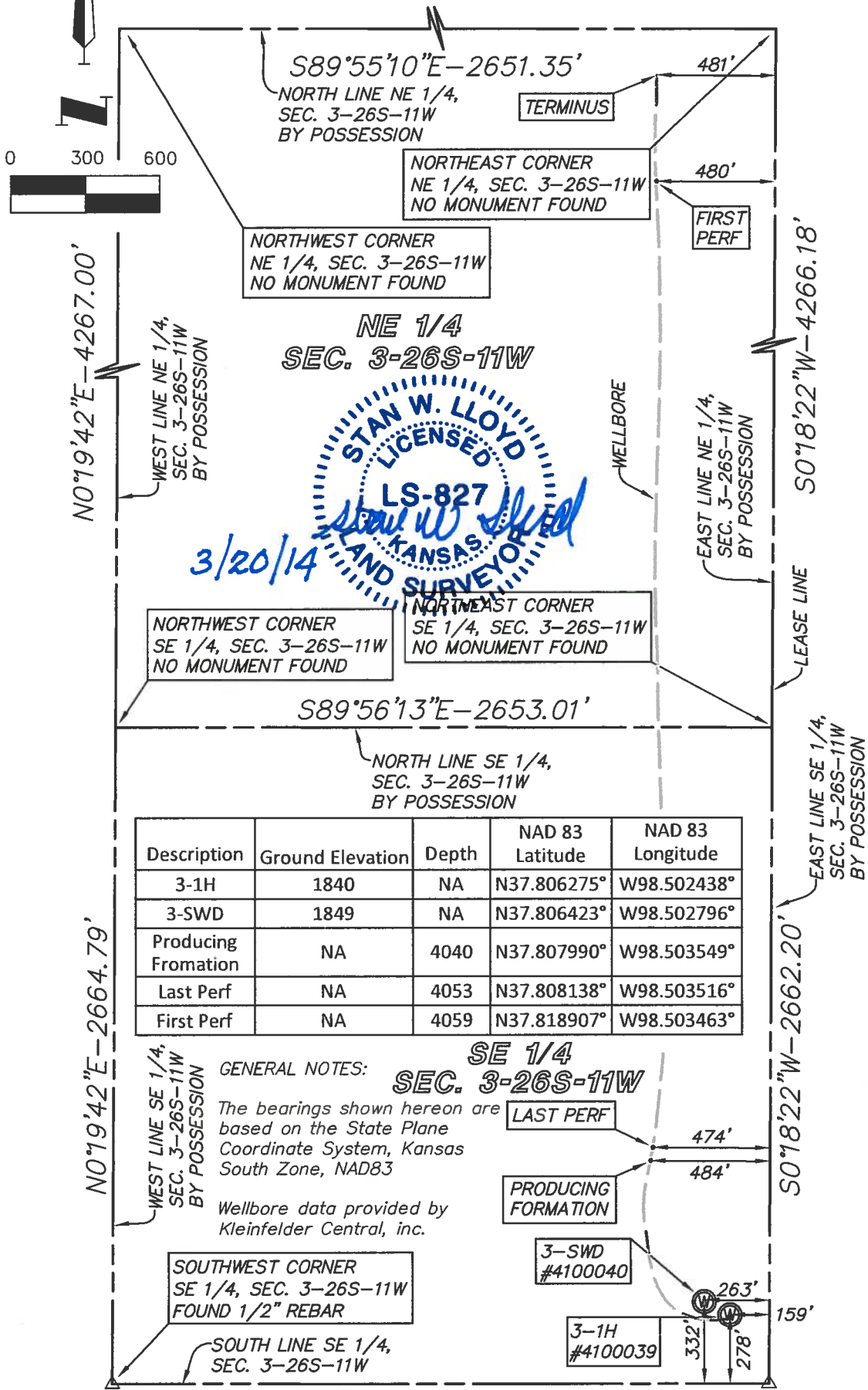


**WELL COMPLETION EXHIBIT
BOCK
SEC 3, T 26 S, R 11 W
PRATT COUNTY, KANSAS**



Description	Ground Elevation	Depth	NAD 83 Latitude	NAD 83 Longitude
3-1H	1840	NA	N37.806275°	W98.502438°
3-SWD	1849	NA	N37.806423°	W98.502796°
Producing Fromation	NA	4040	N37.807990°	W98.503549°
Last Perf	NA	4053	N37.808138°	W98.503516°
First Perf	NA	4059	N37.818907°	W98.503463°

PREPARED FOR:
KLEINFELDER CENTRAL, INC.

SHAFER, KLINE & WARREN, INC.
11250 CORPORATE AVENUE, LENEXA, KANSAS 66219
PHONE: 913-888-7800 FAX: 913-888-7868
<http://www.skw-inc.com>

PROJECT NO. 130384-010	DATE 3-20-14	BY SAC
------------------------	--------------	--------

SOUTHEAST CORNER
SE 1/4, SEC. 3-26S-11W
FOUND 7/8" REBAR

