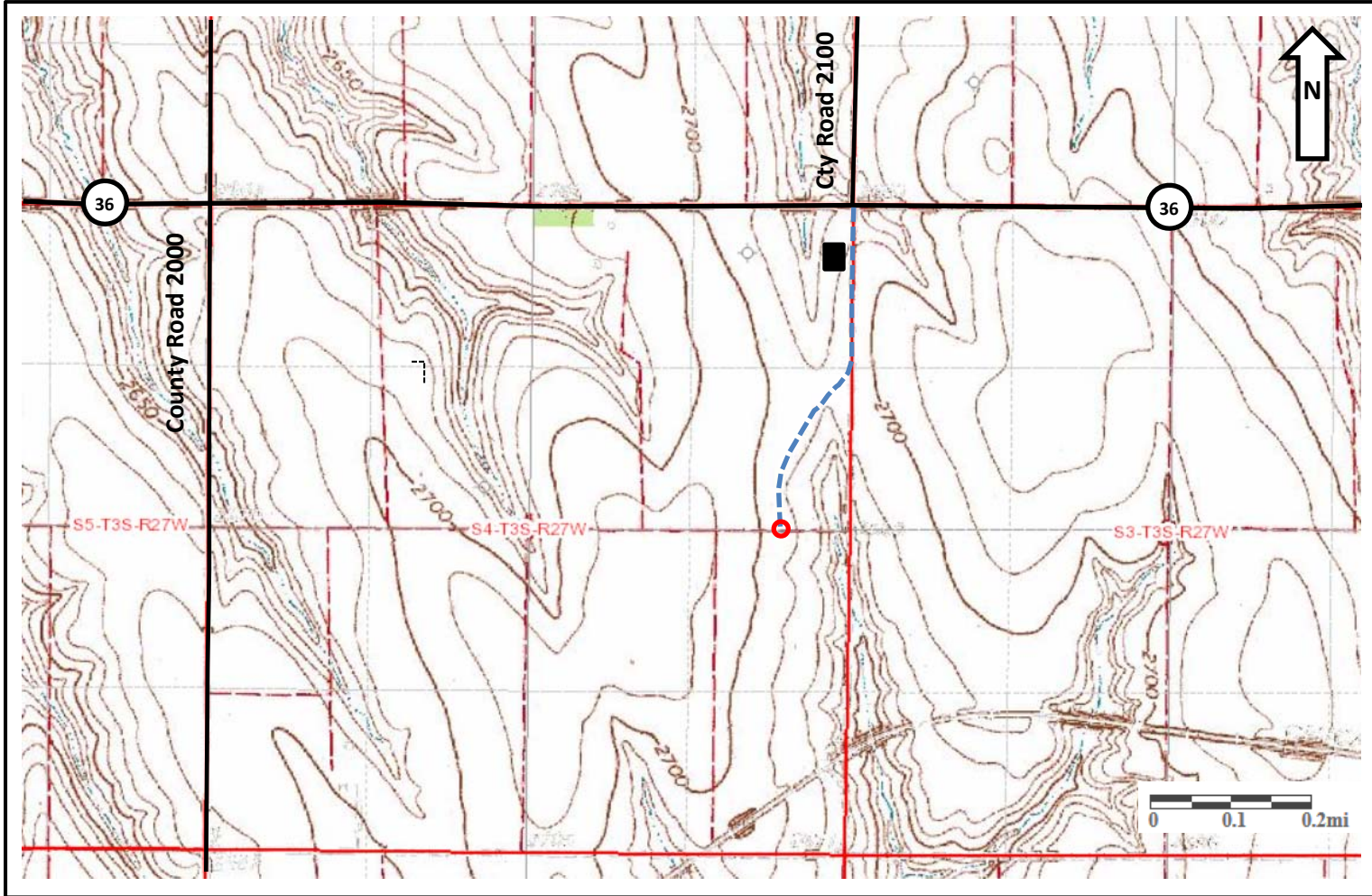





Flying S 1-4 Location (Decatur County, KS)

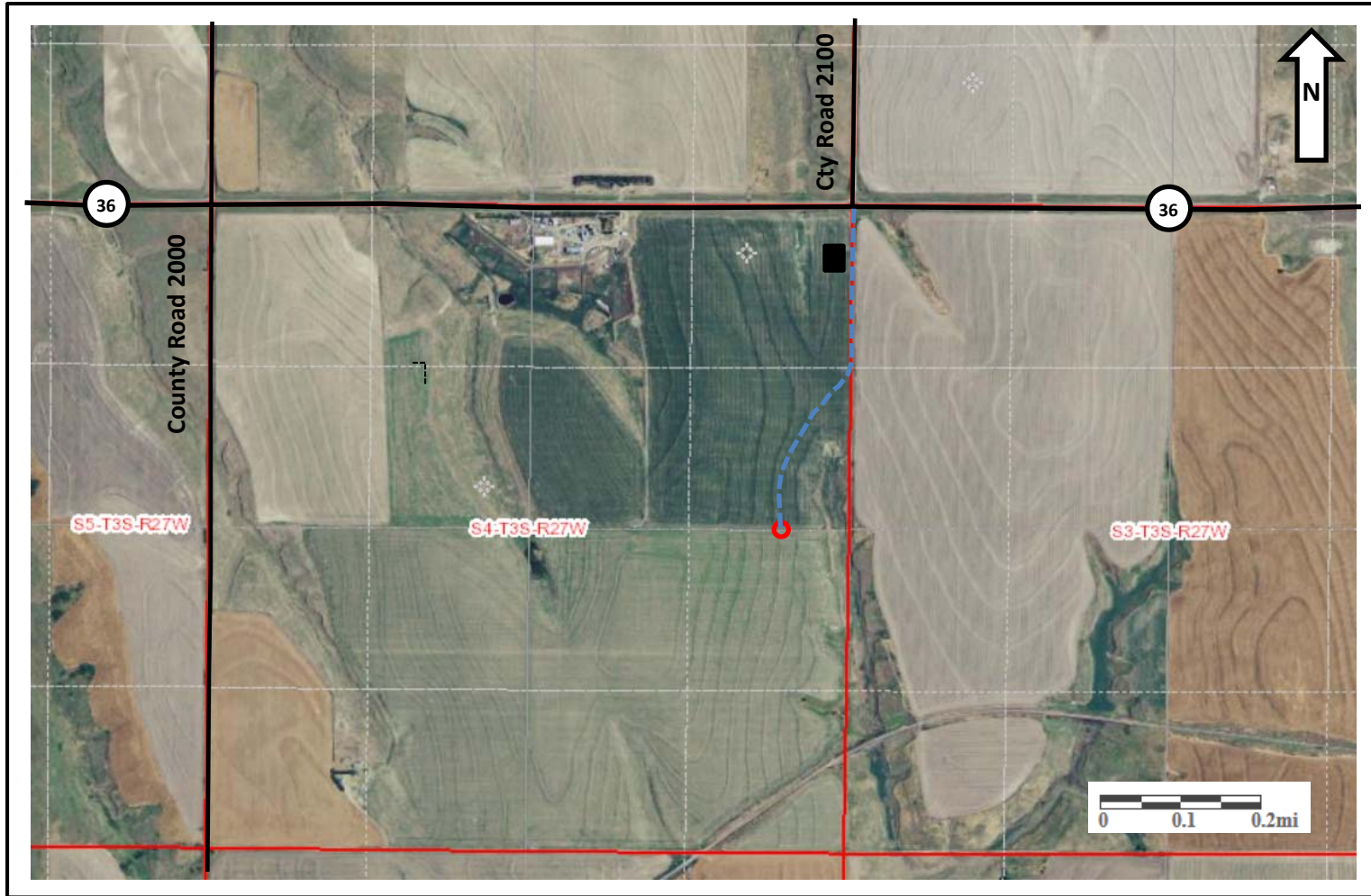


Estimated GL: 2694 ft.

Flying S 1-4
60' E of C E/2 E/2
2640' FSL & 600' FEL
S4 T3S R27W




-  Flying S 1-4 Location
-  Proposed Road
-  Proposed Tank Battery

Flying S 1-4 Location (Decatur County, KS)



Estimated GL: 2694 ft.

Flying S 1-4
60' E of C E/2 E/2
2640' FSL & 600' FEL
S4 T3S R27W

-  Flying S 1-4 Location
-  Proposed Road
-  Proposed Tank Battery

Flying S 1-4 Well Pad:

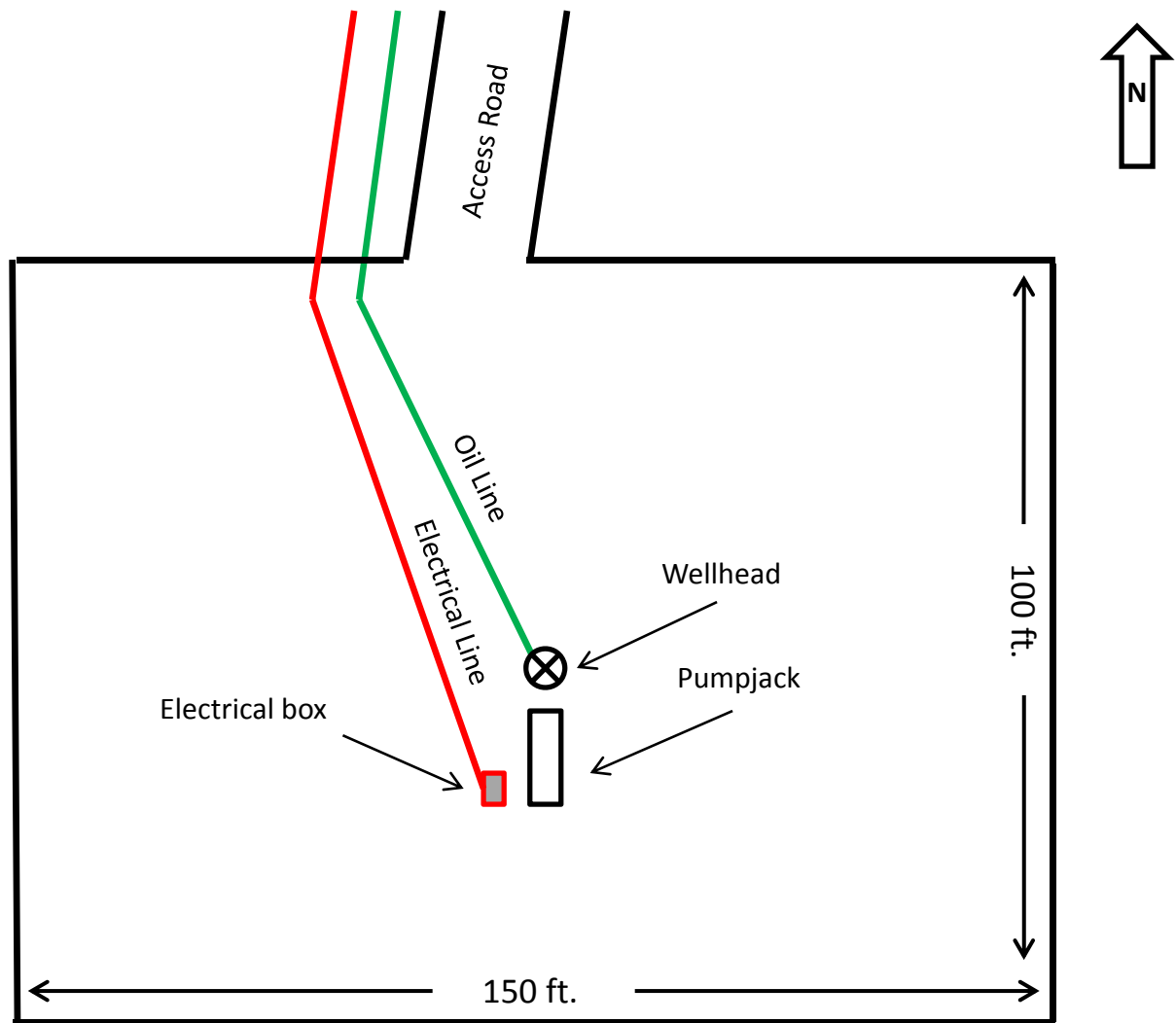
60' E of C E/2 E/2
2640' FSL & 600' FEL
S4 T3S R27W

Well Pad Dimensions:

100 ft. x 150 ft.
(Estimated)

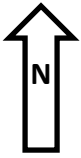
Road Width:

~16 ft.



* Possible gross disturbed area 125 ft. x 175 ft.

* Not Drawn to Scale; all measurements are estimates



Flying S 1-4 Tank Battery:

Located:

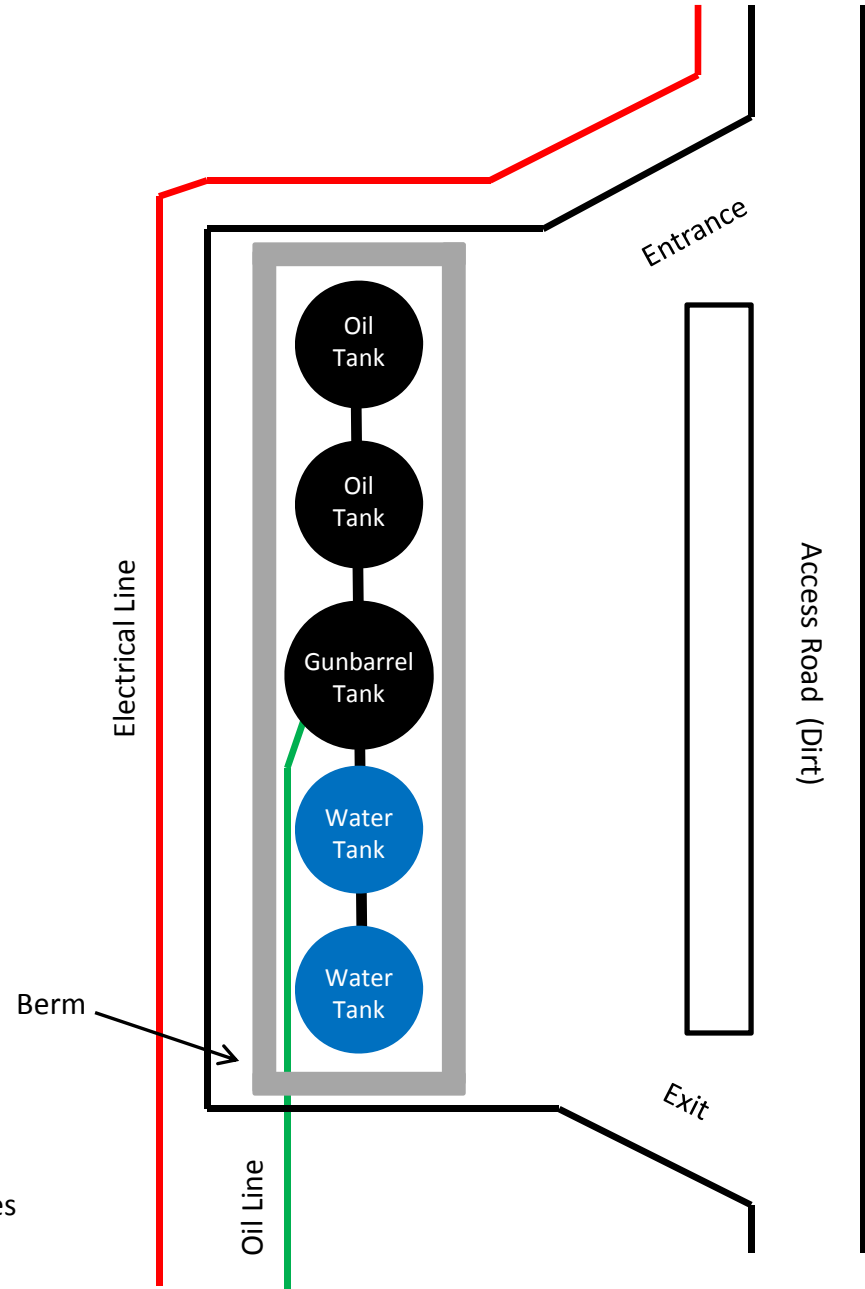
NE NE NE NE
S4 T3S R27W

Well Pad Dimensions:

75 ft. x 100 ft.
(Estimated)

Road Width:

~16 ft.



* Not Drawn to Scale; all measurements are estimates