



# TEMPORARY ABANDONMENT WELL APPLICATION

OPERATOR: License# \_\_\_\_\_  
 Name: \_\_\_\_\_  
 Address 1: \_\_\_\_\_  
 Address 2: \_\_\_\_\_  
 City: \_\_\_\_\_ State: \_\_\_\_\_ Zip: \_\_\_\_\_ + \_\_\_\_\_  
 Contact Person: \_\_\_\_\_  
 Phone: ( \_\_\_\_\_ ) \_\_\_\_\_  
 Contact Person Email: \_\_\_\_\_  
 Field Contact Person: \_\_\_\_\_  
 Field Contact Person Phone: ( \_\_\_\_\_ ) \_\_\_\_\_

API No. 15- \_\_\_\_\_  
 Spot Description: \_\_\_\_\_  
 \_\_\_\_\_ - \_\_\_\_\_ - \_\_\_\_\_ - \_\_\_\_\_ Sec. \_\_\_\_\_ Twp. \_\_\_\_\_ S. R. \_\_\_\_\_  E  W  
 \_\_\_\_\_ feet from  N /  S Line of Section  
 \_\_\_\_\_ feet from  E /  W Line of Section  
 GPS Location: Lat: \_\_\_\_\_, Long: \_\_\_\_\_  
(e.g. xx.xxxxx) (e.g. -xxx.xxxxx)  
 Datum:  NAD27  NAD83  WGS84  
 County: \_\_\_\_\_ Elevation: \_\_\_\_\_  GL  KB  
 Lease Name: \_\_\_\_\_ Well #: \_\_\_\_\_  
 Well Type: (check one)  Oil  Gas  OG  WSW  Other: \_\_\_\_\_  
 SWD Permit #: \_\_\_\_\_  ENHR Permit #: \_\_\_\_\_  
 Gas Storage Permit #: \_\_\_\_\_  
 Spud Date: \_\_\_\_\_ Date Shut-In: \_\_\_\_\_

	Conductor	Surface	Production	Intermediate	Liner	Tubing
Size						
Setting Depth						
Amount of Cement						
Top of Cement						
Bottom of Cement						

Casing Fluid Level from Surface: \_\_\_\_\_ How Determined? \_\_\_\_\_ Date: \_\_\_\_\_

Casing Squeeze(s): \_\_\_\_\_ to \_\_\_\_\_ w / \_\_\_\_\_ sacks of cement, \_\_\_\_\_ to \_\_\_\_\_ w / \_\_\_\_\_ sacks of cement. Date: \_\_\_\_\_  
(top) (bottom) (top) (bottom)

Do you have a valid Oil & Gas Lease?  Yes  No

Depth and Type:  Junk in Hole at \_\_\_\_\_  Tools in Hole at \_\_\_\_\_ Casing Leaks:  Yes  No Depth of casing leak(s): \_\_\_\_\_  
(depth) (depth)

Type Completion:  ALT. I  ALT. II Depth of:  DV Tool: \_\_\_\_\_ w / \_\_\_\_\_ sacks of cement  Port Collar: \_\_\_\_\_ w / \_\_\_\_\_ sack of cement  
(depth) (depth)

Packer Type: \_\_\_\_\_ Size: \_\_\_\_\_ Inch Set at: \_\_\_\_\_ Feet

Total Depth: \_\_\_\_\_ Plug Back Depth: \_\_\_\_\_ Plug Back Method: \_\_\_\_\_

**Geological Data:**

Formation Name	Formation Top	Formation Base	Completion Information
1. _____	At: _____	to _____ Feet	Perforation Interval _____ to _____ Feet or Open Hole Interval _____ to _____ Feet
2. _____	At: _____	to _____ Feet	Perforation Interval _____ to _____ Feet or Open Hole Interval _____ to _____ Feet

UNDER PENALTY OF PERJURY I HEREBY ATTEST THAT THE INFORMATION CONTAINED HEREIN IS TRUE AND CORRECT TO THE BEST OF MY KNOWLEDGE

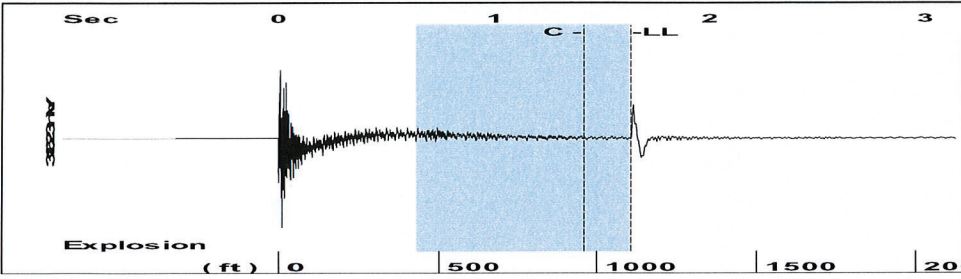
Submitted Electronically

<b>Do NOT Write in This Space - KCC USE ONLY</b>	Date Tested: _____	Results: _____	Date Plugged: _____	Date Repaired: _____	Date Put Back in Service: _____
	Review Completed by: _____ Comments: _____				
TA Approved: <input type="checkbox"/> Yes <input type="checkbox"/> Denied Date: _____					

**Mail to the Appropriate KCC Conservation Office:**

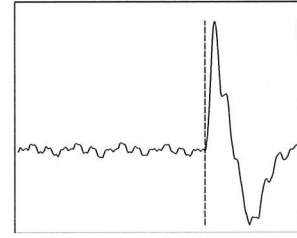
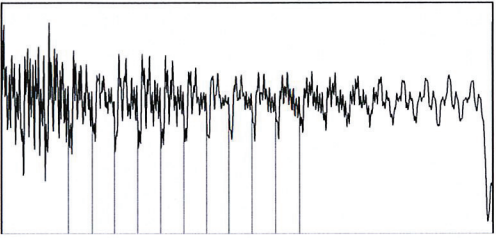
	KCC District Office #1 - 210 E. Frontview, Suite A, Dodge City, KS 67801	Phone 620.225.8888
	KCC District Office #2 / UPGS - 3450 N. Rock Road, Building 600, Suite 601, Wichita, KS 67226	Phone 316.630.4000
	KCC District Office #3 - 1500 SW Seventh Steet, Chanute, KS 66720	Phone 620.432.2300
	KCC District Office #4 - 2301 E. 13th Street, Hays, KS 67601-2651	Phone 785.625.0550

Group: No Property Well: Jensen 13-16 (acquired on: 02/17/14 12:52:08 )



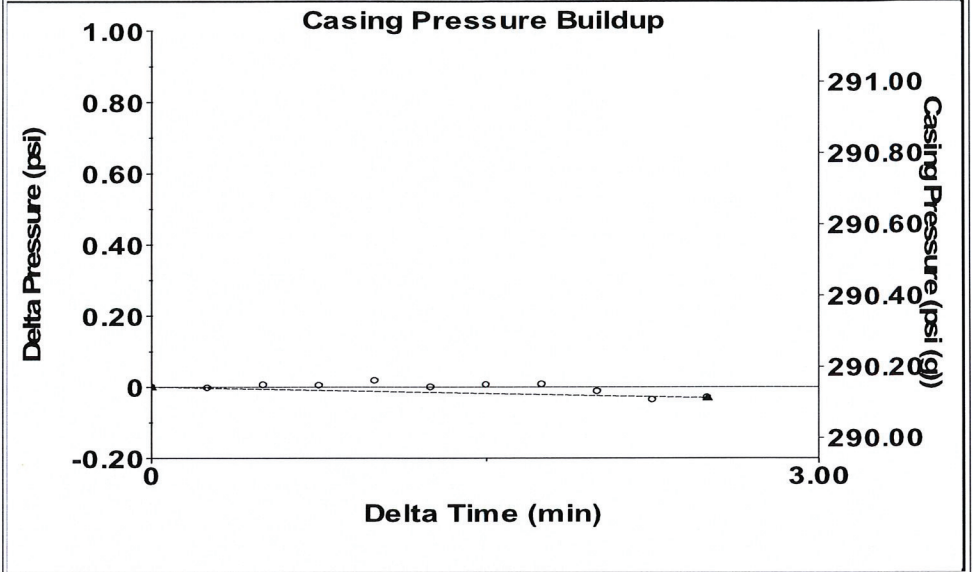
Filter Type High Pass Automatic Collar Count Yes Time 1.639 sec  
 Manual Acoustic Veloc 1343.22 ft/s Manual JTS/sec 21.1864 Joints 34.9616 Jts  
 Depth 1108.28 ft

[ 0.6 to 1.6 (Sec) ]



Analysis Method: Automatic

Group: No Property Well: Jensen 13-16 (acquired on: 02/17/14 12:52:08 )



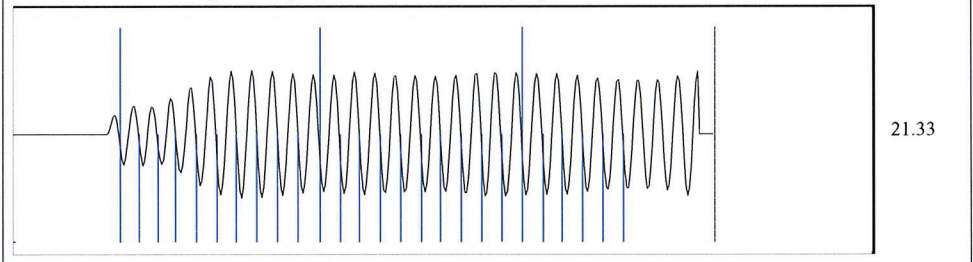
Change in Pressure -0.03 psi PT 9098  
 Change in Time 2.50 min Range 0 - ? psi

Group: No Property Well: Jensen 13-16 (acquired on: 02/17/14 12:52:08 )

Production		Casing Pressure		Producing
Current	Potential	290.1 psi (g)		Casing % Liquid
Oil - * -	- * - BBL/D	Casing Pressure Buildup		100 %
Water - * -	- * - BBL/D	-0.031 psi		
Gas - * -	- * - Mscf/D	2.50 min		
IPR Method	Vogel	Gas/Liquid Interface Pressure		
PBHP/SBHP	- * -	297.7 psi (g)		
Production Efficiency	0.0	Liquid Level Depth		
Oil 40 deg.API		1108.28 ft		
Water 1.05 Sp.Gr.H2O		Tubing Intake Depth		
Gas 0.64 Sp.Gr.AIR		1221.78 ft		
Acoustic Velocity	1352.39 ft/s	Formation Depth		
		1164.00 ft		
Formation Submergence			Tubing Intake	
Total Gaseous Liquid Column HT (TVD)	113 ft		342.4 psi (g)	
Equivalent Gas Free Liquid HT (TVD)	113 ft		Producing BHP	
			316.1 psi (g)	
			Static BHP	
			250.0 psi (g)	

Jenson 13-16 first shot

Group: No Property Well: Jensen 13-16 (acquired on: 02/17/14 12:52:08 )



Acoustic Velocity	1352.39 ft/s	Joints counted	25
Joints Per Second	21.3311 jts/sec	Joints to liquid level	34.9616
Depth to liquid level	1108.28 ft	Filter Width	19.1864 23.1864
Automatic Collar Count	Yes	Time to 1st Collar	0.248 1.42