



**TEMPORARY ABANDONMENT WELL APPLICATION**

All blanks must be complete

OPERATOR: License# \_\_\_\_\_  
Name: \_\_\_\_\_  
Address 1: \_\_\_\_\_  
Address 2: \_\_\_\_\_  
City: \_\_\_\_\_ State: \_\_\_\_\_ Zip: \_\_\_\_\_ + \_\_\_\_\_  
Contact Person: \_\_\_\_\_  
Phone: ( \_\_\_\_\_ ) \_\_\_\_\_  
Contact Person Email: \_\_\_\_\_  
Field Contact Person: \_\_\_\_\_  
Field Contact Person Phone: ( \_\_\_\_\_ ) \_\_\_\_\_

API No. 15- \_\_\_\_\_  
Spot Description: \_\_\_\_\_  
\_\_\_\_ - \_\_\_\_ - \_\_\_\_ - \_\_\_\_ Sec. \_\_\_\_\_ Twp. \_\_\_\_\_ S. R. \_\_\_\_\_  E  W  
\_\_\_\_\_ feet from  N /  S Line of Section  
\_\_\_\_\_ feet from  E /  W Line of Section  
GPS Location: Lat: \_\_\_\_\_, Long: \_\_\_\_\_  
(e.g. xx.xxxxx) (e.g. -xxx.xxxxx)  
Datum:  NAD27  NAD83  WGS84  
County: \_\_\_\_\_ Elevation: \_\_\_\_\_  GL  KB  
Lease Name: \_\_\_\_\_ Well #: \_\_\_\_\_  
Well Type: (check one)  Oil  Gas  OG  WSW  Other: \_\_\_\_\_  
 SWD Permit #: \_\_\_\_\_  ENHR Permit #: \_\_\_\_\_  
 Gas Storage Permit #: \_\_\_\_\_  
Spud Date: \_\_\_\_\_ Date Shut-In: \_\_\_\_\_

	Conductor	Surface	Production	Intermediate	Liner	Tubing
Size						
Setting Depth						
Amount of Cement						
Top of Cement						
Bottom of Cement						

Casing Fluid Level from Surface: \_\_\_\_\_ How Determined? \_\_\_\_\_ Date: \_\_\_\_\_  
Casing Squeeze(s): \_\_\_\_\_ to \_\_\_\_\_ w / \_\_\_\_\_ sacks of cement, \_\_\_\_\_ to \_\_\_\_\_ w / \_\_\_\_\_ sacks of cement. Date: \_\_\_\_\_  
(top) (bottom) (top) (bottom)  
Do you have a valid Oil & Gas Lease?  Yes  No  
Depth and Type:  Junk in Hole at \_\_\_\_\_ (depth)  Tools in Hole at \_\_\_\_\_ (depth) Casing Leaks:  Yes  No Depth of casing leak(s): \_\_\_\_\_  
Type Completion:  ALT. I  ALT. II Depth of:  DV Tool: \_\_\_\_\_ w / \_\_\_\_\_ sacks of cement  Port Collar: \_\_\_\_\_ w / \_\_\_\_\_ sack of cement  
(depth) (depth)  
Packer Type: \_\_\_\_\_ Size: \_\_\_\_\_ Inch Set at: \_\_\_\_\_ Feet  
Total Depth: \_\_\_\_\_ Plug Back Depth: \_\_\_\_\_ Plug Back Method: \_\_\_\_\_

**Geological Data:**

Formation Name	Formation Top	Formation Base	Completion Information
1. _____	At: _____	to _____ Feet	Perforation Interval _____ to _____ Feet or Open Hole Interval _____ to _____ Feet
2. _____	At: _____	to _____ Feet	Perforation Interval _____ to _____ Feet or Open Hole Interval _____ to _____ Feet

UNDER PENALTY OF PERJURY I HEREBY ATTEST THAT THE INFORMATION CONTAINED HEREIN IS TRUE AND CORRECT TO THE BEST OF MY KNOWLEDGE

Submitted Electronically

**Do NOT Write in This Space - KCC USE ONLY**

Date Tested: \_\_\_\_\_ Results: \_\_\_\_\_ Date Plugged: \_\_\_\_\_ Date Repaired: \_\_\_\_\_ Date Put Back in Service: \_\_\_\_\_

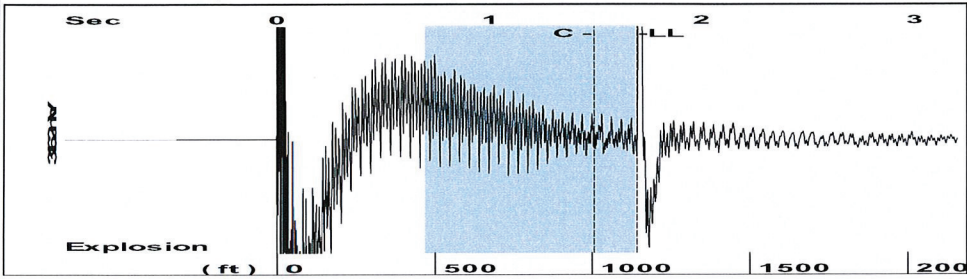
Review Completed by: \_\_\_\_\_ Comments: \_\_\_\_\_

TA Approved:  Yes  Denied Date: \_\_\_\_\_

**Mail to the Appropriate KCC Conservation Office:**

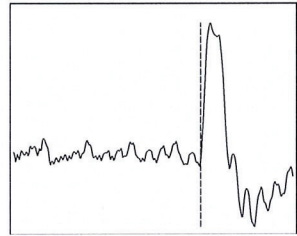
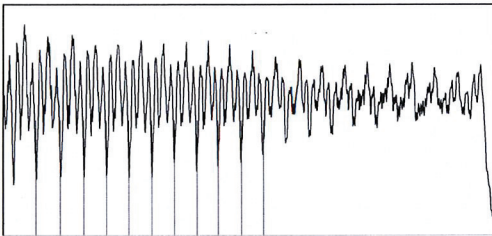
	KCC District Office #1 - 210 E. Frontview, Suite A, Dodge City, KS 67801	Phone 620.225.8888
	KCC District Office #2 / UPGS - 3450 N. Rock Road, Building 600, Suite 601, Wichita, KS 67226	Phone 316.630.4000
	KCC District Office #3 - 1500 SW Seventh Steet, Chanute, KS 66720	Phone 620.432.2300
	KCC District Office #4 - 2301 E. 13th Street, Hays, KS 67601-2651	Phone 785.625.0550

Group: Fish Creek Well: Stuart 23-10 (acquired on: 02/17/14 11:28:43 )



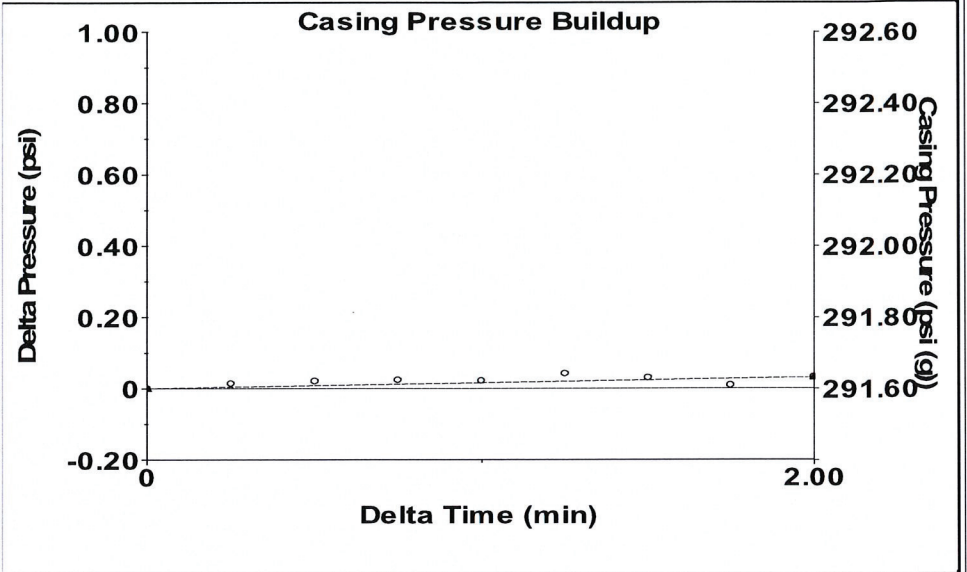
Filter Type High Pass Automatic Collar Count Yes Time 1.699 sec  
 Manual Acoustic Velocity 1363.44 ft/s Manual JTS/sec 21.5054 Joints 36.0899 Jts  
 Depth 1144.05 ft

[ 0.7 to 1.7 (Sec) ]



Analysis Method: Automatic

Group: Fish Creek Well: Stuart 23-10 (acquired on: 02/17/14 11:28:43 )



Change in Pressure 0.03 psi PT 9098  
 Change in Time 2.00 min Range 0 - ? psi

Group: Fish Creek Well: Stuart 23-10 (acquired on: 02/17/14 11:28:43 )

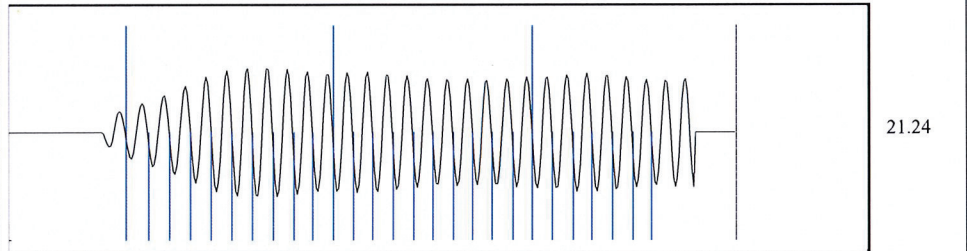
**Production**  
 Current Potential Casing Pressure  
 Oil - \* - - \* - BBL/D 291.6 psi (g)  
 Water - \* - - \* - BBL/D Casing Pressure Buildup  
 Gas - \* - - \* - Mscf/D 0.031 psi  
 2.00 min  
 IPR Method Vogel Gas/Liquid Interface Pressure  
 PBHP/SBHP - \* - 299.5 psi (g)  
 Production Efficiency 0.0  
 Oil 40 deg.API Liquid Level Depth  
 Water 1.05 Sp.Gr.H2O 1144.05 ft  
 Gas 0.64 Sp.Gr.AIR Tubing Intake Depth  
 1234.75 ft  
 Acoustic Velocity 1346.73 ft/s Formation Depth  
 1210.00 ft



Producing  
 Casing % Liquid 100 %  
 Tubing Intake 332.5 psi (g)  
 Producing BHP 321.3 psi (g)  
 Static BHP 290.0 psi (g)

stuart 23-10 first shot

Group: Fish Creek Well: Stuart 23-10 (acquired on: 02/17/14 11:28:43 )



Acoustic Velocity 1346.73 ft/s Joints counted 26  
 Joints Per Second 21.2418 jts/sec Joints to liquid level 36.0899  
 Depth to liquid level 1144.05 ft Filter Width 19.5054 23.5054  
 Automatic Collar Count Yes Time to 1st Collar 0.272 1.496