



**TEMPORARY ABANDONMENT WELL APPLICATION**

All blanks must be complete

OPERATOR: License# \_\_\_\_\_  
 Name: \_\_\_\_\_  
 Address 1: \_\_\_\_\_  
 Address 2: \_\_\_\_\_  
 City: \_\_\_\_\_ State: \_\_\_\_\_ Zip: \_\_\_\_\_ + \_\_\_\_\_  
 Contact Person: \_\_\_\_\_  
 Phone: ( \_\_\_\_\_ ) \_\_\_\_\_  
 Contact Person Email: \_\_\_\_\_  
 Field Contact Person: \_\_\_\_\_  
 Field Contact Person Phone: ( \_\_\_\_\_ ) \_\_\_\_\_

API No. 15- \_\_\_\_\_  
 Spot Description: \_\_\_\_\_  
 \_\_\_\_\_ - \_\_\_\_\_ - \_\_\_\_\_ - \_\_\_\_\_ Sec. \_\_\_\_\_ Twp. \_\_\_\_\_ S. R. \_\_\_\_\_  E  W  
 \_\_\_\_\_ feet from  N /  S Line of Section  
 \_\_\_\_\_ feet from  E /  W Line of Section  
 GPS Location: Lat: \_\_\_\_\_, Long: \_\_\_\_\_  
(e.g. xx.xxxxx) (e.g. -xxx.xxxxx)  
 Datum:  NAD27  NAD83  WGS84  
 County: \_\_\_\_\_ Elevation: \_\_\_\_\_  GL  KB  
 Lease Name: \_\_\_\_\_ Well #: \_\_\_\_\_  
 Well Type: (check one)  Oil  Gas  OG  WSW  Other: \_\_\_\_\_  
 SWD Permit #: \_\_\_\_\_  ENHR Permit #: \_\_\_\_\_  
 Gas Storage Permit #: \_\_\_\_\_  
 Spud Date: \_\_\_\_\_ Date Shut-In: \_\_\_\_\_

	Conductor	Surface	Production	Intermediate	Liner	Tubing
Size						
Setting Depth						
Amount of Cement						
Top of Cement						
Bottom of Cement						

Casing Fluid Level from Surface: \_\_\_\_\_ How Determined? \_\_\_\_\_ Date: \_\_\_\_\_  
 Casing Squeeze(s): \_\_\_\_\_ to \_\_\_\_\_ w / \_\_\_\_\_ sacks of cement, \_\_\_\_\_ to \_\_\_\_\_ w / \_\_\_\_\_ sacks of cement. Date: \_\_\_\_\_  
(top) (bottom) (top) (bottom)  
 Do you have a valid Oil & Gas Lease?  Yes  No  
 Depth and Type:  Junk in Hole at \_\_\_\_\_  Tools in Hole at \_\_\_\_\_ Casing Leaks:  Yes  No Depth of casing leak(s): \_\_\_\_\_  
(depth) (depth)  
 Type Completion:  ALT. I  ALT. II Depth of:  DV Tool: \_\_\_\_\_ w / \_\_\_\_\_ sacks of cement  Port Collar: \_\_\_\_\_ w / \_\_\_\_\_ sack of cement  
(depth) (depth)  
 Packer Type: \_\_\_\_\_ Size: \_\_\_\_\_ Inch Set at: \_\_\_\_\_ Feet  
 Total Depth: \_\_\_\_\_ Plug Back Depth: \_\_\_\_\_ Plug Back Method: \_\_\_\_\_

**Geological Data:**

Formation Name	Formation Top	Formation Base	Completion Information
1. _____	At: _____	to _____ Feet	Perforation Interval _____ to _____ Feet or Open Hole Interval _____ to _____ Feet
2. _____	At: _____	to _____ Feet	Perforation Interval _____ to _____ Feet or Open Hole Interval _____ to _____ Feet

UNDER PENALTY OF PERJURY I HEREBY ATTEST THAT THE INFORMATION CONTAINED HEREIN IS TRUE AND CORRECT TO THE BEST OF MY KNOWLEDGE

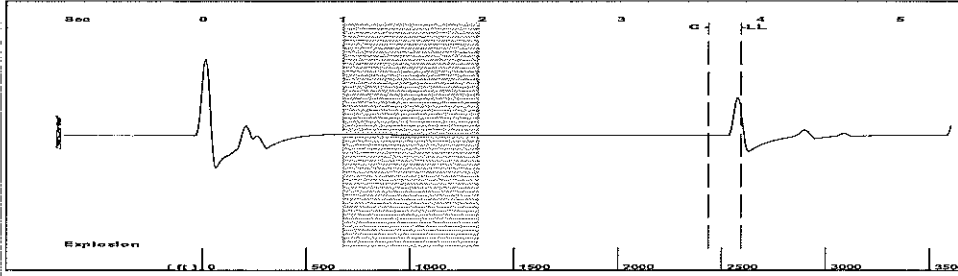
Submitted Electronically

<b>Do NOT Write in This Space - KCC USE ONLY</b>	Date Tested: _____	Results: _____	Date Plugged: _____	Date Repaired: _____	Date Put Back in Service: _____
	Review Completed by: _____ Comments: _____				
TA Approved: <input type="checkbox"/> Yes <input type="checkbox"/> Denied Date: _____					

**Mail to the Appropriate KCC Conservation Office:**

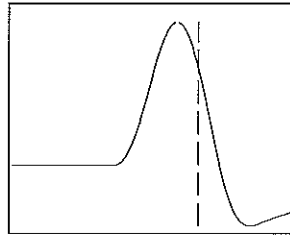
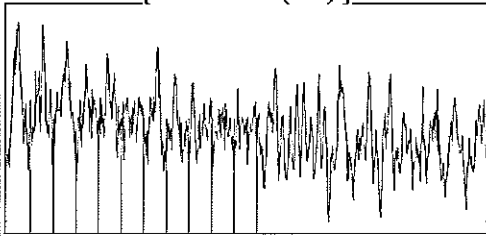
	KCC District Office #1 - 210 E. Frontview, Suite A, Dodge City, KS 67801	Phone 620.225.8888
	KCC District Office #2 / UPGS - 3450 N. Rock Road, Building 600, Suite 601, Wichita, KS 67226	Phone 316.630.4000
	KCC District Office #3 - 1500 SW Seventh Steet, Chanute, KS 66720	Phone 620.432.2300
	KCC District Office #4 - 2301 E. 13th Street, Hays, KS 67601-2651	Phone 785.625.0550

Group: MyWells Well: Bryant B 4-8 (acquired on: 12/18/13 11:45:49)



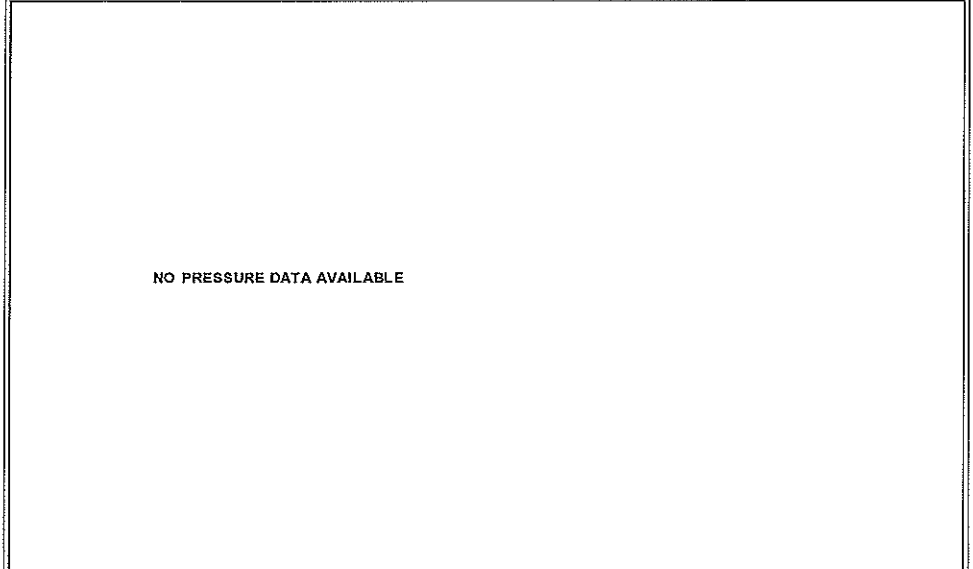
Filter Type High Pass Automatic Collar Count Yes Time 3.861 sec  
 Manual Acoustic Veloc 1348.94 ft/s Manual JTS/sec 21.2766 Joints 81.7476 Jts  
 Depth 2591.40 ft

[ 1.0 to 2.0 (Sec) ]



Analysis Method: Automatic

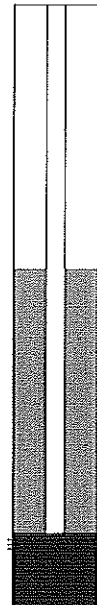
Group: MyWells Well: Bryant B 4-8 (acquired on: 12/18/13 11:45:49)



Change in Pressure 0.00 psi NONE  
 Range 0 - ? psi  
 Change in Time 0.00 min

Group: MyWells Well: Bryant B 4-8 (acquired on: 12/18/13 11:45:49)

<b>Production</b>		<b>Potential</b>	<b>Casing Pressure</b>
Current			
Oil -*-	-*- BBL/D		0.0 psi (g)
Water -*-	-*- BBL/D		Casing Pressure Buildup
Gas -*-	-*- Mscf/D		-* - psi
			-* - min
IPR Method	Vogel		Gas/Liquid Interface Pressure
PBHP/SBHP	-*-		0.9 psi (g)
Production Efficiency	0.0		
		<b>Liquid Level Depth</b>	
Oil 40 deg.API		2591.40 ft	
Water 1.05 Sp.Gr.H2O			<b>Pump Intake Depth</b>
Gas 0.65 Sp.Gr.AIR			5936.00 ft
			<b>Formation Depth</b>
Acoustic Velocity 1342.35 ft/s			6069.00 ft



**Producing**

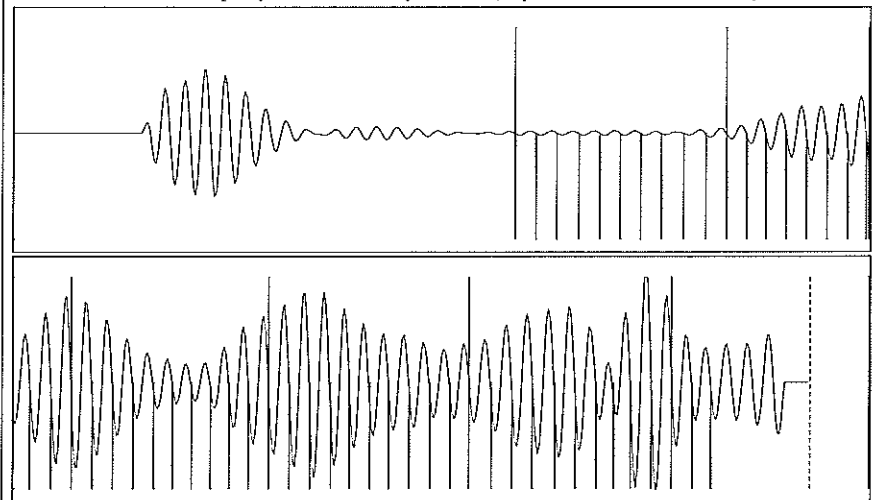
Annular Gas Flow 0 Mscf/D  
 % Liquid 100 %

**Pump Intake**  
 1097.4 psi (g)  
**Producing BHP**  
 1157.8 psi (g)  
**Static BHP**  
 -\*- psi (g)

**Formation Submergence**  
 Total Gaseous Liquid Column HT (TVD) 3345 ft  
 Equivalent Gas Free Liquid HT (TVD) 3345 ft

**Acoustic Test**

Group: MyWells Well: Bryant B 4-8 (acquired on: 12/18/13 11:45:49)



Acoustic Velocity	1342.35 ft/s	Joints counted	52
Joints Per Second	21.1726 jts/sec	Joints to liquid level	81.7476
Depth to liquid level	2591.4 ft	Filter Width	19.2766 23.2766
Automatic Collar Count	Yes	Time to 1st Collar	1.172 3.628

Conservation Division  
District Office No. 1  
210 E. Frontview, Suite A  
Dodge City, KS 67801



Phone: 620-225-8888  
Fax: 620-225-8885  
<http://kcc.ks.gov/>

Shari Feist Albrecht, Chair  
Thomas E. Wright, Commissioner  
Jay Scott Emler, Commissioner

Sam Brownback, Governor

April 03, 2014

Sarah Rodriguez  
Chesapeake Operating, Inc.  
6200 N WESTERN AVE  
PO BOX 18496  
OKLAHOMA CITY, OK 73118-1046

Re: Temporary Abandonment  
API 15-175-21253-00-00  
BRYANT B 4-8  
SE/4 Sec.08-33S-33W  
Seward County, Kansas

Dear Sarah Rodriguez:

Your application for Temporary Abandonment (TA) of the above-listed well is denied for the following reasons(s):

**Lack of Lease**

In accordance with K.A.R. 82-3-111, this well must be plugged or returned to service by May 03, 2014.

Sincerely,

Steve Pfeifer