



TRILOBITE TESTING, INC.

DRILL STEM TEST REPORT

Blue Goose Drilling Inc.
 P.O. Box 1413
 Great Bend, KS 67530
 ATTN: Vern Schrag

4-18s-27w-Ness, Co, KS
Borell-E-#1
 Job Ticket: 54539 **DST#:1**
 Test Start: 2013.11.17 @ 11:20:00

GENERAL INFORMATION:

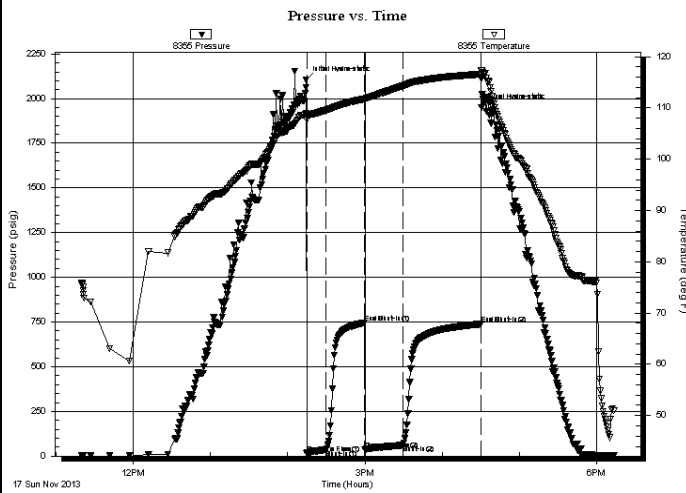
Formation: **Lkc "K"**
 Deviated: No Whipstock: ft (KB)
 Time Tool Opened: 14:14:45
 Time Test Ended: 18:13:00
 Interval: **4126.00 ft (KB) To 4176.00 ft (KB) (TVD)**
 Total Depth: 4176.00 ft (KB) (TVD)
 Hole Diameter: 7.88 inches Hole Condition: Fair
 Test Type: Conventional Bottom Hole (Initial)
 Tester: Cornelio Landa III (
 Unit No: 58
 Reference Elevations: 2594.00 ft (KB)
 2587.00 ft (CF)
 KB to GR/CF: 7.00 ft

Serial #: 8355

Outside

Press@RunDepth: 61.52 psig @ 4128.00 ft (KB)
 Start Date: 2013.11.17 End Date: 2013.11.17
 Start Time: 11:20:05 End Time: 18:12:59
 Capacity: 8000.00 psig
 Last Calib.: 2013.11.17
 Time On Btm: 2013.11.17 @ 14:14:15
 Time Off Btm: 2013.11.17 @ 16:30:30

TEST COMMENT: IF: 3 1/2 in. blow
 ISI: Bled off in 2 min.- No return
 FF: 8 1/2 in. of blow
 FSI: Bled off in 2 min.- No return



PRESSURE SUMMARY

Time (Min.)	Pressure (psig)	Temp (deg F)	Annotation
0	2106.24	108.97	Initial Hydro-static
1	16.31	107.69	Open To Flow(1)
16	36.28	109.58	Shut-In(1)
46	746.32	111.77	End Shut-In(1)
46	34.55	111.76	Open To Flow(2)
76	61.52	114.38	Shut-In(2)
136	738.63	116.61	End Shut-In(2)
137	1948.66	117.25	Final Hydro-static

Recovery

Length (ft)	Description	Volume (bbl)
120.00	Wocm 5w 20o 75m	0.59
0.00	Rw .90 @ 40=11000	0.00

Gas Rates

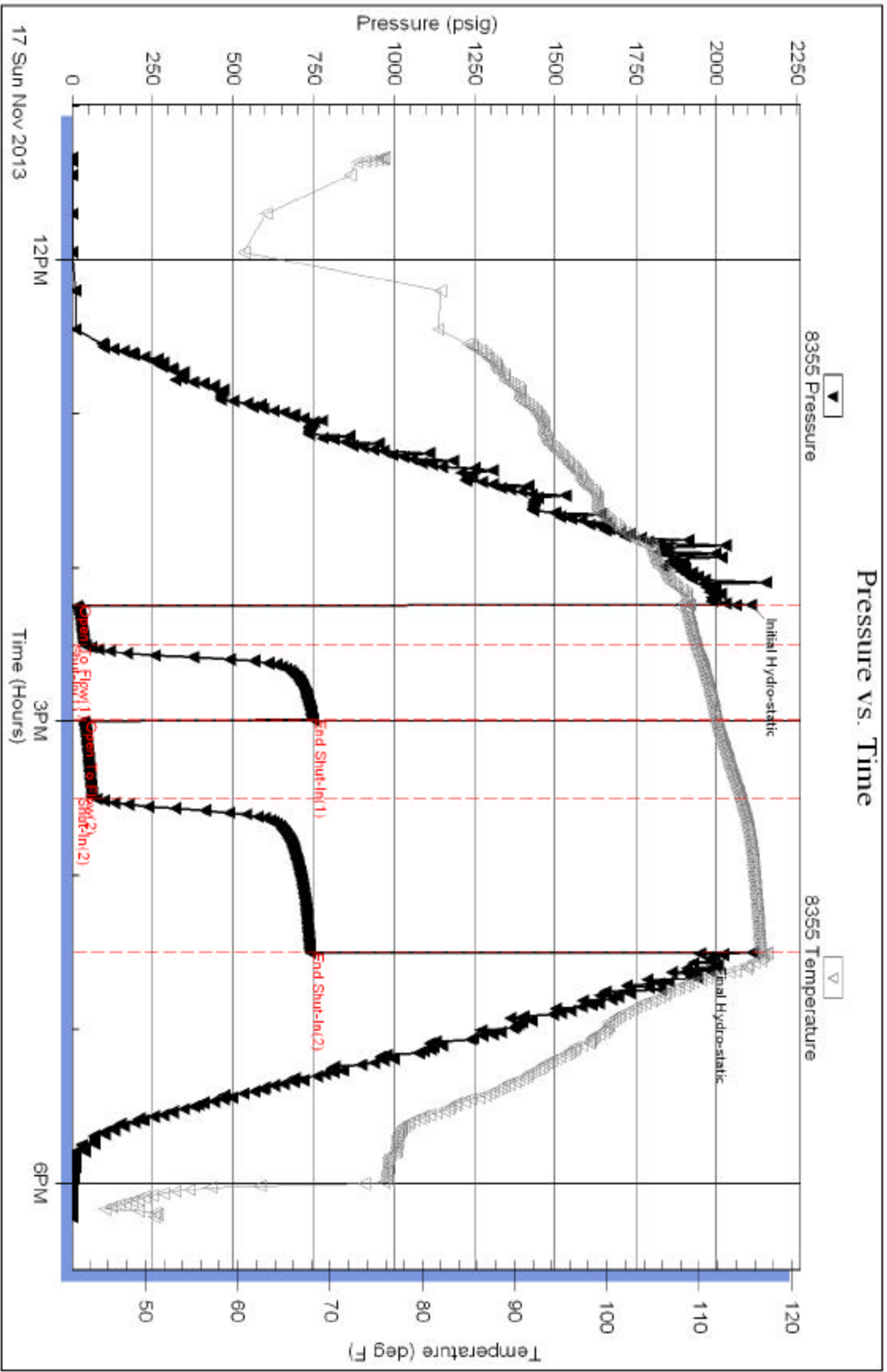
Choke (inches)	Pressure (psig)	Gas Rate (Mcf/d)

Serial #: 8355

Outside Blue Goose Drilling Inc.

Borel-E#1

DST Test Number: 1



Trickle Testing, Inc

Ref. No: 54539

Printed: 2013.11.17 @ 18:49:16