

KEVIN L. KESSLER
CONSULTING PETROLEUM GEOLOGIST
(316) 522-7338

OPERATOR : MULL DRILLING COMPANY INC.
LEASE : HENNING - MCDONALD WELL # : 1 - 21
LOCATION : 1360' FNL & 2515' FEL
SEC: 21 TWP : 15 S RGE : 23 W
COUNTY : TREGO STATE : KANSAS

ELEVATION
KB : 2352
GL : 2347
 MEASUREMENTS FROM
KB

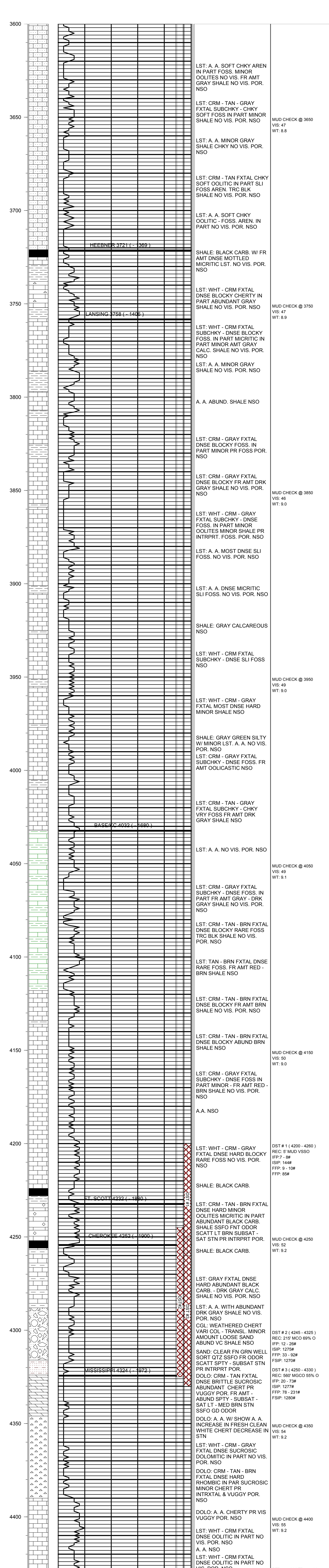
CONTRACTOR : W. W. DRILLING COMPANY RIG # 10
COMM : 11 / 09 / 2013 COMP : 11 / 16 / 2013
RTD : 4430 LOG TD : 4433
SAMPLES SAVED FROM : 3600 TO : RTD
GEOLOGICAL SUPERVISION FROM : 3600 TO : RTD
MUD UP : 3500 TYPE MUD : CHEMICAL

CASING RECORD
SURFACE :
8 5/8" @ 205'
PRODUCTION :
5 1/2" @ 4430'

FORMATION	TOP	SAMPLE	DATUM	TOP	LOG	DATUM	STRUCT. COMP.
HEEBNER	3721	- 1369	3721	- 1369			FLAT
LANSING	3758	- 1406	3758	- 1406			+ 01
STARK
BASE / KC	4032	- 1680	4032	- 1680			+ 03
FORT SCOTT	4232	- 1880	4232	- 1880			- 03
CHEROKEE	4252	- 1900	4252	- 1900			FLAT
MISSISSIPPI	4324	- 1972	4324	- 1972			- 07

ELECTRICAL SURVEYS:
 CDL/CNL
 DIL
 MICRO
 SONIC

REFERENCE WELL FOR STRUCTURAL COMPARISON :
MULL # 1 - 21 MCDONALD - SCHWIEN UNIT SEC 21 - T 15 S - R 23 W TREGO COUNTY KANSAS



COMMENTS:

**5 1/2" PRODUCTION CASING WAS SET
 TO FURTHER EVALUATE THE
 PRODUCTIVITY OF THIS WELL**

KEVIN L. KESSLER