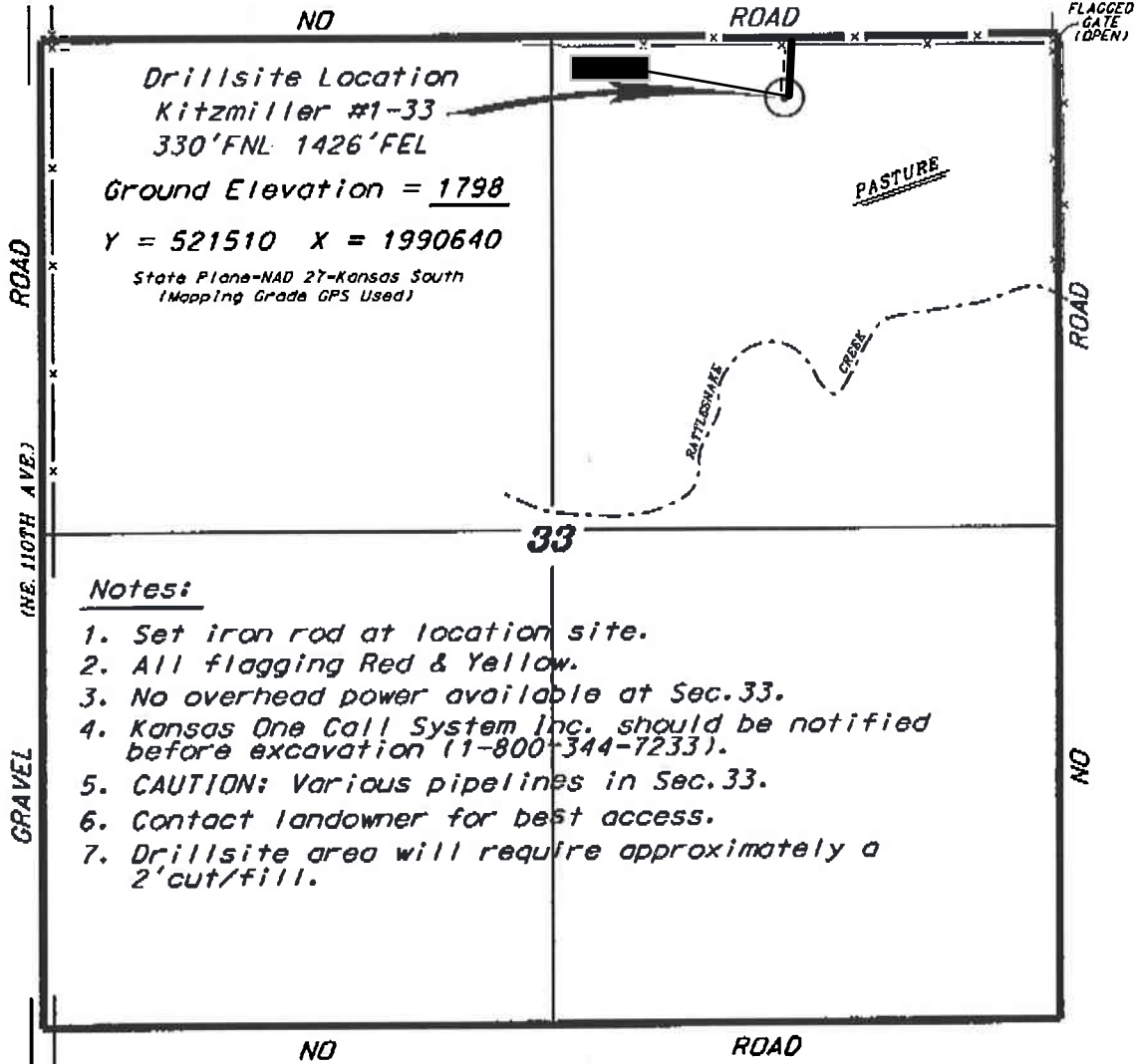


L.D. DRILLING, INC.
KITZMILLER LEASE
NE. 1/4, SECTION 33, T22S, R11W
STAFFORD COUNTY, KANSAS

Directions:

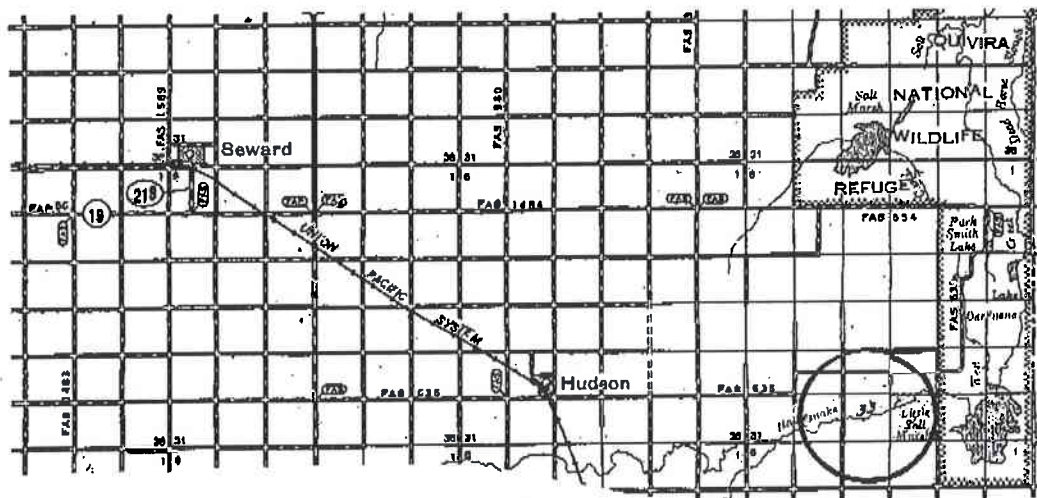
From the Intersection of Highway 281 and Highway 19, go 4.0 miles South, then go 10.0 miles East, then go 0.5 miles North, then go 2.0 miles East, then go 0.5 miles South to the NE. corner of Section 33, then go 0.27 miles West, then go 0.06 miles South to location.



Notes:

1. Set iron rod at location site.
2. All flagging Red & Yellow.
3. No overhead power available at Sec. 33.
4. Kansas One Call System Inc. should be notified before excavation (1-800-344-7233).
5. CAUTION: Various pipelines in Sec. 33.
6. Contact landowner for best access.
7. Drillsite area will require approximately a 2' cut/fill.

*Ingress and egress to location as shown on this plat is per usage only and may not be legally opened for public use. Contact landowner, tenant and county road department for access.



• Controlling data is based upon the best maps and photographs available to us and upon a regular section of land containing 640 acres.
 • Approximate section lines were determined using the normal standards of care of oilfield surveyors practicing in the state of Kansas. The section corners, which establish the precise section lines, were not necessarily located, and the exact location of the drillsite location in the section is not guaranteed. Therefore, the operator securing this service and accepting this plat and all other parties relying thereon agree to hold Central Kansas Oilfield Services, Inc., its officers and employees harmless from all losses, costs and expenses and shall entities released from any liability from incidental or consequential damages.
 • Elevations derived from National Geodetic Vertical Datum.

Date February 28, 2014