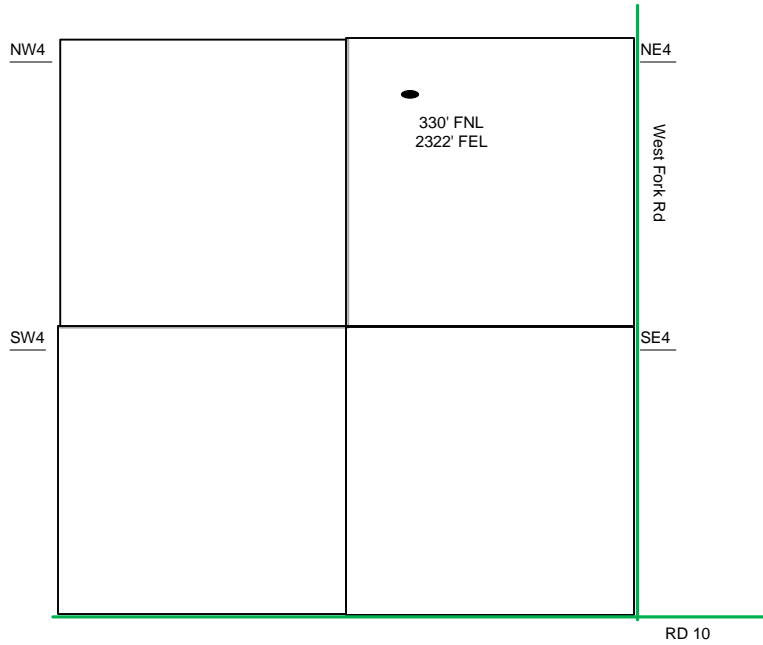
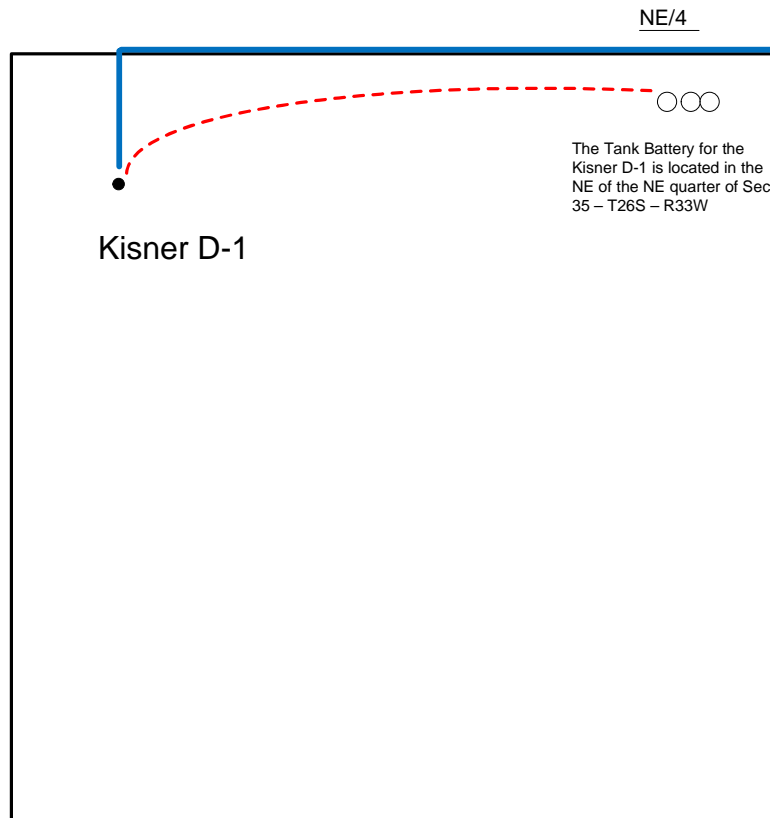


Proposed Plan of Construction
 Kisner D-1
 Sec 35 T26S-R33W
 Finney County, KS



Sec 35 – T26S – R33W



Proposed Details of
 NE/ Sec 35 – T26S – R33W

Note-Drawing **Not** to Scale

Proposed Site Diagram
 Kisner D-1
 March 5, 2014

