



## DRILL STEM TEST REPORT

Prepared For: **F.G Holl Company LLC.**

9431 East Central Suit 100  
Wichita Kansas 67206

ATTN: Ryan Greenbaum

**Sonja Phillips 1-22**

**22-20s-14w-Barton**

Start Date: 2014.02.09 @ 11:39:00

End Date: 2014.02.09 @ 18:46:00

Job Ticket #: 19256                      DST #: 5

Superior Testers Enterprises LLC  
PO Box 138 Great Bend KS 67530  
1-800-792-6902

Printed: 2014.02.10 @ 08:54:01



# DRILL STEM TEST REPORT

F.G Holl Company LLC.

**22-20s-14w-Barton**

9431 East Central Suit 100  
Wichita Kansas 67206

**Sonja Phillips 1-22**

Job Ticket: 19256

**DST#: 5**

ATTN: Ryan Greenbaum

Test Start: 2014.02.09 @ 11:39:00

## GENERAL INFORMATION:

Formation: **Lansing J**

Deviated: No Whipstock: ft (KB)

Time Tool Opened: 13:16:00

Time Test Ended: 18:46:00

Test Type: Conventional Bottom Hole (Initial)

Tester: Dustin Ellis

Unit No: 3315-Great Bend-20

**Interval: 3426.00 ft (KB) To 3448.00 ft (KB) (TVD)**

Reference Elevations: 1895.00 ft (KB)

Total Depth: 3448.00 ft (KB) (TVD)

1887.00 ft (CF)

Hole Diameter: 7.88 inches Hole Condition: Fair

KB to GR/CF: 8.00 ft

**Serial #: 8931**

**Inside**

Press@RunDepth: 92.45 psig @ 3433.00 ft (KB)

Capacity: 5000.00 psig

Start Date: 2014.02.09

End Date:

2014.02.09

Last Calib.:

2014.02.10

Start Time:

11:40:00

End Time:

18:46:00

Time On Btm:

2014.02.09 @ 13:15:30

Time Off Btm:

2014.02.09 @ 16:43:00

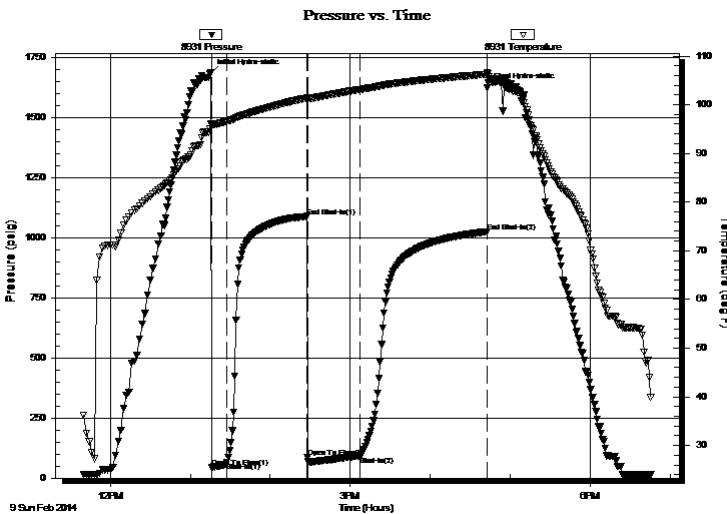
**TEST COMMENT:** 1st Open 10 minutes Good building blow built to bottom bucket in 7 minutes.

1st Shut in 60 minutes No blow back.

2nd Open 45 minutes Strong building blow built to the bottom of a 5 gallon bucket of water in 7 minutes.

2nd Shut in 90 minutes No blow back.

## PRESSURE SUMMARY



Time (Min.)	Pressure (psig)	Temp (deg F)	Annotation
0	1685.85	96.17	Initial Hydro-static
1	43.19	95.85	Open To Flow (1)
13	66.84	96.59	Shut-In(1)
72	1089.94	101.39	End Shut-In(1)
73	86.13	101.09	Open To Flow (2)
112	92.45	103.12	Shut-In(2)
207	1025.88	106.25	End Shut-In(2)
208	1623.85	106.64	Final Hydro-static

## Recovery

Length (ft)	Description	Volume (bbl)
81.00	Mud cut oil Oil 90% Mud 10%	1.14
111.00	Oil cut mud	1.56
0.00	Oil 30% Mud 60% Water 10%	0.00

## Gas Rates

	Choke (inches)	Pressure (psig)	Gas Rate (Mcf/d)



# DRILL STEM TEST REPORT

F.G Holl Company LLC.

**22-20s-14w-Barton**

9431 East Central Suit 100  
Wichita Kansas 67206

**Sonja Phillips 1-22**

Job Ticket: 19256

**DST#: 5**

ATTN: Ryan Greenbaum

Test Start: 2014.02.09 @ 11:39:00

## GENERAL INFORMATION:

Formation: **Lansing J**

Deviated: No Whipstock: ft (KB)

Time Tool Opened: 13:16:00

Time Test Ended: 18:46:00

Test Type: Conventional Bottom Hole (Initial)

Tester: Dustin Ellis

Unit No: 3315-Great Bend-20

**Interval: 3426.00 ft (KB) To 3448.00 ft (KB) (TVD)**

Reference Elevations: 1895.00 ft (KB)

Total Depth: 3448.00 ft (KB) (TVD)

1887.00 ft (CF)

Hole Diameter: 7.88 inches Hole Condition: Fair

KB to GR/CF: 8.00 ft

**Serial #: 6651 Outside**

Press@RunDepth: 1028.20 psig @ 3433.00 ft (KB)

Capacity: 5000.00 psig

Start Date: 2014.02.09

End Date: 2014.02.09

Last Calib.: 2014.02.10

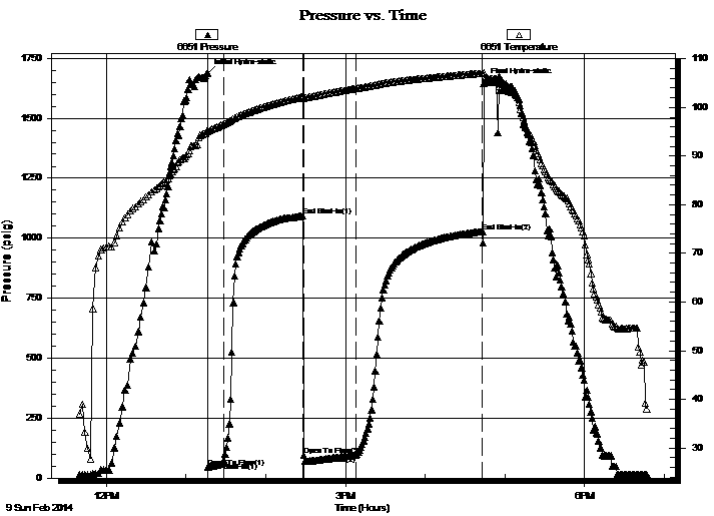
Start Time: 11:40:00

End Time: 18:46:30

Time On Btm: 2014.02.09 @ 13:16:00

Time Off Btm: 2014.02.09 @ 16:44:00

**TEST COMMENT:** 1st Open 10 minutes Good building blow built to bottom bucket in 7 minutes.  
1st Shut in 60 minutes No blow back.  
2nd Open 45 minutes Strong building blow built to the bottom of a 5 gallon bucket of water in 7 minutes.  
2nd Shut in 90 minutes No blow back.



## PRESSURE SUMMARY

Time (Min.)	Pressure (psig)	Temp (deg F)	Annotation
0	1687.83	95.32	Initial Hydro-static
1	46.45	95.04	Open To Flow (1)
12	67.65	96.53	Shut-In(1)
72	1092.37	102.20	End Shut-In(1)
73	94.63	101.83	Open To Flow (2)
112	94.85	103.88	Shut-In(2)
207	1028.20	107.03	End Shut-In(2)
208	1646.72	107.20	Final Hydro-static

## Recovery

Length (ft)	Description	Volume (bbl)
81.00	Mud cut oil Oil 90% Mud 10%	1.14
111.00	Oil cut mud	1.56
0.00	Oil 30% Mud 60% Water 10%	0.00

## Gas Rates

	Choke (inches)	Pressure (psig)	Gas Rate (Mcf/d)



# DRILL STEM TEST REPORT

TOOL DIAGRAM

F.G Holl Company LLC.

**22-20s-14w-Barton**

9431 East Central Suit 100  
Wichita Kansas 67206

**Sonja Phillips 1-22**

Job Ticket: 19256

**DST#: 5**

ATTN: Ryan Greenbaum

Test Start: 2014.02.09 @ 11:39:00

## Tool Information

Drill Pipe:	Length: 3427.00 ft	Diameter: 3.80 inches	Volume: 48.07 bbl	Tool Weight: 2000.00 lb
Heavy Wt. Pipe:	Length: 0.00 ft	Diameter: 0.00 inches	Volume: 0.00 bbl	Weight set on Packer: 20000.00 lb
Drill Collar:	Length: 0.00 ft	Diameter: 0.00 inches	Volume: 0.00 bbl	Weight to Pull Loose: 59000.00 lb
			<u>Total Volume: 48.07 bbl</u>	Tool Chased 0.00 ft
Drill Pipe Above KB:	29.00 ft			String Weight: Initial 46000.00 lb
Depth to Top Packer:	3426.00 ft			Final 46000.00 lb
Depth to Bottom Packer:	ft			
Interval between Packers:	12.00 ft			
Tool Length:	40.00 ft			
Number of Packers:	2	Diameter: 6.75 inches		

Tool Comments:

Tool Description	Length (ft)	Serial No.	Position	Depth (ft)	Accum. Lengths
------------------	-------------	------------	----------	------------	----------------

Shut In Tool	5.00			3403.00	
Hydraulic tool	5.00			3408.00	
Jars	6.00			3414.00	
Safety Joint	2.00			3416.00	
Top Packer	5.00			3421.00	
Packer	5.00			3426.00	28.00 Bottom Of Top Packer
Perforations	7.00			3433.00	
Recorder	0.00	8931	Inside	3433.00	
Recorder	0.00	6651	Outside	3433.00	
Bull Plug	5.00			3438.00	12.00 Anchor Tool
<b>Total Tool Length:</b>	<b>40.00</b>				



# DRILL STEM TEST REPORT

**FLUID SUMMARY**

F.G Holl Company LLC.

**22-20s-14w-Barton**

9431 East Central Suit 100  
Wichita Kansas 67206

**Sonja Phillips 1-22**

Job Ticket: 19256

**DST#: 5**

ATTN: Ryan Greenbaum

Test Start: 2014.02.09 @ 11:39:00

## Mud and Cushion Information

Mud Type: Gel Chem  
Mud Weight: 9.00 lb/gal  
Viscosity: 45.00 sec/qt  
Water Loss: 7.98 in<sup>3</sup>  
Resistivity: ohm.m  
Salinity: 5100.00 ppm  
Filter Cake: 1.00 inches

Cushion Type:  
Cushion Length: ft  
Cushion Volume: bbl  
Gas Cushion Type:  
Gas Cushion Pressure: psig

Oil API: deg API  
Water Salinity: ppm

## Recovery Information

Recovery Table

Length ft	Description	Volume bbl
81.00	Mud cut oil Oil 90% Mud 10%	1.136
111.00	Oil cut mud	1.557
0.00	Oil 30% Mud 60% Water 10%	0.000

Total Length: 192.00 ft      Total Volume: 2.693 bbl

Num Fluid Samples: 0

Num Gas Bombs: 0

Serial #:

Laboratory Name:

Laboratory Location:

Recovery Comments:

