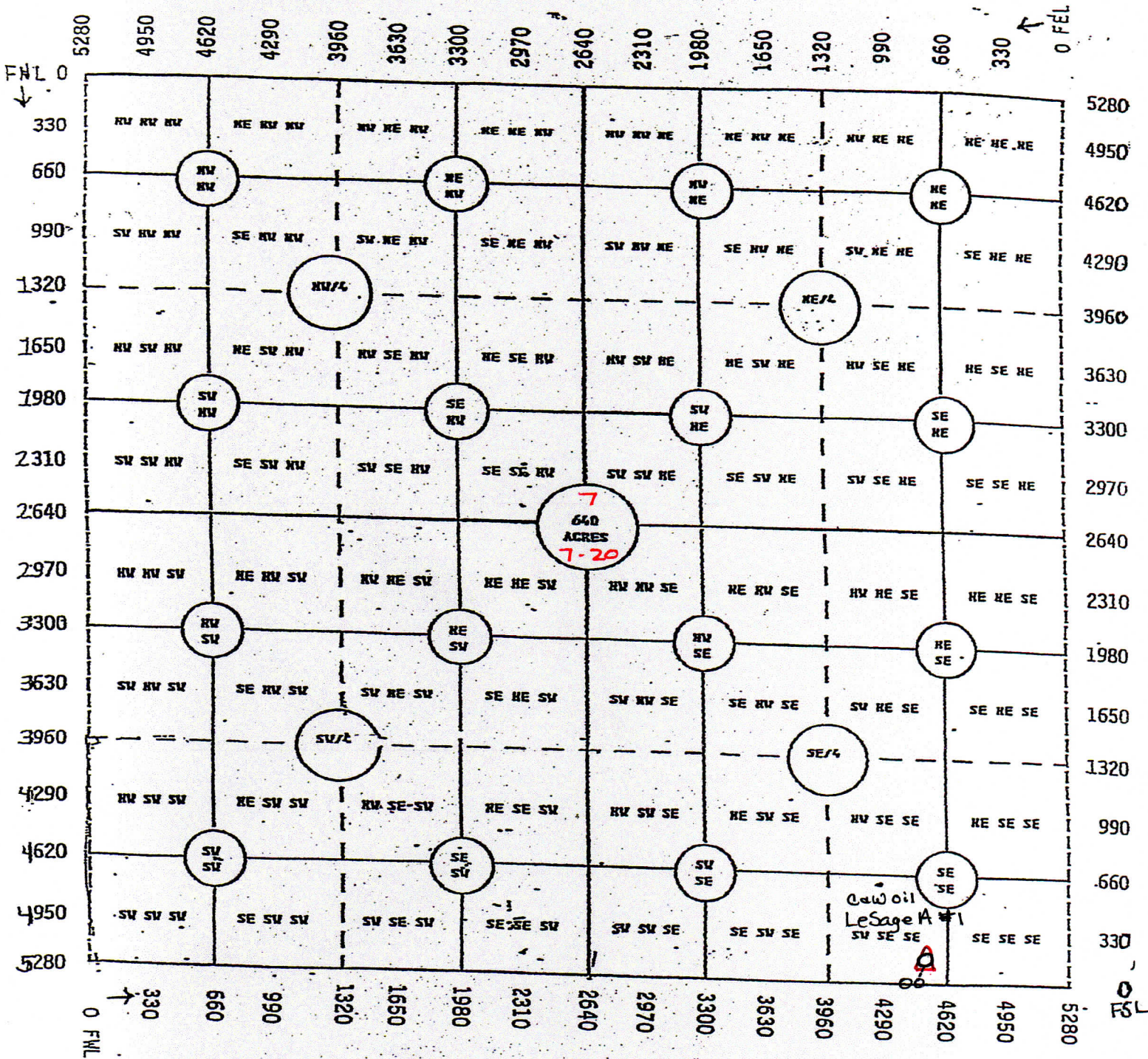


C&W Oil LLC

LeSage A Lease SE/4 of S 7-T7S-R20W
Rooks County, Kansas



LeSage A #1 - if production pipe is set, our intentions are to set a Tank Battery if production is high, if production is low, we plan to lay new leadline to existing Tank Battery on LeSage Lease (NE/4 of S18-T7S-R20W), as Interest owners are the same.