



**TRILOBITE
TESTING, INC**

DRILL STEM TEST REPORT

Great Plains Energy, Inc.

25-2s-24w Norton, KS

6121 S 58th St. STE B
Lincoln, NE 68516

Braun #1-25

Job Ticket: 53370

DST#: 1

ATTN: Rich Bell

Test Start: 2013.09.02 @ 18:35:00

GENERAL INFORMATION:

Formation: **LKC "C"**

Deviated: No Whipstock: ft (KB)

Time Tool Opened: 20:47:00

Time Test Ended: 02:57:00

Test Type: Conventional Bottom Hole (Initial)

Tester: Kevin Mack

Unit No: 66

Interval: **3452.00 ft (KB) To 3478.00 ft (KB) (TVD)**

Total Depth: 3478.00 ft (KB) (TVD)

Hole Diameter: 7.88 inches Hole Condition: Good

Reference Elevations: 2423.00 ft (KB)

2421.00 ft (CF)

KB to GR/CF: 2.00 ft

Serial #: 8653 Outside

Press@RunDepth: psig @ 3453.00 ft (KB)

Capacity: 8000.00 psig

Start Date: 2013.09.02 End Date: 2013.09.03

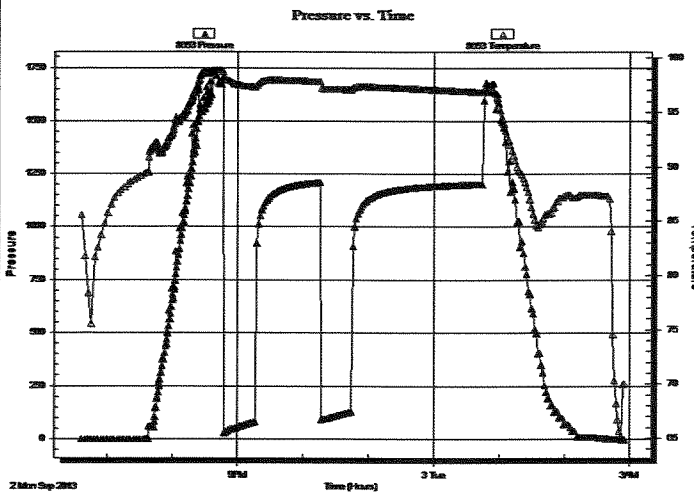
Last Calib.: 2013.09.03

Start Time: 18:36:00 End Time: 02:55:30

Time On Btm:

Time Off Btm:

TEST COMMENT: 30 - IF- BoB in 9 min.
60 - IS- Weak Surface Return started at 1 min. Built to 5"
30 - FF- BoB in 13 in
120 - FS- Return Blow Started at 1 min. Built to 8"



PRESSURE SUMMARY

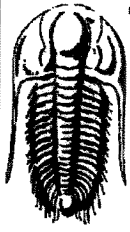
Time (Min.)	Pressure (psig)	Temp (deg F)	Annotation

Recovery

Length (ft)	Description	Volume (bbl)
60.00	GMCO 10G 10M 80o	0.30
60.00	GMCO 10G 5M 85o	0.30
248.00	Clean Gassy Oil 20G 80o	3.44
0.00	624' GIP	0.00

Gas Rates

Choke (inches)	Pressure (psig)	Gas Rate (Mcf/d)



**TRILOBITE
TESTING, INC.**

DRILL STEM TEST REPORT

Great Plains Energy, Inc.

25-2s-24w Norton, KS

6121 S 58th St. STE B
Lincoln, NE 68516

Braun #1-25

Job Ticket: 53371

DST#: 2

ATTN: Rich Bell

Test Start: 2013.09.03 @ 16:30:00

GENERAL INFORMATION:

Formation: LKC "J"

Deviated: No Whipstock: ft (KB)

Time Tool Opened: 18:27:10

Time Test Ended: 23:00:30

Test Type: Conventional Bottom Hole (Initial)

Tester: Kevin Mack

Unit No: 66

Interval: 3552.00 ft (KB) To 3583.00 ft (KB) (TVD)

Total Depth: 3583.00 ft (KB) (TVD)

Hole Diameter: 7.88 inches Hole Condition: Good

Reference Elevations: 2423.00 ft (KB)

2421.00 ft (CF)

KB to GR/CF: 2.00 ft

Serial #: 8874

Inside

Press@RunDepth: 44.80 psig @ 3553.00 ft (KB)

Start Date: 2013.09.03

End Date:

2013.09.03

Capacity: 8000.00 psig

Last Calib.: 2013.09.03

Start Time: 16:31:00

End Time:

23:00:30

Time On Btm: 2013.09.03 @ 18:27:00

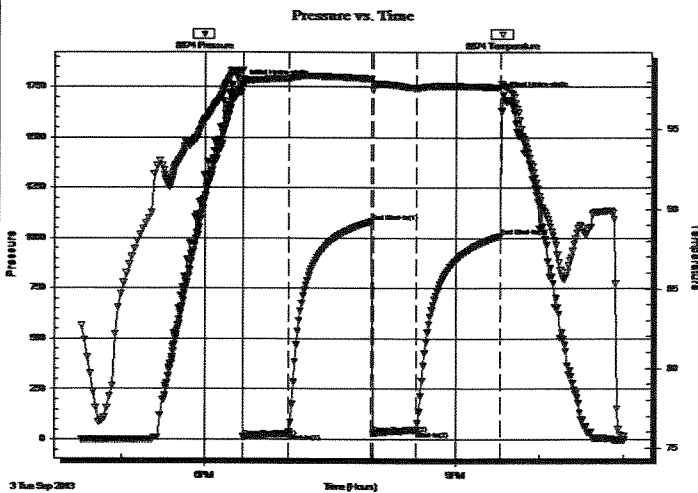
Time Off Btm: 2013.09.03 @ 21:33:30

TEST COMMENT: 30 - IF- Surface Blow built to 1/4"

60 - IS- No Return

30 - FF- No Blow

60 - FS- No Return



PRESSURE SUMMARY

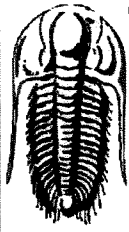
Time (Min.)	Pressure (psig)	Temp (deg F)	Annotation
0	1765.58	98.68	Initial Hydro-static
1	12.27	97.94	Open To Flow (1)
33	28.31	98.16	Shut-In(1)
93	1082.00	98.15	End Shut-In(1)
94	29.46	97.47	Open To Flow (2)
125	44.80	97.55	Shut-In(2)
185	1009.86	97.60	End Shut-In(2)
187	1706.88	97.72	Final Hydro-static

Recovery

Length (ft)	Description	Volume (bbl)
60.00	Mud 100M	0.30

Gas Rates

Choke (inches)	Pressure (psig)	Gas Rate (Mcf/d)



**TRILOBITE
TESTING, INC.**

DRILL STEM TEST REPORT

Great Plains Energy, Inc.

25-2s-24w Norton, KS

6121 S 58th St. STE B
Lincoln, NE 68516

Braun #1-25

Job Ticket: 53372

DST#: 3

ATTN: Rich Bell

Test Start: 2013.09.04 @ 18:05:00

GENERAL INFORMATION:

Formation: **Bsl Penn Sand**

Deviated: No Whipstock: ft (KB)

Time Tool Opened: 19:42:20

Time Test Ended: 01:52:00

Test Type: Conventional Bottom Hole (Initial)

Tester: Kevin Mack

Unit No: 66

Interval: **3666.00 ft (KB) To 3744.00 ft (KB) (TVD)**

Reference Elevations: 2423.00 ft (KB)

Total Depth: 3744.00 ft (KB) (TVD)

2421.00 ft (CF)

Hole Diameter: 7.88 inches Hole Condition: Good

KB to GR/CF: 2.00 ft

Serial #: 8653 Outside

Press@RunDepth: psig @ 3667.00 ft (KB)

Capacity: 8000.00 psig

Start Date: 2013.09.04

End Date:

2013.09.05

Last Calib.:

2013.09.05

Start Time: 18:06:00

End Time:

01:50:30

Time On Btm:

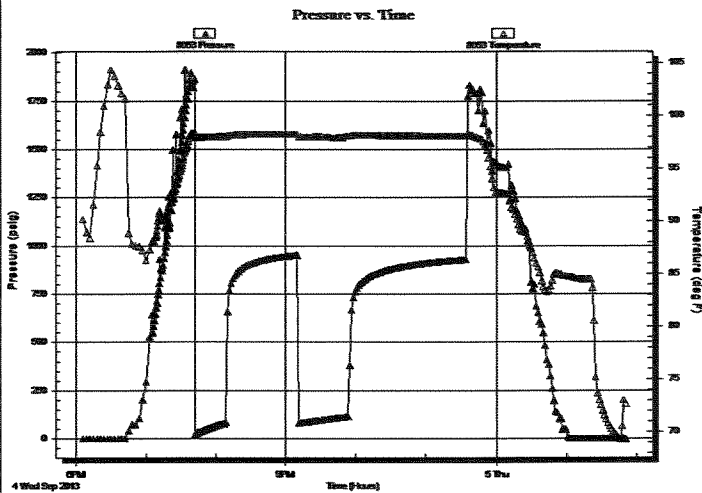
Time Off Btm:

TEST COMMENT: 30 - IF- 1/4" Blow built to 5"

60 - IS- No Return

45 - FF- Surface Blow started at 13 min. Built to 4 1/2"

90 - FS- No Return



PRESSURE SUMMARY

Time (Min.)	Pressure (psig)	Temp (deg F)	Annotation
-------------	-----------------	--------------	------------

Recovery

Length (ft)	Description	Volume (bbl)
5.00	Heavy Mud 100M	0.02
115.00	MW 90W 10M	0.57
82.00	MW 85W 15M	1.11

Gas Rates

Choke (inches)	Pressure (psig)	Gas Rate (Mcf/d)
----------------	-----------------	------------------