

REVISION: 03/07/2014

LOCATION: 35-T13S-R29W GOVE COUNTY, KANSAS

WELL No: #1-35

REV.

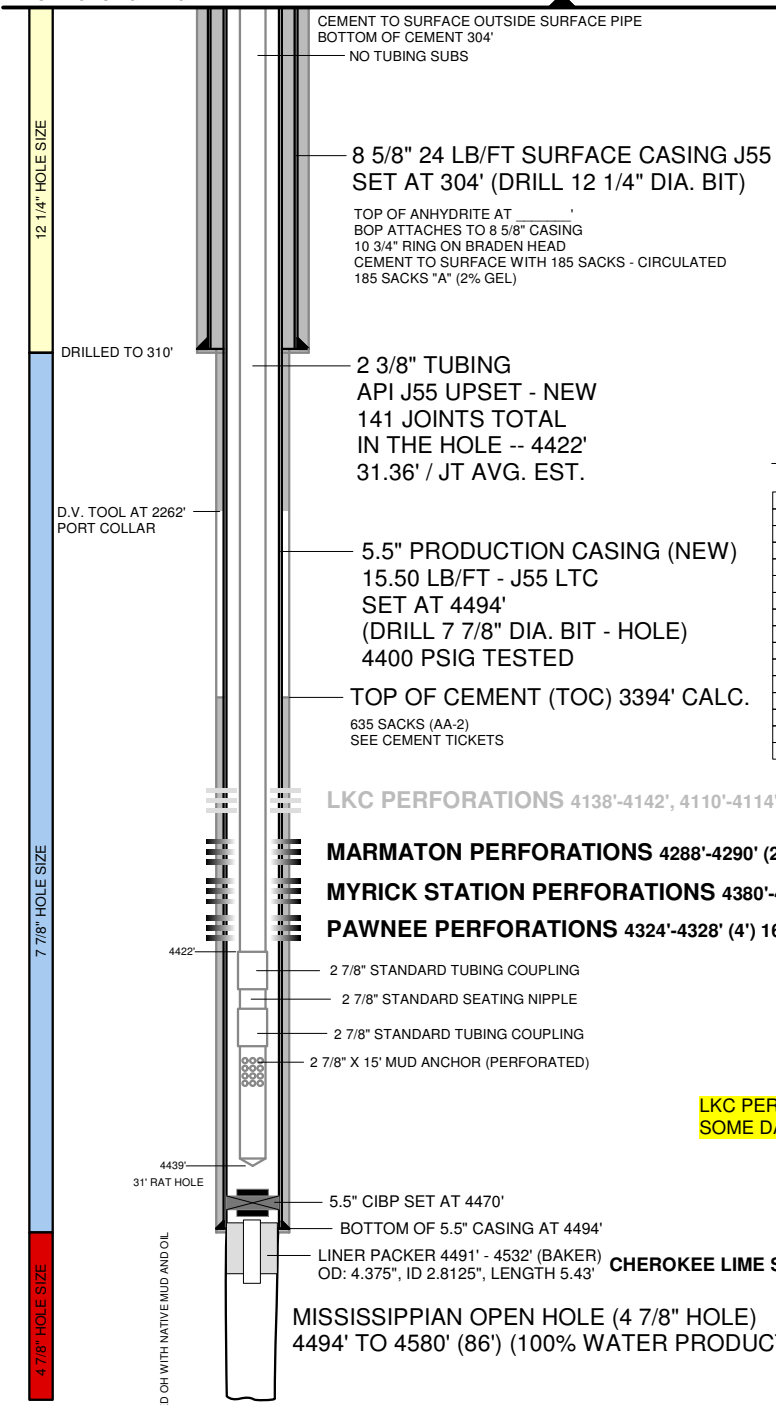
SURFACE TEMP: 60 DEG F

K.B.: 11'

G.L. ELEVATION 2784' (SHL)

SET TOP CLPG 12" AGL

5 1/2" X 2 3/8" TUBING HEAD



NOTES:

PUMPING UNIT: C - 114 - 140 - 54 (54" SURFACE STROKE)
 CONVENTIONAL LUFKIN UNIT
 20 HP ELECTRIC MOTOR WITH 40 HP SPOCC VFD
 VFD INSTALLED
 RUN TIME: 24 HRS PER DAY
 1.25" X 14' POLISHED ROD WITH LINER ASSEMBLY
 1.50" HARD FACED POLISHED ROD LINER X 8'
 4' PONY RODS ON TOP (7/8" GRADE D NEW)
 39 7/8" GRADE D SUCKER RODS ON TOP (NEW)
 134 3/4" GRADE D SUCKER RODS ON BOTTOM (NEW)
 4' X 3/4" PONY ROD ON BOTTOM (ON TOP OF INSERT PUMP)
 SPEED RANGE: 4 TO 16 SPM
 MAX. SPEED: 16 SPM
 CURRENT SPEED: 8 SPM (WAS AT 10 SPM)
 NO TUBING ANCHOR INSTALLED

TUBULARS

PURPOSE SIZE	CONDUCTOR 13 3/8"	SURFACE 8 5/8"	INTERMEDIATE	PRODUCTION 5 1/2"	PROD. TUBING 2 3/8"
WEIGHT	NONE	2,946 PSIG	NONE	15.5 LB/FT	4.6 LB/FT
GRADE	NONE	J-55	NONE	J-55	J-55
BURST	NONE	24.0 LB/FT	NONE	4,812 PSIG	5,600 PSIG
COLLAPSE	NONE	381,395 LBF	NONE	4,043 PSIG	5,888 PSIG
YIELD	NONE	1,434 PSIG	NONE	248,274 LBF	52,169 LBF
CAPACITY	NONE	0.064 BBL/FT	NONE	0.024 BBL/FT	0.004 BBL/FT
THICKNESS	NONE	0.2640"	NONE	0.2750"	0.1900"
ID	NONE	8.0970"	NONE	4.9500"	1.9950"
DRIFT ID	NONE	7.9720"	NONE	4.8250"	1.901"
AREA	NONE	51.49 IN2	NONE	19.42 IN2	1.304 IN2
SETTING DEPTH	NONE	304'	NONE	4,494'	4,442'
LENGTH	NONE	304'	NONE	4,494'	NEED 4,422'
FOB					CHASE, KS
COST					

LKC PERFORATIONS 4138'-4142', 4110'-4114', 4080'-4084', 4062'-4066' (SQUEEZED OFF)

MARMATON PERFORATIONS 4288'-4290' (2') 8 HOLES

MYRICK STATION PERFORATIONS 4380'-4384' (4') 16 HOLES

PAWNEE PERFORATIONS 4324'-4328' (4') 16 HOLES

GUN OWEN 4000-317
 0.450" DIA.
 36.0" PEN.

DATE	03/06/2014
APPROVED BY	B. KELSO
AFE	TBD
API No.	15063219760001
GL ELEVATION	2784'
KB	11'
KB ELEVATION	2795'
RIG	WORX

LKC PERFORATIONS 4110'-4114' NEEDS TO BE OPENED BACK UP SOME DAY: 25 TO 35% OIL WITH 100 BPD OF TOTAL FLUID

MISSISSIPPIAN OPEN HOLE (4 7/8" HOLE)
 4494' TO 4580' (86') (100% WATER PRODUCTION)

PBTD: 4580' MD TVD
 RTD: 4580' MD TVD
 LTD: 4580' MD TVD

DOWNHOLE TEMP: 130 DEG F (EST.)

DOWN HOLE SUCKER ROD PUMP:

1.5000" INSERT PUMP
 PUMP LENGTH: 14' (NICARD AND SS)
 BOTTOM HOLD DOWN TYPE
 TRAVELING BARREL
 2' X 3/4" PONY ROD ON TOP OF PUMP
 8' GAS SEPERATOR ON THE BOTTOM
 PUMP INTAKE DEPTH: 4432'
 PUMP IS SETTING BELOW PERFORATIONS

BRIGGS #1-35
 GOVE COUNTY, KANSAS
 35-T13S-R29W
 SHL: 460 FSL, 1980 FWL
 BHL: 460 FSL, 1980 FWL
 HOFFSMITH FIELD

LKC: 600 BPD - TRACE OF OIL
 LKC: 400 BPD - TRACE OF OIL
 LKC: 100 BPD - 25 TO 35% OIL
 LKC: 2000 BPD -- 100% WATER
 MARMATON: 27 BPD - 100% OIL
 MYRICK STATION: 27 BPD - 100% OIL
 PAWNEE: 5 BPD - TRACE OF OIL

