



TRILOBITE TESTING, INC.

DRILL STEM TEST REPORT

McElvain Energy, Inc.

9-6s-37w Sherman Co KS

1050 17th STE 2500
Denver CO 80265

Goetsch 9-16

Job Ticket: 54709

DST#: 1

ATTN: Larry Nicholson

Test Start: 2013.12.03 @ 21:18:15

GENERAL INFORMATION:

Formation: **Marmaton**

Deviated: No Whipstock: ft (KB)

Time Tool Opened: 01:21:45

Time Test Ended: 07:01:30

Test Type: Conventional Bottom Hole (Initial)

Tester: Mike Roberts

Unit No: 65

Interval: 4582.00 ft (KB) To 4630.00 ft (KB) (TVD)

Reference Elevations: 3432.00 ft (KB)

Total Depth: 4630.00 ft (KB) (TVD)

3421.00 ft (CF)

Hole Diameter: 7.88 inches Hole Condition: Fair

KB to GR/CF: 11.00 ft

Serial #: 8846

Inside

Press@RunDepth: 52.50 psig @ 4583.00 ft (KB)

Capacity: 8000.00 psig

Start Date: 2013.12.03

End Date:

2013.12.04

Last Calib.:

2013.12.04

Start Time:

21:18:15

End Time:

07:01:30

Time On Btm:

2013.12.04 @ 01:21:30

Time Off Btm:

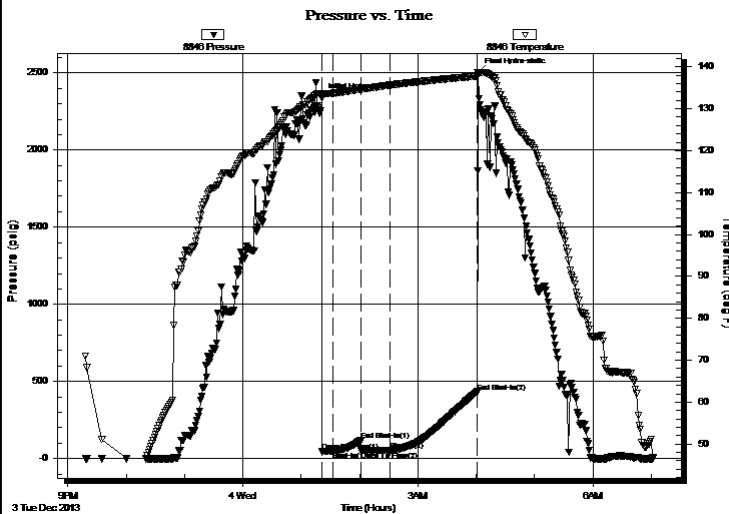
2013.12.04 @ 04:01:45

TEST COMMENT: IF:Weak surface blow died in 4 min.

IS:No return blow

FF:No blow

FS:No return blow



PRESSURE SUMMARY

Time (Min.)	Pressure (psig)	Temp (deg F)	Annotation
0	2338.96	133.62	Initial Hydro-static
1	46.12	132.75	Open To Flow (1)
11	48.67	133.68	Shut-In(1)
40	119.79	134.66	End Shut-In(1)
41	49.43	134.65	Open To Flow (2)
70	52.50	135.61	Shut-In(2)
160	433.47	137.78	End Shut-In(2)
161	2503.55	138.53	Final Hydro-static

Recovery

Length (ft)	Description	Volume (bbl)
10.00	mud (thick mud)	0.05

Gas Rates

	Choke (inches)	Pressure (psig)	Gas Rate (Mcf/d)



**TRILOBITE
TESTING, INC**

DRILL STEM TEST REPORT

FLUID SUMMARY

McElvain Energy, Inc.

9-6s-37w Sherman Co KS

1050 17th STE 2500
Denver CO 80265

Goetsch 9-16

Job Ticket: 54709

DST#: 1

ATTN: Larry Nicholson

Test Start: 2013.12.03 @ 21:18:15

Mud and Cushion Information

Mud Type: Gel Chem

Cushion Type:

Oil API:

0 deg API

Mud Weight: 9.00 lb/gal

Cushion Length:

ft

Water Salinity:

0 ppm

Viscosity: 49.00 sec/qt

Cushion Volume:

bbf

Water Loss: 7.19 in³

Gas Cushion Type:

Resistivity: 0.00 ohm.m

Gas Cushion Pressure:

psig

Salinity: 2000.00 ppm

Filter Cake: 1.00 inches

Recovery Information

Recovery Table

Length ft	Description	Volume bbf
10.00	mud (thick mud)	0.049

Total Length: 10.00 ft Total Volume: 0.049 bbf

Num Fluid Samples: 0

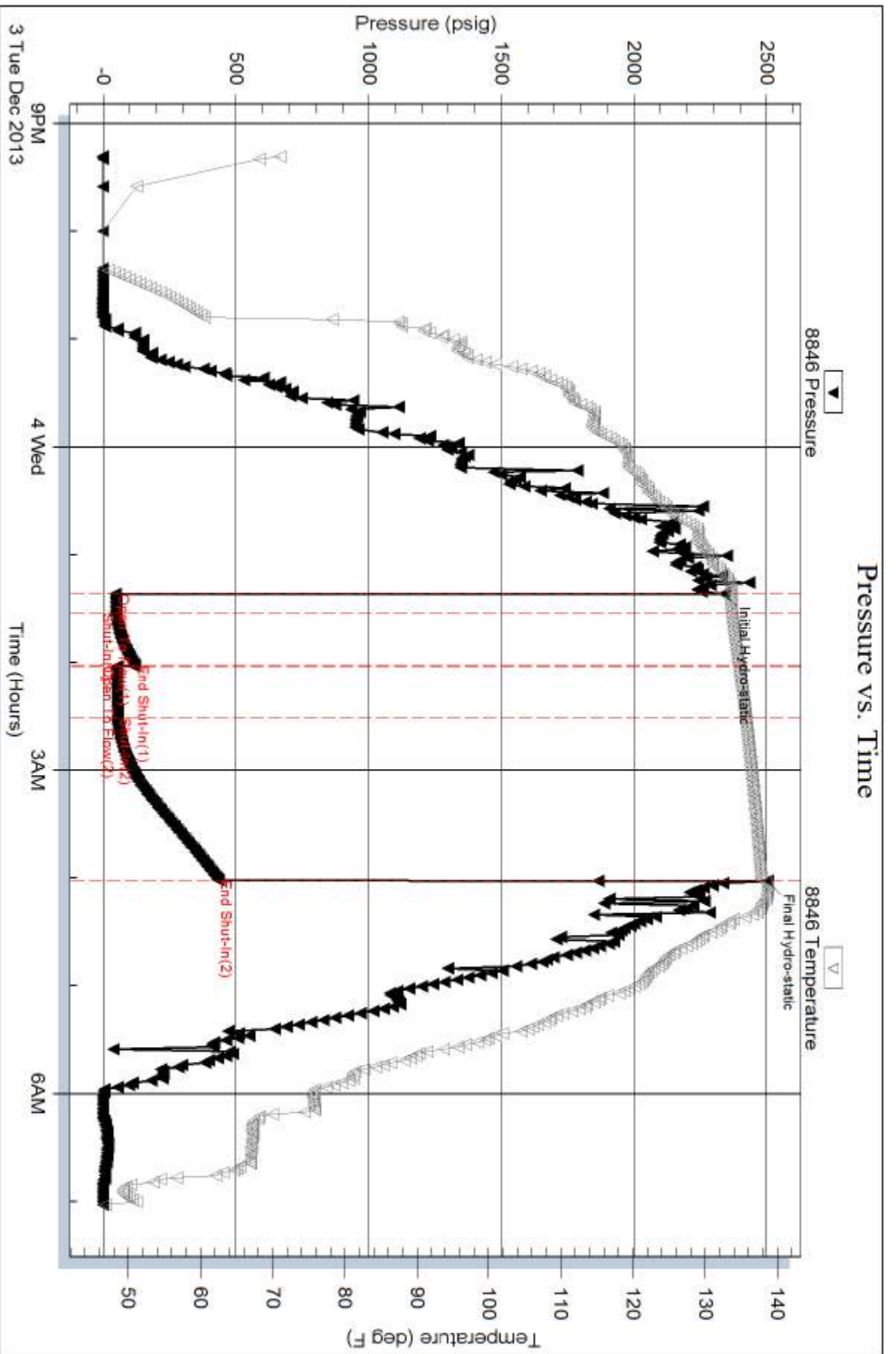
Num Gas Bombs: 0

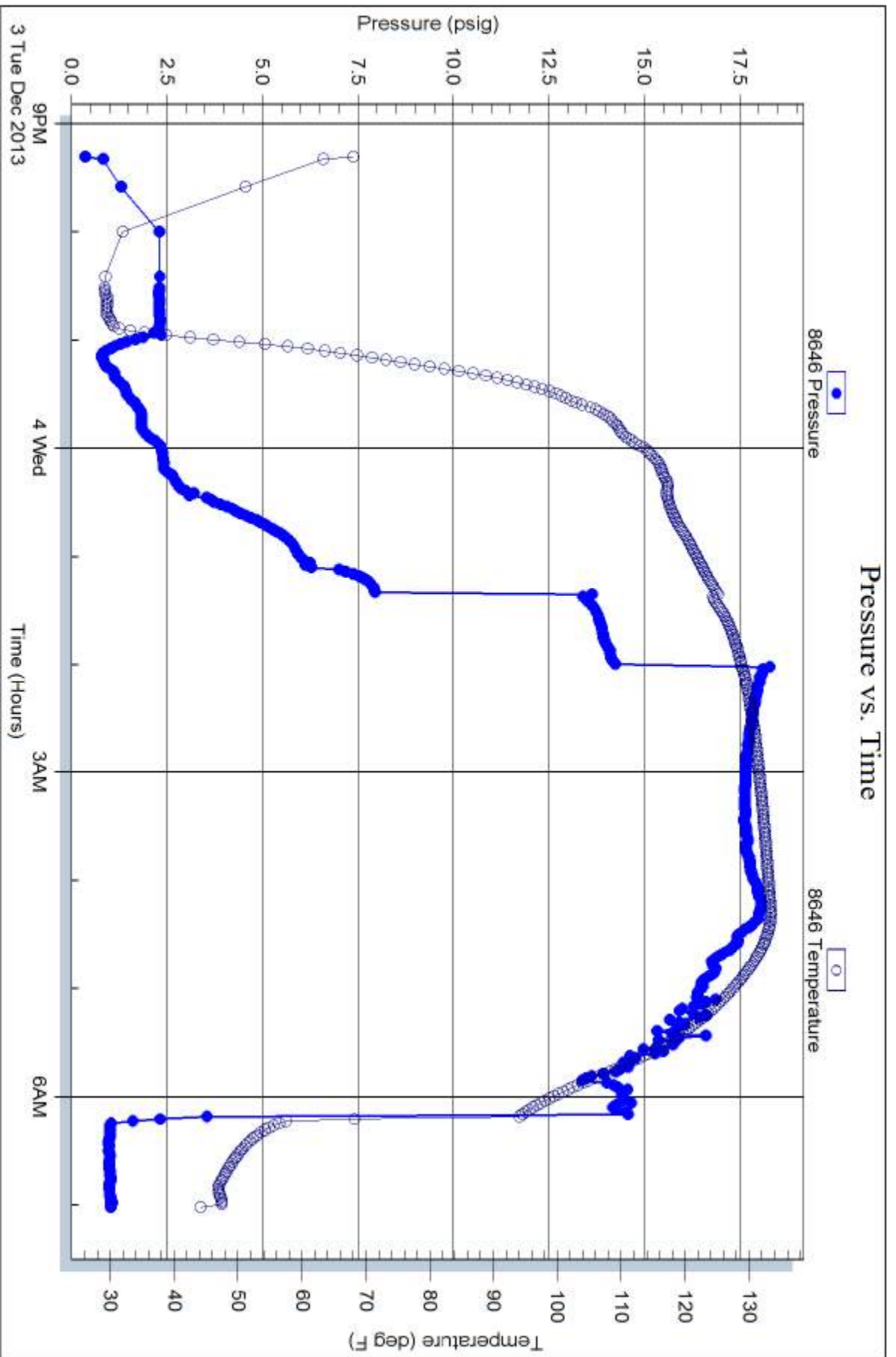
Serial #:

Laboratory Name:

Laboratory Location:

Recovery Comments:







**TRILOBITE
TESTING, INC.**

DRILL STEM TEST REPORT

McElvain Energy, Inc.

9-6s-37w Sherman,KS

1050 17th STE 2500
Denver CO 80265

Goetsch 9-16

Job Ticket: 54545

DST#: 2

ATTN: Larry Nicholson

Test Start: 2013.12.05 @ 00:20:00

GENERAL INFORMATION:

Formation: **Pawnee-Ft. Scott**

Deviated: No Whipstock: ft (KB)

Time Tool Opened: 04:10:00

Time Test Ended: 10:42:45

Test Type: Conventional Bottom Hole (Reset)

Tester: Cornelio Landa III (

Unit No: 65

Interval: 4643.00 ft (KB) To 4703.00 ft (KB) (TVD)

Reference Elevations: 3432.00 ft (KB)

Total Depth: 4703.00 ft (KB) (TVD)

3421.00 ft (CF)

Hole Diameter: 7.88 inches Hole Condition: Fair

KB to GR/CF: 11.00 ft

Serial #: 8846

Inside

Press @ Run Depth: 54.05 psig @ 4645.00 ft (KB)

Capacity: 8000.00 psig

Start Date: 2013.12.05

End Date:

2013.12.05

Last Calib.:

2013.12.05

Start Time:

00:20:15

End Time:

10:42:45

Time On Btm:

2013.12.05 @ 04:09:30

Time Off Btm:

2013.12.05 @ 07:25:30

TEST COMMENT:

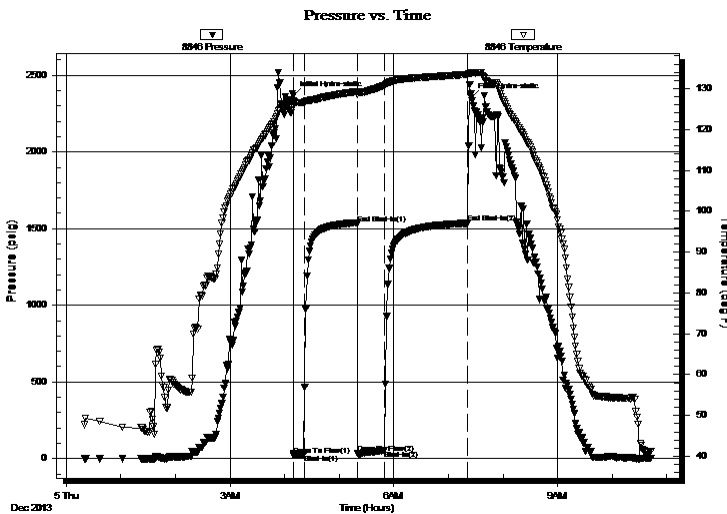
IF: 1 1/2 in. of Blow

IS: Bled off in 1 1/2 min.-surface blow back after 6 min. shut in-died in 5 min.

FF: 1 14 in. of Blow

FS: Bled off in 1 min.-No Blow back

PRESSURE SUMMARY



Time (Min.)	Pressure (psig)	Temp (deg F)	Annotation
0	2366.32	127.08	Initial Hydro-static
1	19.53	126.61	Open To Flow (1)
12	28.46	126.62	Shut-In(1)
71	1533.37	129.29	End Shut-In(1)
71	34.91	128.53	Open To Flow (2)
101	54.05	130.78	Shut-In(2)
192	1535.11	133.47	End Shut-In(2)
196	2353.04	133.84	Final Hydro-static

Recovery

Length (ft)	Description	Volume (bbl)
70.00	Mud 100m	0.34

* Recovery from multiple tests

Gas Rates

Choke (inches)	Pressure (psig)	Gas Rate (Mcf/d)



**TRILOBITE
TESTING, INC.**

DRILL STEM TEST REPORT

FLUID SUMMARY

McElvain Energy, Inc.

9-6s-37w Sherman,KS

1050 17th STE 2500
Denver CO 80265

Goetsch 9-16

Job Ticket: 54545

DST#: 2

ATTN: Larry Nicholson

Test Start: 2013.12.05 @ 00:20:00

Mud and Cushion Information

Mud Type: Gel Chem

Cushion Type:

Oil API:

deg API

Mud Weight: 9.00 lb/gal

Cushion Length:

ft

Water Salinity:

ppm

Viscosity: 62.00 sec/qt

Cushion Volume:

bbbl

Water Loss: 6.40 in³

Gas Cushion Type:

Resistivity: 0.00 ohm.m

Gas Cushion Pressure:

psig

Salinity: 2500.00 ppm

Filter Cake: 1.00 inches

Recovery Information

Recovery Table

Length ft	Description	Volume bbl
70.00	Mud 100m	0.344

Total Length: 70.00 ft Total Volume: 0.344 bbl

Num Fluid Samples: 0

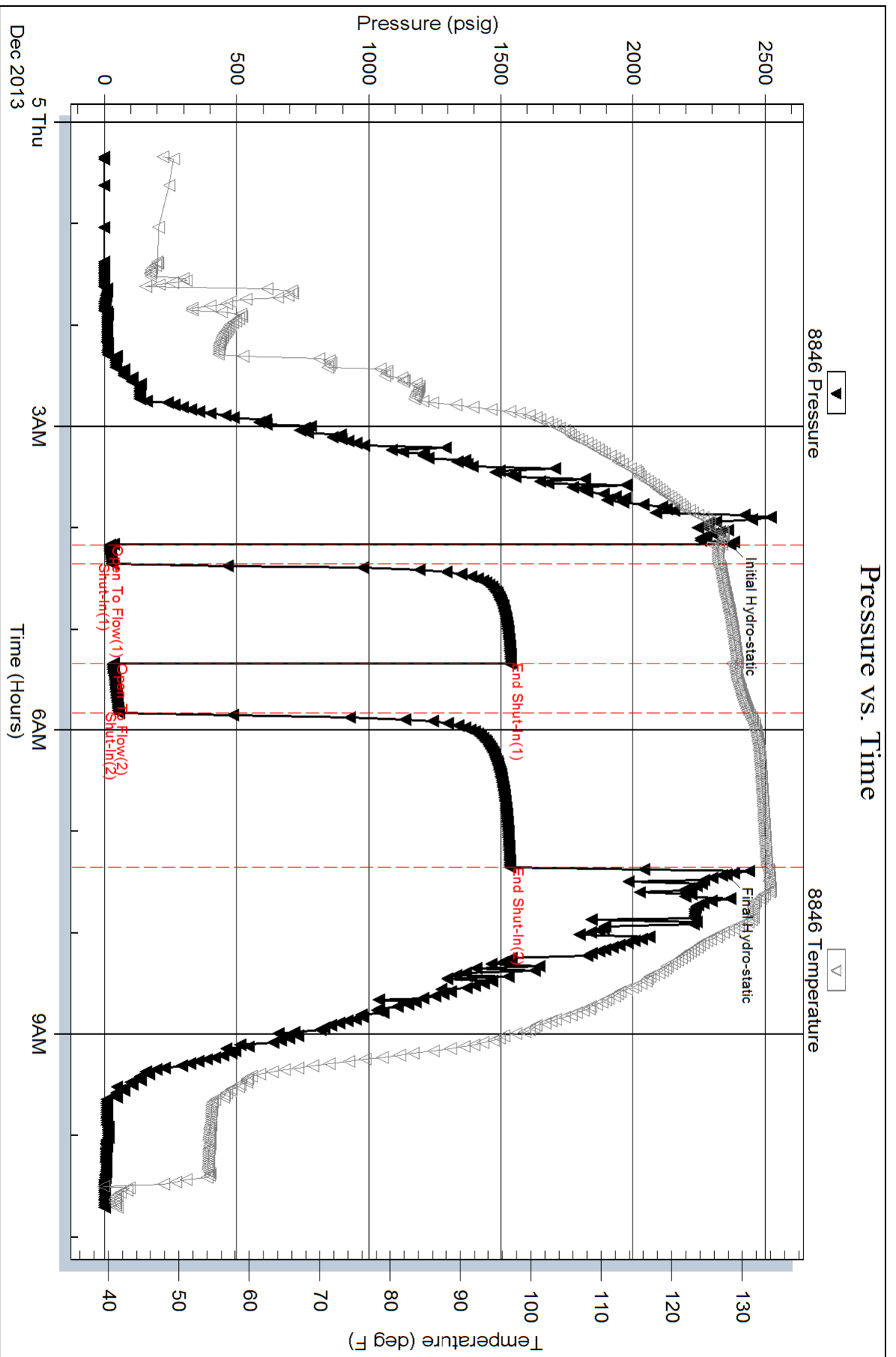
Num Gas Bombs: 0

Serial #:

Laboratory Name:

Laboratory Location:

Recovery Comments:



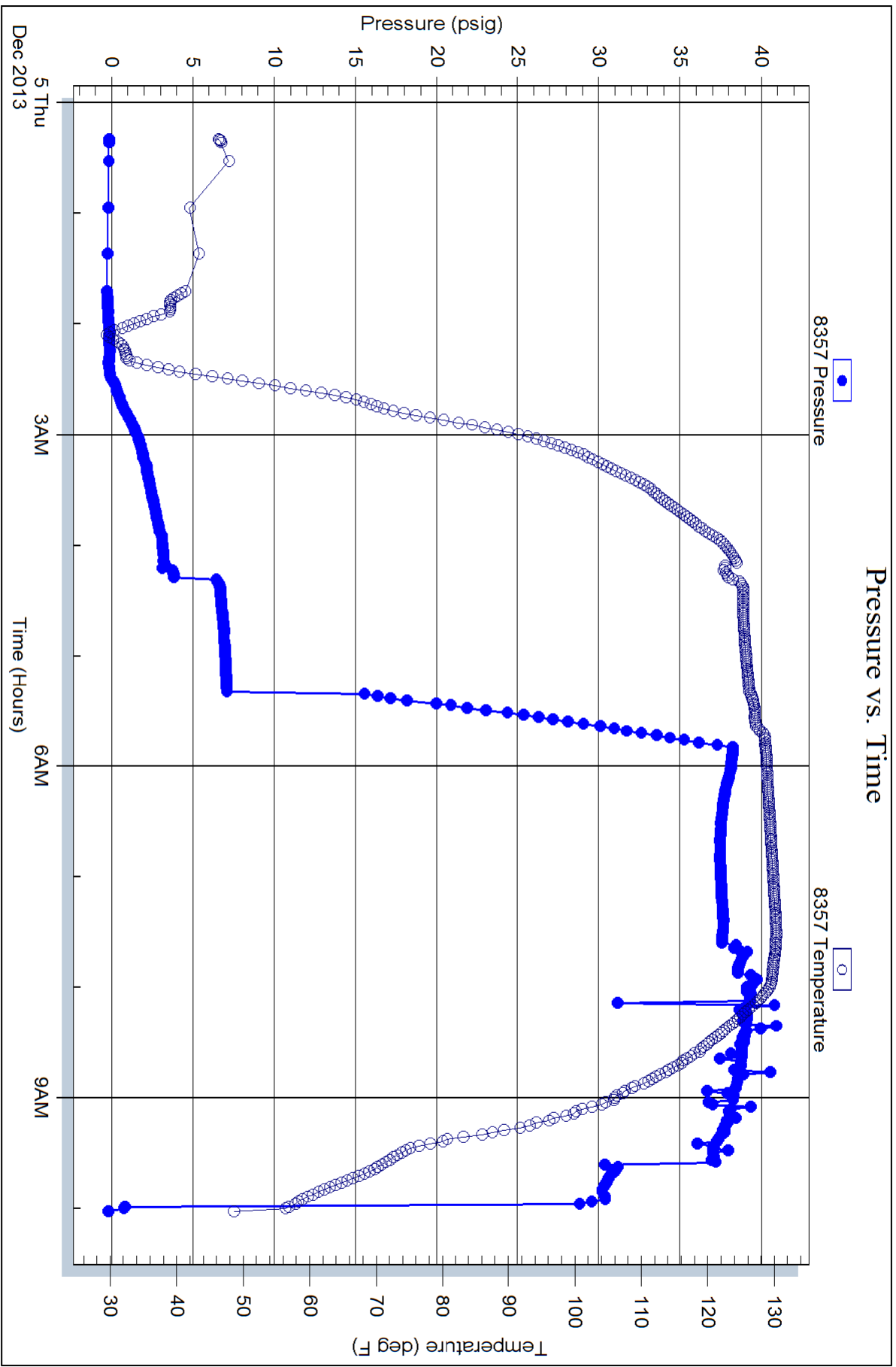
Serial #: 8357

Fluid

McElvain Energy, Inc.

Goetsch 9-16

DST Test Number: 2



Trilobite Testing, Inc

Ref. No: 54545

Printed: 2013.12.05 @ 11:50:52