

T31S, R1E, 6th P.M.

Source Energy MidCon, LLC

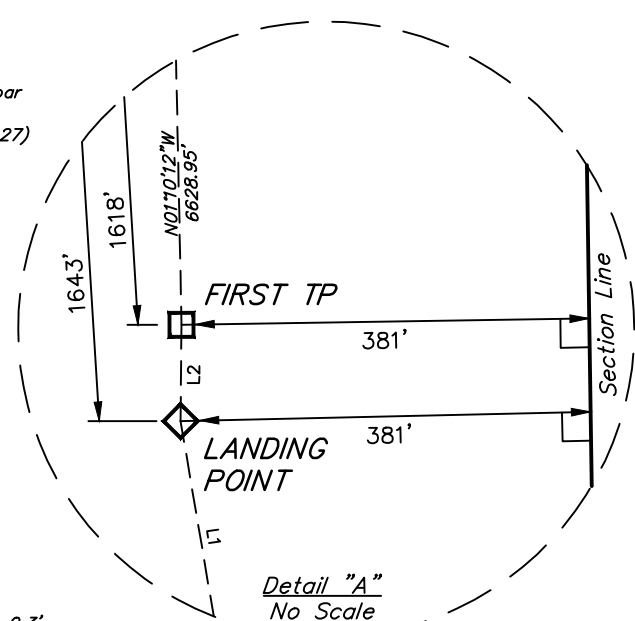
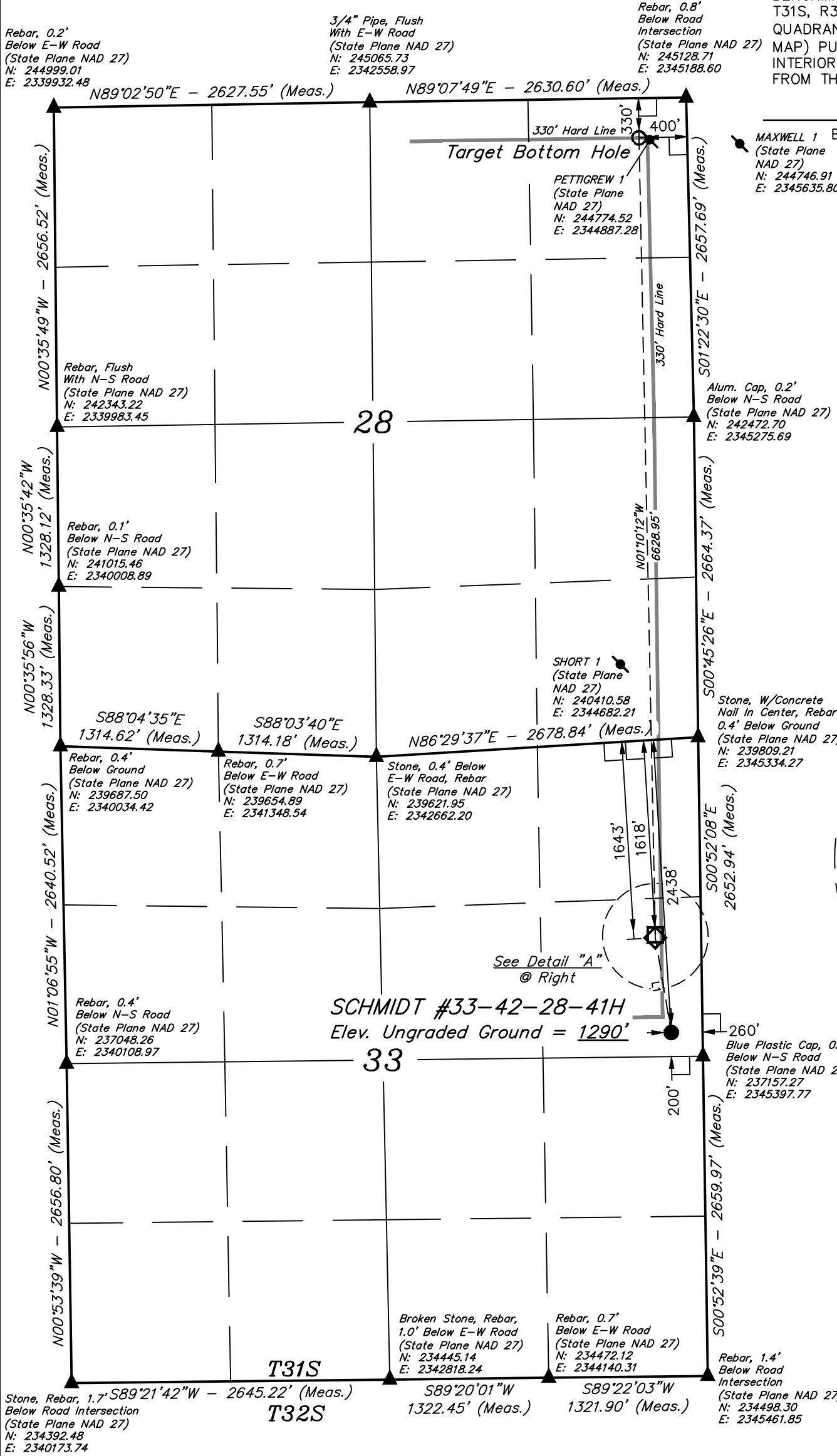
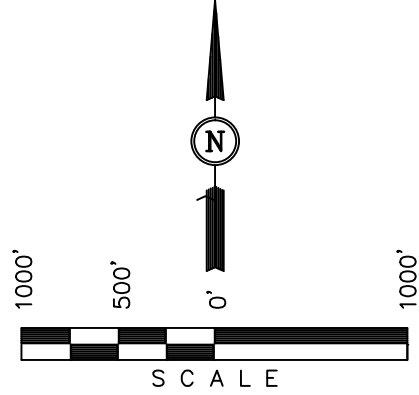
Well location, SCHMIDT #33-42-28-41H, located as shown in the SE 1/4 NE 1/4 of Section 33, T31S, R1E, 6th P.M., Sumner County, Kansas.

BASIS OF ELEVATION

BENCHMARK (1356) LOCATED IN THE NE 1/4 SECTION 4, T31S, R3W, 6th. P.M., TAKEN FROM THE CONWAY SPRINGS QUADRANGLE, KANSAS, 7.5 MINUTE QUAD. (TOPOGRAPHIC MAP) PUBLISHED BY THE UNITED STATES DEPARTMENT OF THE INTERIOR, GEOLOGICAL SURVEY. SAID ELEVATION OBTAINED FROM THE NGS DATA SHEET NAVD 88 IS 1356.58 FEET.

BASIS OF BEARINGS

MAXWELL 1 BASIS OF BEARINGS IS A G.P.S. OBSERVATION.



LINE TABLE		
LINE	DIRECTION	LENGTH
L1	N09°35'02"W	799.43'
L2	N00°30'07"E	25.00'

- LEGEND:**
- └─┘ = 90° SYMBOL
 - = PROPOSED WELL HEAD.
 - ▲ = SECTION CORNERS LOCATED.

NAD 83 (SURFACE LOCATION) LATITUDE = 37°18'45.05" (37.312514) LONGITUDE = 97°18'48.97" (97.313603)	NAD 83 (LANDING POINT) LATITUDE = 37°18'52.85" (37.314681) LONGITUDE = 97°18'50.58" (97.314050)	NAD 83 (TARGET BOTTOM HOLE) LATITUDE = 37°19'58.62" (37.332950) LONGITUDE = 97°18'51.93" (97.314425)
NAD 27 (SURFACE LOCATION) LATITUDE = 37°18'44.97" (37.312492) LONGITUDE = 97°18'47.81" (97.313281)	NAD 27 (LANDING POINT) LATITUDE = 37°18'52.77" (37.314658) LONGITUDE = 97°18'49.42" (97.313728)	NAD 27 (TARGET BOTTOM HOLE) LATITUDE = 37°19'58.54" (37.332928) LONGITUDE = 97°18'50.77" (97.314103)
STATE PLANE NAD 27 N: 237351.81 E: 2345133.05		
STATE PLANE NAD 27 N: 238163.81 E: 2344993.05		
STATE PLANE NAD 27 N: 244789.33 E: 2344799.55		

REVISOR: 03-04-14
REVISOR: 02-28-14

UINTAH ENGINEERING & LAND SURVEYING
85 SOUTH 200 EAST - VERNAL, UTAH 84078
(435) 789-1017

SCALE 1" = 1000'	DATE SURVEYED: 02-26-14	DATE DRAWN: 02-26-14
PARTY B.L. A.F. J.J.	REFERENCES G.L.O. PLAT	
WEATHER COLD	FILE Source Energy MidCon LLC	

CERTIFICATE

THIS IS TO CERTIFY THAT THE ABOVE PLAT WAS PREPARED FROM FIELD NOTES OF ACTUAL SURVEYS MADE BY ME OR UNDER MY SUPERVISION AND THAT THE SAME ARE TRUE AND CORRECT TO THE BEST OF MY KNOWLEDGE AND BELIEF.

Robert S. Jenkins
REGISTERED LAND SURVEYOR
REGISTRATION NO. 1451
STATE OF KANSAS
02-26-14