

Adam Eldani Geo-Log/Report

WellSight Systems

Scale 1:240 (5"=100') Imperial

Measured Depth Log

Well Name: #1 WIN 2C-3D

Location: SEC 2-TOWNSHIP 16S- RANGE 31W SCOTT COUNTY

License Number: API 15-171-21008

Region: KANSAS

Spud Date: 12/04/2013

Drilling Completed: 12/17/2013

Surface Coordinates: 1230' FSL & 40' FWL

Bottom Hole Deviation Surveys are detailed through out the Geo-Report.

Coordinates:

Ground Elevation (ft): 2867'

K.B. Elevation (ft): 2872'

Logged Interval (ft): 3400 To: 4678

Total Depth (ft): 4675'

Formation: Mississippian

Type of Drilling Fluid: Mud-Co Chemical

Printed by MUD.LOG from WellSight Systems 1-800-447-1534 www.WellSight.com

OPERATOR

Company: Ritchie Exploration Inc. (drilled by WW RIG #8)

Address: 8100 E. 22nd ST. N. #700

Wichita, KS, 67278-3188

GEOLOGIST

Name: Adam M.A. Eldani

Company: Ritchie Exploration Inc.

Address: 8100 E. 22nd ST. N. #700

Wichita, KS, 67278-3188

Tops & Drill Report

TOPS: DRILLING REPORT

Sample Tops:

Anhydrite: 2286'+586	Anhydrite: 2289'+583
B/Anhydrite: 2308'+564	B/Anhydrite: 2310'+562
Stotler: 3510'-638	Stotler: 3510'-638
Heebner: 3884'-1012	Heebner: 3888'-1016
Toronto: 3904'-1032	Toronto: 3906'-1034
Lansing: 3921'-1049	Lansing: 3927'-1055
Muncie Sh: 4094'-1222	Muncie Sh: 4097'-1225
Stark Sh: 4188'-1316	Stark Sh: 4191'-1319
Hush: 4228'-1356	Hush: 4231'-1359
BKC: 4280'-1408	BKC: 4278'-1406
Marmaton: 4305'-1433	Marmaton: 4306'-1434
Altamont: 4334'-1462	Altamont: 4317'-1445
Pawnee: 4392'-1520	Pawnee: 4395'-1523
Myrick: 4429'-1557	Myrick: 4432'-1560
Fort Scott: 4447'-1575	Fort Scott: 4450'-1578
Cherokee Sh: 4470'-1598	Cherokee Sh: 4474'-1602
Johnson: 4512'-1640	Johnson: 4514'-1642
Miss: 4557'-1685	Miss: 4558'-1686
RTD: 4675'-1803	LTD: 4678'-1806

DAILY DRILLING REPORT: SUPERIOR TESTING, INC.

DATE DEPTH:

12/04	SPUD
12/05	435'
12/06	1162'
12/07	2195'
12/08	3080'
12/09	3645'
12/10	3942'
12/11	3964'
12/12	4025'
12/13	4031'
12/14	4145'
12/15	4184'
12/16	4294'
12/17	4675'

Operations

All DST's info. are NEAR the correct log depth.

RIG: WW RIG #8

TOOL PUSHER: SID DEUTSCHER

MUD: MUD CO. (Tyler Lang)

GAS DETECTOR: N/A

DRILL STEM TEST'S: SUPERIOR TESTING

LOGS: NABORS (IAN MABB)

OFFICE: PETER FIORINI

Comments

12/4/13:

Moved in and rigged up. Spud at 3:00 p.m. Ran 5 jts used 23# 8-5/8" surface casing. Tally at 223.44', set at 229'. Cemented with 165 sacks common, 2% gel, 3% cc. Cement did circulate. Plug down at 8:00 p.m. Drilled out plug at 4:00 a.m. on 12/5/13.

After the results of SAMPLE LOGGING, ELECTRIC LOGGING, AND ALL DST TESTS ANALYSIS & CALCULATIONS. IT WAS ELECTED TO PLUG and ABANDON THE #1 WIN 2C-3D.

Plug and Abandon. 1st plug set at 2310' with 50 sacks 60/40 Poz, 4% gel, 1/4# flocele; 2nd plug set at 1650' with 80 sacks; 3rd plug set at 800' with 50 sacks; 4th plug set at 260' with 40 sacks; 5th plug set at 60' with 20 sacks; 240 total sacks. Plugged the rat hole with 30 sacks. Job complete at 8:00 a.m. Plugging orders by Dan Sellers with the KCC.

Well Log Surveys BY: NABORS. Compensated Denisty/ Neutron Log, Dual Induction.

SAMPLES WILL BE DEPOSITED WITH KANSAS GEOLOGICAL SURVEY.

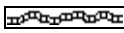
RESPECTFULLY SUBMITTED

Adam M. A. Eldani

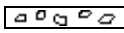
ROCK TYPES



Anhy



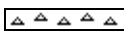
Bent



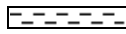
Brec



Carb sh



Cht



Clyst



Coal



Congl



Dol



Gyp



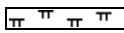
Igne



Lmst



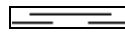
Meta



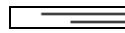
Mrlst



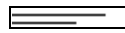
Salt



Shale



Shcol



Shgy



Sltst



Ss



Till

ACCESSORIES

MINERAL

- Anhy
- Arggrn
- Arg
- Bent
- Bit
- Breclfrag
- Calc
- Carb
- Chtdk
- Chtlt
- Dol
- Feldspar
- Ferrpel
- Ferr
- Glau
- Gyp

- Hvymin
- Kaol
- Marl
- Minxl
- Nodule
- Phos
- Pyr
- Salt
- Sandy
- Silt
- Sil
- Sulphur
- Tuff

FOSSIL

- Algae
- Amph

- Belm
- Bioclst
- Brach
- Bryozoa
- Cephal
- Coral
- Crin
- Echin
- Fish
- Foram
- Fossil
- Fuss
- Gastro
- Oolite
- Oomold
- Ostra
- Pelec

- Pellet
- Pisolite
- Plant
- Strom

STRINGER

- Anhy
- Arg
- Bent
- Coal
- Dol
- Gyp
- Ls
- Mrst
- Sltstrg
- Ssstrg

TEXTURE

- Boundst
- Chalky
- Cryxln
- Earthy
- Finexln
- Grainst
- Lithogr
- Microxln
- Mudst
- Packst
- Wackest

OTHER SYMBOLS

POROSITY

- Earthy
- Fenest
- Fracture
- Inter
- Moldic
- Organic
- Pinpoint

- Vuggy

SORTING

- Well
- Moderate
- Poor

ROUNDING

- Rounded
- Subrnd
- Subang
- Angular

- Even
- Spotted
- Ques
- Dead

- Dst_alt
- Dst

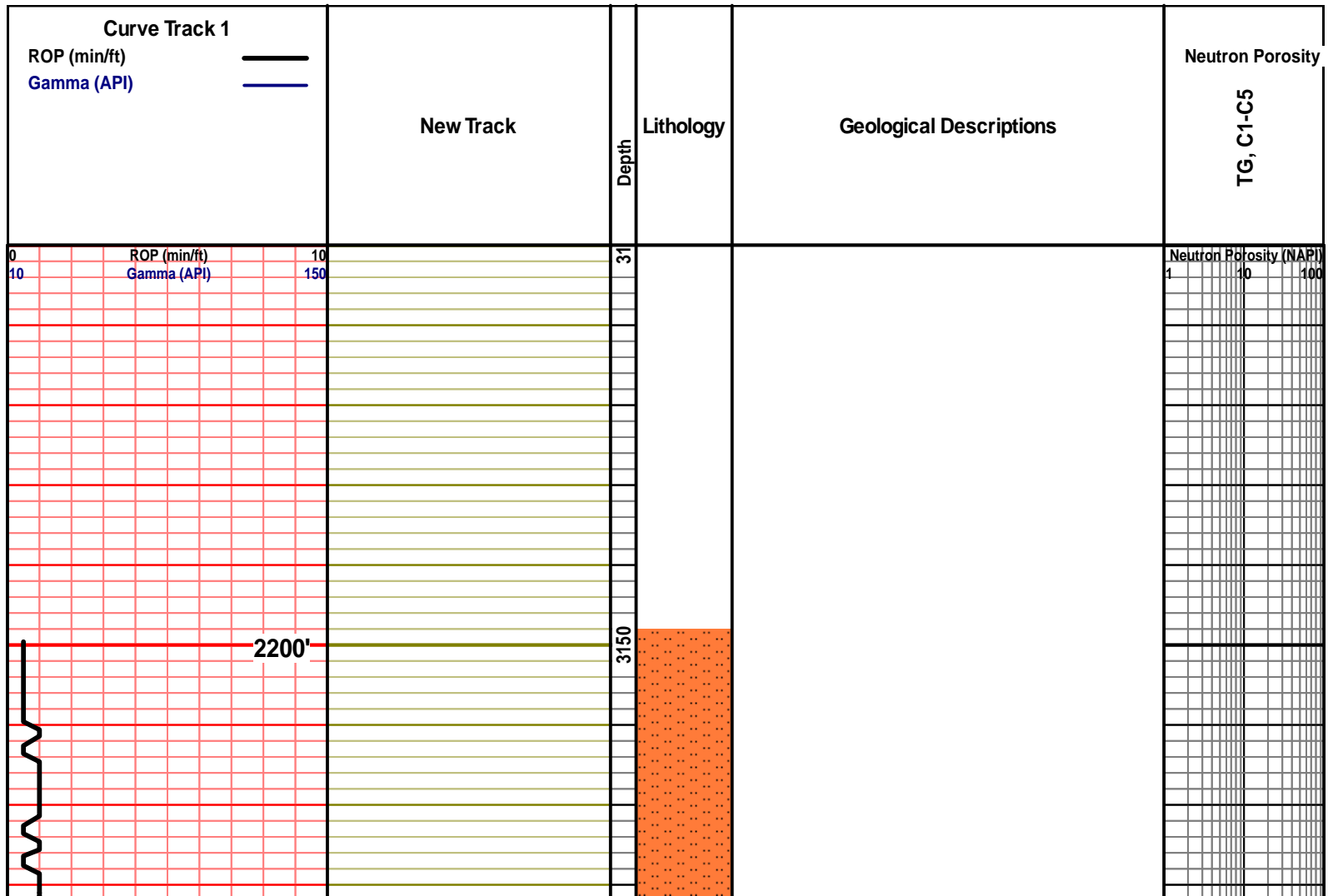
EVENT

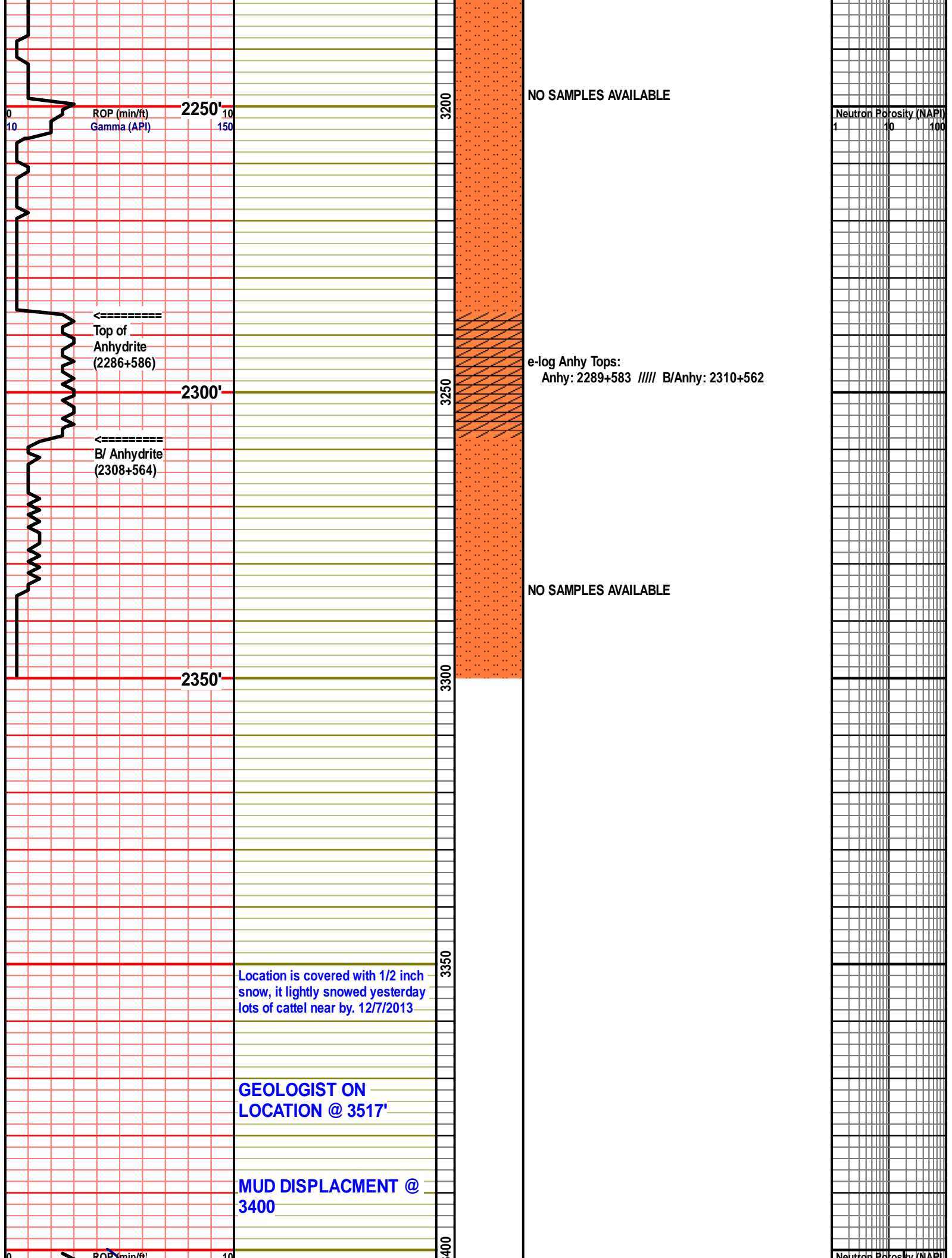
- Rft
- Sidewall

INTERVAL

- Core
- Dst

- OIL SHOW
- aimimg_1





ROP (min/ft)
Gamma (API)

2250'
10
150

3200

NO SAMPLES AVAILABLE

Neutron Porosity (NAPI)
1 10 100

←-----
Top of
Anhydrite
(2286+586)

2300'

3250

e-log Anhy Tops:
Anhy: 2289+583 // B/Anhy: 2310+562

←-----
B/ Anhydrite
(2308+564)

2350'

3300

NO SAMPLES AVAILABLE

Location is covered with 1/2 inch
snow, it lightly snowed yesterday
lots of cattel near by. 12/7/2013

3350

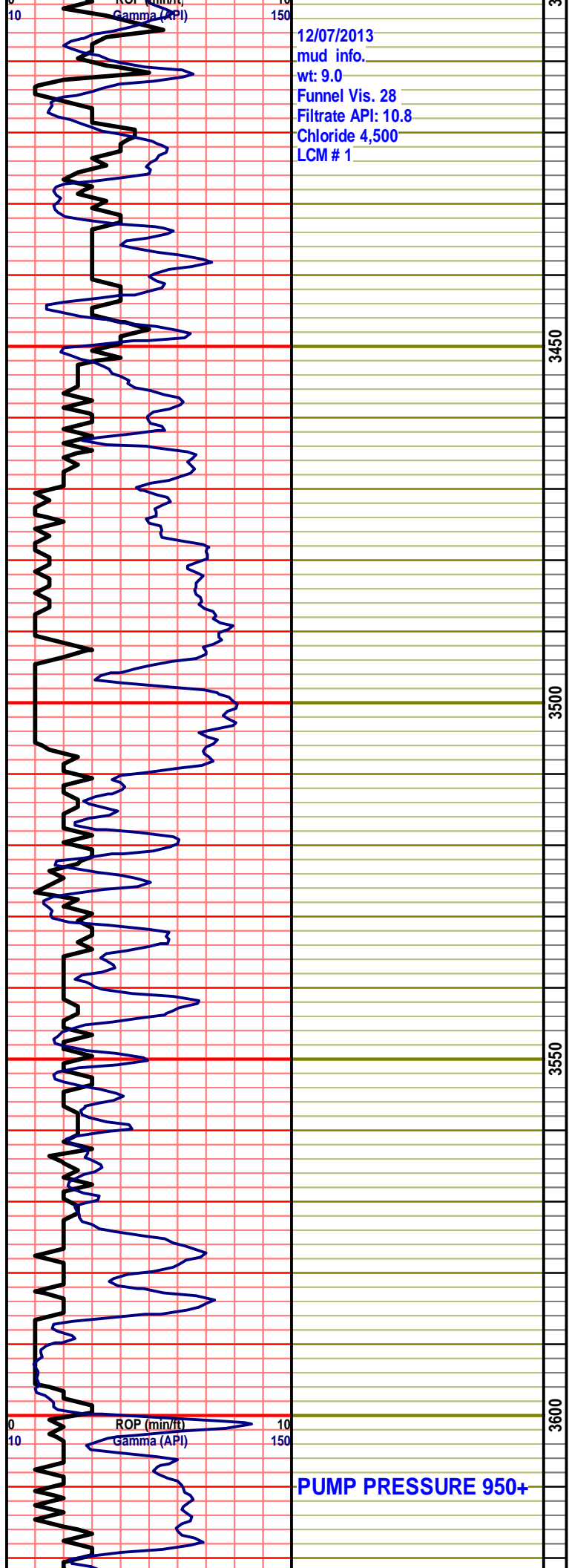
GEOLOGIST ON
LOCATION @ 3517'

MUD DISPLACMENT @
3400

4000

ROP (min/ft)

Neutron Porosity (NAPI)

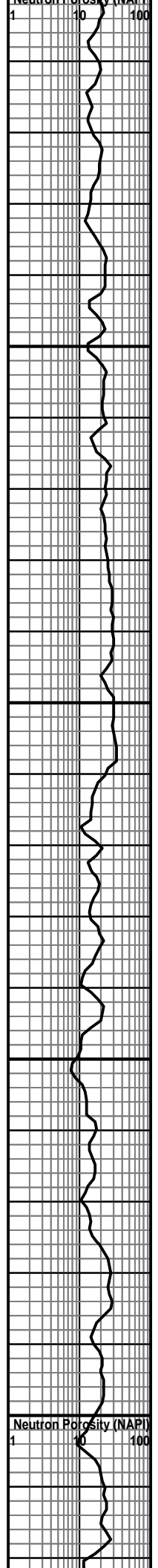


12/07/2013
mud info.
wt: 9.0
Funnel Vis: 28
Filtrate API: 10.8
Chloride 4,500
LCM # 1

NO SAMPLES AVAILABLE

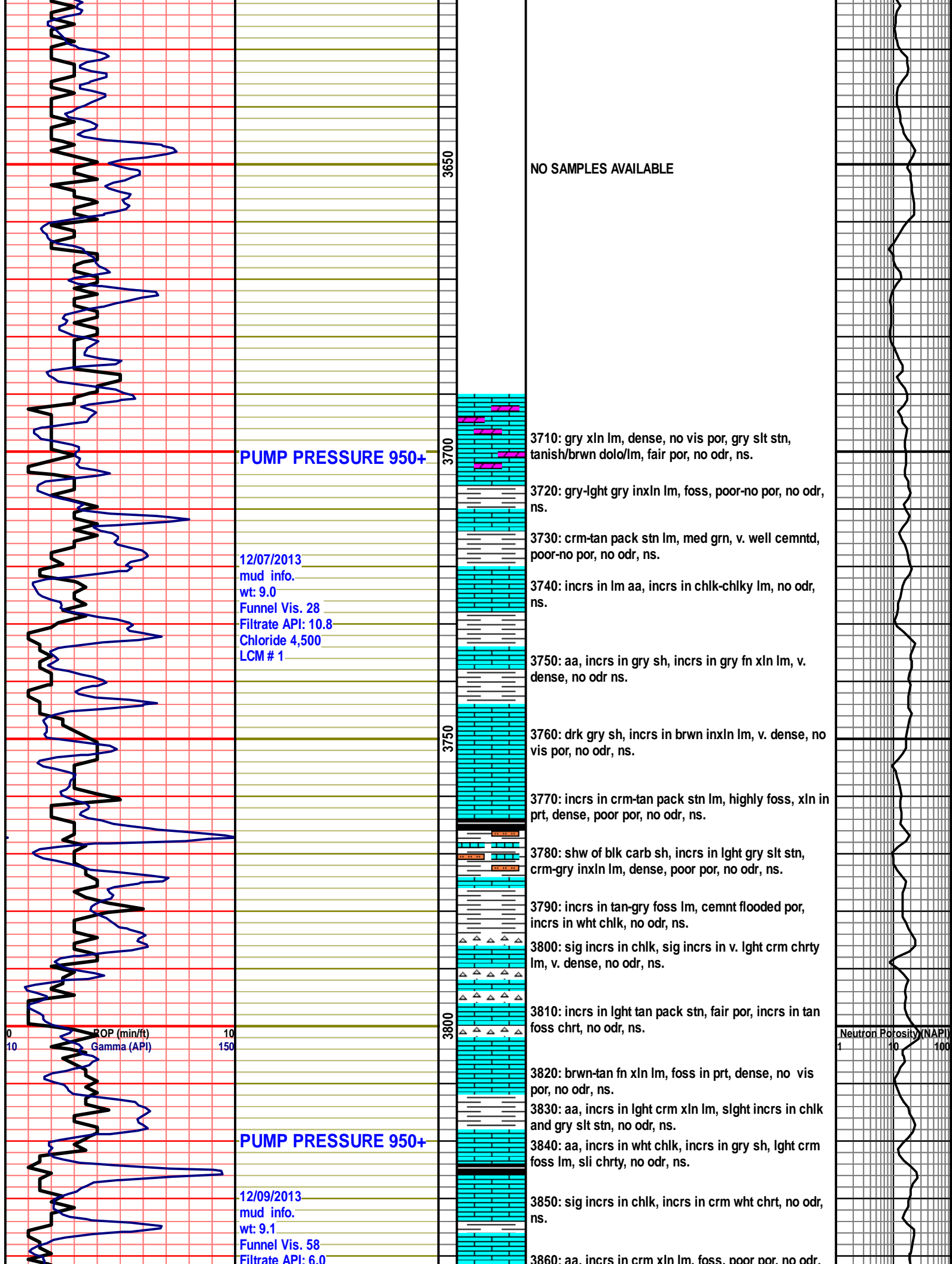
NO SAMPLES AVAILABLE

PUMP PRESSURE 950+



Neutron Porosity (NAPI)

1 10 100



NO SAMPLES AVAILABLE

PUMP PRESSURE 950+

12/07/2013
mud info.
wt: 9.0
Funnel Vis. 28
Filtrate API: 10.8
Chloride 4,500
LCM # 1

3710: gry xln lm, dense, no vis por, gry slt stn, tanish/brwn dolo/lm, fair por, no odr, ns.

3720: gry-lght gry inxln lm, foss, poor-no por, no odr, ns.

3730: crm-tan pack stn lm, med grn, v. well cemntd, poor-no por, no odr, ns.

3740: incrs in lm aa, incrs in chlk-chlky lm, no odr, ns.

3750: aa, incrs in gry sh, incrs in gry fn xln lm, v. dense, no odr ns.

3760: drk gry sh, incrs in brwn inxln lm, v. dense, no vis por, no odr, ns.

3770: incrs in crm-tan pack stn lm, highly foss, xln in prt, dense, poor por, no odr, ns.

3780: shw of blk carb sh, incrs in lght gry slt stn, crm-gry inxln lm, dense, poor por, no odr, ns.

3790: incrs in tan-gry foss lm, cemnt flooded por, incrs in wht chlk, no odr, ns.

3800: sig incrs in chlk, sig incrs in v. lght crm chrt, lm, v. dense, no odr, ns.

3810: incrs in lght tan pack stn, fair por, incrs in tan foss chrt, no odr, ns.

3820: brwn-tan fn xln lm, foss in prt, dense, no vis por, no odr, ns.

3830: aa, incrs in lght crm xln lm, slight incrs in chlk and gry slt stn, no odr, ns.

3840: aa, incrs in wht chlk, incrs in gry sh, lght crm foss lm, sli chrt, no odr, ns.

PUMP PRESSURE 950+

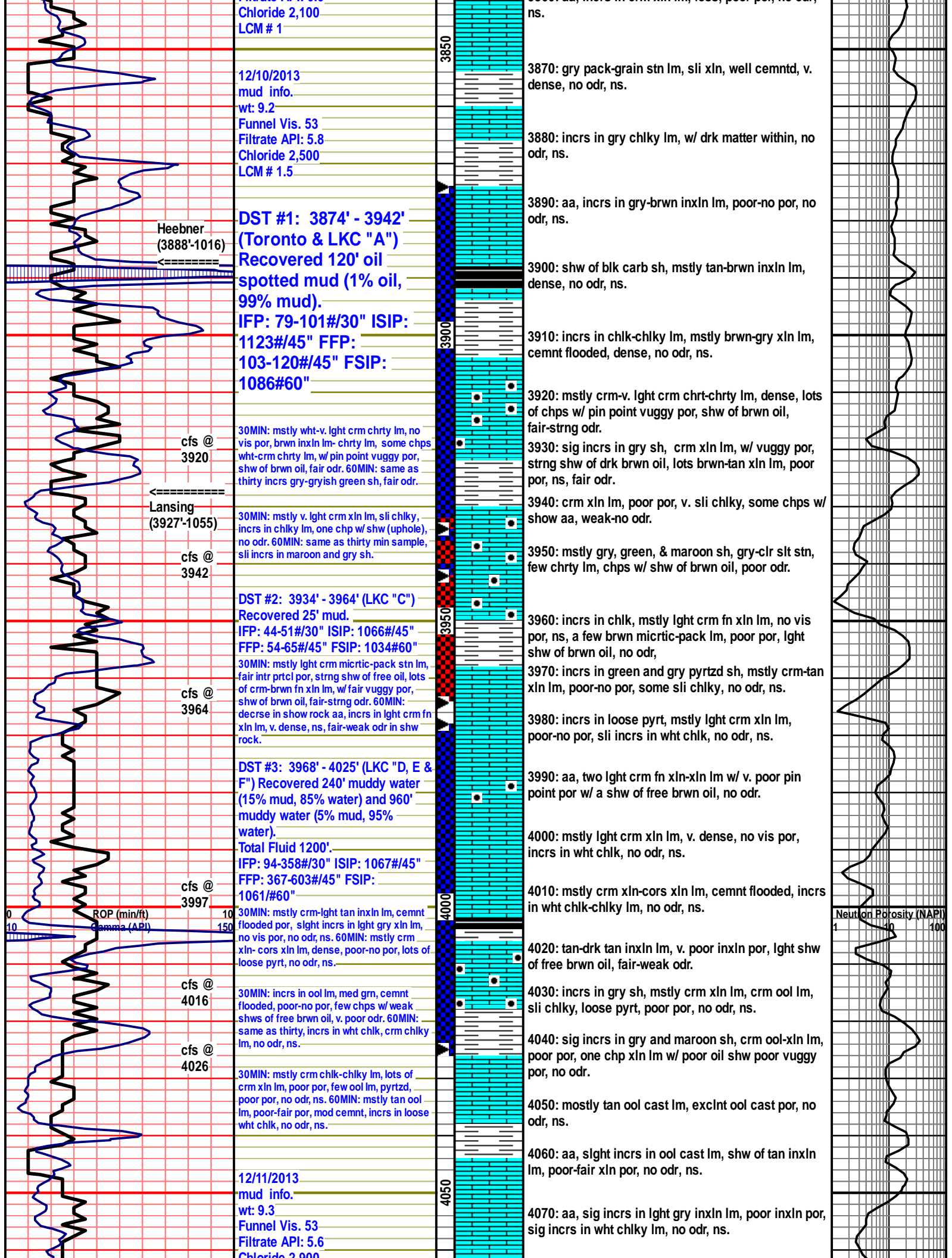
12/09/2013
mud info.
wt: 9.1
Funnel Vis. 58
Filtrate API: 6.0

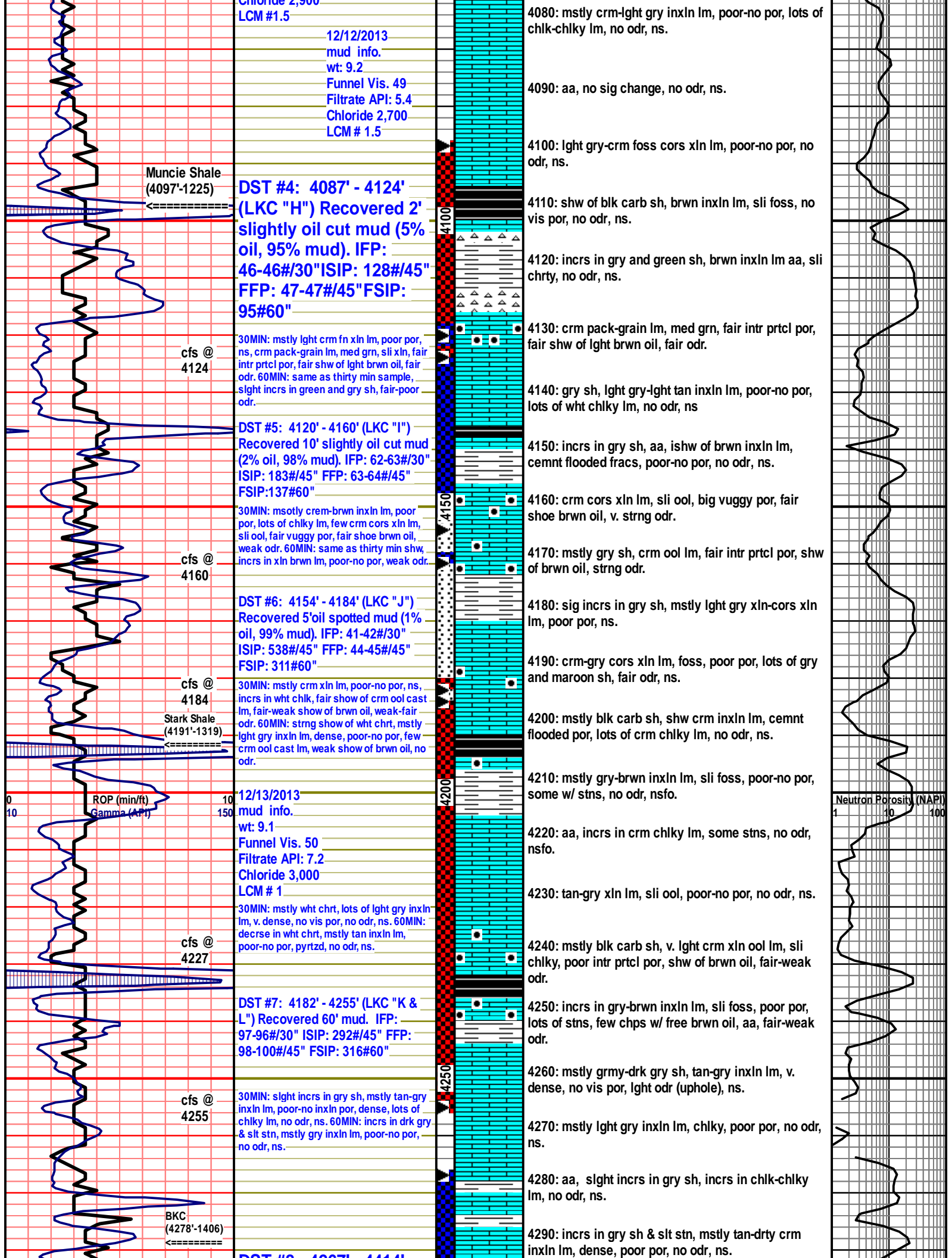
3850: sig incrs in chlk, incrs in crm wht chrt, no odr, ns.

3860: aa, incrs in crm xln lm, foss, poor por, no odr, ns.

ROP (min/ft)
Gamma (API)

Neutron Porosity (NAPI)





DST #8: 4267' - 4414'
(Marmaton, Altamont & Pawnee) Recovered 7' mud. IFP: 110-112#/30" ISIP: 448#/45" FFP: 114-115#/45" FSIP: 390#60"

Marmaton (4306'-1434)
 cfs @ 4314
 Altamont (4317'-1445)

30MIN: tan-lght brwn inxln lm, fn xln in prt, poor xln por, lght shw of brwn oil, v. weak odr. 60MIN: mstly tan chrt lm, dense, chrtly in prt, no odr, ns.

12/14/2013 mud info.
 wt: 9.2
 Funnel Vis. 54
 Filtrate API: 8.0
 Chloride 2,800
 LCM # 1

PUMP PRESSURE 900+

Pawnee (4395'-1523)
 ROP (min/ft)
 Gamma (API)

12/15/2013 mud info.
 wt: 9.2
 Funnel Vis. 46
 Filtrate API: 8.8
 Chloride 3,100
 LCM # 1

cfs @ 4414

30MIN: mstly tan foss chrt, tan inxln lm, dense, no vis por, lots of crm chlky lm, no odr, ns. 60MIN: same as thirty, incrs in chlky lm, no odr, ns.

cfs @ 4435

30MIN: lots of wht milky chrt, crm inxln lm, sli pyrtzd, some chlky, no odr, ns. 60MIN: mstly lght crm inxln lm, chlky, tan-gry xln lm, cemnt flooded, sli foss, poor-no por, no odr, ns.

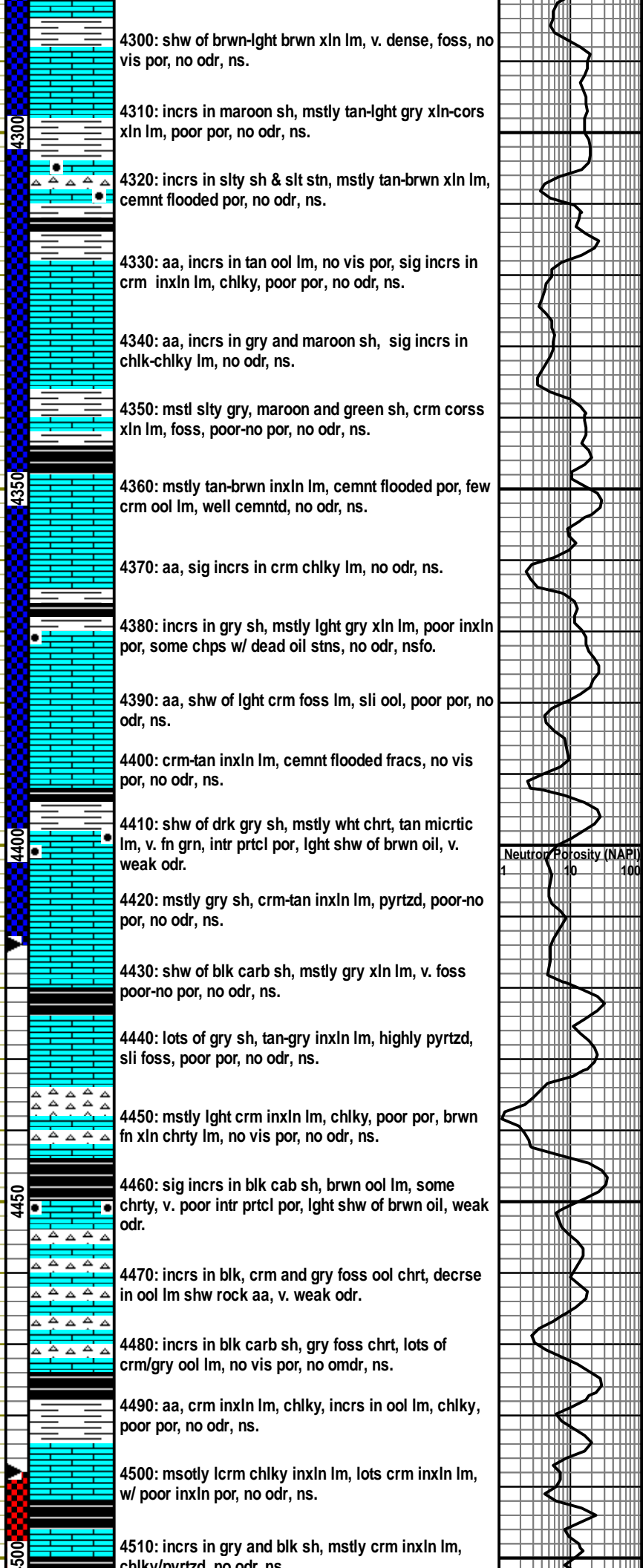
Fort Scott (4450'-1578)

cfs @ 4470

30MIN: mstly crm fn xln lm, no vis por, crm-tan inxln lm, chrtly, poor-no por, no odr, ns. 60MIN: lots of tan chrt, mstly crm-tan inxln lm, w/ chrt foss nod, no odr, ns.

Cherokee Shale (4474'-1602)

DST #9: 4488' - 4535'
(Johnson) Recovered 120' oil spotted mud (1% oil, 99% mud) and 20' oil spotted mud (2%



4300: shw of brwn-lght brwn xln lm, v. dense, foss, no vis por, no odr, ns.

4310: incrs in maroon sh, mstly tan-lght gry xln-cors xln lm, poor por, no odr, ns.

4320: incrs in slty sh & slt stn, mstly tan-brwn xln lm, cemnt flooded por, no odr, ns.

4330: aa, incrs in tan ool lm, no vis por, sig incrs in crm inxln lm, chlky, poor por, no odr, ns.

4340: aa, incrs in gry and maroon sh, sig incrs in chlky-chlky lm, no odr, ns.

4350: mstly slty gry, maroon and green sh, crm cors xln lm, foss, poor-no por, no odr, ns.

4360: mstly tan-brwn inxln lm, cemnt flooded por, few crm ool lm, well cemntd, no odr, ns.

4370: aa, sig incrs in crm chlky lm, no odr, ns.

4380: incrs in gry sh, mstly lght gry xln lm, poor inxln por, some chps w/ dead oil stns, no odr, nsfo.

4390: aa, shw of lght crm foss lm, sli ool, poor por, no odr, ns.

4400: crm-tan inxln lm, cemnt flooded fracs, no vis por, no odr, ns.

4410: shw of drk gry sh, mstly wht chrt, tan micrtic lm, v. fn grn, intr prtcl por, lght shw of brwn oil, v. weak odr.

4420: mstly gry sh, crm-tan inxln lm, pyrtzd, poor-no por, no odr, ns.

4430: shw of blk carb sh, mstly gry xln lm, v. foss poor-no por, no odr, ns.

4440: lots of gry sh, tan-gry inxln lm, highly pyrtzd, sli foss, poor por, no odr, ns.

4450: mstly lght crm inxln lm, chlky, poor por, brwn fn xln chrtly lm, no vis por, no odr, ns.

4460: sig incrs in blk cab sh, brwn ool lm, some chrtly, v. poor intr prtcl por, lght shw of brwn oil, weak odr.

4470: incrs in blk, crm and gry foss ool chrt, decrese in ool lm shw rock aa, v. weak odr.

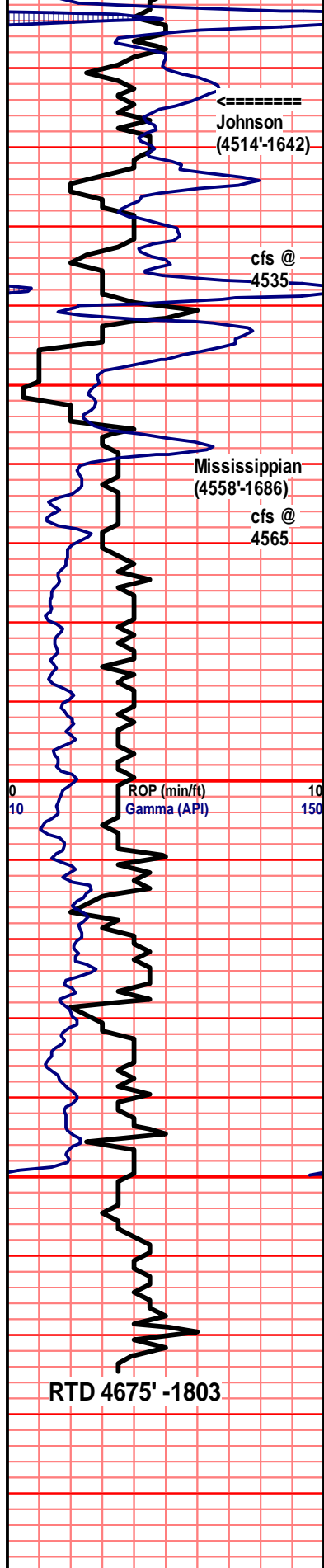
4480: incrs in blk carb sh, gry foss chrt, lots of crm/gry ool lm, no vis por, no odr, ns.

4490: aa, crm inxln lm, chlky, incrs in ool lm, chlky, poor por, no odr, ns.

4500: mstly lcrm chlky inxln lm, lots crm inxln lm, w/ poor inxln por, no odr, ns.

4510: incrs in gry and blk sh, mstly crm inxln lm, chlky/pyrtzd, no odr, ns.

Neutron Porosity (NAPI)
 1 10 100



30' oil spotted mud (3% oil, 97% mud).
Total Fluid 150' IFP:
58-98#/30" ISIP:
1131#/45" FFP:
103-122#/45" FSIP:
1074#60"

Johnson
(4514'-1642)

cfs @
4535

30MIN: mstly wht chlk, lots of gry/brwn inxln lm, w/ poor-no por, cemnt flooded por, gry inxln lm, w/ vuggy por, strng shw of brwn oil, fair odr upon brking. 60MIN: mstly chlk and gry inxln lm, no vis por, few shw rock same as thirty min, no odr, ns.

PUMP PRESSURE 950+

Mississippian
(4558'-1686)

cfs @
4565

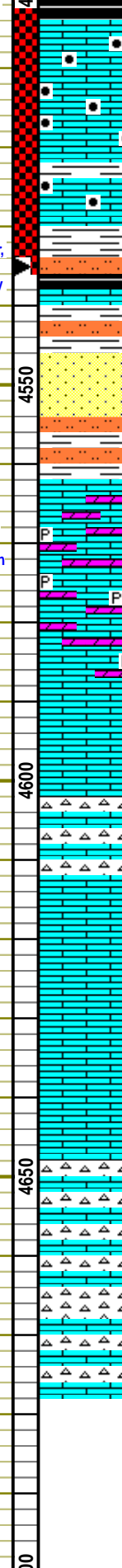
30MIN: lots of wht qtz ss, v. fn grn, rounded, well cemntd and sortd, poor por, crm semi foss chrt, lots of crm inxln lm, poor-no por, no odr, ns. 60MIN: sig decrs in ss, incrs in crm inxln lm, poor-no por, no odr, ns.

PUMP PRESSURE 950+

12/16/2013
mud info.
wt: 9.2
Funnel Vis. 55
Filtrate API: 8.0
Chloride 3,000
LCM # 1

PUMP PRESSURE 950+

30MIN: mstly wht chrt-chrty lm, crm-tan pack stn lm, fn-med grn, poor por, no odr, ns. 60MIN: same as thirty min, no sig change.



4520: lots of gry and green sh, tan-brwn xln lm, w/ poor pin point vuggy por, lght shw of brwn oil, v. weak odr.

4530: gry inxln lm, w/ inxln por, strng shw of brwn oil, fair-strng odr.

4540: incrs in green and gry sh, crm-tan inxln lm, poor por, pyrtzd, no odr, ns.

4550: greater incrs in green sh, shw of crm pack stn lm, v. fn-med grn, chlky, fair por, no odr, ns.

4560: shw of crm sandy lm, v. fn grn, rich in matrix clay, shw of wht-green qtz ss, v. fn grn, rounded, well cemntd and sortd, poor por, no odr, ns.

4570: incrs in gry sh and slt stn, mstly crm xln lm, pyrtzd, poor por, no odr, ns.

4580: aa, incrs in v. lght crm dolo/lm, med grn, fair intr prtcl por, no odr, ns.

4590: incrs in dolo/lm aa, no odr, ns.

4600: tan inxln lm, dense, poor-no inxln por, no odr, ns.

4610: tan inxln lm, dense, poor-no inxln por, sli foss, incrs in chlky lm, no odr, ns.

4620: incrs in crm chrt, mstly tan-drk crminxln lm, dense, poor por, no odr, ns.

4630: incrs in gry and green sh, lm aa, no odr, ns.

4640: drk crm pack stn lm, sli xln, med-cors grn, poor por, no odr, ns.

4650: mstly drk crm fn xln lm, no vis por, few ool cast lm, fair-poor ool cast por, no odr, ns.

4660: aa, incrs fn xln lm, no vis por, cemnt flooded fracs, no odr, ns.

4670: tan inxln lm, sli ool, poor-no por no odr, ns.

4675: aa, incrs in crm chrt, poor-no por, no odr, ns.

