



**TRILOBITE
TESTING, INC.**

DRILL STEM TEST REPORT

Pioneer Resources

25-14s-30w Gove Co. KS

80 Windmill Drive
Phillipsburg KS, 67661

Groom #1

Job Ticket: 53083

DST#: 2

ATTN: Charlie Strudavant

Test Start: 2013.06.29 @ 23:25:00

GENERAL INFORMATION:

Formation: **Kansas City " H "**

Deviated: No Whipstock: ft (KB)

Time Tool Opened: 02:02:45

Time Test Ended: 07:26:45

Test Type: Conventional Bottom Hole (Reset)

Tester: Jace McKinney

Unit No: 46

Interval: 3896.00 ft (KB) To 3930.00 ft (KB) (TVD)

Reference Elevations: 2688.00 ft (KB)

Total Depth: 3930.00 ft (KB) (TVD)

2679.00 ft (CF)

Hole Diameter: 7.88 inches Hole Condition: Fair

KB to GR/CF: 9.00 ft

Serial #: 8675

Inside

Press @ Run Depth: 29.32 psig @ 3897.00 ft (KB)

Capacity: 8000.00 psig

Start Date: 2013.06.29

End Date: 2013.06.30

Last Calib.: 2013.06.30

Start Time: 23:25:15

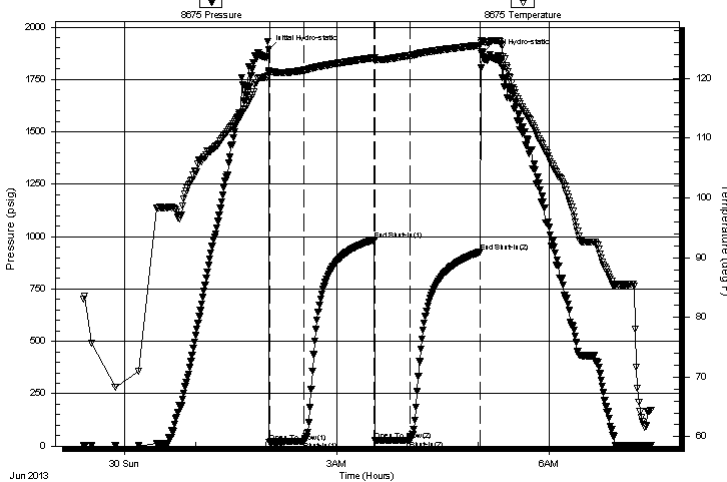
End Time: 07:26:45

Time On Btm: 2013.06.30 @ 02:02:15

Time Off Btm: 2013.06.30 @ 05:03:00

TEST COMMENT: Built to 1" blow
No return blow
No blow
No return blow

Pressure vs. Time



PRESSURE SUMMARY

Time (Min.)	Pressure (psig)	Temp (deg F)	Annotation
0	1894.46	121.36	Initial Hydro-static
1	18.80	120.88	Open To Flow (1)
30	24.10	121.39	Shut-In(1)
90	984.72	123.47	End Shut-In(1)
90	25.70	123.09	Open To Flow (2)
120	29.32	123.85	Shut-In(2)
180	926.38	125.57	End Shut-In(2)
181	1871.52	126.26	Final Hydro-static

Recovery

Length (ft)	Description	Volume (bbl)
20.00	100% Mud w ith oil scum	0.28

* Recovery from multiple tests

Gas Rates

Choke (inches)	Pressure (psig)	Gas Rate (Mcf/d)



**TRILOBITE
TESTING, INC.**

DRILL STEM TEST REPORT

FLUID SUMMARY

Pioneer Resources

25-14s-30w Gove Co. KS

80 Windmill Drive
Phillipsburg KS, 67661

Groom #1

Job Ticket: 53083

DST#: 2

ATTN: Charlie Strudavant

Test Start: 2013.06.29 @ 23:25:00

Mud and Cushion Information

Mud Type: Gel Chem

Cushion Type:

Oil API:

deg API

Mud Weight: 9.00 lb/gal

Cushion Length:

ft

Water Salinity:

ppm

Viscosity: 52.00 sec/qt

Cushion Volume:

bbbl

Water Loss: 6.00 in³

Gas Cushion Type:

Resistivity: ohm.m

Gas Cushion Pressure:

psig

Salinity: 900.00 ppm

Filter Cake: 1.00 inches

Recovery Information

Recovery Table

Length ft	Description	Volume bbl
20.00	100% Mud with oil scum	0.281

Total Length: 20.00 ft Total Volume: 0.281 bbl

Num Fluid Samples: 0

Num Gas Bombs: 0

Serial #:

Laboratory Name:

Laboratory Location:

Recovery Comments:

