



**TRILOBITE  
TESTING, INC.**

# DRILL STEM TEST REPORT

Pioneer Resources

**25-14s-30w Gove Co. KS**

80 Windmill Drive  
Phillipsburg KS, 67661

**Groom #1**

Job Ticket: 53084

**DST#: 3**

ATTN: Charlie Strudavant

Test Start: 2013.06.30 @ 21:05:00

## GENERAL INFORMATION:

Formation: **Kansas City " I, J**

Deviated: No Whipstock: ft (KB)

Time Tool Opened: 00:39:30

Time Test Ended: 05:42:00

Test Type: Conventional Bottom Hole (Reset)

Tester: Jace McKinney

Unit No: 46

**Interval: 3928.00 ft (KB) To 4020.00 ft (KB) (TVD)**

Reference Elevations: 2688.00 ft (KB)

Total Depth: 4020.00 ft (KB) (TVD)

2679.00 ft (CF)

Hole Diameter: 7.88 inches Hole Condition: Fair

KB to GR/CF: 9.00 ft

**Serial #: 8675**

**Inside**

Press @ Run Depth: 43.67 psig @ 3929.00 ft (KB)

Capacity: 8000.00 psig

Start Date: 2013.06.30

End Date:

2013.07.01

Last Calib.: 2013.07.01

Start Time: 21:05:15

End Time:

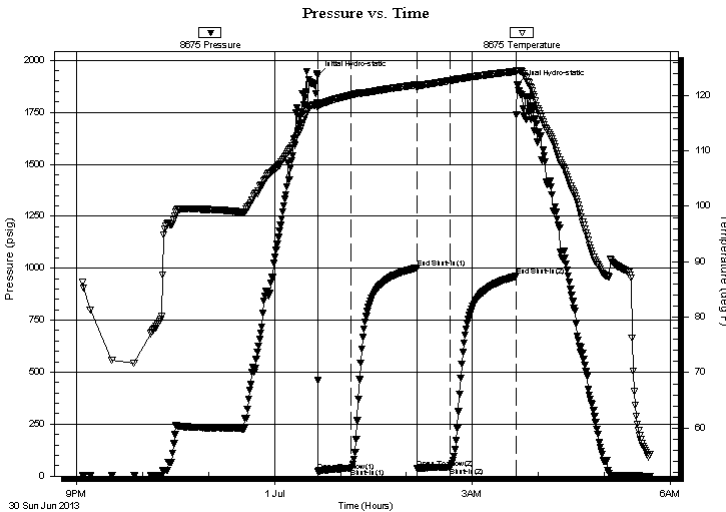
05:42:00

Time On Btm: 2013.07.01 @ 00:39:00

Time Off Btm: 2013.07.01 @ 03:41:00

**TEST COMMENT:** Built to 2" blow  
No return blow  
weak surface blow  
No return blow

## PRESSURE SUMMARY



Time (Min.)	Pressure (psig)	Temp (deg F)	Annotation
0	1928.08	118.61	Initial Hydro-static
1	23.35	118.05	Open To Flow (1)
31	37.88	120.03	Shut-In(1)
91	1001.33	121.91	End Shut-In(1)
91	38.28	121.40	Open To Flow (2)
121	43.67	122.66	Shut-In(2)
181	961.49	124.31	End Shut-In(2)
182	1884.12	124.49	Final Hydro-static

## Recovery

Length (ft)	Description	Volume (bbl)
50.00	100% Mud w ith few oil spots	0.70

## Gas Rates

	Choke (inches)	Pressure (psig)	Gas Rate (Mcf/d)

\* Recovery from multiple tests



**TRILOBITE  
TESTING, INC.**

# DRILL STEM TEST REPORT

**FLUID SUMMARY**

Pioneer Resources

**25-14s-30w Gove Co. KS**

80 Windmill Drive  
Phillipsburg KS, 67661

**Groom #1**

Job Ticket: 53084

**DST#: 3**

ATTN: Charlie Strudavant

Test Start: 2013.06.30 @ 21:05:00

## Mud and Cushion Information

Mud Type: Gel Chem

Cushion Type:

Oil API:

deg API

Mud Weight: 9.00 lb/gal

Cushion Length:

ft

Water Salinity:

ppm

Viscosity: 57.00 sec/qt

Cushion Volume:

bbf

Water Loss: 6.80 in<sup>3</sup>

Gas Cushion Type:

Resistivity: ohm.m

Gas Cushion Pressure:

psig

Salinity: 1100.00 ppm

Filter Cake: 1.00 inches

## Recovery Information

Recovery Table

Length ft	Description	Volume bbf
50.00	100% Mud with few oil spots	0.701

Total Length: 50.00 ft      Total Volume: 0.701 bbf

Num Fluid Samples: 0

Num Gas Bombs: 0

Serial #:

Laboratory Name:

Laboratory Location:

Recovery Comments:

