



**TRILOBITE TESTING, INC.**

# DRILL STEM TEST REPORT

Pioneer Resources  
 80 Windmill Drive  
 Phillipsburg KS, 67661  
 ATTN: Charlie Strudavant

**25-14s-30w Gove Co. KS**

**Groom #1**

Job Ticket: 53056

**DST#: 5**

Test Start: 2013.07.03 @ 04:05:00

## GENERAL INFORMATION:

Formation: **Cherokee - Johnson**

Deviated: No Whipstock: ft (KB)

Time Tool Opened: 06:07:15

Time Test Ended: 11:12:00

Test Type: Conventional Bottom Hole (Reset)

Tester: Jace McKinney

Unit No: 46

**Interval: 4228.00 ft (KB) To 4330.00 ft (KB) (TVD)**

Reference Elevations: 2688.00 ft (KB)

Total Depth: 4330.00 ft (KB) (TVD)

2679.00 ft (CF)

Hole Diameter: 7.88 inches Hole Condition: Fair

KB to GR/CF: 9.00 ft

**Serial #: 8675**

**Inside**

Press @ Run Depth: 52.09 psig @ 4229.00 ft (KB)

Capacity: 8000.00 psig

Start Date: 2013.07.03

End Date: 2013.07.03

Last Calib.: 2013.07.03

Start Time: 04:05:15

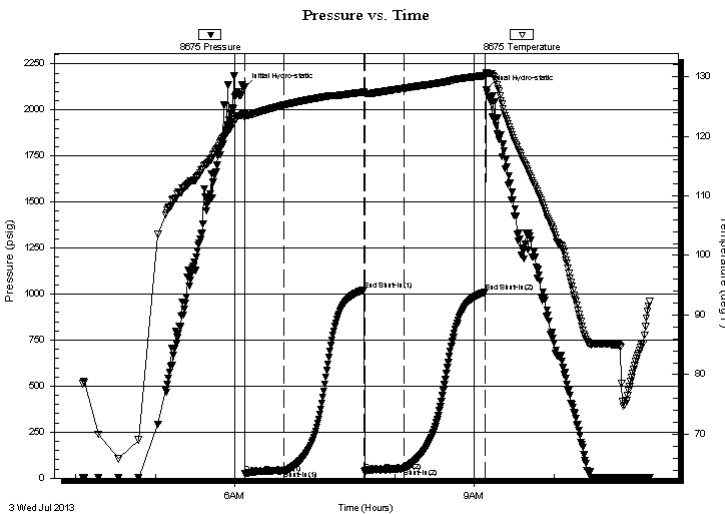
End Time: 11:12:00

Time On Btm: 2013.07.03 @ 06:07:00

Time Off Btm: 2013.07.03 @ 09:09:15

**TEST COMMENT:** Built to 4" blow  
 No return blow  
 Built to 9 1/2" blow  
 No return blow

## PRESSURE SUMMARY



Time (Min.)	Pressure (psig)	Temp (deg F)	Annotation
0	2124.18	123.82	Initial Hydro-static
1	23.46	123.12	Open To Flow (1)
30	40.71	125.21	Shut-In(1)
90	1022.54	127.40	End Shut-In(1)
91	34.57	127.11	Open To Flow (2)
120	52.09	128.02	Shut-In(2)
182	1010.65	130.15	End Shut-In(2)
183	2111.56	130.69	Final Hydro-static

## Recovery

Length (ft)	Description	Volume (bbl)
0.00	174 Feet Gas In Pipe	0.00
70.00	gcom 10%G 40%O 50%M	0.98

\* Recovery from multiple tests

## Gas Rates

Choke (inches)	Pressure (psig)	Gas Rate (Mcf/d)



**TRILOBITE  
TESTING, INC.**

# DRILL STEM TEST REPORT

**FLUID SUMMARY**

Pioneer Resources

**25-14s-30w Gove Co. KS**

80 Windmill Drive  
Phillipsburg KS, 67661

**Groom #1**

Job Ticket: 53056

**DST#: 5**

ATTN: Charlie Strudavant

Test Start: 2013.07.03 @ 04:05:00

## Mud and Cushion Information

Mud Type: Gel Chem

Cushion Type:

Oil API:

deg API

Mud Weight: 9.00 lb/gal

Cushion Length:

ft

Water Salinity:

ppm

Viscosity: 65.00 sec/qt

Cushion Volume:

bbbl

Water Loss: 7.00 in<sup>3</sup>

Gas Cushion Type:

Resistivity: ohm.m

Gas Cushion Pressure:

psig

Salinity: 1200.00 ppm

Filter Cake: 1.00 inches

## Recovery Information

Recovery Table

Length ft	Description	Volume bbbl
0.00	174 Feet Gas In Pipe	0.000
70.00	gcom 10%G 40%O 50%M	0.982

Total Length: 70.00 ft      Total Volume: 0.982 bbl

Num Fluid Samples: 0

Num Gas Bombs: 0

Serial #:

Laboratory Name:

Laboratory Location:

Recovery Comments:

