



TRILOBITE TESTING, INC.

DRILL STEM TEST REPORT

Pioneer Resources

25-14s-30w Gove Co. KS

80 Windmill Drive
Phillipsburg KS, 67661

Groom #1

Job Ticket: 53057

DST#: 6

ATTN: Charlie Strudavant

Test Start: 2013.07.03 @ 23:10:00

GENERAL INFORMATION:

Formation: **Miss - Spergen**

Deviated: No Whipstock: ft (KB)

Time Tool Opened: 01:57:15

Time Test Ended: 07:59:45

Test Type: Conventional Straddle (Reset)

Tester: Jace McKinney

Unit No: 46

Interval: 4394.00 ft (KB) To 4404.00 ft (KB) (TVD)

Reference Elevations: 2688.00 ft (KB)

Total Depth: 4414.00 ft (KB) (TVD)

2679.00 ft (CF)

Hole Diameter: 7.88 inches Hole Condition: Fair

KB to GR/CF: 9.00 ft

Serial #: 8675

Inside

Press @ Run Depth: 33.65 psig @ 4395.00 ft (KB)

Capacity: 8000.00 psig

Start Date: 2013.07.03

End Date:

2013.07.04

Last Calib.: 2013.07.04

Start Time: 23:10:15

End Time:

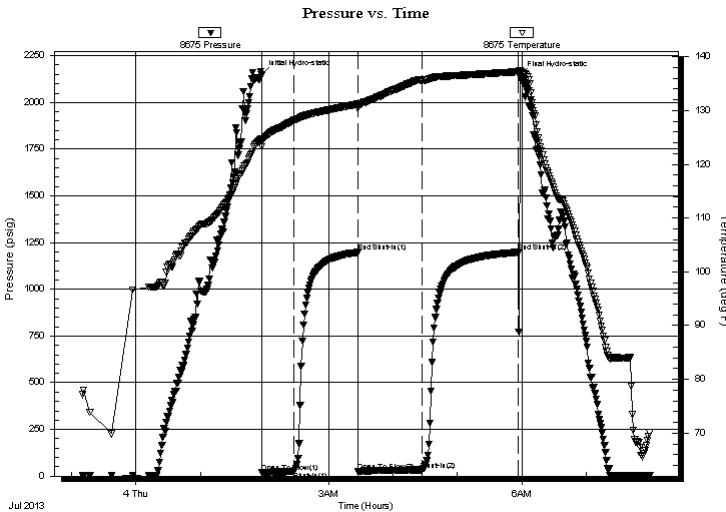
07:59:45

Time On Btm: 2013.07.04 @ 01:57:00

Time Off Btm: 2013.07.04 @ 05:58:00

TEST COMMENT: Built to 1 1/2" blow
No return blow
Built to 1/4" blow
No return blow

PRESSURE SUMMARY



Time (Min.)	Pressure (psig)	Temp (deg F)	Annotation
0	2146.85	124.63	Initial Hydro-static
1	19.35	123.21	Open To Flow (1)
31	24.96	128.25	Shut-In(1)
90	1198.01	131.20	End Shut-In(1)
91	27.12	130.39	Open To Flow (2)
150	33.65	135.63	Shut-In(2)
240	1198.05	137.20	End Shut-In(2)
241	2141.24	137.45	Final Hydro-static

Recovery

Length (ft)	Description	Volume (bbl)
5.00	Clean Oil	0.07
35.00	ocm 5%O 95%M	0.49

* Recovery from multiple tests

Gas Rates

	Choke (inches)	Pressure (psig)	Gas Rate (Mcf/d)



**TRILOBITE
TESTING, INC.**

DRILL STEM TEST REPORT

FLUID SUMMARY

Pioneer Resources

25-14s-30w Gove Co. KS

80 Windmill Drive
Phillipsburg KS, 67661

Groom #1

Job Ticket: 53057

DST#: 6

ATTN: Charlie Strudavant

Test Start: 2013.07.03 @ 23:10:00

Mud and Cushion Information

Mud Type: Gel Chem

Cushion Type:

Oil API:

deg API

Mud Weight: 9.00 lb/gal

Cushion Length:

ft

Water Salinity:

ppm

Viscosity: 58.00 sec/qt

Cushion Volume:

bbbl

Water Loss: 7.00 in³

Gas Cushion Type:

Resistivity: ohm.m

Gas Cushion Pressure:

psig

Salinity: 1400.00 ppm

Filter Cake: 1.00 inches

Recovery Information

Recovery Table

Length ft	Description	Volume bbl
5.00	Clean Oil	0.070
35.00	ocm 5%O 95%M	0.491

Total Length: 40.00 ft Total Volume: 0.561 bbl

Num Fluid Samples: 0

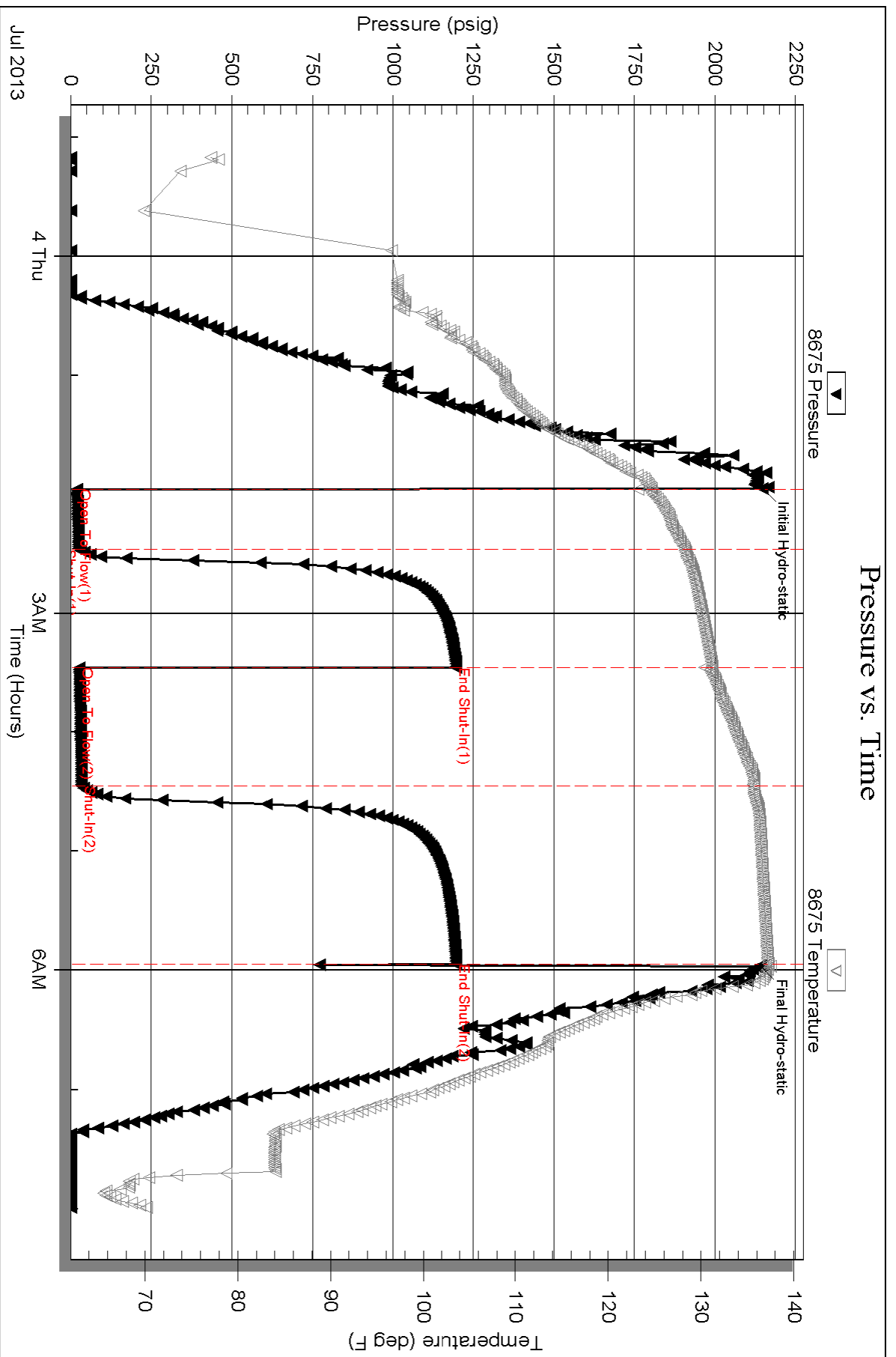
Num Gas Bombs: 0

Serial #:

Laboratory Name:

Laboratory Location:

Recovery Comments:



Serial #: 8650

Outside Pioneer Resources

Groom#1

DST Test Number: 6

