

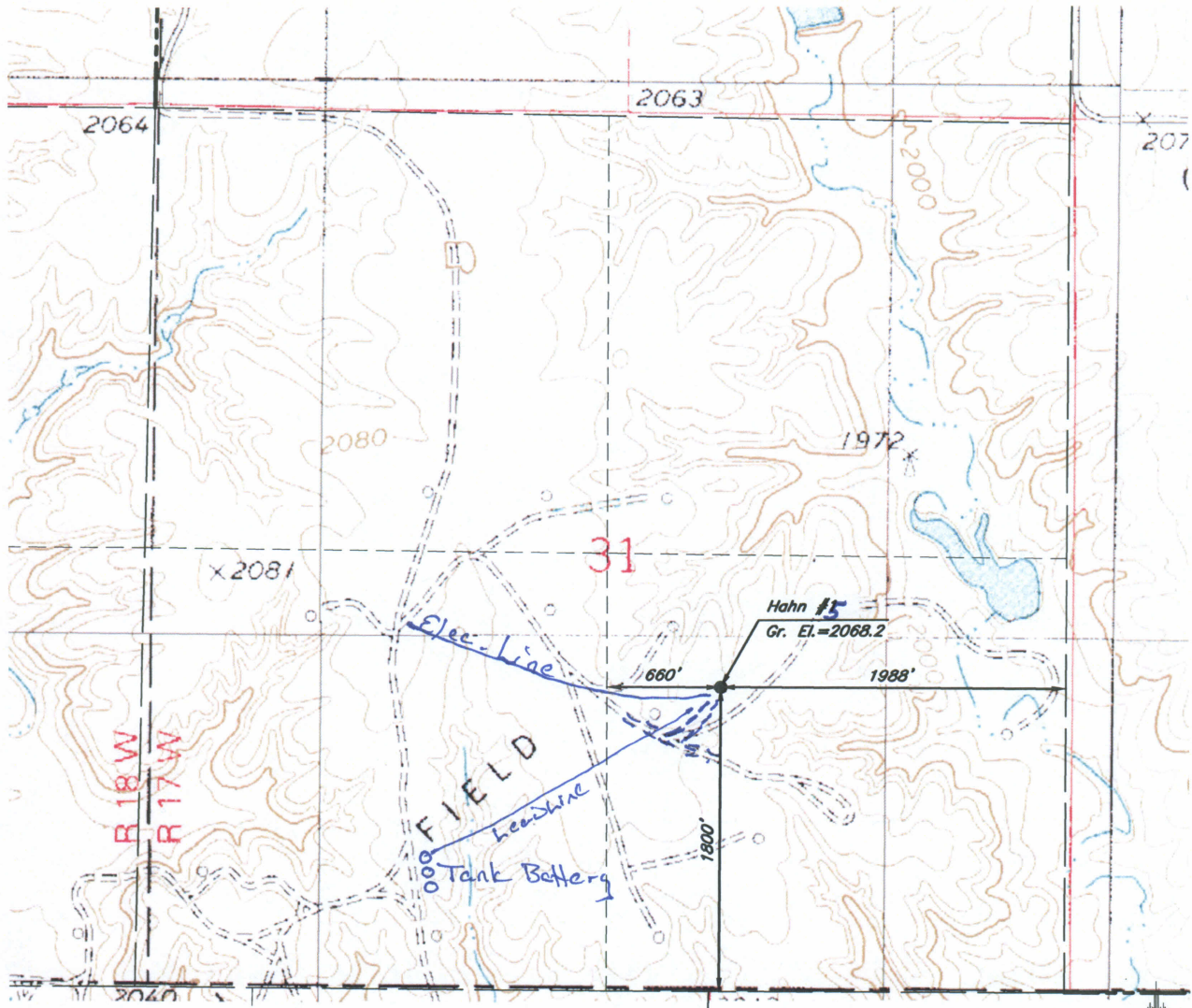
PENCO ENGINEERING, P.A.
P.O. BOX 392
PLAINVILLE, KS 67663
(785) 434-4611

NW 1/4, SE 1/4, Section 31, T10S, R17W
LOCATION

October 21, 2013
DATE

Hahn #5
LEASE LOCATION NO.

Rooks
COUNTY



Elevations based on NGS Benchmark E 158 Reset.
Standard disk located on the south end of the west hub guard of the Saline River bridge on
U.S. Hwy. 183. NAVD 88 Sea Level Elevation= 1905.80 feet.

This Survey does not constitute a boundary survey. Section corners were not found or set.
Physical evidence was used to approximate the location of the section corners.

Scale: 1"= 1000'