



## DRILL STEM TEST REPORT

Prepared For: **Trans Pacific Oil Corporation**

100 South Main STE 200  
Wichita Kansas 67202

ATTN: Alex Chapin

**Allison B #8**

**13-11s-19w-Ellis**

Start Date: 2013.11.28 @ 04:42:00

End Date: 2013.11.28 @ 10:00:00

Job Ticket #: 18546                      DST #: 1

Superior Testers Enterprises LLC  
PO Box 138 Great Bend KS 67530  
1-800-792-6902

Printed: 2013.11.28 @ 20:13:10



# DRILL STEM TEST REPORT

Trans Pacific Oil Corporation

**13-11s-19w-Ellis**

100 South Main STE 200  
Wichita Kansas 67202

**Allison B #8**

Job Ticket: 18546

**DST#: 1**

ATTN: Alex Chapin

Test Start: 2013.11.28 @ 04:42:00

## GENERAL INFORMATION:

Formation: **Lansing A-B-C-D**

Deviated: No Whipstock: ft (KB)

Time Tool Opened: 06:04:00

Time Test Ended: 10:00:00

Test Type: Conventional Bottom Hole (Initial)

Tester: Dustin Ellis

Unit No: 3315-Great Bend -162

**Interval: 3200.00 ft (KB) To 3285.00 ft (KB) (TVD)**

Reference Elevations: 1961.00 ft (KB)

Total Depth: 3285.00 ft (KB) (TVD)

1956.00 ft (CF)

Hole Diameter: 7.88 inches Hole Condition: Fair

KB to GR/CF: 5.00 ft

**Serial #: 8524 Inside**

Press @ RunDepth: 76.09 psia @ 3281.31 ft (KB)

Capacity: 5000.00 psia

Start Date: 2013.11.28 End Date: 2013.11.28

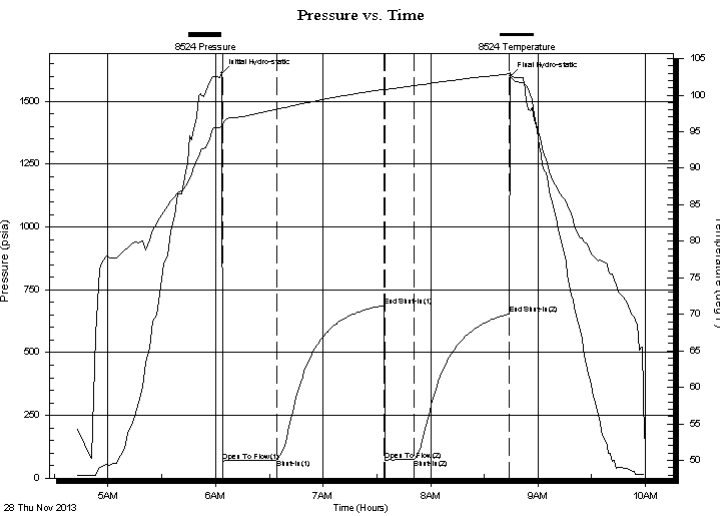
Last Calib.: 2013.11.28

Start Time: 04:42:00 End Time: 10:00:00

Time On Btm: 2013.11.28 @ 06:03:30

Time Off Btm: 2013.11.28 @ 08:44:30

**TEST COMMENT:** 1st Open 30 minutes Very weak surface blow through out.  
1st Shut in 60 minutes No blow back  
2nd Open 15 minutes Dead  
2nd Shut in 60 minutes No blow back



## PRESSURE SUMMARY

Time (Min.)	Pressure (psia)	Temp (deg F)	Annotation
0	1612.50	95.74	Initial Hydro-static
1	67.43	95.80	Open To Flow (1)
31	73.47	98.07	Shut-In(1)
91	687.01	100.81	End Shut-In(1)
91	72.06	100.68	Open To Flow (2)
108	76.09	101.32	Shut-In(2)
161	652.87	102.92	End Shut-In(2)
161	1599.41	103.12	Final Hydro-static

## Recovery

Length (ft)	Description	Volume (bbl)
5.00	Mud 100%	0.07

## Gas Rates

Choke (inches)	Pressure (psia)	Gas Rate (Mcf/d)



# DRILL STEM TEST REPORT

Trans Pacific Oil Corporation

**13-11s-19w-Ellis**

100 South Main STE 200  
Wichita Kansas 67202

**Allison B #8**

Job Ticket: 18546

**DST#: 1**

ATTN: Alex Chapin

Test Start: 2013.11.28 @ 04:42:00

## GENERAL INFORMATION:

Formation: **Lansing A-B-C-D**

Deviated: No Whipstock: ft (KB)

Time Tool Opened: 06:04:00

Time Test Ended: 10:00:00

Test Type: Conventional Bottom Hole (Initial)

Tester: Dustin Ellis

Unit No: 3315-Great Bend -162

**Interval: 3200.00 ft (KB) To 3285.00 ft (KB) (TVD)**

Reference Elevations: 1961.00 ft (KB)

Total Depth: 3285.00 ft (KB) (TVD)

1956.00 ft (CF)

Hole Diameter: 7.88 inches Hole Condition: Fair

KB to GR/CF: 5.00 ft

**Serial #: 6839 Outside**

Press @ RunDepth: 651.65 psia @ 3282.31 ft (KB)

Capacity: 5000.00 psia

Start Date: 2013.11.28 End Date: 2013.11.28

Last Calib.: 2013.11.28

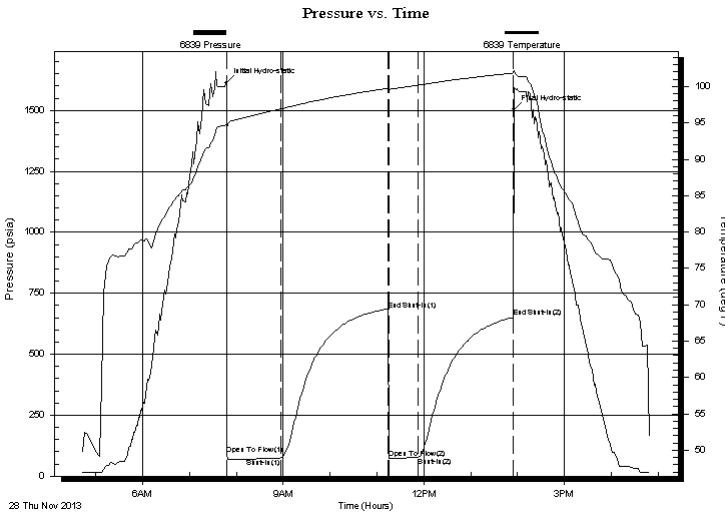
Start Time: 04:42:00 End Time: 16:49:00

Time On Btm: 2013.11.28 @ 07:47:00

Time Off Btm: 2013.11.28 @ 13:55:00

**TEST COMMENT:** 1st Open 30 minutes Very weak surface blow through out.  
1st Shut in 60 minutes No blow back  
2nd Open 15 minutes Dead  
2nd Shut in 60 minutes No blow back

## PRESSURE SUMMARY



Time (Min.)	Pressure (psia)	Temp (deg F)	Annotation
0	1612.83	94.86	Initial Hydro-static
1	89.00	94.01	Open To Flow (1)
70	73.41	96.94	Shut-In(1)
208	681.42	99.76	End Shut-In(1)
208	72.53	99.45	Open To Flow (2)
246	76.81	100.17	Shut-In(2)
368	651.65	101.86	End Shut-In(2)
368	1504.48	102.22	Final Hydro-static

## Recovery

Length (ft)	Description	Volume (bbl)
5.00	Mud 100%	0.07

## Gas Rates

Choke (inches)	Pressure (psia)	Gas Rate (Mcf/d)



# DRILL STEM TEST REPORT

**TOOL DIAGRAM**

Trans Pacific Oil Corporation

**13-11s-19w-Ellis**

100 South Main STE 200  
Wichita Kansas 67202

**Allison B #8**

Job Ticket: 18546

**DST#: 1**

ATTN: Alex Chapin

Test Start: 2013.11.28 @ 04:42:00

## Tool Information

Drill Pipe:	Length: 3202.00 ft	Diameter: 3.80 inches	Volume: 44.92 bbl	Tool Weight: 2000.00 lb
Heavy Wt. Pipe:	Length: 0.00 ft	Diameter: 0.00 inches	Volume: 0.00 bbl	Weight set on Packer: 20000.00 lb
Drill Collar:	Length: 0.00 ft	Diameter: 0.00 inches	Volume: 0.00 bbl	Weight to Pull Loose: 52000.00 lb
			<u>Total Volume: 44.92 bbl</u>	Tool Chased 0.00 ft
Drill Pipe Above KB:	22.00 ft			String Weight: Initial 42000.00 lb
Depth to Top Packer:	3200.00 ft			Final 42000.00 lb
Depth to Bottom Packer:	ft			
Interval between Packers:	85.31 ft			
Tool Length:	105.31 ft			
Number of Packers:	2	Diameter: 6.75 inches		

Tool Comments:

Tool Description	Length (ft)	Serial No.	Position	Depth (ft)	Accum. Lengths
Shut-In Tool	5.00			3185.00	
Hydraulic Tool	5.00			3190.00	
Packer	5.00			3195.00	20.00 Bottom Of Top Packer
Packer	5.00			3200.00	
Anchor	10.00			3210.00	
Change Over Sub	0.75			3210.75	
Drill Pipe	62.81			3273.56	
Change Over Sub	0.75			3274.31	
Anchor	6.00			3280.31	
Recorder	1.00	8524	Inside	3281.31	
Recorder	1.00	6839	Outside	3282.31	
Bull Plug	3.00			3285.31	85.31 Bottom Packers & Anchor

**Total Tool Length: 105.31**



# DRILL STEM TEST REPORT

## FLUID SUMMARY

Trans Pacific Oil Corporation

**13-11s-19w-Ellis**

100 South Main STE 200  
Wichita Kansas 67202

**Allison B #8**

Job Ticket: 18546

**DST#: 1**

ATTN: Alex Chapin

Test Start: 2013.11.28 @ 04:42:00

### Mud and Cushion Information

Mud Type: Gel Chem

Cushion Type:

Oil API:

deg API

Mud Weight: 9.00 lb/gal

Cushion Length:

ft

Water Salinity:

ppm

Viscosity: 52.00 sec/qt

Cushion Volume:

bbbl

Water Loss: 6.80 in<sup>3</sup>

Gas Cushion Type:

Resistivity: ohm.m

Gas Cushion Pressure:

psia

Salinity: 1900.00 ppm

Filter Cake: 1.00 inches

### Recovery Information

Recovery Table

Length ft	Description	Volume bbl
5.00	Mud 100%	0.070

Total Length: 5.00 ft      Total Volume: 0.070 bbl

Num Fluid Samples: 0

Num Gas Bombs: 0

Serial #:

Laboratory Name:

Laboratory Location:

Recovery Comments:

Serial #: 8524

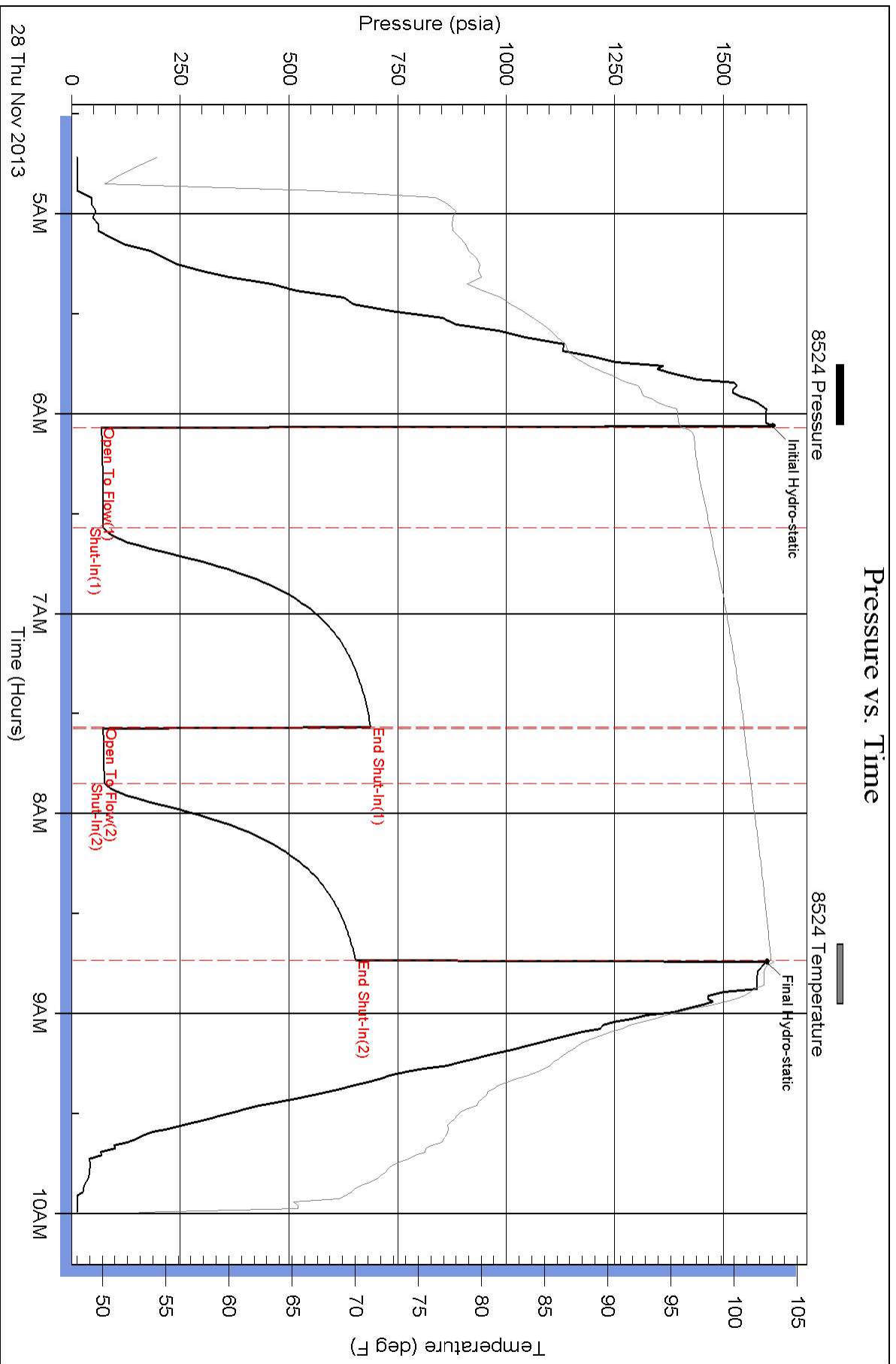
Inside

Trans Pacific Oil Corporation

Allison B #8

DST Test Number: 1

### Pressure vs. Time



Superior Testers Enterprises LLC

Ref. No: 18546

Printed: 2013.11.28 @ 20:13:11

### Pressure vs. Time

