

GEOLOGIST'S REPORT

WellSight Systems

Scale 1:240 (5"=100") Imperial
Measured Depth Log

Well Name: CARSON #2-25

API: 15-171-21022-00-00

Location: 1230' FSL & 435' FWL OF SECTION 25 T16S R 34W

License Number: KCC #7311

Spud Date: 2-4-2014

Surface Coordinates: 1230' FSL AND 435' FWL OF SECTION

Region: SCOTT COUNTY, KANS
Drilling Completed: 2/12/2014

Bottom Hole VERTICAL TEST

Coordinates:

Ground Elevation (ft): 3100

Logged Interval (ft): 3700

Formation: MISSISSIPPIAN

Type of Drilling Fluid: GEL

K.B. Elevation (ft): 3112

Total Depth (ft): 4660

To: 5000

Printed by STRIP.LOG from WellSight Systems 1-800-447-1534 www.WellSight.com

OPERATOR

Company: SHAKESPEARE OIL COMPANY, INC.

Address: 202 WEST MAIN STREET

SALEM, IL

62881

GEOLOGIST

Name: MARK W. HERNDON

Company: TRC

Address: P.O. BOX 5958

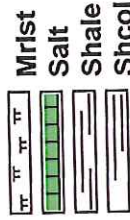
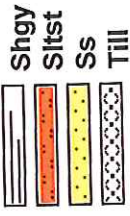
NORMAN, OK

73070

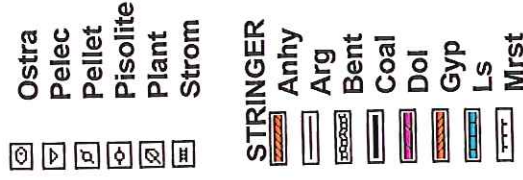
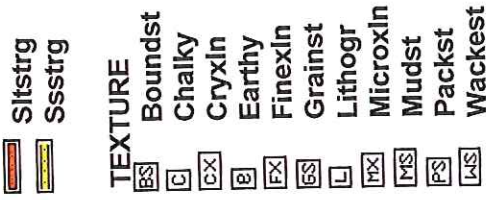
Cores

DSTs

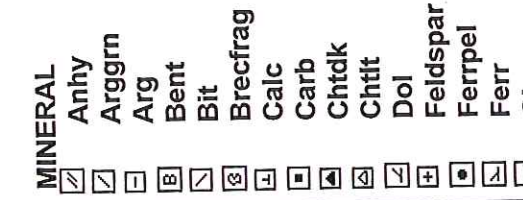
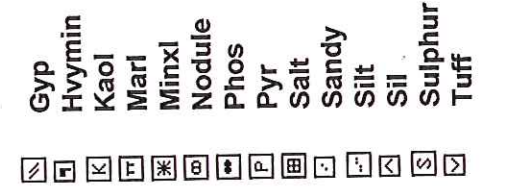
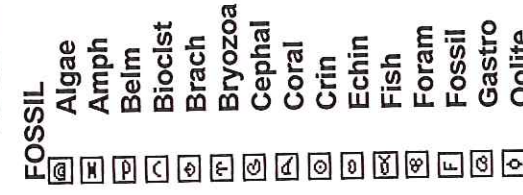
Comments



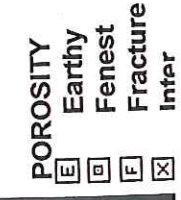
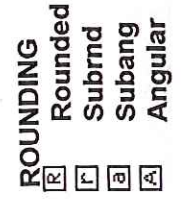
ROCK TYPES



ACCESSORIES



OTHER SYMBOLS

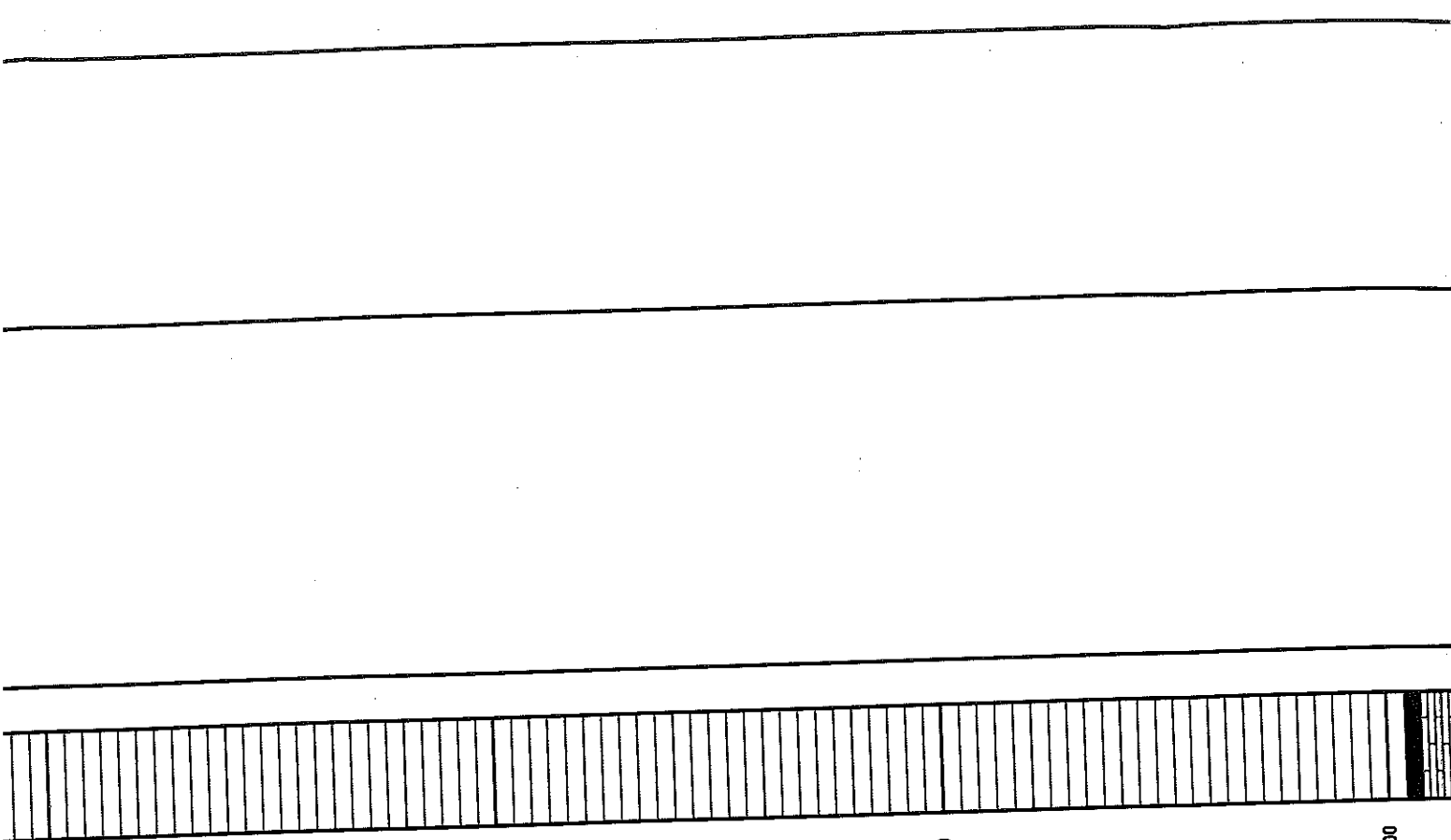


- Chtdk
- Chtit
- Dol
- Feldspar
- Ferrpel
- Ferr
- Glau
- Sandy
- Silt
- Sil
- Sulphur
- Tuff
- Echin
- Fish
- Foram
- Fossil
- Gastro
- Oolite
- Bent
- Coal
- Dol
- Gyp
- LS
- Mrst
- Lithogr
- MicroxIn
- Mudst
- Packst
- Wackest

OTHER SYMBOLS

- POROSITY**
- Earthy
- Fenest
- Fracture
- Inter
- Moldic
- Organic
- Pinpoint
- Vuggy
- SORTING**
- Well
- Moderate
- Poor
- ROUNDING**
- Rounded
- Subrond
- Subang
- Angular
- OIL SHOW**
- Even
- Spotted**
- Ques
- Dead
- INTERVAL**
- Core
- Dst
- EVENT**
- Rft
- Sidewall

Curve Track 1	Depth	Lithology	Oil Shows	Geological Descriptions	REMARKS
<p>ROP (min/ft)</p>	<p>3750</p>				

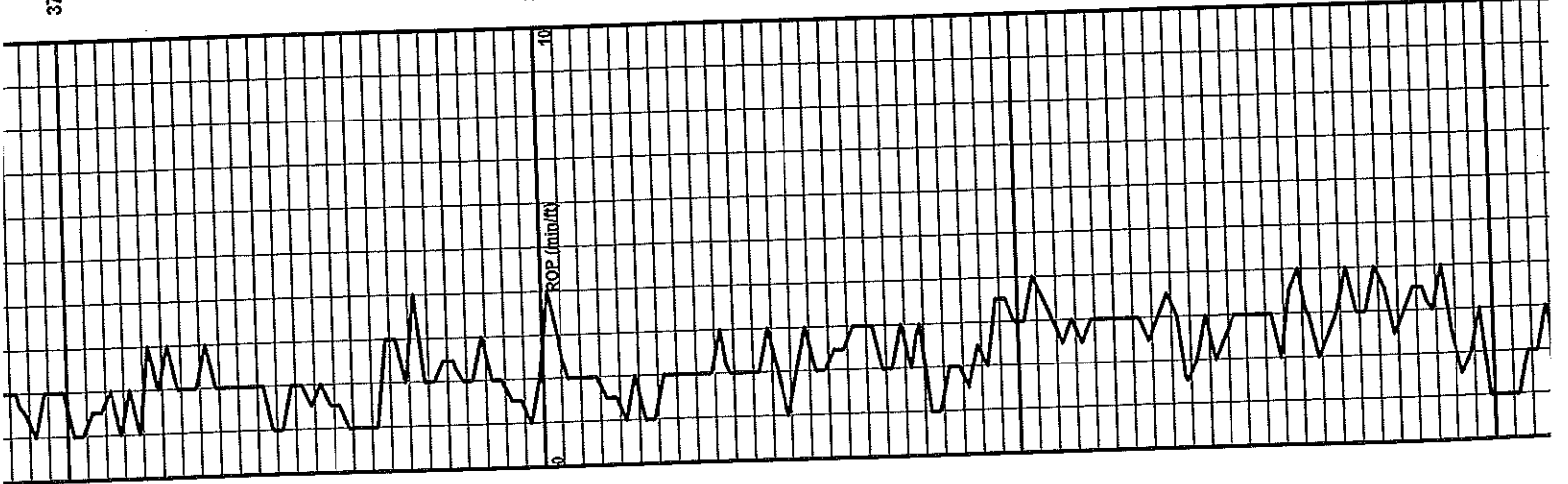


3750

3800

3850

3900



VIS: 53 WT: 9.1

SHALE: BLACK

SHALE: GRY TO DRK GRY

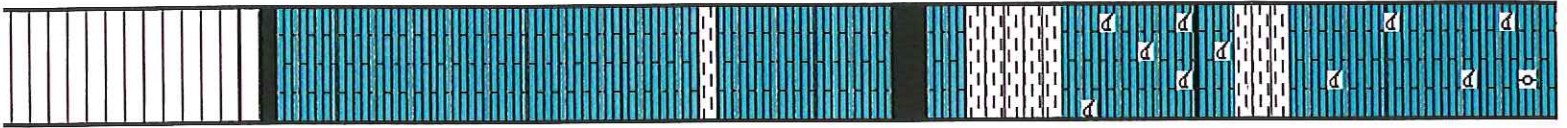
LS: WH TO TAN, COARSE XTLN, WELL CMNTD, FOSS (CORAL), OCC OIDS. SLT SHO HVY DRK BRN DEAD OIL STN. POOR VS POROSITY.

SHALE: GRY TO DRK GRY

LS: WH-CRM, FXLN, DENSE, ABNT FOSS (CORAL), OCC OIDS. SS SPOTY HVY DRK BRN DEAD OIL STN. POOR PIN PNT/VIS POR. NSLO

LS: CRMY WH TO LT TAN, DENSE, NUM FOSSILS (CORAL), OCC DK BRN DEAD OIL STN

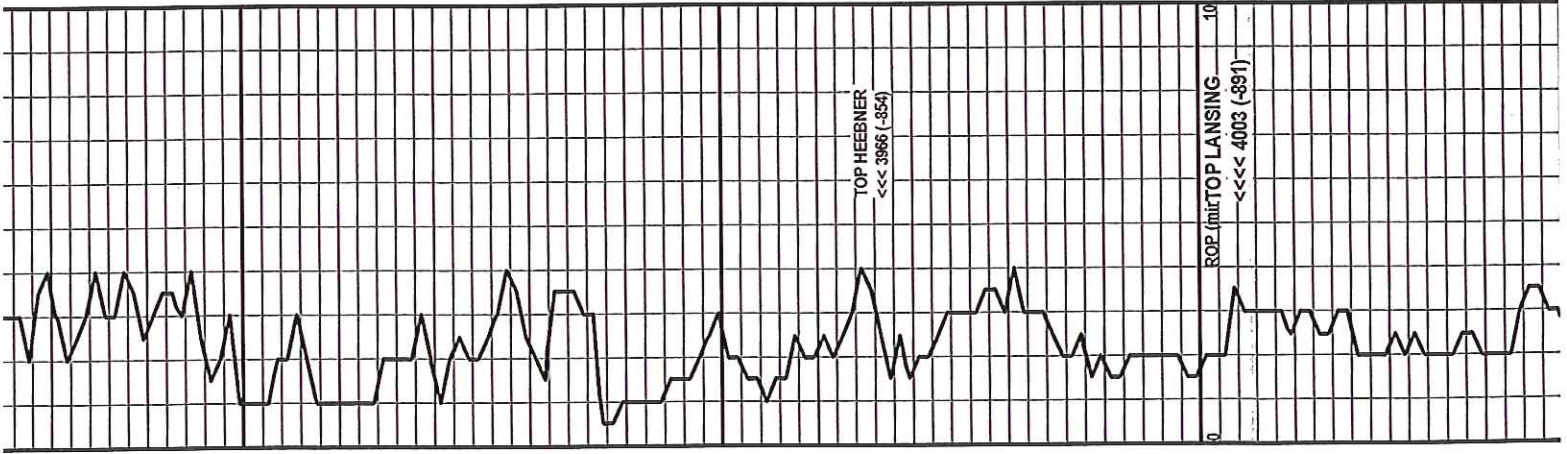
LS: LT TAN, NUM FOSS (CORAL), OCC OIDS, NVP, SS DEAD OIL



3900

3950

4000



VIS: 53 WT: 9.1

DST #: 4025 TO 4120
(LKC A, LKC B, LKC C)
15-30-45-60
IF: BOB 4 MIN-NO RETURN
FF: BOB 4 MIN-NO RETURN
RECOVERY:
434' MCW (90% WTR)
248' MCW (60% WTR)
310' MUD
992' TO TAL FLUID
IFP: 70-220 FFP: 221-492
ISIP: 1110 FSIP: 1099
BHT: 112 F
CHLORIDES: 13,000 PPM

SHALE: GRAY TO DRK GRAY

LS: WH-CRIM, FXLN, DENSE, ABNT FOSS (CORAL), OCC OIDS, SS SPOTY HVY DRK BRN DEAD OIL STN. POOR PIN PNT VIS POR. NSLO

LS: CRIMY WH TO LT TAN, DENSE, NUM FOSSILS (CORAL), OCC DK BRN DEAD OIL STN

LS: LT TAN, NUM FOSS (CORAL), OCC OIDS, NVP, SS DEAD OIL

SHALE: GRAY TO DRK GRAY, FISSILE

LS: CRIMY TO GRAY, FN XTLM, FOS (CORAL), WELL CMNTD, OCC PP VUGGY POR, VRY SPY S DK BRN FO, NO ODOR, NO FLOR. OIL SHOW LOOKS LIKE DEAD OIL STN.

LS: CRIMY DNS TO DRK GRAY FN XTLM, VRY FOS (CORALS), WELL CMNTD, OCC PP POR, SL SHO DRK BRN DEAD OIL STN. NO ODOR, NO FLOR.

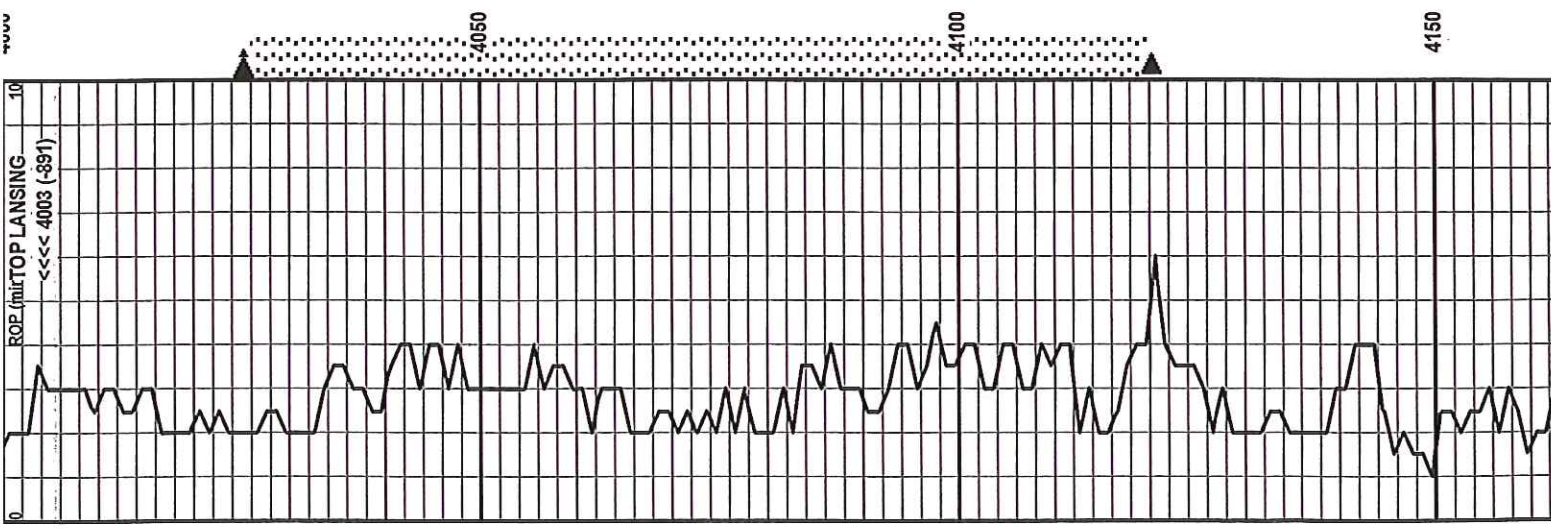
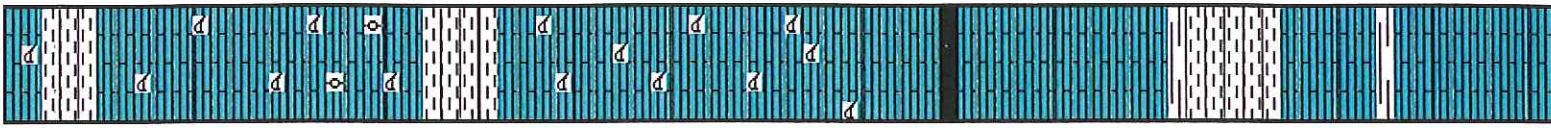
LS: CRIMY, DNSE, FN XTLM, WELL CMNTD, SPY DRK BRN O STN WNO FLOR OR ODOR. STN APPEARS TO BE DEAD.

LS: CRIMY TO LT TAN, FN XTLM, OCC PP VUGGY POR, FR SO DEAD OIL

SH: DRK GRAY

LS: CRIM TO LT GRAY, VFN XTLM, DENSE, OCC TRNSLCNT WH CHRT. NVP, NS

LS: CRIMY TO LT GRAY, VFN XTLM, DNSE, NVP, NS



VIS: 50 WFT. 9.3

LS: CRM TO LT GRY, VFN XTLN, DENSE, OCC
TRANSLNT WH CHRT. NVP, NS

LS: CRMY TO LT GRY, VFN XTLN, DNSE, NVP, NS

LS: CRMY TO LT GRY, VFN XTLN, DNSE, NVP, NS

LS: CRMY TO LT GRY, DNS, NVP, NS

SHALE: BLACK, CARB

LS: LT TAN, FN XTLN, FOS, PR INXL PP POR, SS
DRK BRN DEAD OIL. NO ODOR, NO FLOR.

LS: CRMY TO GRY, FN XTLN, OCC FOS, P INT
XTLN POR, SPOTTY DRK BRN DEAD OIL STN, NO
ODOR, NO FLOR.

LS: CRMY TO GRY, MICR XTLN, DNSE, NVP, NS

LS: CRMY TO GRY, FN XTLN, DNSE, SL FOS, NVP,
SPTY STN DRK TO BLK DEAD OIL STN. NO
FLOUR, NO ODOR

LS: WH TO LT TAN, ARG, NVP, NS

LS: WH TO TAN, MED TO CRS XLN, EXC
OONOLDIC POR. APPEARS TO BE VERY LOW
PERMI. NO STN, ODOR, OR FLOR.

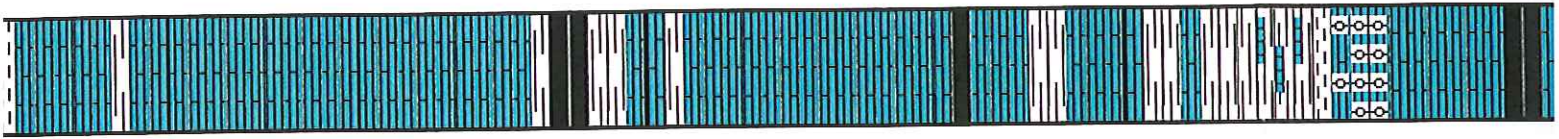
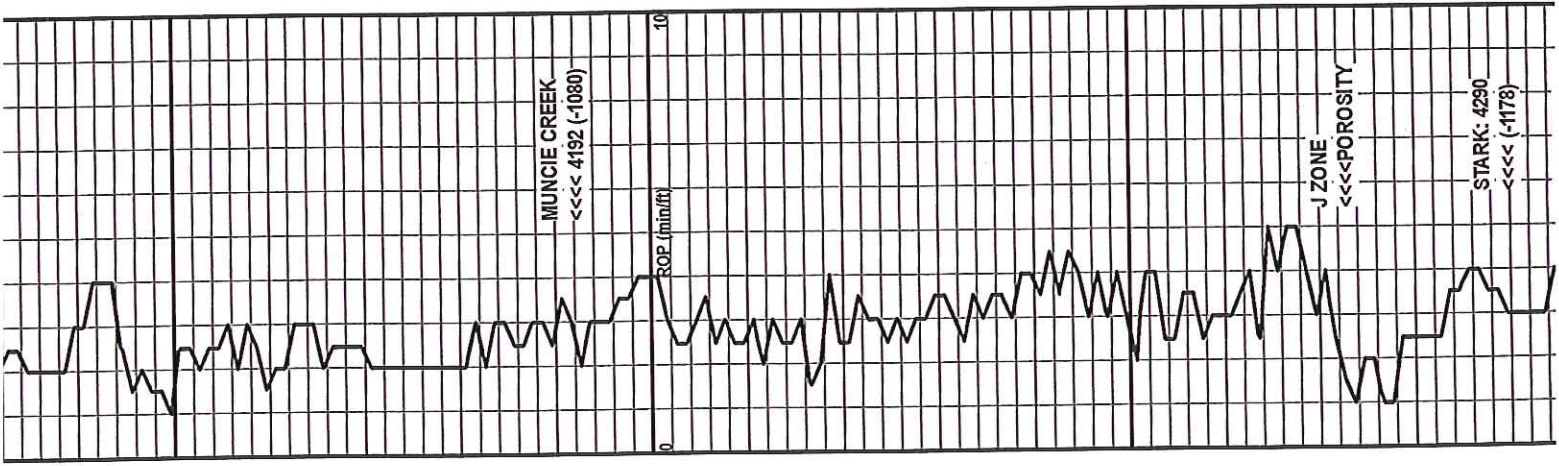
LS: CRM TO LT TAN, FN XTLN, OCC FOS.

SHALE: BLACK

4150

4200

4250



LS: CRM TO LT GRY, VFN XTLN, DENSE, OCC
TRANSLNT WH CHRT. NVP, NS

LS: CRMY TO LT GRY, VFN XTLN, DNSE, NVP, NS

LS: CRMY TO LT GRY, VFN XTLN, DNSE, NVP, NS

LS: CRMY TO LT GRY, DNS, NVP, NS

SHALE: BLACK, CARB

LS: LT TAN, FN XTLN, FOS, PR INXL PP POR, SS
DRK BRN DEAD OIL. NO ODOR, NO FLOR.

LS: CRMY TO GRY, FN XTLN, OCC FOS, P INT
XTLN POR, SPOTTY DRK BRN DEAD OIL STN, NO
ODOR, NO FLOR.

LS: CRMY TO GRY, MICR XTLN, DNSE, NVP, NS

LS: CRMY TO GRY, FN XTLN, DNSE, SL FOS, NVP,
SPTY STN DRK TO BLK DEAD OIL STN. NO
FLOUR, NO ODOR

LS: WH TO LT TAN, ARG, NVP, NS

LS: WH TO TAN, MED TO CRS XLN, EXC
OONOLDIC POR. APPEARS TO BE VERY LOW
PERMI. NO STN, ODOR, OR FLOR.

LS: CRM TO LT TAN, FN XTLN, OCC FOS.

SHALE: BLACK

LS: WH TO TAN, MED TO CRS XLN, EXC OOMOLDIC POR. APPEARS TO BE VERY LOW PERM. NO STN, ODOR, OR FLOR.

LS: CRM TO LT TAN, FN XTLN, OCC FOS.

SHALE: BLACK

LS: CRMY TO LT TAN, MICRO XTLN, OCC FOS IN WELL. CMNTD MATRX, NVP, NS
2 PIECES W POS LT BRN LOS

LS: CRMY TO LT TAN, DENSE, MICRO XTLN, OCC FOS IN WELL. CMNTD MATRX, NVP, NS

LS: AAB

SHALE: BLACK

LS: CRM TO LT TAN, DNSE, OCC FOS IN WELL. CMNTD MATRX, OCC S VRY DRK BRN DEAD OIL STN, NO FLOR, NO ODOR, NO CUT.

LS: CRM TO LT TAN, DNSE AAB

LS: AAB. NVP, NS

LS: AAB, NVP, NS

SH: BLK, CARB

SH: DRK GRY, BLKY

SH: DRK GRY, LS STRINGERS

SH: LT TO DRK GRY

LS: CRMY WH TO LT GRY, DNSE, NVP, NS

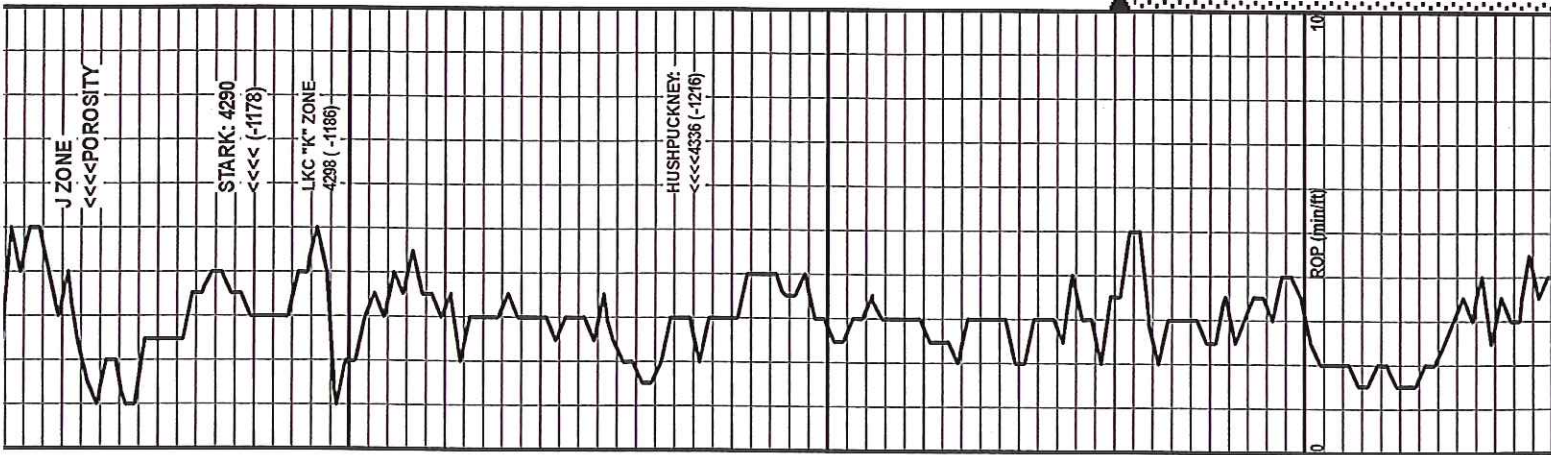
DST #2 4332-4447
MARMATON A & B ZONES
15-30-30-90
IF: BOB 1 MIN
RETURN: BOB 8 MIN
FF: BOB 1 MIN



4300

4350

4400



DST #2: 4382-4447
 MARMATON A & B ZONES
 15-30-30-99
 IF: BOB 1 MIN
 RETURN: BOB 8 MIN
 FF: BOB 1 MIN
 RETURN: BOB 8 MIN
 RECOVERY:
 2294' GCO
 248' MCGO (10% MUD)
 FFP: 394-916
 FFP: 698-904
 ISIP: 1224
 FSP: 1286
 BHT: 120 F
 OIL GRAVITY: 31

SH: DRK GRY, LS STRINGERS

SH: LT TO DRK GRY

LS: CRMY WH TO LT GRY, DNSE, NVP, NS

LS: CRM TO LT TAN, FN XTLN, NVP, NS

LS: LT TAN TO WH, CRSEXTLN, OOLITIC WICOARSE SPARRY CALCITE. VRY PRLY CMNTD, RARE CMNTD CLUSTERS WEXC INTRGRN POR, EXC VIS PERM. MOSTLY GROUND FREE OIDS. FEW CLUSTERS W NICE LT BRN LOS, GD YLW FLOR, FNT ODOR, FLASH CUT WINSTANT RING. NOTE: VRY FEW CMNTD CLUSTERS. MOST ROCK GROUND INTO LOOSE OIDS.

LS: LT GRY TO LT TAN, CRS XTLN, OOLITIC W SPARRY CALCITE AAB, PR VIS POR, SM LT BRN LIVE OIL STN AAB, FR YLW FLOR, MLKY YLW CUT. VRY FEW PCS WSH LIVE OIL.

SH: GRY, FISSILE

LS: CRMY TO LT TAN, FN TO MED GRN, COUPLE PIECES W PR VUG POR, VRY SPTY LIVE BRN OIL STN. FNT YLW FLOR, SLW STRIMING YLW CUT, VRY LITTLE VIS POR.

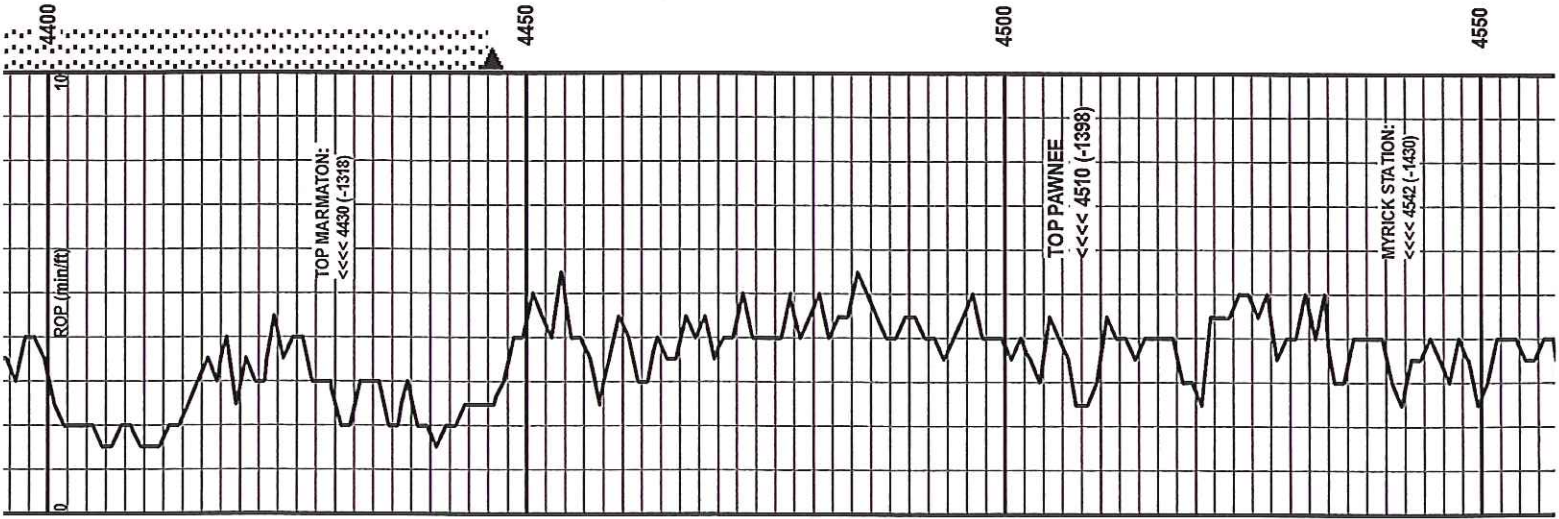
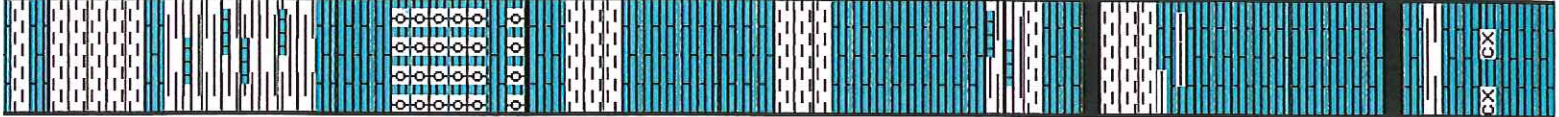
SH: BLK, CARB

LS: CRMY TO LT TAN, MICRO XTLN TO FN GRN XTLN, CHLKY, NVP, NW

LS: LT GRY TO LT TAN, FN XTLN, OCC FOS, NVP, NS

SH: BLACK, CARB

LS: WH TO LT TAN, FN XTLN, FOS, OCC OIDS, 2 PIECES W FR VIS POR, GD S LT BRN LIVE OIL, GD FLOR, GOOD CUT.



4440

4450

4500

4550

ROP (min/ft)

TOP MARMATON:
 <<<< 4430 (-1318)

TOP PAWNEE
 <<<< 4510 (-1398)

MYRICK STATION:
 <<<< 4542 (-1430)

LS: LT GRY TO LT TAN, FN XT LN, OCC FOS, NVP, NS

SH: BLACK, CARB

LS: WH TO LT TAN, FN XT LN, FOS, OCC OODS, 2 PIECES WFR VIS POR, GD S LT BRN LIVE OIL, GD FLOR, GOOD CUT.

SH: BLACK, CARB

LS: CRM TO TAN, V FN XT LN, OCC FOS, DNSE, NVP, NS

LS: AAB

SHALE: BLACK, CARB

LS: CRMY TO LT TAN, FN XT LN, OOL/W FAIR OOL POR, FS DRK BRN DEAD OIL STN. NO FLOR, NO ODOR.

LS: CRM, LT TAN, FN XT LN, DNSE NVP, NS

SH: DRK GRY

LS: GRY TO LT TAN, V FN TO CRS XT LN, OCC OODS, FEW PCS W LOS, YLW FLOR, STRIMING YLW MILKY CUT

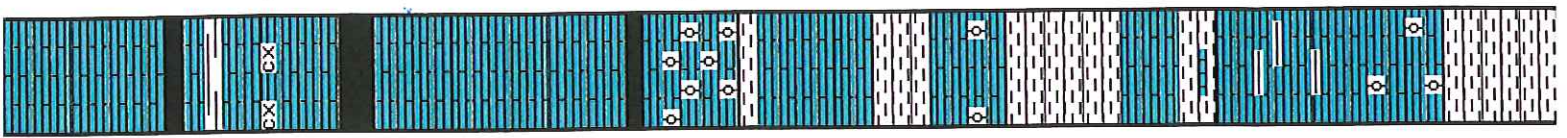
SH: DRK GRY

LS: CRM TO LT TAN, FN TO CRS XT LN, OCC OODS, FEW PCS W SS LIVE OIL AAB.

LS: CRM TO LT TAN, DNSE, ARG, NVP, NS

LS: GRY TO LT TAN, FEW PCS CRS XT LN, OCC OODS, DNSE, FEW PCS W VIS PP XT LN POR XT LN, VRY SL LT BRN LIVE OIL W SOME FLOR, STN, CUT

SH: DRK GRY TO BLK



4550

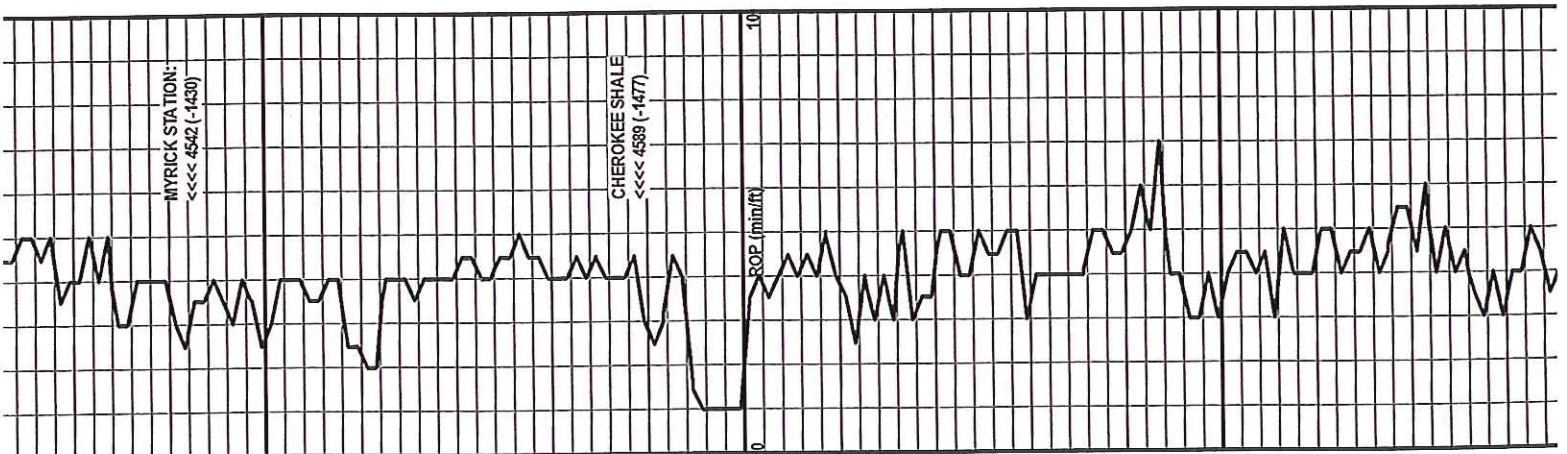
4600

4650

MYRICK STATION:
←←← 4542 (-1430)

CHEROKEE SHALE
←←← 4589 (-1477)

ROP (min/ft)



LS: CRM TO LT TAN, DNSE, ARG, NVP, NS

LS: GRY TO LT TAN, FEW PCS CRS XTLN, OCC OOIDS, DNSE. FEW PCS WVIS PP XTLN POR XTLN, VRY SL SH LT BRN LIVE OIL W SOME FLOR, STN, CUT

SH: DRK GRY TO BLK

LS: CRM TO LT TAN, FN XTLN, FOS, OCC INTR XTLN AND FIN PNT YUGGY POR, FR DRK BRN DEAD OIL STN. NO FLOR, NO ODOR.

LS: CRM TO LT TAN, MICRO XTLN, DNSE, NVP, NS

SH: GRY TO VAR COL, SILTY, FEW FINE SD GRNS

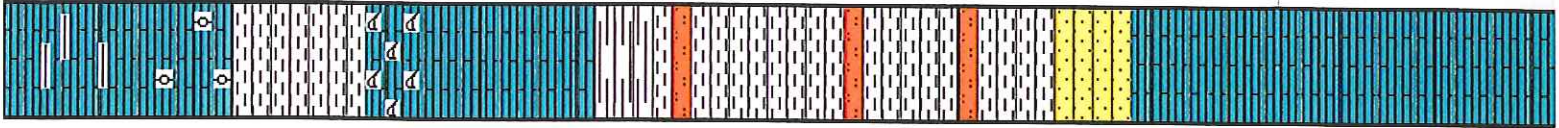
SH: VAR COL, OCC SILTSTONE

SH: VAR COL, OCC SILTSTONE

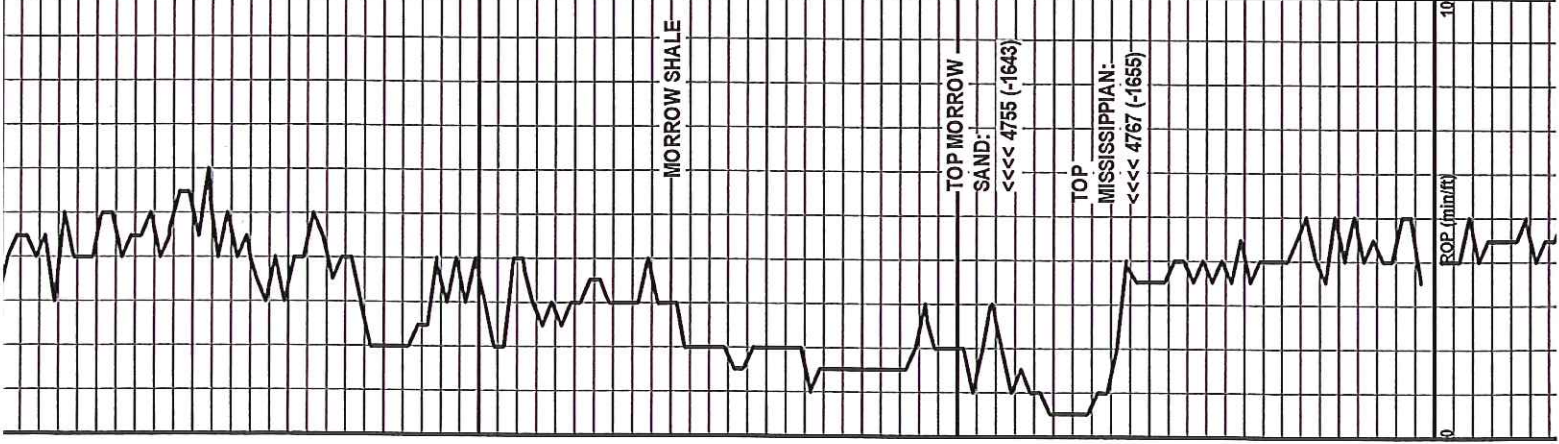
SS: WHITE, MED GRN, SUB ROUNDED, WELL SORTED, VRY WELL CMNTD, NS

LS: WHITE TO LT TAN, MICRO XTLN, VRY CLN, DNSE, NVP, NS.

LS: AAB NO CHERT, NO OOIDS



4700 4750 4800



TD: 4860 RTD, 4862 LTD

LS: AAB, NO CHERT, NO OOIDS

LS: AAB

DUE TO STRUCTURAL
POSITION AND DST
RESULTS, IT WAS
RECOMMENDED THAT
PRODUCTION CASING BE
SET ON THIS WELL.



4850

4900

4950

