

# KIM B. SHOEMAKER

CONSULTING GEOLOGIST

316-684-9709 \* WICHITA, KS

## GEOLOGIST'S REPORT

DRILLING TIME AND SAMPLE LOG

COMPANY L. D. DRILLING, INC.

LEASE # 1-27 A/T FARMS, INC.

FIELD WILDCAT

LOCATION 358' ENL & 1812' EWL

SEC 27 TWSP 18s RGE 21W

COUNTY NESS STATE KANSAS

CONTRACTOR L. D. DRILLING, INC.

SPUD 12-20-13 COMP 12-31-13

RTD 4219 LTD -

MUD UP 3386' TYPE MUD CHEMICAL

ELEVATIONS

KB 2108

DF \_\_\_\_\_

GL 2103

Measurements Are All From 2108 KB

CASING

SURFACE 8 5/8" @ 1326'

PRODUCTION \_\_\_\_\_

ELECTRICAL SURVEYS

None

SAMPLES SAVED FROM 3500 TO 4219

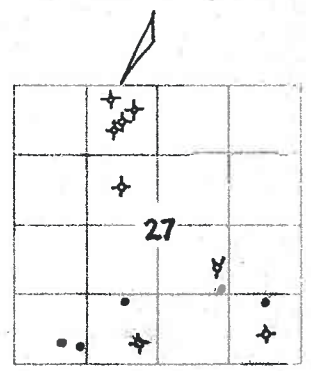
DRILLING TIME KEPT FROM 3900 TO 4219

SAMPLES EXAMINED FROM 3500 TO 4219

GEOLOGICAL SUPERVISION FROM 3800 TO 4219

GEOLOGIST ON WELL KIM B. SHOEMAKER

FORMATION TOPS	LOG	SAMPLES
ANHYDRITE		1335 + 773
B/ANH		1370 + 738
HEEBNER		3569 - 1461
LANSING		3614 - 1506
B/KC		3904 - 1796
PAWNEE		4012 - 1904
FORT SCOTT		4083 - 1975
CHEROKEE		4101 - 1993
MISSISSIPPI		4193 - 2085
MISS. OSAGE		4208 - 2100
RTD		4219 - 2111



REMARKS

API: IS 135-25711

12-20-13 SPUD  
12-21 @ 600'  
12-22 @ 1335'  
12-23 @ 2110 Shot down 7:00PM @ 2529'  
12-24 @ 2529'  
12-25 CHRISTMAS  
12-26  
12-27 @ 2519'  
12-28 @ 3075'  
12-29 @ 3765'  
12-30 @ 4200'  
12-31 @ 4219'

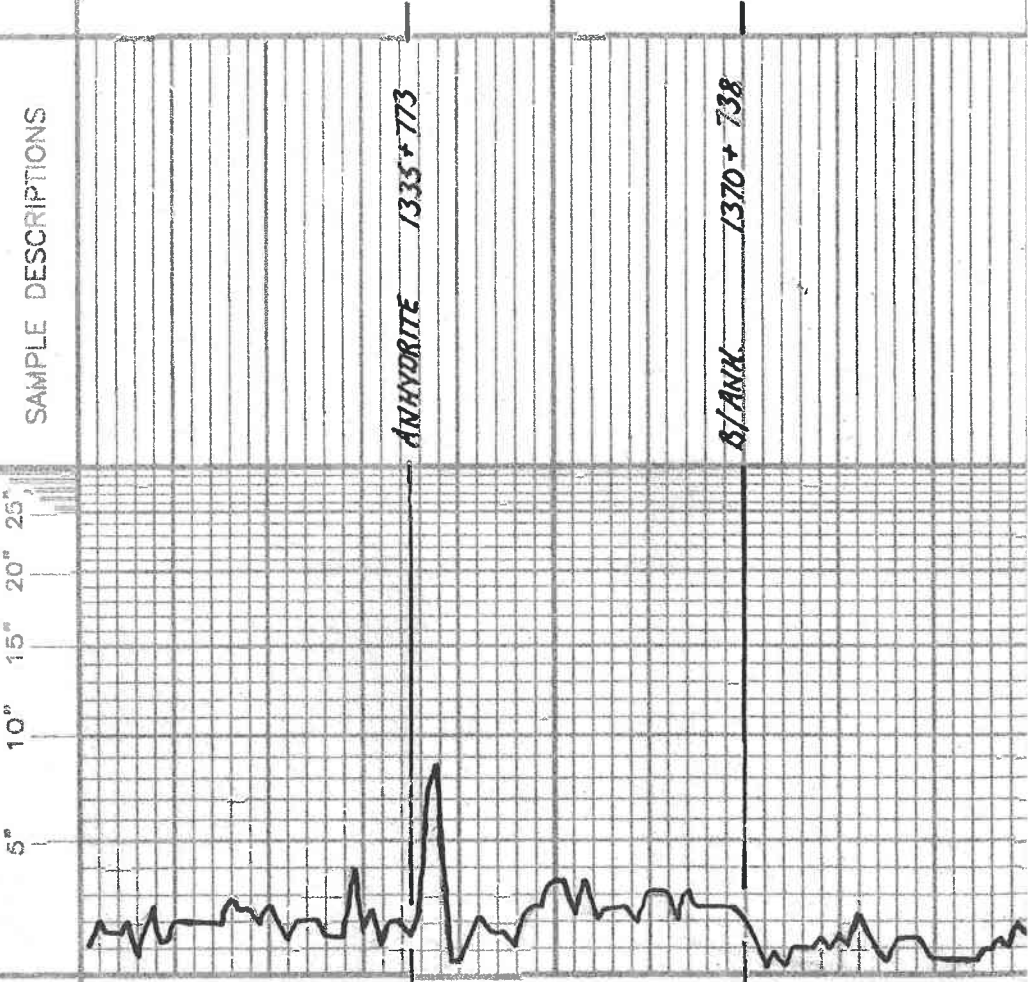
LEGEND

- Anhydrite
- Salt
- Sandstone
- Shale
- Carb sh
- Limestone
- Ool. Lime
- Chert
- Dolomite

SHOE01-06

DRILLING TIME IN MINUTES PER FOOT  
Rate of Penetration Increases

DEPTH  
1300



REMARKS

SAMPLE DESCRIPTIONS

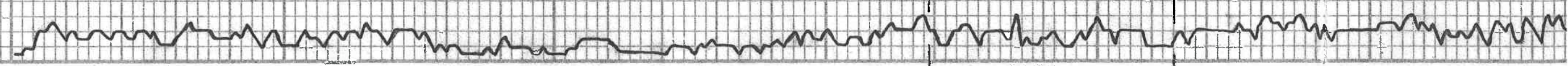
LITHOLOGY

1400

3400

3500

3600



Samples are lagged

ES. To VFrank. Sinc. VSI. Freq.

ES. To VFrank. Sinc.

ES. wt. ch. log.

ES. To. Lib. Dis.

HEBNER 3569-1461  
SB REC LOG.

Sh. 616m

ES. To. and. SIA

Sh. 614m

LANSING 3614-1506

ES. wt. SB. Sinc. SIA. Call.

ES. To. Dis.

ES. 025.

Sh. 614m

ES. To. S. SIA. 614m

Sh. 025m

ES. To. wt. Sinc. SIA. Call.

Sh. 025m

ES. wt. SIA

3700

3800

3900

4000

65. T. J. Sh. For. SIA

A. M. G.

65. W. Sh. For. Ch. L.

A. M. G.

65. W. Sh. For. SIA

65. W. Ch. L.

65. Ch. L. Dr. SIA

Sh. G.

65. B. Sh. For.

Sh. G.

65. T. W. Sh. For. SIA

Sh. A. F. G.

65. T. Sh. For.

Sh. G.

65. T. SIA

A. M. G.

65. W. Sh. For. SIA

Sh. G.

65. T. occ. gl. acc. p.

65. W. Ch. L.

Sh. G.

65. B. Sh. For.

Sh. G.

65. T. Sh. For. SIA

65. Ch. L. SIA

Sh. G.

65. Ch. L. B. SIA

65. W. Sh. For. SIA

B/KC 3904-1796

Sh. G.

65. T. R. SIA

Sh. G.

Sh. G. B.

65. T. B. Sh. For. SIA

Sh. G.

65. B. Sh. For. SIA

Sh. G.

65. W. Sh. For. of R. Sh. SIA

65. T. W. Sh. For. SIA

Sh. G.

PAWNEE 4012-1904

65. W. Ch. L.

A. M. G.

A Dwyer  
 65. To wt. Sil. Gully.  
 12. To 65g. VSILO  
 45. To Bl. g. Pkt.  
 SA. Blk. Crab.

**FORT SCOTT 4083-1975**

15. To 65g. VSILO

45. To g. Dia.

**MEMPHIS 4101-1993**

55. To 65g. VSILO

15. To Sil.

SA. RLLIG  
 Clonyg. Sdy. Bl. sh. Co. G. Sh. Sil. P.

SA. Bl. G. Sh. Sdy. sh. M. G. Sh.

A. P. Multicolored Sil. Pass.  
 A. Sil. Pass.

Sh. Bl. Yellow Sdy. G. Sh.

A. wt. Sil. Pass.

15. To G. Yellow Sil. Pass.

Sh. Bl. Yellow G. Sh.

**MISSISSIPPI WARSAW PERO**

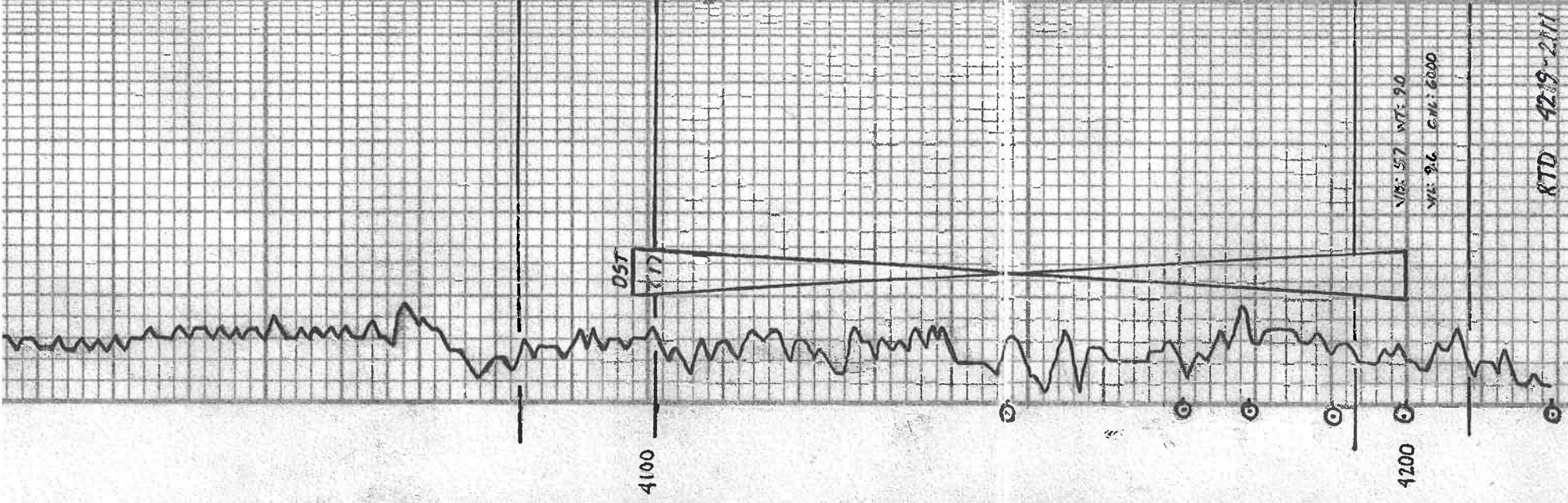
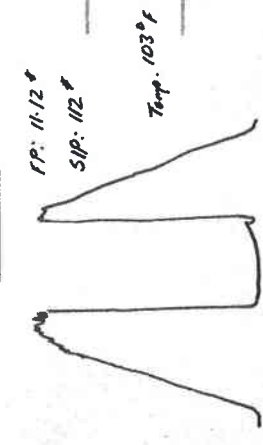
D. wt. V. Fresh. Sdy. G. Sh. VSILO Pass.

**MISS. OSAGE 4208-2100**

A. wt. Fresh. Col.

A. wt. To Y. Sil. Pass. Pass. NS. No. 1000.

DST (D) 4098-4200  
 1ST OPEN: Surface Blow Diod 9 MIN.  
 2ND OPEN: 30-30  
 Rec. 10' Mud



VRS 57 VTS 90  
 VRS 26 G.M. 2000

RTD 4219-2111