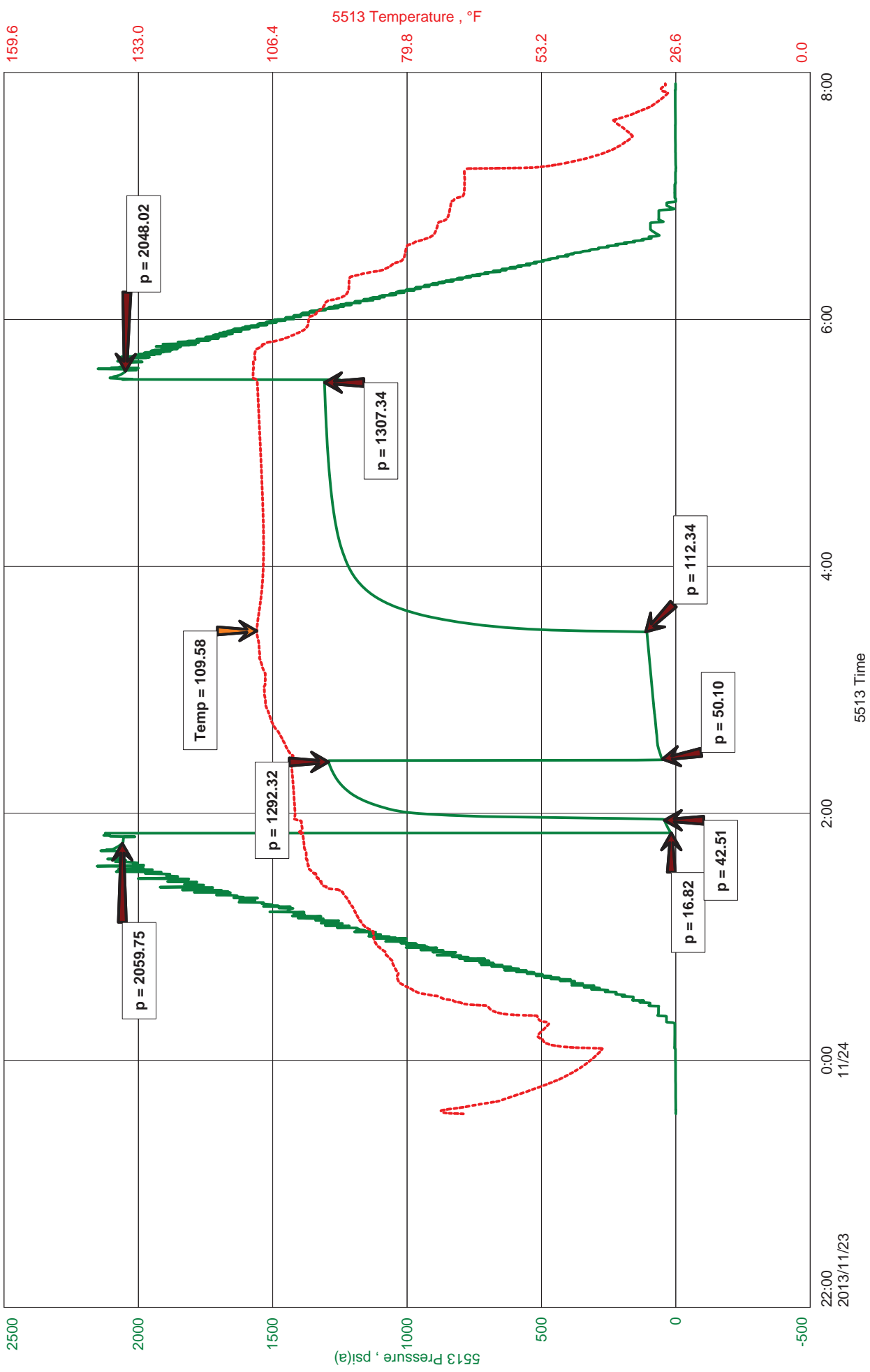


Mull Drilling Company, Inc  
DST #3 Mississippi 4242-4337  
Start Test Date: 2013/11/23  
Final Test Date: 2013/11/24

Erb #1-13  
Formation: Mississippi  
Job Number: K060

# Erb #1-13





**JASON MCLEMORE**

**CELL # 620-6170527**

**General Information**

<b>Company Name</b>	Mull Drilling Company, Inc	<b>Job Number</b>	K060
<b>Contact</b>	Mark Shreve	<b>Representative</b>	Jason McLemore
<b>Well Name</b>	Erb #1-13	<b>Well Operator</b>	Mull Drilling Company, Inc
<b>Unique Well ID</b>	DST #3 Mississippi 4242-4337	<b>Prepared By</b>	Jason McLemore
<b>Surface Location</b>	13-19-23-Ness	<b>Qualified By</b>	Kevin Kessler
<b>Field</b>	Wildcat	<b>Test Unit</b>	
<b>Well Type</b>	Vertical		

**Test Information**

<b>Test Type</b>	Drill Stem Test	<b>Representative</b>	Jason McLemore
<b>Formation</b>	Mississippi	<b>Well Operator</b>	Mull Drilling Company, Inc
<b>Well Fluid Type</b>	01 Oil	<b>Report Date</b>	2013/11/24
<b>Test Purpose (AEUB)</b>	Initial Test	<b>Prepared By</b>	Jason McLemore
<b>Start Test Date</b>	2013/11/23	<b>Start Test Time</b>	23:34:00
<b>Final Test Date</b>	2013/11/24	<b>Final Test Time</b>	08:05:00

**Test Results**

**RECOVERED:**

25	Free Oil
130	HOCM, 50% Oil, 50%Mud
60	OCM, 20%Oil, 80% Mud
215	Total Fluid

**Tool Sample: OCM, 20%Oil, 80% Mud**  
**Gravity: 35**



**DIAMOND TESTING**  
P.O. Box 157  
**HOISINGTON, KANSAS 67544**  
(800) 542-7313  
**DRILL-STEM TEST TICKET**  
FILE: \_\_\_\_\_

TIME ON: 11:34 PM  
TIME OFF: 8:05 AM

Company Mull Drilling Company, Inc Lease & Well No. Erb #1-13  
Contractor WW #10 Charge to Mull Drilling Company Inc  
Elevation KB 2209 Formation Mississippi Effective Pay \_\_\_\_\_ Ft. Ticket No. K060  
Date 11-23-13 Sec. 13 Twp. \_\_\_\_\_ 19 S Range \_\_\_\_\_ 23 W County \_\_\_\_\_ Ness \_\_\_\_\_ State KANSAS  
Test Approved By Kevin Kessler Diamond Representative Jason McLemore

Formation Test No. 3 Interval Tested from 4242 ft. to 4337 ft. Total Depth 4337 ft.  
Packer Depth 4237 ft. Size 6 3/4 in. Packer depth \_\_\_\_\_ ft. Size 6 3/4 in.  
Packer Depth 4242 ft. Size 6 3/4 in. Packer depth \_\_\_\_\_ ft. Size 6 3/4 in.

Depth of Selective Zone Set \_\_\_\_\_

Top Recorder Depth (Inside) 4223 ft. Recorder Number 5513 Cap. 5000 P.S.I.  
Bottom Recorder Depth (Outside) 4224 ft. Recorder Number 5588 Cap. 6000 P.S.I.  
Below Straddle Recorder Depth \_\_\_\_\_ ft. Recorder Number \_\_\_\_\_ Cap. \_\_\_\_\_ P.S.I.

Mud Type Chemical Viscosity 50 Drill Collar Length 124 ft. I.D. 2 1/4 in.  
Weight 9.6 Water Loss 8.0 cc. Weight Pipe Length 0 ft. I.D. 2 7/8 in.  
Chlorides 5500 P.P.M. Drill Pipe Length 4085 ft. I.D. 3 1/2 in.  
Jars: Make STERLING Serial Number 7 Test Tool Length 33 ft. Tool Size 3 1/2-IF in.  
Did Well Flow? NO Reversed Out No Anchor Length 95 ft. Size 4 1/2-FH in.  
Main Hole Size 7 7/8 Tool Joint Size 4 1/2 XH in. 62' DP in Anchor Surface Choke Size 1 in. Bottom Choke Size 5/8 in.

Blow: 1st Open: Fair Blow, Built to 3", No Blowback  
2nd Open: Fair Blow, BOB in 335 Min., Surface Blowback For 20 Min.

Recovered 25 ft. of Free Oil  
Recovered 130 ft. of HOCM, 50% Oil, 50%M  
Recovered 60 ft. of OCM, 20%Oil, 80% Mud  
Recovered 215 ft. of Total Fluid

Recovered _____ ft. of <u>Gravity: 35</u>	Price Job
Recovered _____ ft. of _____	Other Charges
Remarks: <u>Tool Sample: OCM, 20% Oil, 80% Mud</u>	Insurance
	Total

Time Set Packer(s) 2:01 AM A.M. P.M. Time Started Off Bottom 5:36 AM A.M. P.M. Maximum Temperature 110

Initial Hydrostatic Pressure..... (A) 2060 P.S.I.  
Initial Flow Period..... Minutes 5 (B) 17 P.S.I. to (C) 43 P.S.I.  
Initial Closed In Period..... Minutes 30 (D) 1292 P.S.I.  
Final Flow Period..... Minutes 60 (E) 50 P.S.I. to (F) 112 P.S.I.  
Final Closed In Period..... Minutes 120 (G) 1307 P.S.I.  
Final Hydrostatic Pressure..... (H) 2048 P.S.I.

Diamond Testing shall not be liable for damages of any kind to the property or personnel of the one for whom a test is made or for any loss suffered or sustained, directly or indirectly, through the use of its equipment, or its statement or opinion concerning the result of any test. Tools lost or damaged in the hole shall be paid for at cost by the party for whom the test is made.