



**TRILOBITE TESTING, INC.**

# DRILL STEM TEST REPORT

Woolsey Operating Co LLC

**16 35s 12w Barber**

125 N Market Ste 1000  
Wichita KS 67202-1729

**OHLSON # 1**

Job Ticket: 55794

**DST#: 2**

ATTN: Bill Klaver

Test Start: 2013.11.27 @ 12:00:00

## GENERAL INFORMATION:

Formation: **Mississippi**

Deviated: No Whipstock: 1403.00 ft (KB)

Time Tool Opened: 13:58:30

Time Test Ended: 22:02:00

Test Type: Conventional Bottom Hole (Reset)

Tester: Jim Svaty

Unit No: 54

**Interval: 4760.00 ft (KB) To 4924.00 ft (KB) (TVD)**

Reference Elevations: 1403.00 ft (KB)

Total Depth: 4924.00 ft (KB) (TVD)

1389.00 ft (CF)

Hole Diameter: 7.88 inches Hole Condition: Fair

KB to GR/CF: 14.00 ft

**Serial #: 8289 Outside**

Press @ Run Depth: 191.24 psig @ 4767.00 ft (KB)

Capacity: 8000.00 psig

Start Date: 2013.11.27 End Date: 2013.11.27

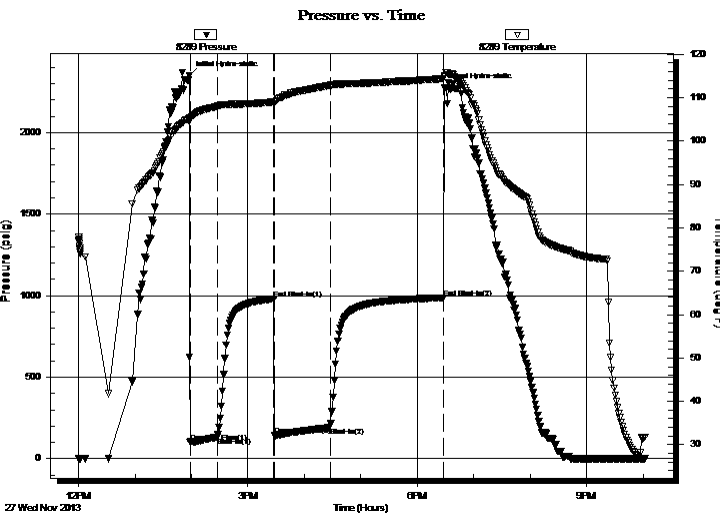
Last Calib.: 2013.11.27

Start Time: 12:00:02 End Time: 22:02:15

Time On Btm: 2013.11.27 @ 13:57:45

Time Off Btm: 2013.11.27 @ 18:28:45

**TEST COMMENT:** 30-IFP- BOB in 4 min.  
60-ISIP- No Blow  
60-FFP- BOB in 11min.  
120-FSIP- Surface Blow Building to 1/2in. in 10min. Died Back in 22min.



## PRESSURE SUMMARY

| Time (Min.) | Pressure (psig) | Temp (deg F) | Annotation           |
|-------------|-----------------|--------------|----------------------|
| 0           | 2351.35         | 105.29       | Initial Hydro-static |
| 1           | 100.66          | 105.20       | Open To Flow (1)     |
| 30          | 133.12          | 108.02       | Shut-In(1)           |
| 90          | 980.34          | 108.97       | End Shut-In(1)       |
| 91          | 145.22          | 108.65       | Open To Flow (2)     |
| 150         | 191.24          | 112.82       | Shut-In(2)           |
| 271         | 986.13          | 114.38       | End Shut-In(2)       |
| 271         | 2273.41         | 114.88       | Final Hydro-static   |

## Recovery

| Length (ft) | Description        | Volume (bbl) |
|-------------|--------------------|--------------|
| 120.00      | OMCW 3%o 40%m 57%w | 0.59         |
| 124.00      | OSM 1%0 99%m       | 1.21         |
| 112.00      | Mud 100%           | 1.57         |
| 0.00        | 508 GIP            | 0.00         |
|             |                    |              |
|             |                    |              |

\* Recovery from multiple tests

## Gas Rates

|  | Choke (inches) | Pressure (psig) | Gas Rate (Mcf/d) |
|--|----------------|-----------------|------------------|
|  |                |                 |                  |





**TRILOBITE  
TESTING, INC.**

# DRILL STEM TEST REPORT

**FLUID SUMMARY**

Woolsey Operating Co LLC

**16 35s 12w Barber**

125 N Market Ste 1000  
Wichita KS 67202-1729

**OHLSON # 1**

Job Ticket: 55794

**DST#: 2**

ATTN: Bill Klaver

Test Start: 2013.11.27 @ 12:00:00

## Mud and Cushion Information

Mud Type: Gel Chem

Cushion Type:

Oil API:

deg API

Mud Weight: 9.00 lb/gal

Cushion Length:

ft

Water Salinity:

60000 ppm

Viscosity: 58.00 sec/qt

Cushion Volume:

bbbl

Water Loss: 8.97 in<sup>3</sup>

Gas Cushion Type:

Resistivity: ohm.m

Gas Cushion Pressure:

psig

Salinity: 8000.00 ppm

Filter Cake: 2.00 inches

## Recovery Information

Recovery Table

| Length<br>ft | Description        | Volume<br>bbbl |
|--------------|--------------------|----------------|
| 120.00       | OMCW 3%o 40%m 57%w | 0.590          |
| 124.00       | OSM 1%0 99%m       | 1.211          |
| 112.00       | Mud 100%           | 1.571          |
| 0.00         | 508 GIP            | 0.000          |

Total Length: 356.00 ft

Total Volume: 3.372 bbl

Num Fluid Samples: 0

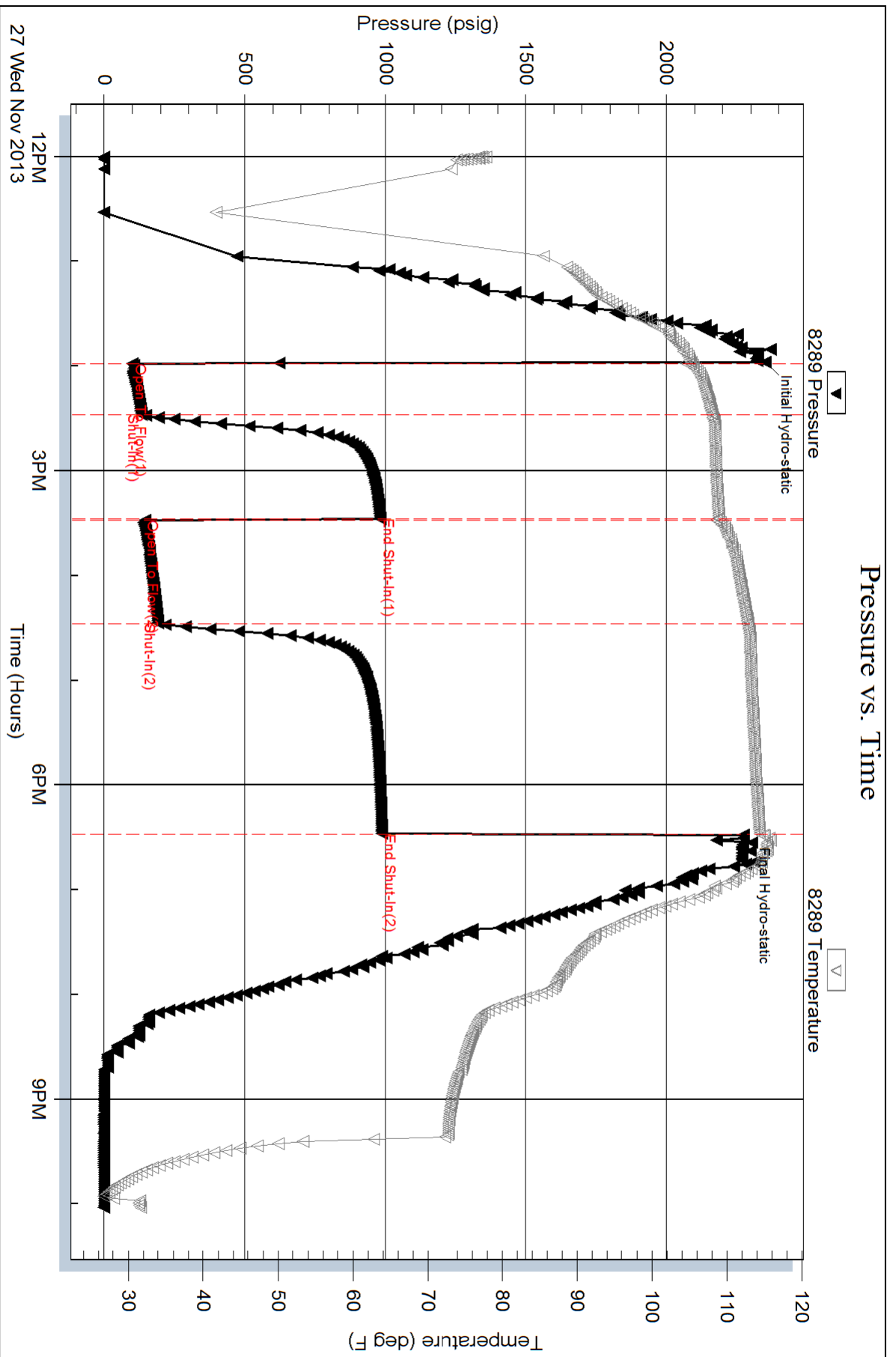
Num Gas Bombs: 0

Serial #:

Laboratory Name:

Laboratory Location:

Recovery Comments: .280 @ 32



Serial #: 8789

Inside

Woodsey Operating Co LLC

OHLSON # 1

DST Test Number: 2

