



TRILOBITE TESTING, INC

DRILL STEM TEST REPORT

Woolsey Operating Co LLC

16 35s 12w Barber

125 N Market Ste 1000
Wichita KS 67202-1729

OHLSON # 1

Job Ticket: 55795

DST#: 3

ATTN: Bill Klaver

Test Start: 2013.11.30 @ 04:44:00

GENERAL INFORMATION:

Formation: **Simpson F Dolomite**

Deviated: No Whipstock: 1403.00 ft (KB)

Time Tool Opened: 07:21:30

Time Test Ended: 13:31:00

Test Type: Conventional Bottom Hole (Reset)

Tester: Jim Svaty

Unit No: 54

Interval: 5362.00 ft (KB) To 5386.00 ft (KB) (TVD)

Reference Elevations: 1403.00 ft (KB)

Total Depth: 5386.00 ft (KB) (TVD)

1389.00 ft (CF)

Hole Diameter: 7.88 inches Hole Condition: Fair

KB to GR/CF: 14.00 ft

Serial #: 8289 Outside

Press@RunDepth: 33.66 psig @ 5363.00 ft (KB)

Capacity: 8000.00 psig

Start Date: 2013.11.30

End Date: 2013.11.30

Last Calib.: 2013.11.30

Start Time: 04:44:02

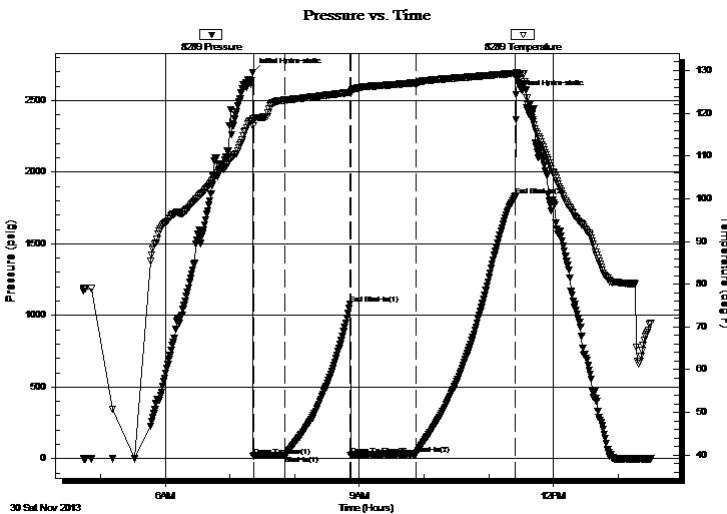
End Time: 13:31:00

Time On Btm: 2013.11.30 @ 07:21:15

Time Off Btm: 2013.11.30 @ 11:25:30

TEST COMMENT: 30-IFP- Surface Blow Building to 8in.
60-ISIP- Surface Blow in 3 1/2 min. Building to 1/8in.
60-FFP- BOB in 30sec.
90-FSIP- No Blow

PRESSURE SUMMARY



Time (Min.)	Pressure (psig)	Temp (deg F)	Annotation
0	2695.70	118.71	Initial Hydro-static
1	17.35	117.16	Open To Flow (1)
30	25.26	123.07	Shut-In(1)
90	1080.27	124.90	End Shut-In(1)
91	26.28	124.58	Open To Flow (2)
151	33.66	127.09	Shut-In(2)
244	1831.81	129.32	End Shut-In(2)
245	2539.30	129.58	Final Hydro-static

Recovery

Length (ft)	Description	Volume (bbl)
40.00	OCM 15%o 85%m	0.20
0.00	957 GIP	0.00

* Recovery from multiple tests

Gas Rates

	Choke (inches)	Pressure (psig)	Gas Rate (Mcf/d)



**TRILOBITE
TESTING, INC**

DRILL STEM TEST REPORT

FLUID SUMMARY

Woolsey Operating Co LLC

16 35s 12w Barber

125 N Market Ste 1000
Wichita KS 67202-1729

OHLSON # 1

Job Ticket: 55795

DST#: 3

ATTN: Bill Klaver

Test Start: 2013.11.30 @ 04:44:00

Mud and Cushion Information

Mud Type: Gel Chem

Cushion Type:

Oil API:

deg API

Mud Weight: 9.00 lb/gal

Cushion Length:

ft

Water Salinity:

ppm

Viscosity: 58.00 sec/qt

Cushion Volume:

bbbl

Water Loss: 9.16 in³

Gas Cushion Type:

Resistivity: ohm.m

Gas Cushion Pressure:

psig

Salinity: 5000.00 ppm

Filter Cake: 8.00 inches

Recovery Information

Recovery Table

Length ft	Description	Volume bbl
40.00	OCM 15%o 85%m	0.197
0.00	957 GIP	0.000

Total Length: 40.00 ft Total Volume: 0.197 bbl

Num Fluid Samples: 0

Num Gas Bombs: 0

Serial #:

Laboratory Name:

Laboratory Location:

Recovery Comments:

Pressure vs. Time

