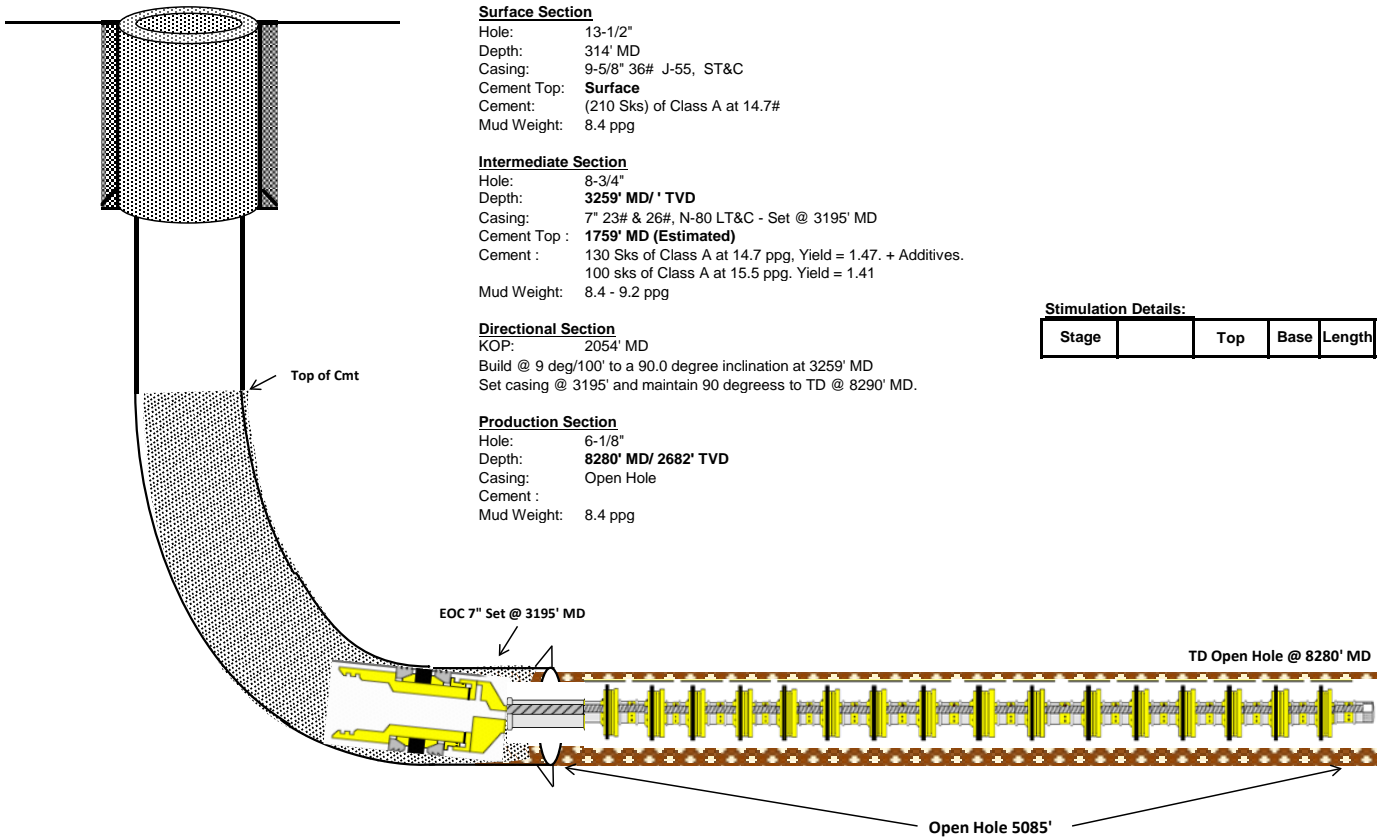


# Busenitz 13-14-12-14 H

As Drilled Wellbore Diagram - **NOT TO SCALE**

Updated: 3/19/2014  
 Location: Section 13 Township 25S Range 3E, Butler County, Kansas  
 Field: Matrix Re-Loaded  
 API Number: 15-015-23993-01-00 Elevations: GL 1280  
 Target Zone: Mississippian Lime KB 1300  
 SPUD Date: 10/16/2013 @ 0600 hrs KB 20  
 Mississippian 8290' / 2709' MD/TVD



### Surface Section

Hole: 13-1/2"  
 Depth: 314' MD  
 Casing: 9-5/8" 36# J-55, ST&C  
 Cement Top: **Surface**  
 Cement: (210 Sks) of Class A at 14.7#  
 Mud Weight: 8.4 ppg

### Intermediate Section

Hole: 8-3/4"  
 Depth: **3259' MD / TVD**  
 Casing: 7" 23# & 26#, N-80 LT&C - Set @ 3195' MD  
 Cement Top : **1759' MD (Estimated)**  
 Cement : 130 Sks of Class A at 14.7 ppg, Yield = 1.47. + Additives.  
 100 sks of Class A at 15.5 ppg, Yield = 1.41  
 Mud Weight: 8.4 - 9.2 ppg

### Directional Section

KOP: 2054' MD  
 Build @ 9 deg/100' to a 90.0 degree inclination at 3259' MD  
 Set casing @ 3195' and maintain 90 degrees to TD @ 8290' MD.

### Production Section

Hole: 6-1/8"  
 Depth: **8280' MD/ 2682' TVD**  
 Casing: Open Hole  
 Cement :  
 Mud Weight: 8.4 ppg

### Stimulation Details:

Stage	Top	Base	Length	Gap	Details