

# AUSTIN B. KLAUS

Cell 785.650.3629  
Work 785.483.3145  
Ext 225

PO BOX 352  
Russell, KS 67665

[austin.klaus@johnofarmer.com](mailto:austin.klaus@johnofarmer.com)

Scale 1:240 (5"=100') Imperial  
Measured Depth Log

Well Name: Bollig A #2  
Location: Graham County  
License Number: API # 15-065-23994-00-00  
Spud Date: 11/22/13  
Surface Coordinates: Section 17 - Township 10 South - Range 25 West  
703' FNL & 609' FWL  
Bottom Hole Coordinates: Vertical well with minimal deviation, same as above  
Ground Elevation (ft): 2,517' K.B. Elevation (ft): 2,525'  
Logged Interval (ft): 3,450' To: RTD Total Depth (ft): 4,070'  
Formation: Lansing  
Type of Drilling Fluid: Chemical (Morgan Mud)

Region: Kansas  
Drilling Completed: 11/29/13

Printed by STRIP.LOG from WellSight Systems 1-800-447-1534 [www.WellSight.com](http://www.WellSight.com)

### OPERATOR

Company: RL Investment, LLC  
 Address: 2698 JO Terrace Rd.  
 Hill City, Kansas 67642

### GEOLOGIST

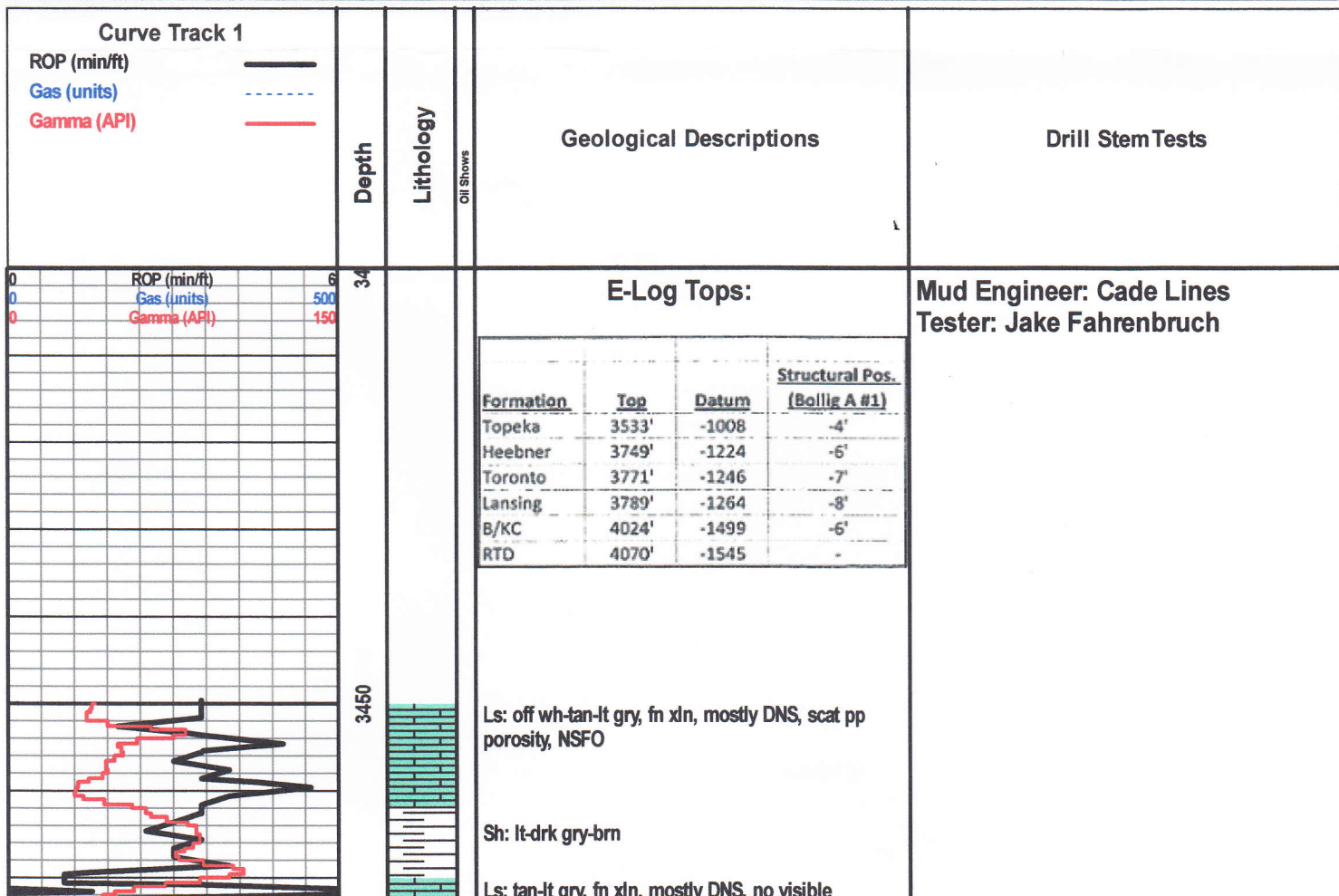
Name: Austin Klaus  
 Company: John O. Farmer, Inc.  
 Address: 370 W. Wichita Ave  
 Russell, KS 67665

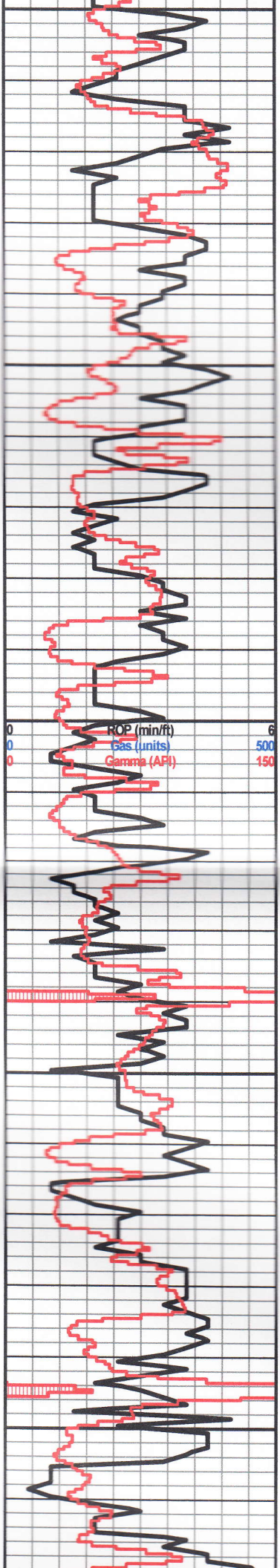
### ROCK TYPES

 Anhy  Bent  Brec  Cht	 Clyst  Coal  Congl  Dol	 Gyp  Igne  Lmst  Meta	 Mrlst  Salt  Shale  Shcol	 Shgy  Slstst  Ss  Till
---	---	---	---	--

### OTHER SYMBOLS

<b>POROSITY</b> <input type="checkbox"/> Earthy <input type="checkbox"/> Fenest <input type="checkbox"/> Fracture <input type="checkbox"/> Inter <input type="checkbox"/> Moldic <input type="checkbox"/> Organic <input type="checkbox"/> Pinpoint	<input type="checkbox"/> Vuggy <b>SORTING</b> <input type="checkbox"/> Well <input type="checkbox"/> Moderate <input type="checkbox"/> Poor	<b>ROUNDING</b> <input type="checkbox"/> Rounded <input type="checkbox"/> Subrnd <input type="checkbox"/> Subang <input type="checkbox"/> Angular <b>OIL SHOW</b> <input type="checkbox"/> Even	<input type="checkbox"/> Spotted <input type="checkbox"/> Ques <input type="checkbox"/> Dead <b>INTERVAL</b> <input type="checkbox"/> Core <input type="checkbox"/> Dst	<b>EVENT</b> <input type="checkbox"/> Rft <input type="checkbox"/> Sidewall
--	---	---	--	---





Sh: lt-gry tan, fn xln, scat pp porosity, NSFO, scat fossil

Sh: lt-drk gry-brn-rd

Ls: tan-lt gry, fn-sub xln, mostly DNS, sl fossil

Sh: lt gry-lt brn-rd, scat sltst: lt gry, vry fn grn

**Topeka 3524' (-999)**

Ls: tan-gry, fn xln, vry poor pp porosity, sl fsif, scat sh: drk gry

Ls: tan-lt gry, fn xln, sl fsif, poor pp porosity, sl chalky

Sh: lt-drk gry

Ls: tan-gry, fn xln, sl fsif, poor pp porosity, scat ool porosity, NSFO

Sh: drk gry

Ls: off wh-tan, fn xln, mostly DNS, chalky, NSFO

Ls: tan-lt gry, fn xln, poor pp porosity, sl chalky, NSFO

Ls: tan-gry, fn-sub xln, mostly DNS, sl fsif

Ls: off wh-tan, fn xln, sl chalky, vry poor pp porosity, sl fsif, scat chert-off wh

Ls: ala

Sh: drk gry-brn

Ls: tan-lt gry, fn xln, mostly DNS, sl fsif, scat ss: gry, vry fn grn, no visible porosity, NSFO

Sh: drk gry-blk, carb

Ls: tan-lt gry, fn-sub xln, mostly DNS, sl chalky, sl chert-off wh

Ls: off wh-tan, fn xln, scat pp porosity, NSFO

Sh: lt-drk gry-brn

Ls: off wh-tan, fn xln, poor pp porosity, sl chalky, NSFO

Sh: drk gry-blk, carb

Ls: off wh-tan, fn xln, scat pp porosity, sl fsif, chalky, NSFO

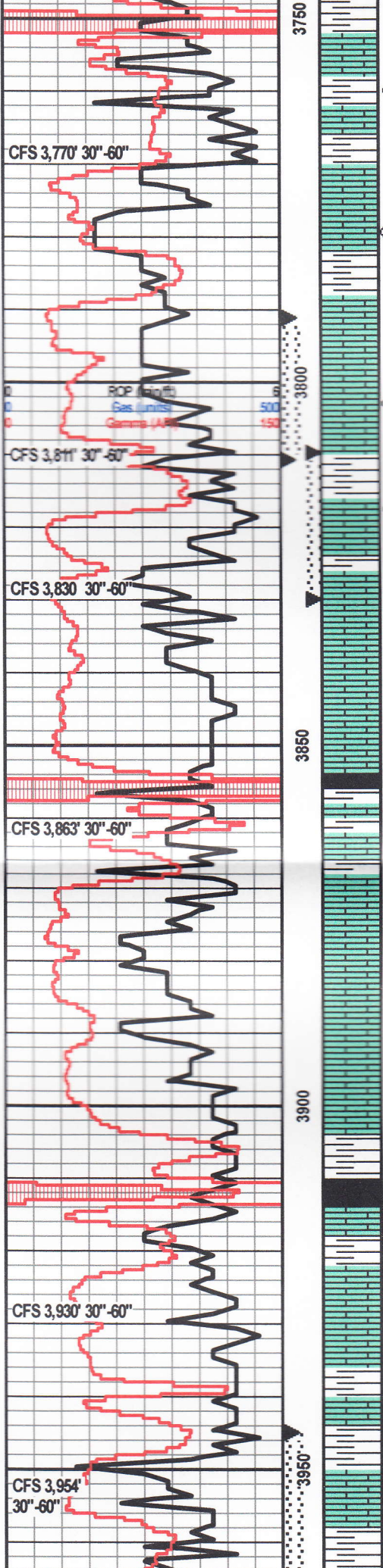
Ls: off wh-tan, fn xln, ool, vry poor ool porosity, scat pyrite, NSFO

Ls: tan-gry, fn-sub xln, mostly DNS, vry chalky

Pipe Strap: 2.57' Short @ 3,770'

DST #1 3,791'-3,811'  
30"-60"-30"-45"

IF: weak blow, built to 1", no blow back  
FF: no blow  
Rec: 20' Drilling Mud w/ slight oil show  
FP: 9-16#, 18-24#  
SIP: 687-658#  
HP: 1,863-1,862#



Sh: lt gry, vry soft

**Toronto 3758' (-1233)**

Ls: off wh-tan, fn xln, vry poor pp porosity, vry sl oil st, NSFO, sl chert-off wh-tan

Sh: drk gry-brn, soft

**Lansing 3775' (-1250)**

Ls: off wh-tan, fn xln, ool, poor pp porosity, vry lt scat oil st, VSSFO on crushing, sl odor, sl chalky, chert-off wh

Sh: gry-brn-grm

Ls: tan-lt gry, fn-sub xln, mostly DNS, sl fsif

Ls: off wh-tan, fn xln, ool, poor ool & pp porosity, lt oil sat, VSSFO, sl odor, sl fsif

Sh: drk gry-brn-grm, vry soft

Ls: off wh-tan, fn xln, ool, poor pp - lim xln porosity, fair oil sat, SSSFO, fair odor

Ls: off wh-lt gry, fn xln, mostly DNS, barren

Ls: off wh-tan, fn xln, mostly DNS, barren, chalky

Ls: tan-lt gry, fn xln, mostly DNS, barren, sl fsif

Sh: scat blk, carb

Ls: off wh-tan, fn xln, ool, poor pp porosity, sl oil st, vry sl trace FO, sl odor,

Ls: tan-lt gry, fn xln, mostly DNS, barren

Ls: off wh-tan, fn xln, ool, fair ool porosity, sl chalky, sl oil st

Ls: tan-lt gry, fn xln, mostly DNS, barren chert-off wh, chalky

Ls: off wh-lt gry, fn xln, mostly DNS, barren, chert-off wh, chalky

Sh: drk gry-blk, carb

Sh: lt gry, vry soft

Ls: off wh-lt gry, fn xln, mostly DNS, barren, sl chert-off wh, chalky

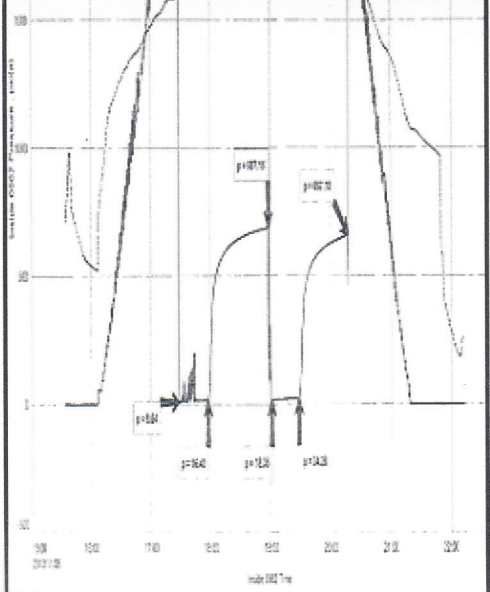
Sh: drk gry-brn-grm

Sh: drk gry-brn, vry soft

Ls: tan-lt gry, fn xln, mostly DNS, fsif, tr dead oil st, NSFO, chert-off wh

Sh: drk gry

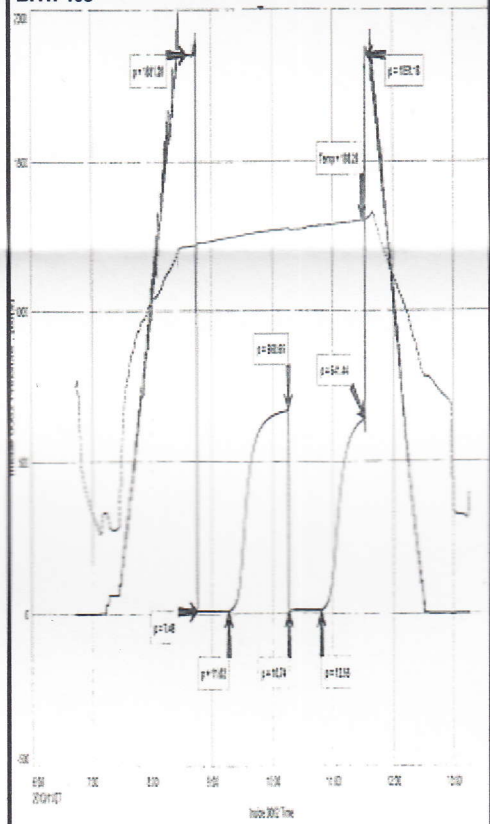
Sh: drk gry-brn-grm



Wt: 9.1  
Vis: 54

DST #2 3,810'-3,830'  
30"-60"-30"-45"

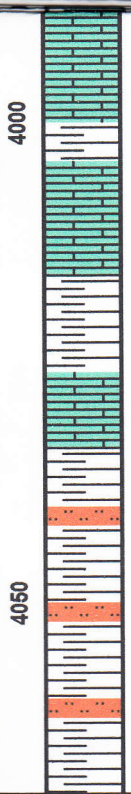
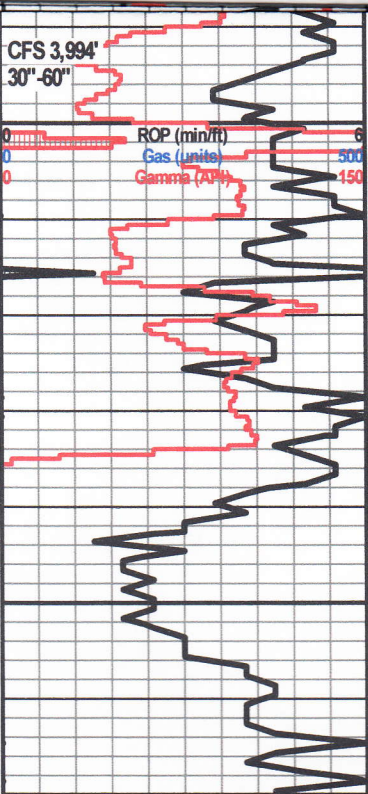
IF: surface blow, built to .25", no blow back  
FF: no blow  
Rec: 5' Drilling Mud  
FP: 8-11#, 11-13#  
SIP: 669-641#  
HP: 1,851, 1851#  
BHT: 108



Wt: 9.3  
Vis: 48

DST #3 3,945'-3,972'  
30"-60"-30"-60"

IF: surface blow, built to 2.5", no blow back  
FF: 1" blow, decreased to .5"  
Rec: 130' GIP, 25' HOCM (35% O, 65% M)  
FP: 9-19#, 21-28#  
SIP: 631-509#  
HP: 1,947-1,945#  
BHT: 112



porosity, vry sh dead on sh, vry to 600', sh brnky

Sh: drk gry-brn-grn

Ls: off wh-tan, fn xln, mostly DNS, barren, sl chalky

**B/KC 4014' (-1589)**

Sh: lt-drk gry-brn, vry soft

Sh: ala

Ls: tan-lt gry, fn-sub xln, mostly DNS, sl chalky, NSFO

Sh, Slst: drk gry-brn-grn

Sh: ala

Sh: drk gry-brn

Sh: drk gry-brn-grn, vry soft

