

KEVIN L. KESSLER
CONSULTING PETROLEUM GEOLOGIST
(316) 522-7338

OPERATOR : MULL DRILLING COMPANY INC.
LEASE : FRANCE WELL # : 1 - 2
LOCATION : 2492' FNL & 2651' FWL
SEC: 02 TWP : 17 S RGE : 32 W
COUNTY : SCOTT STATE : KANSAS

ELEVATION
KB : 2980
GL : 2975
MEASUREMENTS FROM
KB

CONTRACTOR : W. W. DRILLING COMPANY RIG # 10
COMM : 11 / 26 / 2013 COMP : 12 / 06 / 2013
RTD : 4700 LOG TD : 4704
SAMPLES SAVED FROM : 3800 TO: RTD
GEOLOGICAL SUPERVISION FROM : 3800 TO : RTD
MUD UP : 3700 TYPE MUD : CHEMICAL

CASING RECORD
SURFACE :
8 5/8" @ 205'
PRODUCTION :

ELECTRICAL SURVEYS:

FORMATION	TOP	SAMPLE	DATUM	TOP	LOG	DATUM	STRUCT. COMP.
HEEBNER	3940	- 959	3940	- 959	FLAT		
LANSING	3980	- 999	3980	-999	FLAT		
STARK	4252	- 1271	4252	- 1271	+ 03		
BASE / KC	4358	- 1377	4358	- 1377	+ 01		
FORT SCOTT	4513	- 1532	4513	- 1532	+ 03		
CHEROKEE	4538	- 1557	4538	- 1557	+ 03		
MISSISSIPPI	4652	- 1671	4652	- 1671	+ 04		

REFERENCE WELL FOR STRUCTURAL COMPARISON :

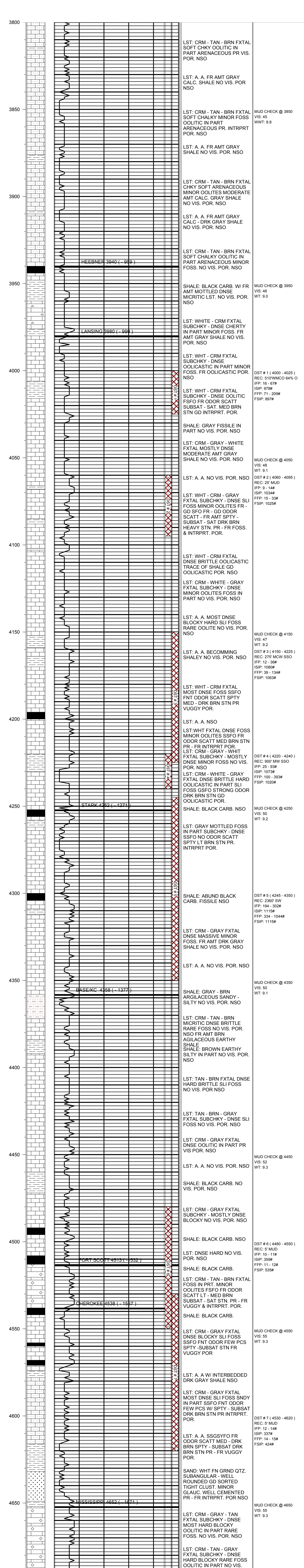
MULL DRILLING CO # 1 - 35 EATON SEC 35 - T 16 S - R 32 W SCOTT COUNTY KANSAS

CDL/CNL

DIL

MICRO

SONIC



MUD CHECK @ 3850
 VIS: 45
 WWT: 8.8

MUD CHECK @ 3950
 VIS: 46
 WWT: 9.0

DST # 1 (4000 - 4025)
 REC: 510' WMC0 64% O
 IFP: 16 - 67#
 ISIP: 97#
 FFP: 71 - 209#
 FSIP: 897#

MUD CHECK @ 4050
 VIS: 48
 WT: 9.1

DST # 2 (4060 - 4095)
 REC: 25' MUD
 IFP: 9 - 14#
 ISIP: 103#
 FFP: 15 - 33#
 FSIP: 1025#

MUD CHECK @ 4150
 VIS: 47
 WT: 9.2

DST # 3 (4150 - 4225)
 REC: 275' MCW SSO
 IFP: 12 - 36#
 ISIP: 1080#
 FFP: 39 - 134#
 FSIP: 1063#

DST # 4 (4220 - 4240)
 REC: 900' MW SSO
 IFP: 25 - 93#
 ISIP: 1073#
 FFP: 100 - 393#
 FSIP: 1020#

MUD CHECK @ 4250
 VIS: 50
 WT: 9.2

DST # 5 (4245 - 4350)
 REC: 2360' SW
 IFP: 194 - 302#
 ISIP: 1115#
 FFP: 334 - 1044#
 FSIP: 1115#

MUD CHECK @ 4350
 VIS: 50
 WT: 9.1

MUD CHECK @ 4450
 VIS: 52
 WT: 9.3

DST # 6 (4480 - 4550)
 REC: 5' MUD
 IFP: 11 - 11#
 ISIP: 359#
 FFP: 11 - 12#
 FSIP: 535#

MUD CHECK @ 4550
 VIS: 55
 WT: 9.3

DST # 7 (4530 - 4620)
 REC: 5' MUD
 IFP: 12 - 14#
 ISIP: 337#
 FFP: 14 - 15#
 FSIP: 424#

MUD CHECK @ 4650
 VIS: 55
 WT: 9.3

RTD = 4700 LTD = 4704

COMMENTS:

DUE TO MARGINAL DST RESULTS & POOR LOG CALCULATIONS

THIS WELL WAS PLUGGED AS

D & A

KEVIN L. KESSLER