

Company **BECKER OIL CORPORATION**
 Well **GLEASON #2**
 Field **SAW LOG CREEK**
 County **HODGEMAN**
 State **KANSAS**

Company **BECKER OIL CORPORATION**
 Well **GLEASON #2**
 Field **SAW LOG CREEK**
 County **HODGEMAN** State **KANSAS**

Location **1000' FSL & 335' FWL**
 SEC. **32** TWP. **23S** RGE. **21W**
 Permanent Datum **GROUND LEVEL** Elevation **2359**
 Log Measured From **KELLY BUSHING 10' AGL**
 Drilling Measured From **KELLY BUSHING**
 Other Services
 Elevation
 K.B. 2369
 D.F.
 G.L. 2359

Date	12-18-2013						
Run Number	ONE						
Depth Driller	4575						
Depth Logger	4555						
Bottom Logged Interval	4554						
Top Log Interval	3215						
Open Hole Size	WATER						
Type Fluid	WATER						
Density / Viscosity							
Max. Recorded Temp.							
Estimated Cement Top	3415						
Time Well Ready							
Time Logger on Bottom							
Equipment Number	52						
Location	GREAT BEND						
Recorded By	LEE BRETZ						
Witnessed By	MR. DOUG BROWN						
Borehole Record		Tubing Record					
Run Number	Bit	From	To	Size	Weight	From	To
Casing Record	Size	Wgt/Ft		Top	Bottom		
Surface String	8.625			0	332		
Prot. String							
Production String	5.5			0	4572		
Liner							

<<< Fold Here >>>

All interpretations are opinions based on inferences from electrical or other measurements and we cannot and do not guarantee the accuracy or correctness of any interpretation, and we shall not, except in the case of gross or willful negligence on our part, be liable or responsible for any loss, costs, damages, or expenses incurred or sustained by anyone resulting from any interpretation made by any of our officers, agents or employees. These interpretations are also subject to our general terms and conditions set out in our current Price Schedule.

Comments

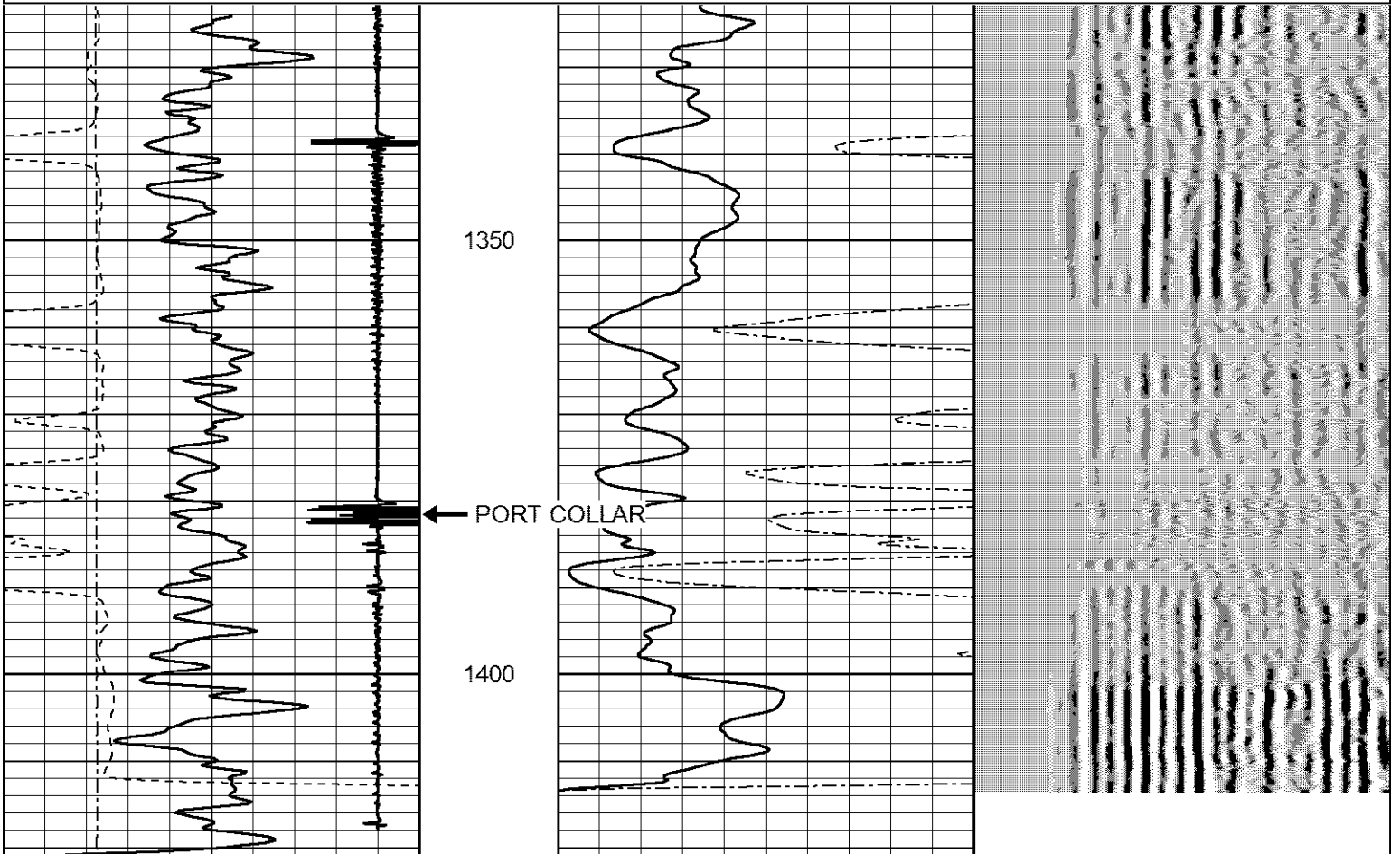
THANK YOU FOR USING LOG TECH OF KANSAS!
 (620)792-2167

DIRECTIONS
 BURDETT, KS
 5 WEST TO RD 233
 11 SOUTH TO RD G
 1 3/4 WEST NORTH INTO

CORRECTED -2' TO OPENHOLE LOG

Database File: gleason.db
 Dataset Pathname: pass5
 Presentation Format: cbl02
 Dataset Creation: Wed Dec 18 09:23:05 2013 by Log 7.0 B1
 Charted by: Depth in Feet scaled 1:240

9	Collar Locator	-1	0	Amplitude (mV)	100	200	VARIABLE DENSITY	1200
0	Gamma Ray (GAPI)	150	0	X5 Amplitude (mV)	20			
320	TT3 (usec)	120						
0	LTEN (lb)	2000						



9	Collar Locator	-1	0	Amplitude (mV)	100	200	VARIABLE DENSITY	1200
0	Gamma Ray (GAPI)	150	0	X5 Amplitude (mV)	20			
320	TT3 (usec)	120						
0	LTEN (lb)	2000						



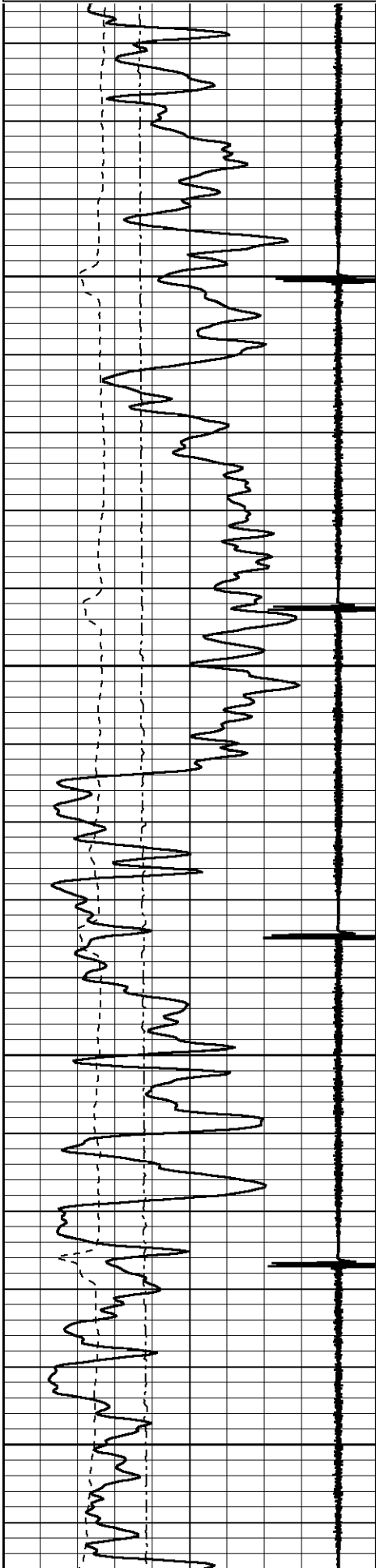
MAIN PASS

Database File: gleason.db
 Dataset Pathname: pass4
 Presentation Format: cbl02
 Dataset Creation: Wed Dec 18 08:42:09 2013 by Log 7.0 B1
 Charted by: Depth in Feet scaled 1:240

9	Collar Locator	-1	0	Amplitude (mV)	100	200	VARIABLE DENSITY	1200
0	Gamma Ray (GAPI)	150	0	X5 Amplitude (mV)	20			
320	TT3 (usec)	120						
0	LTEN (lb)	2000						

0	Gamma Ray (GAPI)	150
320	TT3 (usec)	120
0	LTEN (lb)	2000

0 X5 Amplitude (mv) 20

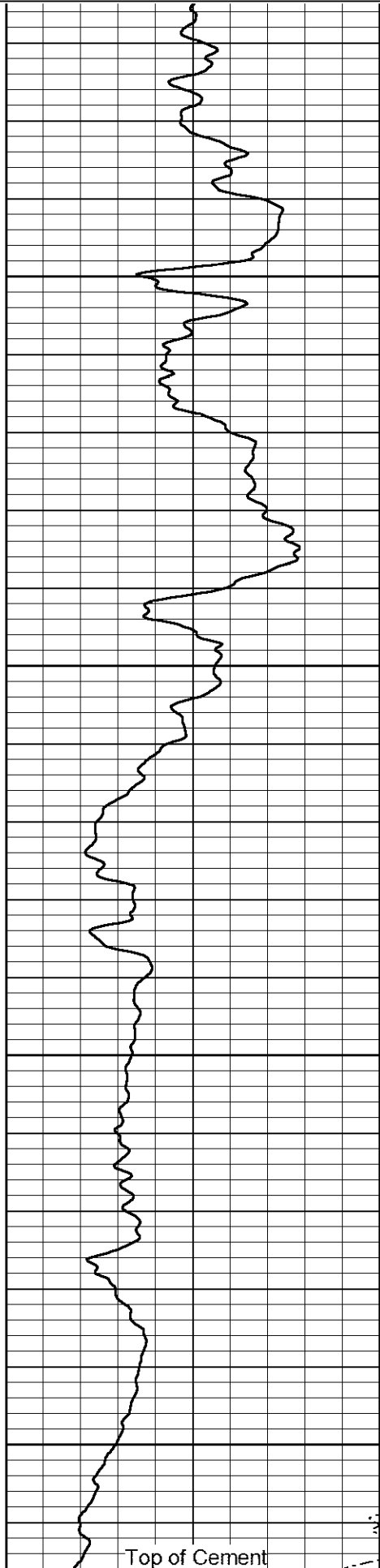


3250

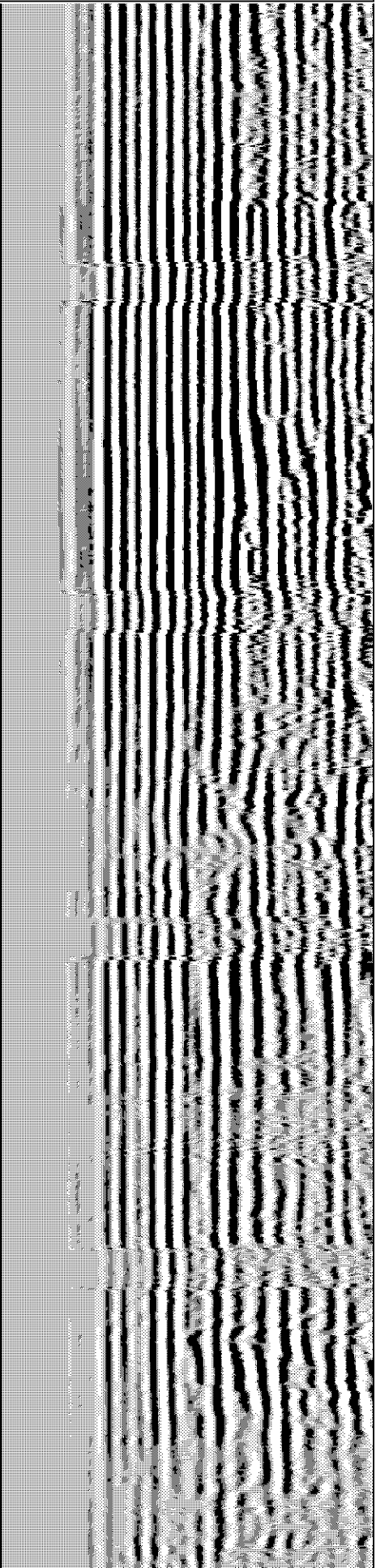
3300

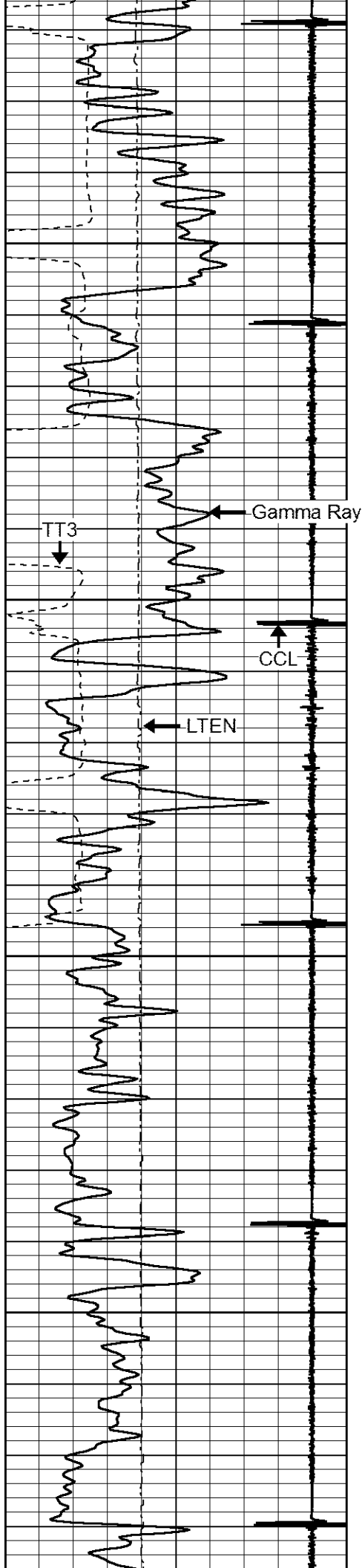
3350

3400



Top of Cement



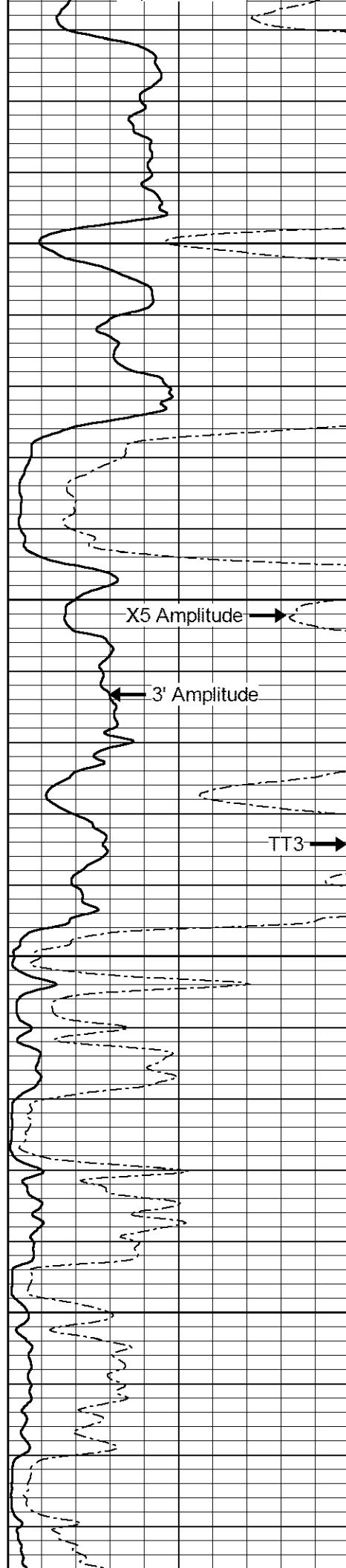


3450

3500

3550

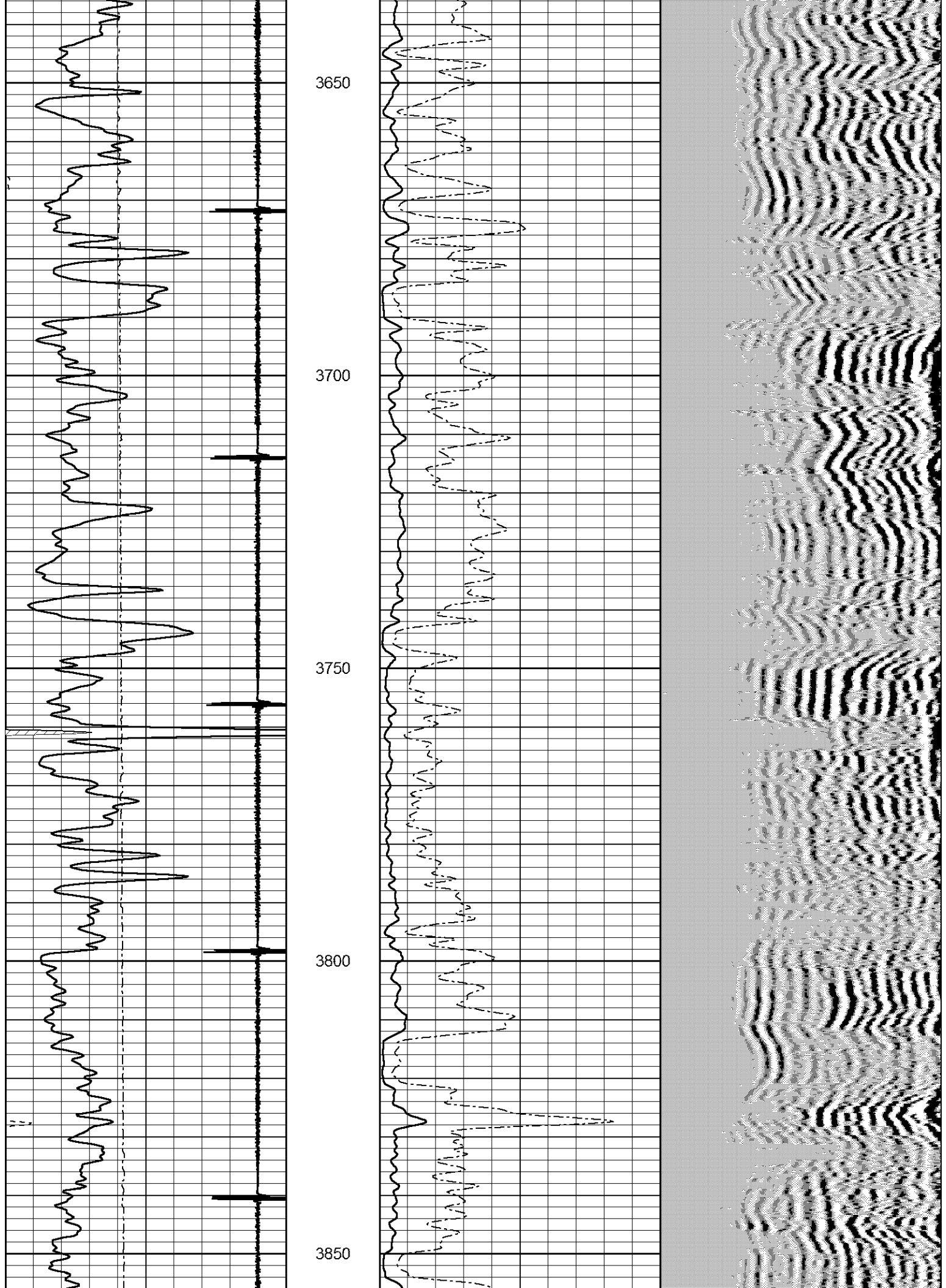
3600

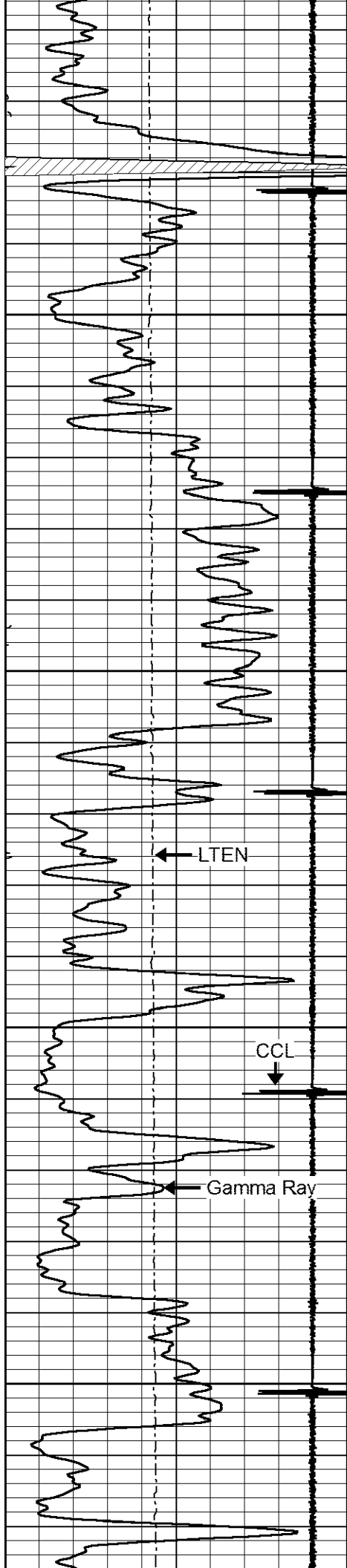


X5 Amplitude

3' Amplitude

TT3





3900

3950

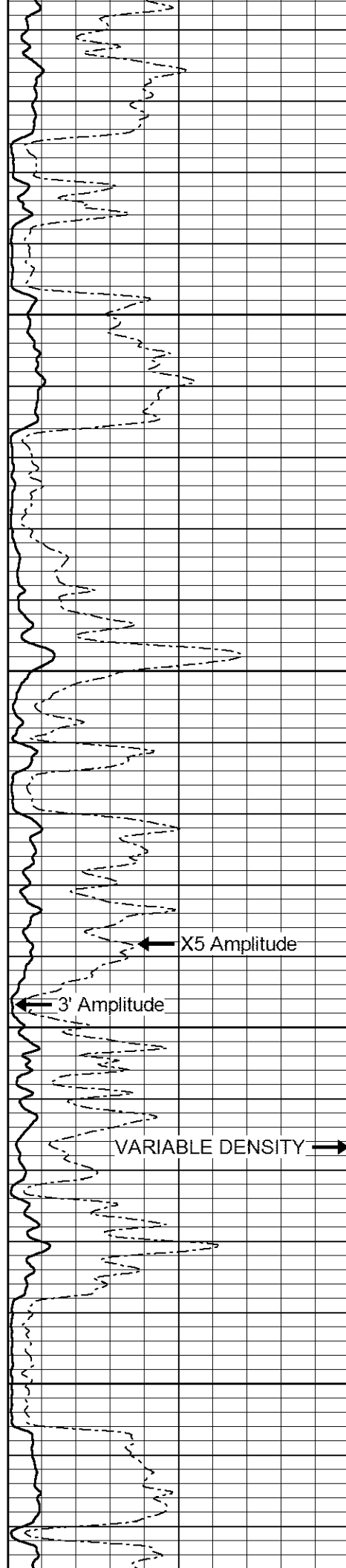
4000

4050

← LTEN

↓ CCL

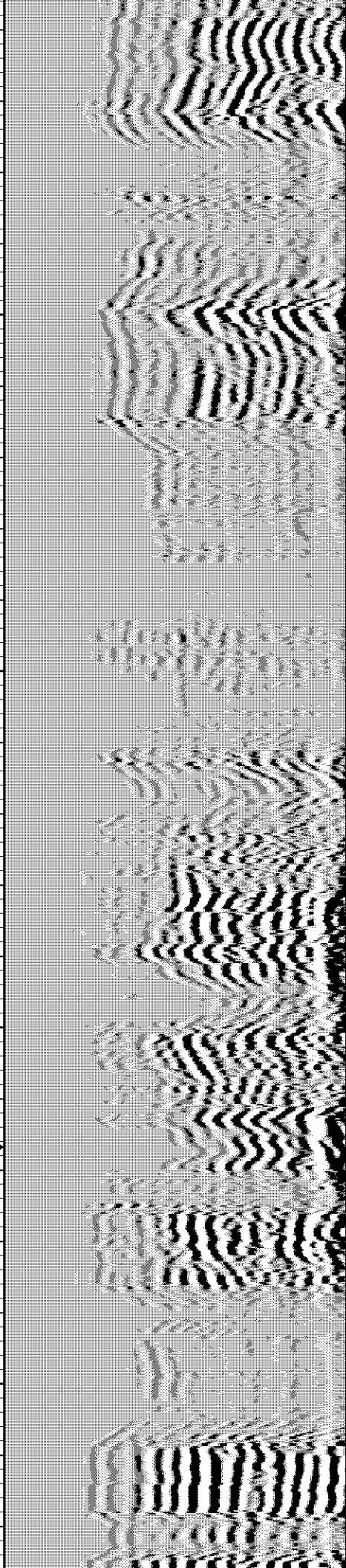
← Gamma Ray

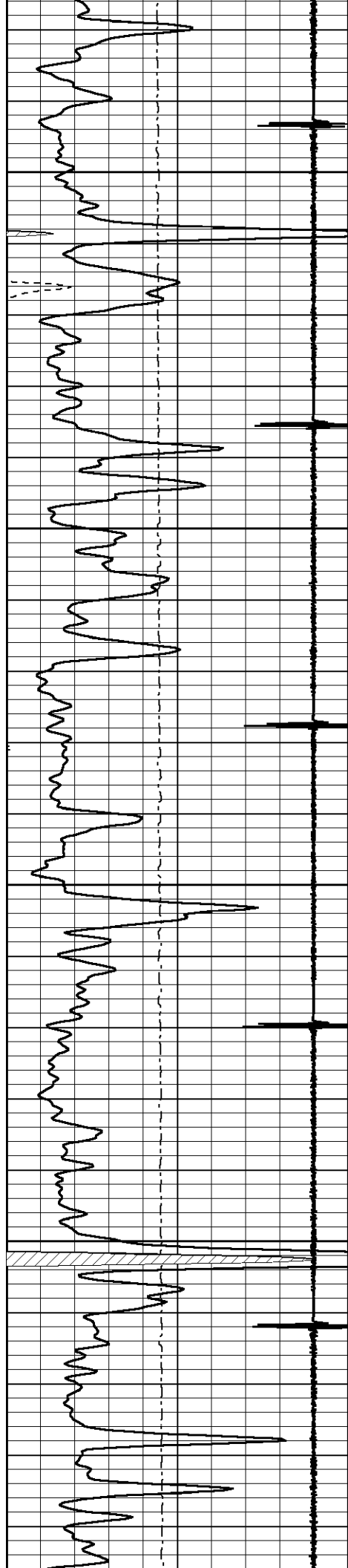


← X5 Amplitude

← 3' Amplitude

VARIABLE DENSITY →



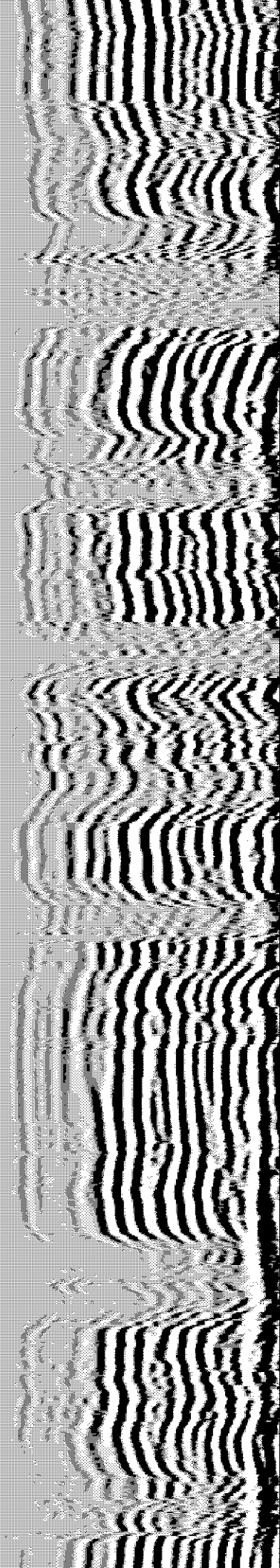
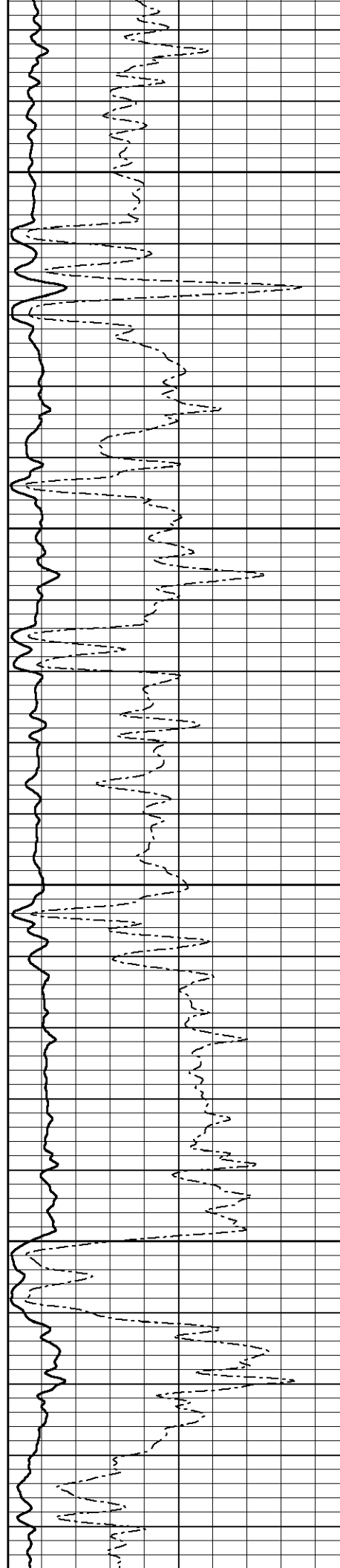


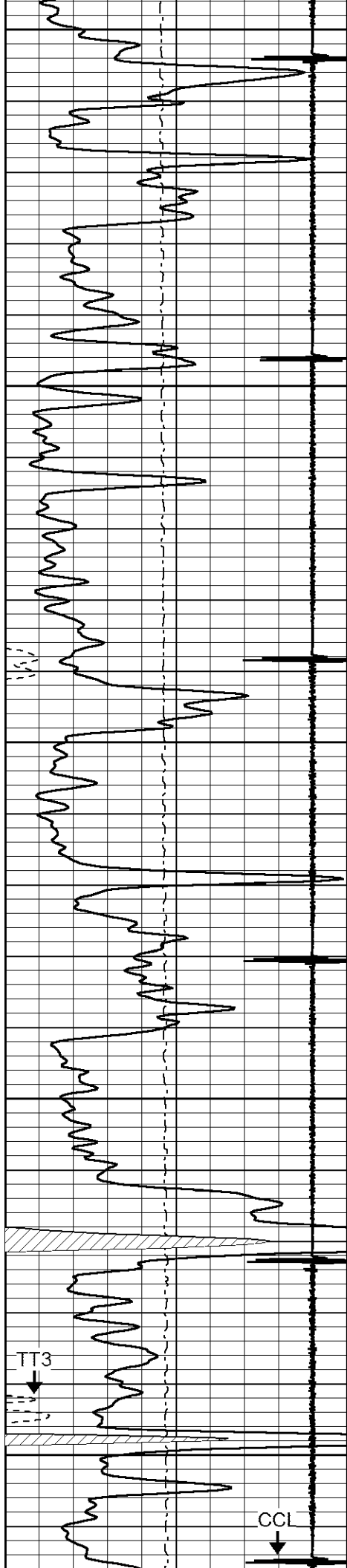
4100

4150

4200

4250





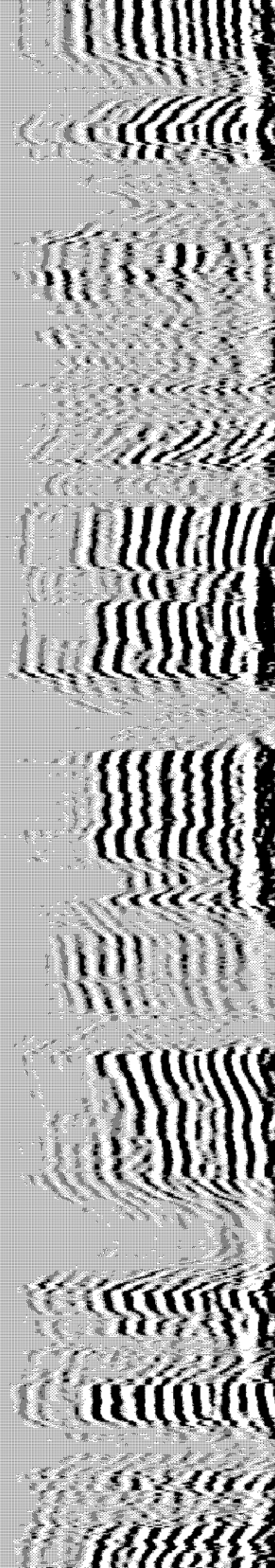
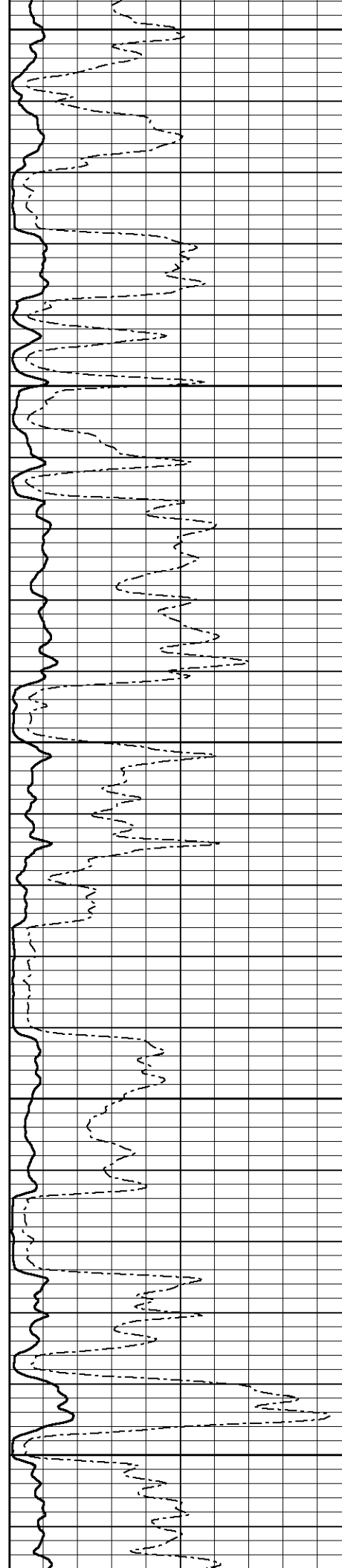
4300

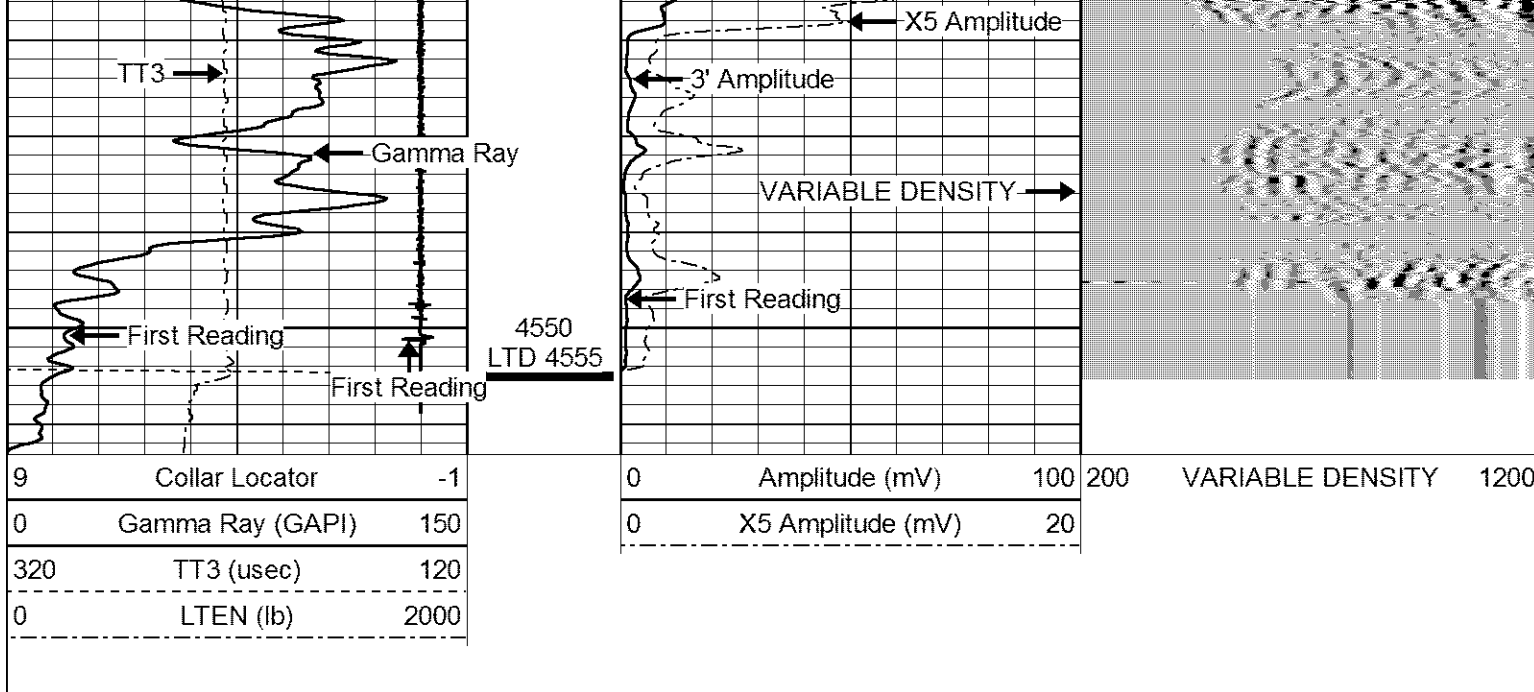
4350

4400

4450

4500

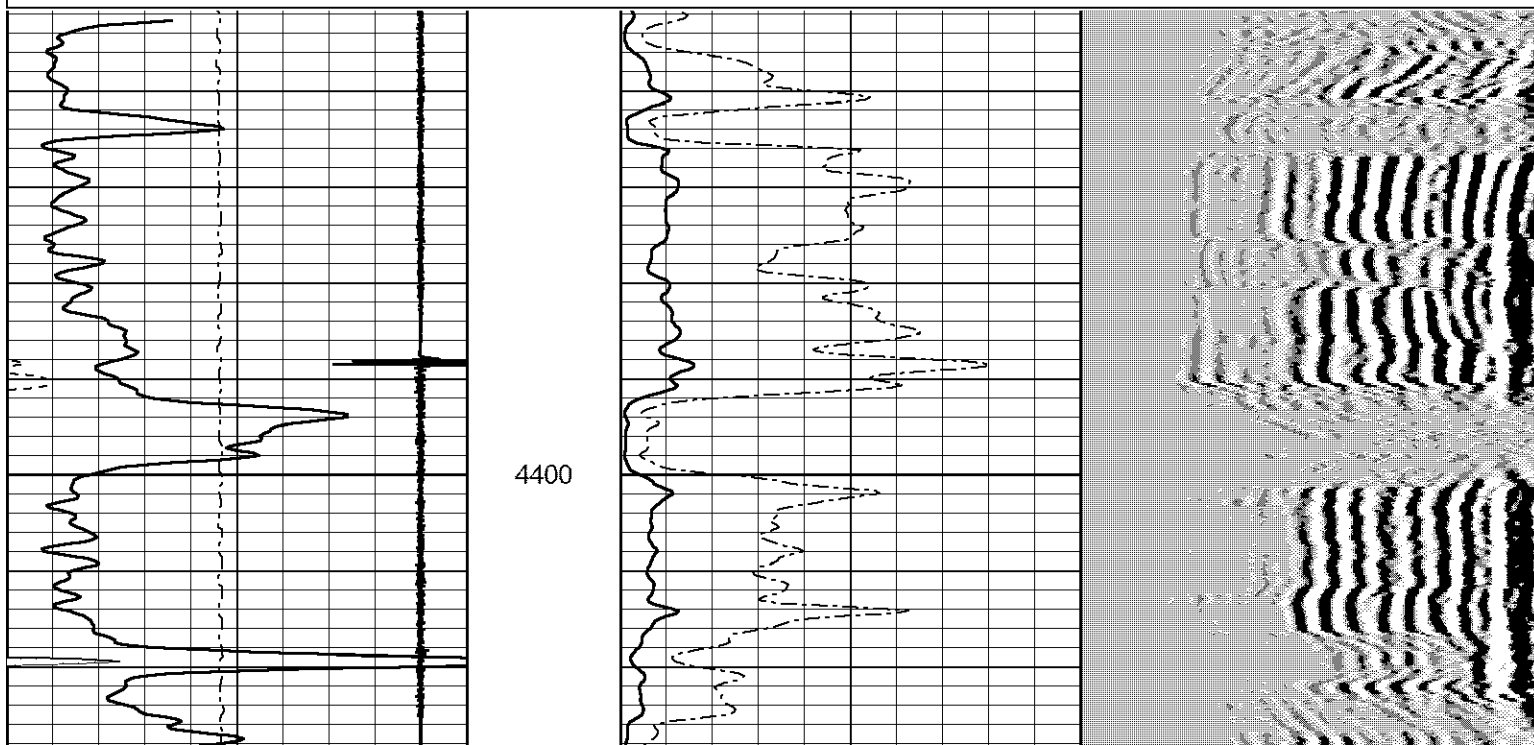
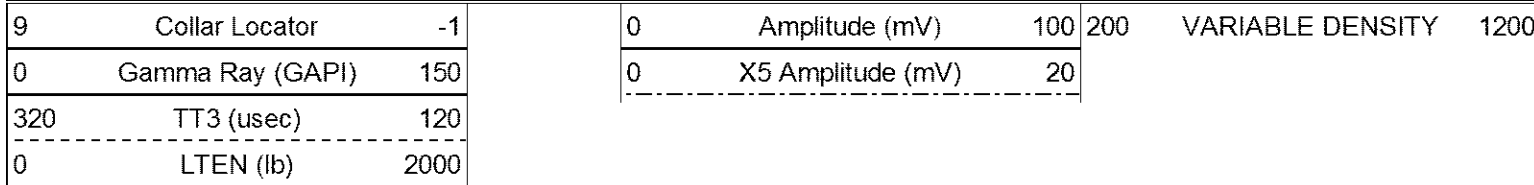




LOG-TECH
of Kansas
Inc.
GREAT BEND, KANSAS

REPEAT SECTION

Database File: gleason.db
 Dataset Pathname: pass3
 Presentation Format: cbl02
 Dataset Creation: Wed Dec 18 08:32:40 2013 by Log 7.0 B1
 Charted by: Depth in Feet scaled 1:240



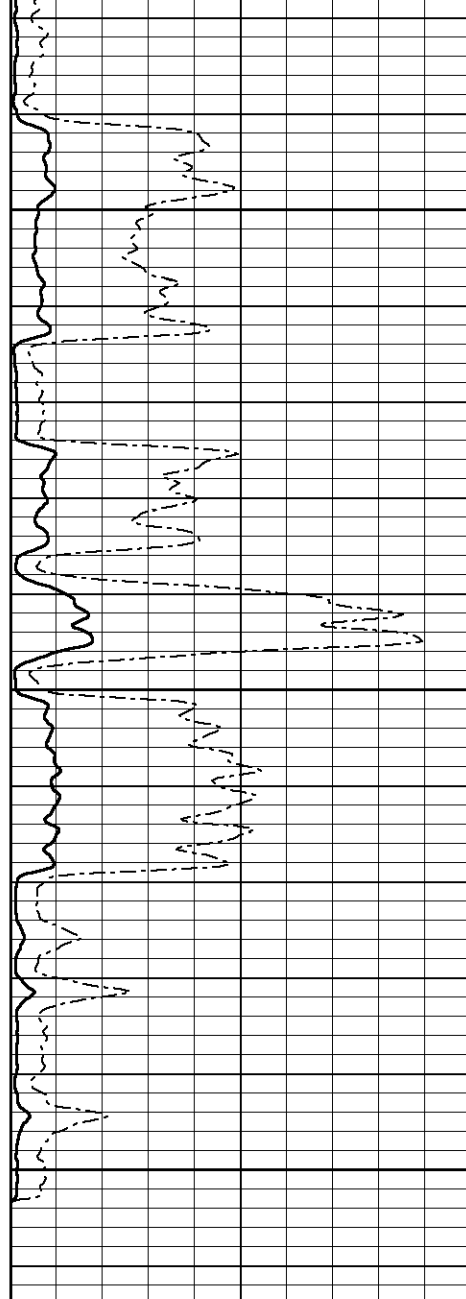


4450

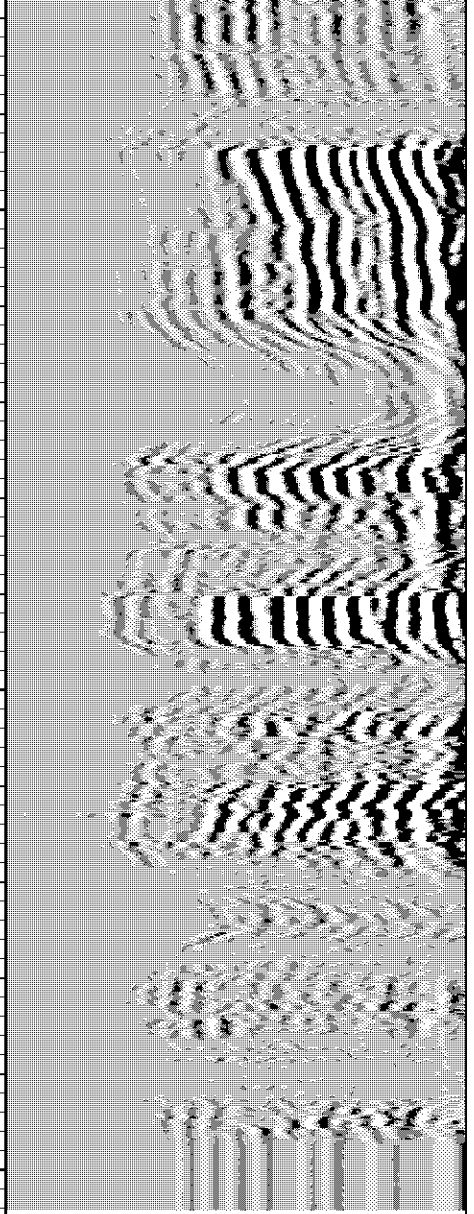
4500

4550

9	Collar Locator	-1
0	Gamma Ray (GAPI)	150
320	TT3 (usec)	120
0	LTEN (lb)	2000



0	Amplitude (mV)	100
0	X5 Amplitude (mV)	20



200 VARIABLE DENSITY 1200