

# Saman Sharifaie

## Petroleum Geologist

### GEOLOGIST'S REPORT

#### DRILLING TIME AND SAMPLE LOG

COMPANY: **Martin Drilling Co., Inc.**  
LEASE: **Zimbabwe #1-28**

FIELD: **Wildcat**  
LOCATION: **330' FSL & 330' FWL**  
SEC: **28 TWSP 2S** RANGE: **41W**  
COUNTY: **Cheyenne** STATE: **Kansas**  
CONTRACTOR: **Martin Drilling #14**  
RPTD: **11/25/13** COMP: **12/06/13**  
MUD UP: **5450' LTD 5444'**  
MUD TYPE: **3505' TYPE MUD** Chemical

SAMPLES SAVED FROM: **4240'** TO RTD  
DRILLING TIME KEPT FROM: **4240'** TO RTD  
SAMPLES EXAMINED FROM: **4240'** TO RTD  
GEOLOGICAL SUPERVISION FROM: **3940'**

REFERENCE WELL: **Rate "A" #1-1-32**  
CND: **D.L. MEL, Samir**  
Pioneer Wellfile

ELEVATIONS  
KB: **3667'**  
DF: \_\_\_\_\_  
GL: **3657'**  
Measurements Are All From Kelly Bushing

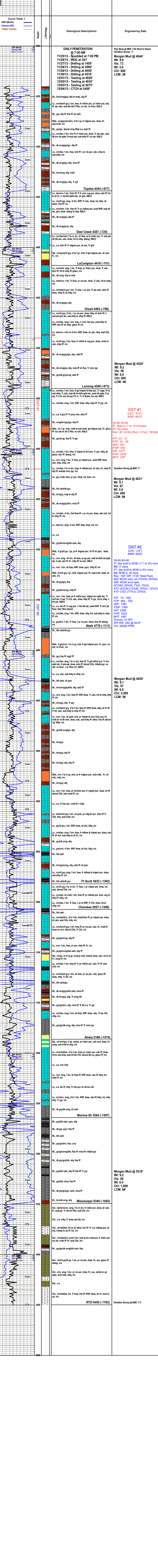
CASING  
CONDUCTOR: \_\_\_\_\_  
SURFACE: **8-5/8" at 377'**  
PRODUCTION: **5-1/2" at 543'**

Formation	Sample Tops	E-log Tops	Stand Pos.
Amshvilitic	3563 (+64)	3596 (+107)	+1
Bismarck	4341 (+74)	4344 (+77)	-2
Towson	4438 (-70)	4463 (-96)	-10
Oread	4538 (-87)	4540 (-87)	-8
LeCompton	4786 (-119)	4778 (-111)	-8
Stark	4801 (-124)	4824 (-127)	-18
Marathon	5060 (-155)	5057 (-150)	-21
Mississippian	5351 (-165)	5349 (-162)	DNR

REMARKS: Due to fair to good shows of oil in multiple pay zones and positive DST results, it is recommended and agreed upon by all parties that production casing be set to further evaluate this well.

Respectfully Submitted,  
Saman Sharifaie  
Petroleum Geologist

API #15-023-21374  
\*Tops have been adjusted to electric logs



RTD 5450' (-1783)  
Deviation Survey @ 5450': 1/2"