

GEOLOGIST'S REPORT
DRILLING TIME AND SAMPLE LOG

COMPANY **SHAKESPERE OIL CO.** ELEVATIONS
 LEASE **York L-12** KG 2848'
 FIELD **Widest** DF _____
 LOCATION **800 FNL, 2247 F.W.L.** GL 2838'
 SEC **12 TWP 16S R9E** 31W
 COUNTY **Scott** STATE **Kansas** Measurements Are All From **KB**

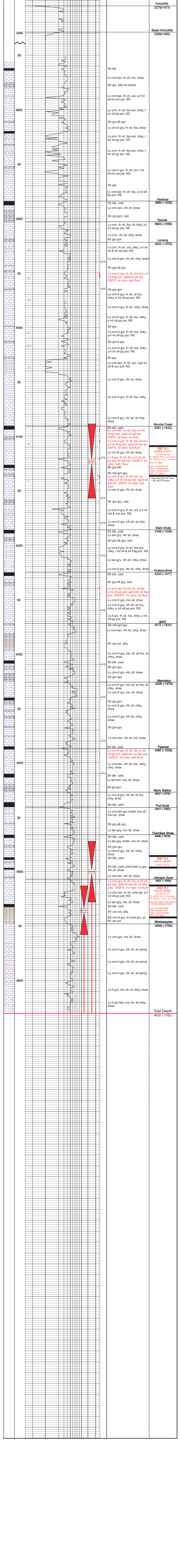
CONTRACTOR **HD Rig #2** From **KB**
 SPUD **2-28-14** COMP **3-10-14**
 RTD **4630'** LTD **4632'** CASING **N/A**
 MUD UP **3600'** TYPE MUD **Chemical** CONDUCTION **N/A**
 SAMPLES SAVED FROM **3750'** to RTD SURFACE **8-5/8" @ 223'**
 DRILLING TIME KEPT FROM **3750'** to RTD PRODUCTION **None**
 SAMPLES EXAMINED FROM **3750'** to RTD
 GEOLOGICAL SUPERVISION FROM **3850'** to RTD
 GEOLOGIST ON WELL **Tim Priest** By: **Wetherford**

FORMATION TOPS ELECTRIC LOG SAMPLE
 Anhydrite 2272 (+576) 2275 (+573)
 Sandstone 3880 (-1032) 3884 (-1036)
 Heebner 3922 (-1074)
 Lansing 4183 (-1335) 4186 (-1338)
 BKC 4269 (-1421) 4272 (-1424)
 Fort Scott 4441 (-1593) 4441 (-1593)
 Mississippian 4548 (-1700) 4548 (-1700)

REMARKS Due to lack of shows and negative DST's, it was decided to plug and abandon the well.

Respectfully Submitted,
 Tim Priest
 Petroleum Geologist

API #15-171-21032-00-00



REMARKS

DST # 1 (4089'-4157')
 30"-30" 45"-90"
 FF: Built to 3/4 in., no return
 Rec: 5' GSM
 Fps: 10-14#/16-21#
 S/Ps: 1033#/1042#
 H/Ss: 1973#/1907#
 BHT: 111 deg F
 Pipe strap @ 4157' was 1.98' short to board

DST # 2 (4472'-4528')
 (Packer Failure)

DST # 3 (4513'-4558')
 30"-30" 45"-90"
 FF: Built to 3/2 in., no return
 Rec: 1 1/2 in., no return
 Fps: 45-74#/76-98#
 S/Ps: 1069#/112#
 H/Ss: 2261#/2228#
 BHT: 126 deg F

Total Depth 4630' (-1782)