



**TRILOBITE  
TESTING, INC.**

# DRILL STEM TEST REPORT

Shakespeare Oil Co., Inc.

**12-16s-31w Scott Co.**

202 W Main St  
Salem, IL 62881

**York #1-12**

Job Ticket: 54622

**DST#: 3**

ATTN: Tim Priest

Test Start: 2014.03.09 @ 19:55:00

## GENERAL INFORMATION:

Formation: **Johnson Zone**

Deviated: No Whipstock: ft (KB)

Time Tool Opened: 22:18:30

Time Test Ended: 04:01:45

Test Type: Conventional Straddle (Reset)

Tester: Jace McKinney

Unit No: 75

**Interval: 4513.00 ft (KB) To 4558.00 ft (KB) (TVD)**

Reference Elevations: 2848.00 ft (KB)

Total Depth: 4630.00 ft (KB) (TVD)

2838.00 ft (CF)

Hole Diameter: 7.88 inches Hole Condition: Poor

KB to GR/CF: 10.00 ft

**Serial #: 8675**

**Inside**

Press @ Run Depth: 93.54 psig @ 4514.00 ft (KB)

Capacity: 8000.00 psig

Start Date: 2014.03.09

End Date:

2014.03.10

Last Calib.:

2014.03.10

Start Time: 19:55:15

End Time:

04:01:45

Time On Btm:

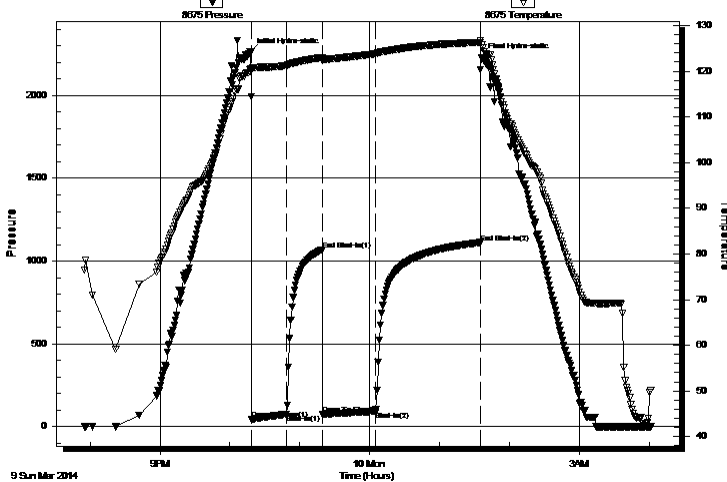
2014.03.09 @ 22:18:00

Time Off Btm:

2014.03.10 @ 01:36:15

**TEST COMMENT:** Built to 3 1/4" blow  
Bled off for 3 min. No return blow  
Built to 1 1/4" blow  
Bled off for 3 min. No return blow

Pressure vs. Time



## PRESSURE SUMMARY

Time (Min.)	Pressure (psig)	Temp (deg F)	Annotation
0	2261.41	120.63	Initial Hydro-static
1	44.72	120.17	Open To Flow (1)
31	74.44	121.28	Shut-In(1)
62	1069.48	123.02	End Shut-In(1)
62	76.29	122.38	Open To Flow (2)
107	93.54	123.84	Shut-In(2)
197	1112.10	126.32	End Shut-In(2)
199	2228.81	125.72	Final Hydro-static

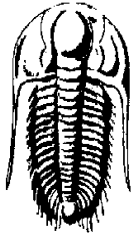
## Recovery

Length (ft)	Description	Volume (bbl)
119.00	mcw 40%M 60%W	0.59
50.00	w cm 10%W 90%M	0.70
0.00	Bottom packer did NOT hold	0.00

## Gas Rates

Choke (inches)	Pressure (psig)	Gas Rate (Mcf/d)

\* Recovery from multiple tests



# TRILOBITE TESTING, INC.

## DRILL STEM TEST REPORT

Shakespeare Oil Co., Inc.

12-16s-31w Scott Co.

202 W Main St  
Salem, IL 62881

York #1-12

Job Ticket: 54622

DST#: 3

ATTN: Tim Priest

Test Start: 2014.03.09 @ 19:55:00

### GENERAL INFORMATION:

Formation: **Johnson Zone**

Deviated: No Whipstock: ft (KB)

Time Tool Opened: 22:18:30

Time Test Ended: 04:01:45

Test Type: Conventional Straddle (Reset)

Tester: Jace McKinney

Unit No: 75

Interval: **4513.00 ft (KB) To 4558.00 ft (KB) (TVD)**

Reference Elevations: 2848.00 ft (KB)

Total Depth: 4630.00 ft (KB) (TVD)

2838.00 ft (CF)

Hole Diameter: 7.88 inches Hole Condition: Poor

KB to GR/CF: 10.00 ft

Serial #: **8650** Outside

Press @ Run Depth: psig @ 4514.00 ft (KB)

Capacity: 8000.00 psig

Start Date: 2014.03.09

End Date:

2014.03.10

Last Calib.:

2014.03.10

Start Time: 19:55:15

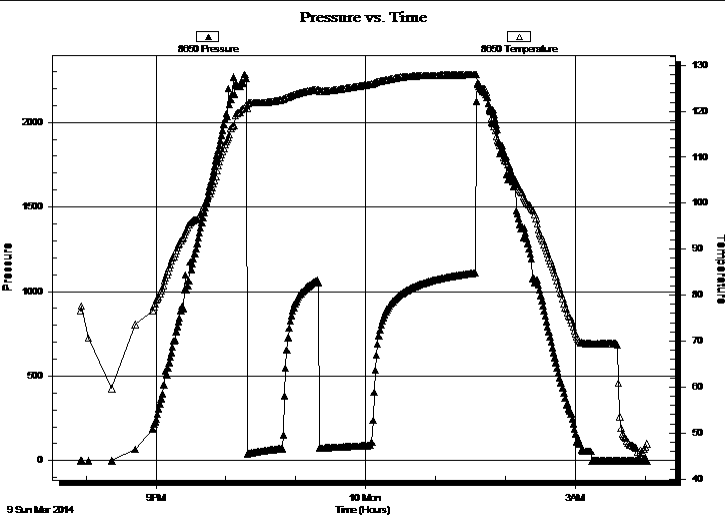
End Time:

04:01:30

Time On Btm:

Time Off Btm:

TEST COMMENT: Built to 3 1/4" blow  
Bled off for 3 min. No return blow  
Built to 1 1/4" blow  
Bled off for 3 min. No return blow



### PRESSURE SUMMARY

Time (Min.)	Pressure (psig)	Temp (deg F)	Annotation

### Recovery

Length (ft)	Description	Volume (bbl)
119.00	mcw 40%M 60%W	0.59
50.00	w cm 10%W 90%M	0.70
0.00	Bottom packer did NOT hold	0.00

### Gas Rates

	Choke (inches)	Pressure (psig)	Gas Rate (Mcf/d)

\* Recovery from multiple tests



**TRILOBITE TESTING, INC.**

# DRILL STEM TEST REPORT

Shakespeare Oil Co., Inc.

**12-16s-31w Scott Co.**

202 W Main St  
Salem, IL 62881

**York #1-12**

Job Ticket: 54622

**DST#: 3**

ATTN: Tim Priest

Test Start: 2014.03.09 @ 19:55:00

## GENERAL INFORMATION:

Formation: **Johnson Zone**

Deviated: No Whipstock: ft (KB)

Time Tool Opened: 22:18:30

Time Test Ended: 04:01:45

**Interval: 4513.00 ft (KB) To 4558.00 ft (KB) (TVD)**

Total Depth: 4630.00 ft (KB) (TVD)

Hole Diameter: 7.88 inches Hole Condition: Poor

Test Type: Conventional Straddle (Reset)

Tester: Jace McKinney

Unit No: 75

Reference Elevations: 2848.00 ft (KB)

2838.00 ft (CF)

KB to GR/CF: 10.00 ft

## Serial #: 6672

Press @ Run Depth: psig @ 4569.00 ft (KB)

Start Date: 2014.03.09 End Date: 2014.03.10

Start Time: 19:55:01 End Time: 04:03:15

Capacity: 8000.00 psig

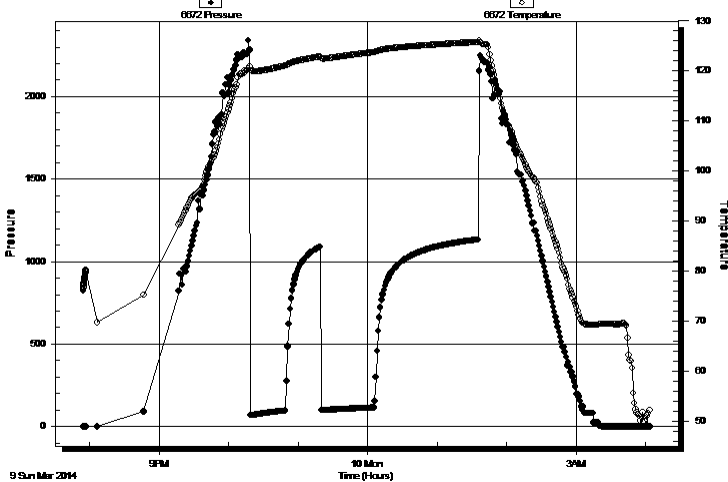
Last Calib.: 2014.03.10

Time On Btm:

Time Off Btm:

**TEST COMMENT:** Built to 3 1/4" blow  
Bled off for 3 min. No return blow  
Built to 1 1/4" blow  
Bled off for 3 min. No return blow

Pressure vs. Time



## PRESSURE SUMMARY

Time (Min.)	Pressure (psig)	Temp (deg F)	Annotation

## Recovery

Length (ft)	Description	Volume (bbl)
119.00	mcw 40%M 60%W	0.59
50.00	w cm 10%W 90%M	0.70
0.00	Bottom packer did NOT hold	0.00

## Gas Rates

Choke (inches)	Pressure (psig)	Gas Rate (Mcf/d)

\* Recovery from multiple tests



**TRILOBITE  
TESTING, INC.**

# DRILL STEM TEST REPORT

**FLUID SUMMARY**

Shakespeare Oil Co., Inc.

**12-16s-31w Scott Co.**

202 W Main St  
Salem, IL 62881

**York #1-12**

Job Ticket: 54622

**DST#: 3**

ATTN: Tim Priest

Test Start: 2014.03.09 @ 19:55:00

## Mud and Cushion Information

Mud Type: Gel Chem	Cushion Type:	Oil API:	deg API
Mud Weight: 9.00 lb/gal	Cushion Length: ft	Water Salinity:	ppm
Viscosity: 62.00 sec/qt	Cushion Volume: bbl		
Water Loss: 6.80 in <sup>3</sup>	Gas Cushion Type:		
Resistivity: 0.00 ohm.m	Gas Cushion Pressure: psig		
Salinity: 3100.00 ppm			
Filter Cake: 1.00 inches			

## Recovery Information

Recovery Table

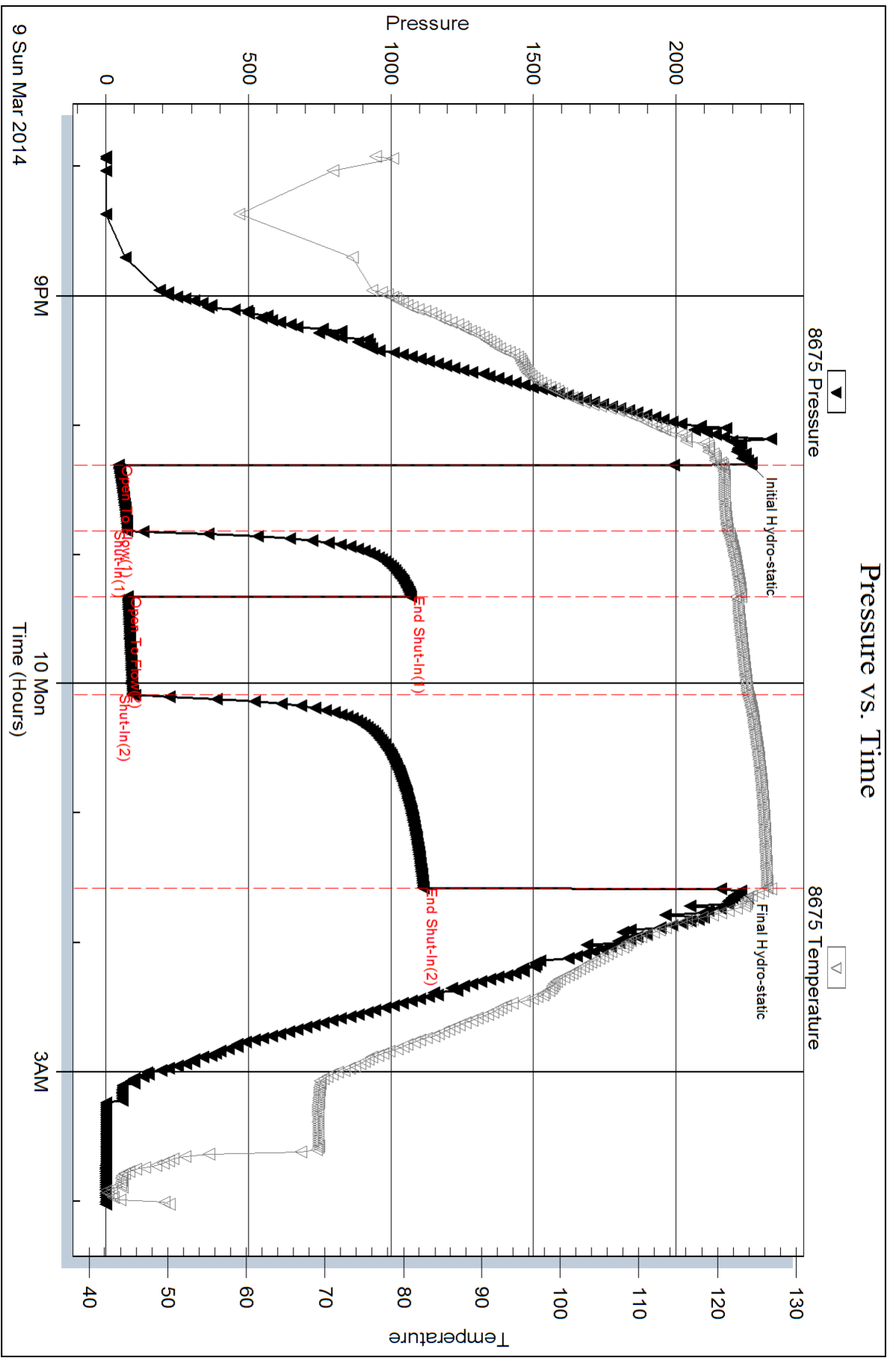
Length ft	Description	Volume bbl
119.00	mcw 40%M 60%W	0.585
50.00	w cm 10%W 90%M	0.701
0.00	Bottom packer did NOT hold	0.000

Total Length: 169.00 ft      Total Volume: 1.286 bbl

Num Fluid Samples: 0      Num Gas Bombs: 0      Serial #:

Laboratory Name:      Laboratory Location:

Recovery Comments: RW: .50 @ 45 F = 20,000

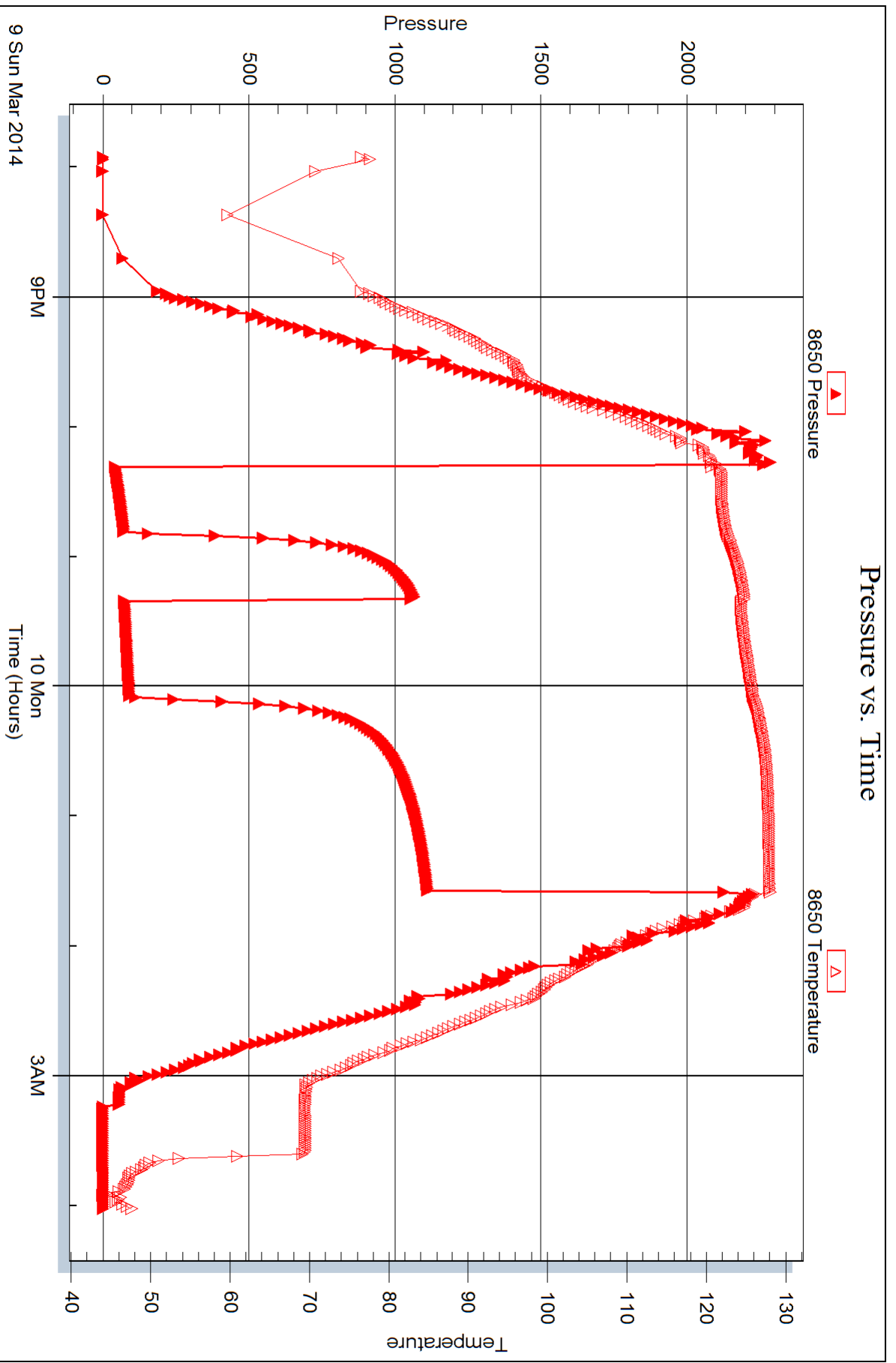


Serial #: 8650

Outside Shakespeare Oil Co., Inc.

York #1-12

DST Test Number: 3



Trilobite Testing, Inc

Ref. No: 54622

Printed: 2014.03.10 @ 07:24:45

