

OPERATOR

Company: La Veta Oil and Gas LLC.
 Address: 312 N. Buffalo
 Stafford, KS 67578

Contact Geologist: Bruce Reed
 Contact Phone Nbr: 316-617-3959
 Well Name: #3 Gatton
 Location: Section 29-22S-11W
 Pool:
 State: Kansas

API: 15-185-23862
 Field: Richardson Field
 Country: USA

Scale 1:240 Imperial

Well Name: #3 Gatton
 Surface Location: Section 29-22S-11W
 Bottom Location:
 API: 15-185-23862
 License Number: 32432
 Spud Date: 3/5/2014 Time: 12:00 PM
 Region:
 Drilling Completed: 3/11/2014 Time: 12:00 PM
 Surface Coordinates: 2575 FNL & 1365 FWL
 Bottom Hole Coordinates:
 Ground Elevation: 1825.00ft
 K.B. Elevation: 1830.00ft
 Logged Interval: 2700.00ft To: 3671.00ft
 Total Depth: 3675.00ft
 Formation:
 Drilling Fluid Type: Chemical

SURFACE CO-ORDINATES

Well Type: Vertical
 Longitude: NA Latitude: NA
 N/S Co-ord: 2575 FNL
 E/W Co-ord: 1365 FWL

LOGGED BY

Company: TerraTech Energy Service, LLC.
 Address: 1632 S. West St Suite 12
 Wichita, KS 67213

Phone Nbr: 316-264-6066
 Logged By: Geologist

Name: Bruce Reed

CONTRACTOR

Contractor: Petromark
 Rig #: 2
 Rig Type: mud rotary
 Spud Date: 3/5/2014 Time: 12:00 PM
 TD Date: 3/11/2014 Time: 12:00 PM
 Rig Release: Time:

ELEVATIONS

K.B. Elevation: 1830.00ft
K.B. to Ground: 5.00ft

Ground Elevation: 1825.00ft

NOTES

Surface Casing: 8-5/8" at 205' with 275 sacks

Deviation survey: 3/4 degree at 3567'

Pipe strap: 0.47' short to the board

DST: 3 - Trilobite

Daily Penetration:	3/05/14	SPUD
	3/06/14	210'
	3/07/14	1730'
	3/08/14	2760'
	3/09/14	3385'
	3/10/14	3567'
	3/11/14	3675'

Drill Stem Test #1 3561'-3567' (Arbuckle)
Recovered: 55' Gas, 25' OCM (19% oil, 81% mud)
IFP: 30" 29-30 psi, ISIP: 45" 1025 psi, FFP: 30" 31-33 psi, FSIP: 45" 932 psi

Drill Stem Test #2 3567'-3575' (Arbuckle)
Recovered: 495' Gas, 80' CGO and 25' GMCO (36% gas, 33% oil, 31% mud)
IFP: 30" 34-44 psi, ISIP: 45" 180 psi, FFP: 45" 23-43 psi, FSIP: 60" 93 psi

Drill Stem Test #3 3578'-3610' (Arbuckle/Straddle)
Recovered: 220' Gas, 1,125' GOCMW (15% gas, 15% oil, 60% water, 10% mud) and 580' FW
IFP: 15" 375-519 psi, ISIP: 30" 996 psi, FFP: 15" 588-726 psi, FSIP: 30" 995 psi

Formation	Log Top	Datum	Sample Top	Datum	Comparison*
Heebner Shale	3081'	-1251	3084'	-1254	+2
Toronto	3100'	-1270	3101'	-1271	+1
Brown Lime	3218'	-1388	3221'	-1391	+2
Lansing	3244'	-1414	3248'	-1418	+3
Base Kansas City	3491'	-1661	3495'	-1665	+3
Simpson	3529'	-1699	3533'	-1703	+2
Arbuckle	3558'	-1728	3559'	-1729	-5

*Reference Well: La Veta Oil and Gas, #9 P. Spangenberg, 2190' FSL/1770' FWL, Section 29-22S-11W, Stafford Co. Kansas

ROCK TYPES

 Dolprim	 shale, gry	 Ss
 Lmst fw7>	 Carbon Sh	

OTHER SYMBOLS

INTERVALS

■ Core
· DST

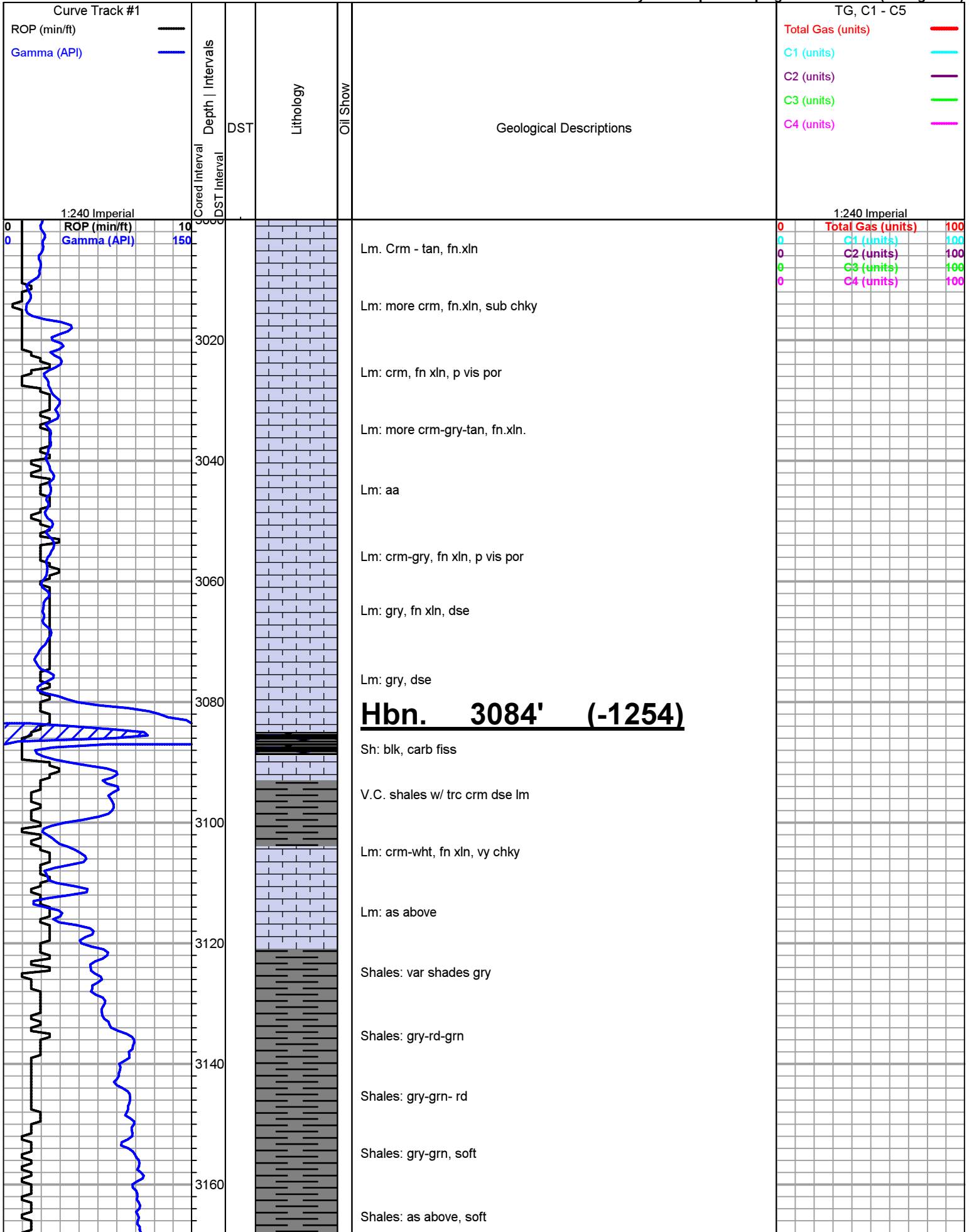
Oil Show

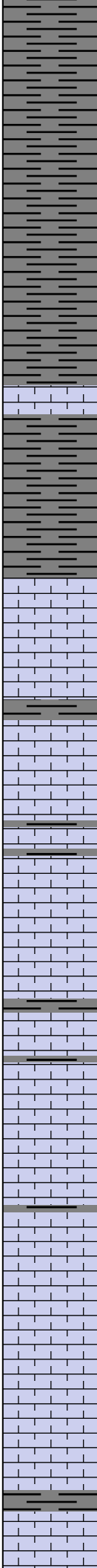
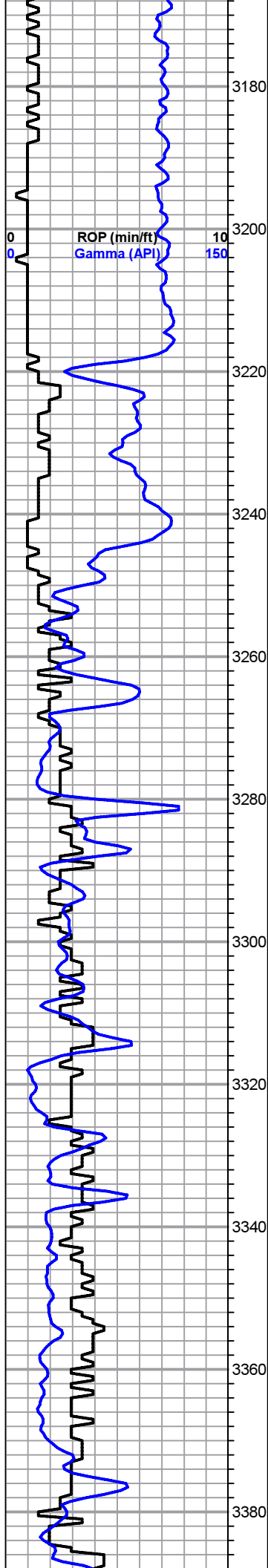
● Good Show
● Fair Show
● Poor Show
○ Spotted or Trace

DST

■ DST Int
■ DST alt
■ Core
|| tail pipe

- Questionable Stn
- ◻ Dead Oil Stn
- Fluorescence
- * Gas





Shales: as above, soft

Shales: mostly gry, soft

Shale: gry

Shale: gry

B. Lm. 3221' (-1391)

Lm: tan-brn, fn xln, p-no vis por, dse

Shales: varicolored, soft

L/KC 3248' (-1418)

Lm: crm-tan-lgt gry, fn xln, vy sli fsl, trc chky, n.s.

Lm: crm-lgt tan-gry, fn-sli md xln, trc sctd fsl, p vis por, n.s.

Lm: more crm-lgt gry, fn xln, some fsl, p vis por, n.s., trc chky

Lm: crm-wht-brn, dse

Lm: crm-wht-lgt tan-gry, fn to sli md xln, p vis por, trc chky, n.s.

Lm: gry-tan-wht, fn xln, rare vis por, some chky, odor in fresh spl, n.s.f.o

Lm: gry-lgt-tan, fn xln, trc oolit, p vis por, trc cht, sli odor, n.s.f.o.

Lm: crm-wht-lgt tan, dse, n.s.

Lm: tan-gry, fn to micro xln, p-no vis por, vy dse, n.s.

Lm: Crm-tan-wht-lgt gry, f. xln, dse, lots rd, gry sh, n.s

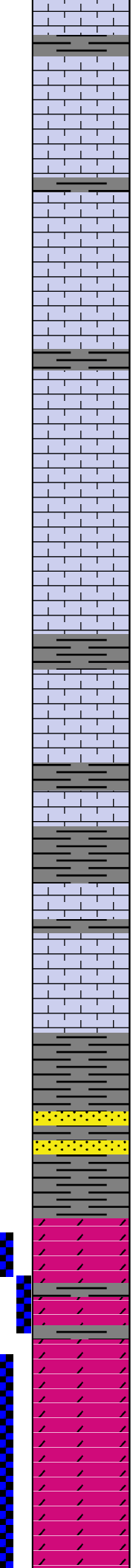
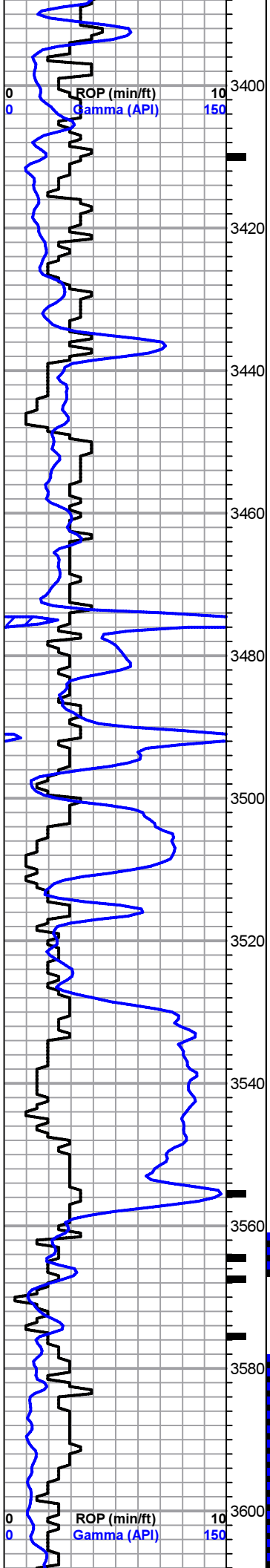
Lm: crm-wht dse, sub cherty

Lm: gry-tan, mostly fn xln, trc fsl (oolitic), fnt odor in fresh spl, 1 pc s.s.f.o.

Lm: aa

Lm: crm-wht-lgt gry, fn xln, sli fsl, p vis por, sub chky, n.s.

0	Total Gas (units)	100
0	C1 (units)	100
0	C2 (units)	100
0	C3 (units)	100
0	C4 (units)	100



Circ. 24 3410' Lm: bf-crm-tan, fn. xln., few pcs poorly dev, oolite to oolitic, p vis por, sub chky, fnt odor in fresh, v.s.s.f.o

Lm: Crm-igt tan-gry, fn. xln., oolitic, p vis por, vy fnt odor w/ v.s.s.f.o.

Lm: crm-tan, fn xln, trc oolic, p-fr por, inter oolic, sub chky, 3 pcs w/ v.s.s.f.o ? odor

Lm: tan-crm-brn, dse

Lm: crm-wht, fn. xln., sctd pp, vug por, vy chky, n.s.

Chky wht lm

Lm: gry-crm, f-md xln, dse

Lm: aa

Abdt gry-dk gry-blk-rd shale

Lm: crm-wht, f xln, sli fsl, sctd blk-dk gry shale

Abdt rd-gry platey shl.

Shale aa w/ some dse, brn-tan lm.

Lm: crm-wht, fn xln, dse

Trc. pale grn-rd-gry shale, some turq blue sticky shale

Arb. 3559' (-1729)

Circ at 3555' Shl: pale grn-blue, odor in fresh, 2 sst clusters, md grnd, sub-rd, mod fri, w/ s.s.f.o.

Circ at 3564' Dolo: tan, f-md xln, p-fr vis por, suc, good strong odor in fresh w/ s.f.o

Circ at 3567' Dolo: bf, crm-tan, fn-sli md xln, suc, Looks tite, some pp vug por, good strong odor w/ s.f.o., some sctd unif md brn stn

Circ at 3575' Dolo: crm-tan, more md xln, w/ f-gd vug por, suc in part, very strong odor w/ f.s.f.o and gb

Dolo: crm-tan-gry, fn-sli md xln, suc nature, very strong odor, s..f.o. and gb

Dolo: crm-wht, more md-co xln, fair-gd inter xln por, very strong odor w/ s.f.o.

0	Total Gas (units)	100
0	C1 (units)	100
0	C2 (units)	100
0	C3 (units)	100
0	C4 (units)	100

0	Total Gas (units)	100
0	C1 (units)	100
0	C2 (units)	100
0	C3 (units)	100

