



**TRILOBITE  
TESTING, INC**

# DRILL STEM TEST REPORT

Berexco LLC  
2020 N. Bramblewood  
Wichita KS 67206  
ATTN: Peter Vollmer

**35 - 1S - 36W Rawlins KS**

**Kenneth #1-35**

Job Ticket: 55960 **DST#: 4**

Test Start: 2014.01.30 @ 20:39:00

## GENERAL INFORMATION:

Formation: **LKC " D - E "**  
 Deviated: No Whipstock: ft (KB)  
 Time Tool Opened: 00:21:50  
 Time Test Ended: 09:17:19  
 Interval: **4396.00 ft (KB) To 4490.00 ft (KB) (TVD)**  
 Total Depth: 4490.00 ft (KB) (TVD)  
 Hole Diameter: 7.88 inches Hole Condition: Good  
 Test Type: Conventional Bottom Hole (Reset)  
 Tester: 58  
 Unit No: Ryan Nichols  
 Reference Elevations: 3326.00 ft (KB)  
 3313.00 ft (CF)  
 KB to GR/CF: 13.00 ft

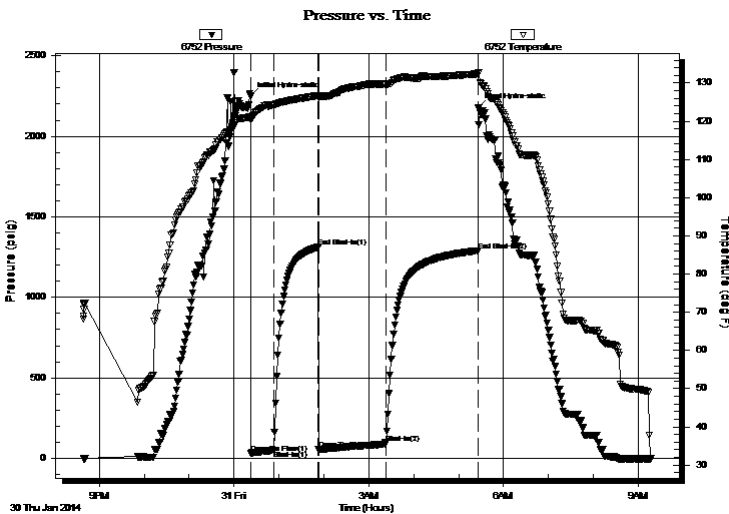
## Serial #: 6752

Inside

Press@RunDepth: 93.07 psig @ 4397.00 ft (KB) Capacity: 8000.00 psig  
 Start Date: 2014.01.30 End Date: 2014.01.31 Last Calib.: 2014.01.31  
 Start Time: 20:39:01 End Time: 09:17:19 Time On Btm: 2014.01.31 @ 00:21:40  
 Time Off Btm: 2014.01.31 @ 05:26:30

TEST COMMENT: 30 IF - 1" blow built to 4"  
 60 ISI - No return  
 90 FF - Surface blow built to 2"  
 120 FSI - No return

## PRESSURE SUMMARY



Time (Min.)	Pressure (psig)	Temp (deg F)	Annotation
0	2249.02	121.11	Initial Hydro-static
1	32.24	120.42	Open To Flow (1)
31	49.69	124.20	Shut-In(1)
91	1311.57	126.74	End Shut-In(1)
92	53.85	126.33	Open To Flow (2)
181	93.07	129.68	Shut-In(2)
305	1289.93	132.40	End Shut-In(2)
305	2177.57	132.68	Final Hydro-static

## Recovery

Length (ft)	Description	Volume (bbl)
100.00	Mud w/oil spots 100%m	0.49

\* Recovery from multiple tests

## Gas Rates

Choke (inches)	Pressure (psig)	Gas Rate (Mcf/d)



**TRILOBITE  
TESTING, INC**

# DRILL STEM TEST REPORT

## FLUID SUMMARY

Berexco LLC

**35 - 1S - 36W Rawlins KS**

2020 N. Bramblewood  
Wichita KS 67206

**Kenneth #1-35**

Job Ticket: 55960

**DST#: 4**

ATTN: Peter Vollmer

Test Start: 2014.01.30 @ 20:39:00

### Mud and Cushion Information

Mud Type: Gel Chem

Cushion Type:

Oil API:

deg API

Mud Weight: 9.00 lb/gal

Cushion Length:

ft

Water Salinity:

ppm

Viscosity: 44.00 sec/qt

Cushion Volume:

bbbl

Water Loss: 7.99 in<sup>3</sup>

Gas Cushion Type:

Resistivity: ohm.m

Gas Cushion Pressure:

psig

Salinity: 1600.00 ppm

Filter Cake: 2.00 inches

### Recovery Information

Recovery Table

Length ft	Description	Volume bbl
100.00	Mud w /oil spots 100%m	0.492

Total Length: 100.00 ft      Total Volume: 0.492 bbl

Num Fluid Samples: 0

Num Gas Bombs: 0

Serial #:

Laboratory Name:

Laboratory Location:

Recovery Comments:

