



**TRILOBITE TESTING, INC.**

# DRILL STEM TEST REPORT

Berexco LLC  
 2020 N. Bramblewood  
 Wichita KS 67206  
 ATTN: Peter Vollmer

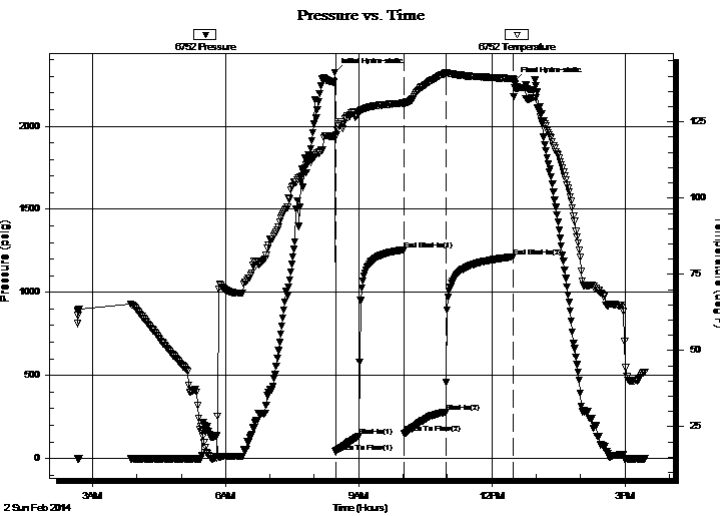
**35 - 1S - 36W Rawlins KS**  
**Kenneth #1-35**  
 Job Ticket: 55961 **DST#: 5**  
 Test Start: 2014.02.02 @ 02:40:00

## GENERAL INFORMATION:

Formation: **Pawnee**  
 Deviated: No Whipstock: ft (KB)  
 Test Type: Conventional Bottom Hole (Reset)  
 Time Tool Opened: 08:28:30 Tester: 58  
 Time Test Ended: 15:27:49 Unit No: Ryan Nichols  
 Interval: **4625.00 ft (KB) To 4736.00 ft (KB) (TVD)** Reference Elevations: 3326.00 ft (KB)  
 Total Depth: 4736.00 ft (KB) (TVD) 3313.00 ft (CF)  
 Hole Diameter: 7.88 inches Hole Condition: Good KB to GR/CF: 13.00 ft

**Serial #: 6752 Inside**  
 Press@RunDepth: 279.24 psig @ 4626.00 ft (KB) Capacity: 8000.00 psig  
 Start Date: 2014.02.02 End Date: 2014.02.02 Last Calib.: 2014.02.03  
 Start Time: 02:40:01 End Time: 15:27:49 Time On Btm: 2014.02.02 @ 08:28:09  
 Time Off Btm: 2014.02.02 @ 12:29:40

**TEST COMMENT:** 30 IF - Surface blow built to BoB @ 7 mins  
 60 ISI - No return  
 60 FF - Surface blow started @ 4 mins built to BoB @ 45 mins  
 90 FSI - No return



## PRESSURE SUMMARY

Time (Min.)	Pressure (psig)	Temp (deg F)	Annotation
0	2324.05	120.49	Initial Hydro-static
1	39.79	120.25	Open To Flow (1)
33	133.04	128.02	Shut-In(1)
94	1256.31	131.15	End Shut-In(1)
94	149.29	130.88	Open To Flow (2)
150	279.24	141.04	Shut-In(2)
241	1214.18	139.21	End Shut-In(2)
242	2265.71	137.89	Final Hydro-static

## Recovery

Length (ft)	Description	Volume (bbl)
440.00	MCW - 5%M - 95%W	2.16
120.00	WCM - 25%W - 75%M	0.85

\* Recovery from multiple tests

## Gas Rates

	Choke (inches)	Pressure (psig)	Gas Rate (Mcf/d)



**TRILOBITE  
TESTING, INC**

# DRILL STEM TEST REPORT

**FLUID SUMMARY**

Berexco LLC

**35 - 1S - 36W Rawlins KS**

2020 N. Bramblewood  
Wichita KS 67206

**Kenneth #1-35**

Job Ticket: 55961

**DST#: 5**

ATTN: Peter Vollmer

Test Start: 2014.02.02 @ 02:40:00

## Mud and Cushion Information

Mud Type: Gel Chem

Cushion Type:

Oil API:

deg API

Mud Weight: 9.00 lb/gal

Cushion Length:

ft

Water Salinity:

ppm

Viscosity: 43.00 sec/qt

Cushion Volume:

bbbl

Water Loss: 7.60 in<sup>3</sup>

Gas Cushion Type:

Resistivity: ohm.m

Gas Cushion Pressure:

psig

Salinity: 1400.00 ppm

Filter Cake: 2.00 inches

## Recovery Information

Recovery Table

Length ft	Description	Volume bbl
440.00	MCW - 5%M - 95%W	2.164
120.00	WCM - 25%W - 75%M	0.854

Total Length: 560.00 ft      Total Volume: 3.018 bbl

Num Fluid Samples: 0

Num Gas Bombs: 0

Serial #:

Laboratory Name:

Laboratory Location:

Recovery Comments:

