

LINN OPERATING INC. SHORE B-5 ATU-223
 205' FNL
 195' FWL
 NW/4 OF NW/4 OF NW/4 OF NW/4 OF
 SECTION 22, T-29-S, R-39-W
 LATITUDE: 37°31'05.48844" N
 LONGITUDE: 101°34'46.72173" W
 GROUND ELEVATION: 3184.5'

Keller
 Surveying &
 Mapping
 2330 B LAKEVIEW DRIVE
 AMARILLO, TEXAS 79109
 PH. (806)418-5253

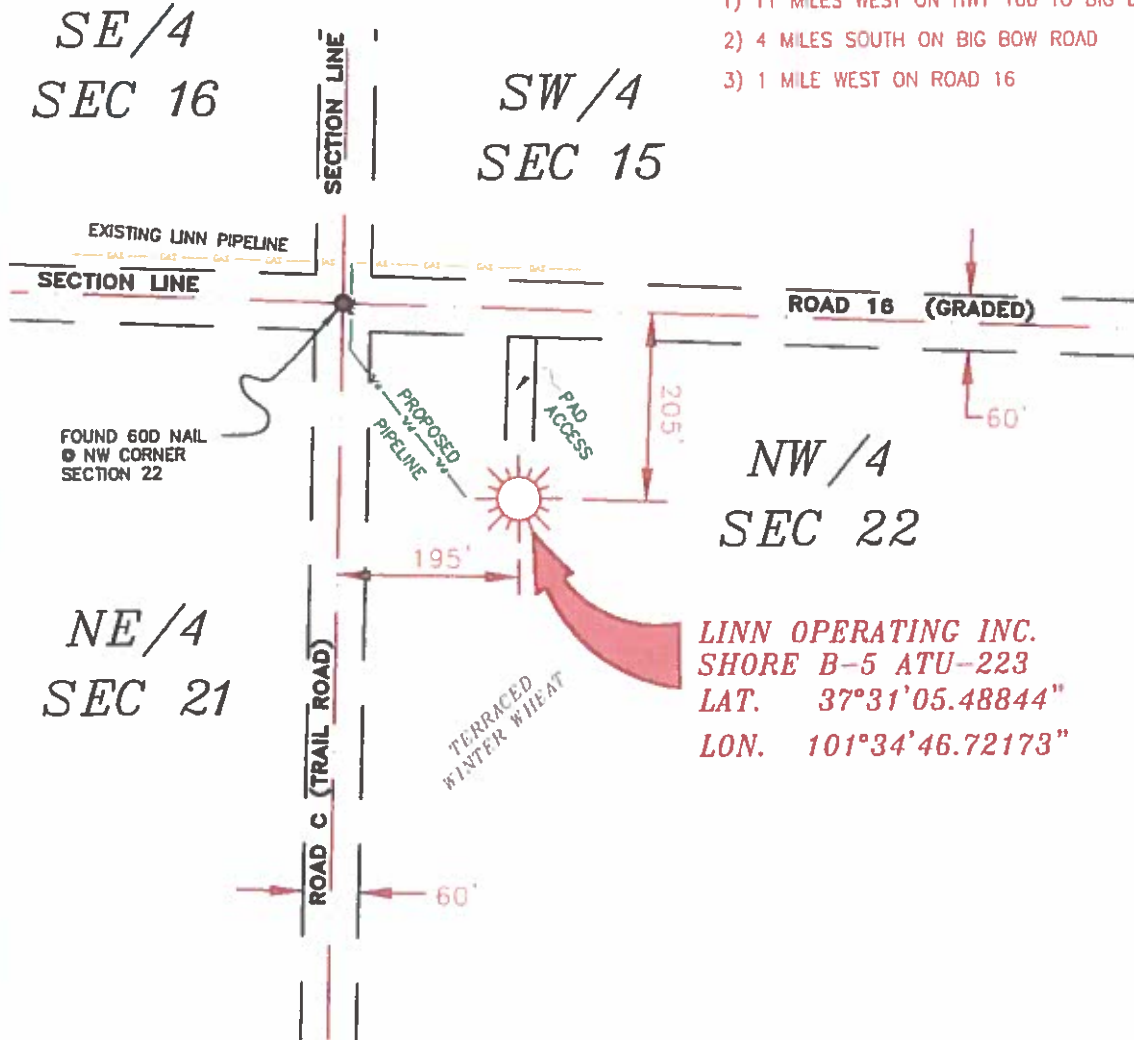
DRAWN BY: DWH
 APPROVED BY: JCK
 SCALE: 1" = 200'
 DATE: 12/16/13

LINN Energy

2225 W. OKLAHOMA AVE.
 ULYSSES, KANSAS 67880
 PH: (620)356-6940
 FAX: (620)356-6950

DRIVING DIRECTIONS:

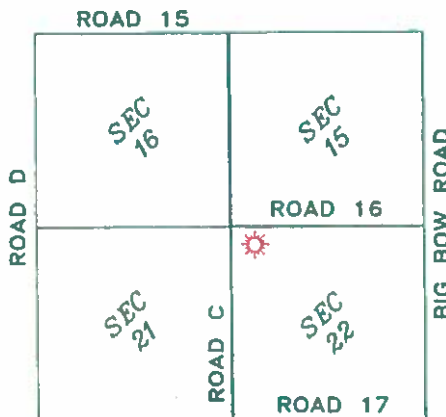
- BEGINNING AT INTERSECTION OF US HWY 160 & HWY 25
- 1) 11 MILES WEST ON HWY 160 TO BIG BOW ROAD
 - 2) 4 MILES SOUTH ON BIG BOW ROAD
 - 3) 1 MILE WEST ON ROAD 16



LINN OPERATING INC.
SHORE B-5 ATU-223
 LAT. 37°31'05.48844"
 LON. 101°34'46.72173"

NOTES:

- 1) THIS PLAN DOES NOT REPRESENT A TRUE BOUNDARY SURVEY. THE FOOTNOTES AND TIES SHOWN ARE FROM LINES OF OCCUPATION WHICH MAY NOT BE ACTUAL PROPERTY LINES.
- 2) CONTRACTOR TO CONTACT ENGINEER CALL FOR PRECISE UTILITY LOCATIONS PRIOR TO ANY EXCAVATION OR CONSTRUCTION.
- 3) HAD 27 JAT-LONG



T-29-S, R-39-W
 STANTON COUNTY, KANSAS



JOHN DAVID KELLER, L.S. NO. 1518

LINN OPERATING INC.
SHORE B-5 ATU-223
 SECTION 15, 16, 21 & 22
 T-29-S, R-39-W
 STANTON COUNTY, KANSAS

PLAT AND CERTIFICATION OF ACREAGE ATTRIBUTABLE TO A GAS WELL

Kansas Corporation Commission, Conservation Division
 Finney State Office Building, 130 South Market, Room 2078
 Wichita, Kansas 67202

API NUMBER 15- _____

LOCATION OF WELL: COUNTY Stanton

OPERATOR LINN Operating, Inc.

205 N feet from south/north line of section

LEASE Shore

195 W feet from east / west line of section

WELL NUMBER B-5 ATU-223

FIELD Hugoton-Panoma

SECTION 22 TWP 29 (S) RG 39W E/W

NUMBER OF ACRES ATTRIBUTABLE TO WELL 640

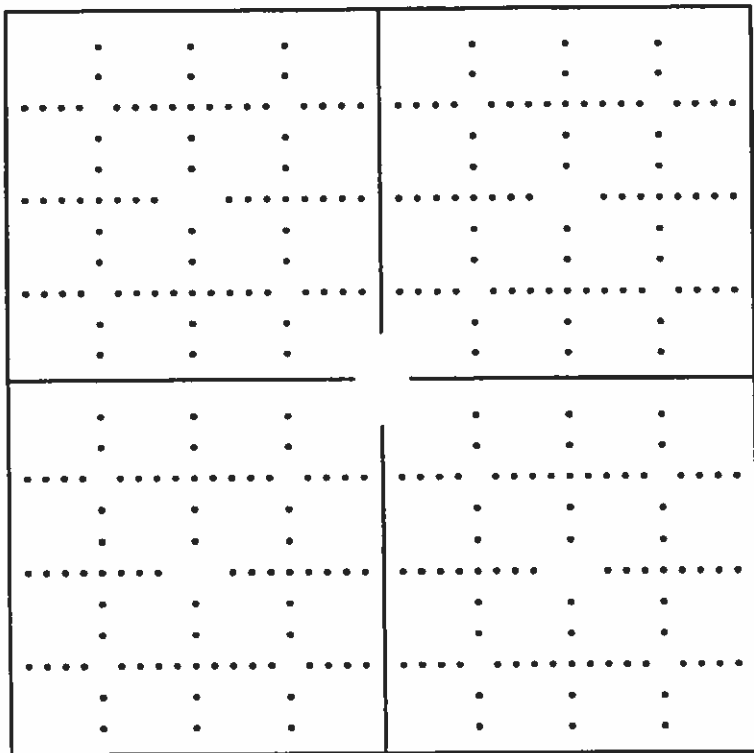
IS SECTION X REGULAR or _____ IRREGULAR

QTR/QTR/QTR OF ACREAGE NW - NW - NW

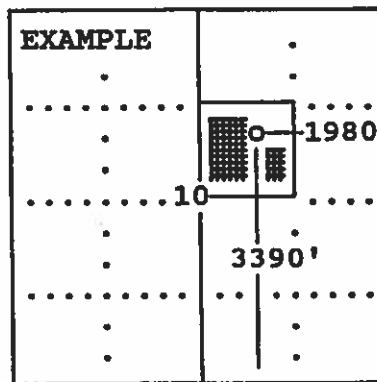
IF SECTION IS IRREGULAR, LOCATE WELL FROM NEAREST CORNER BOUNDARY. (check line below)

Section corner used: NE NW SE SW

(Show the location of the well and shade attributable acreage for prorated or spaced wells).
 (Show the footage to the nearest lease or unit boundary line; and show footage to the nearest common source supply well).



see attached map



SEWARD CO.

The undersigned hereby certifies as Regulatory Compliance Advisor (title) for LINN Operating, Inc.

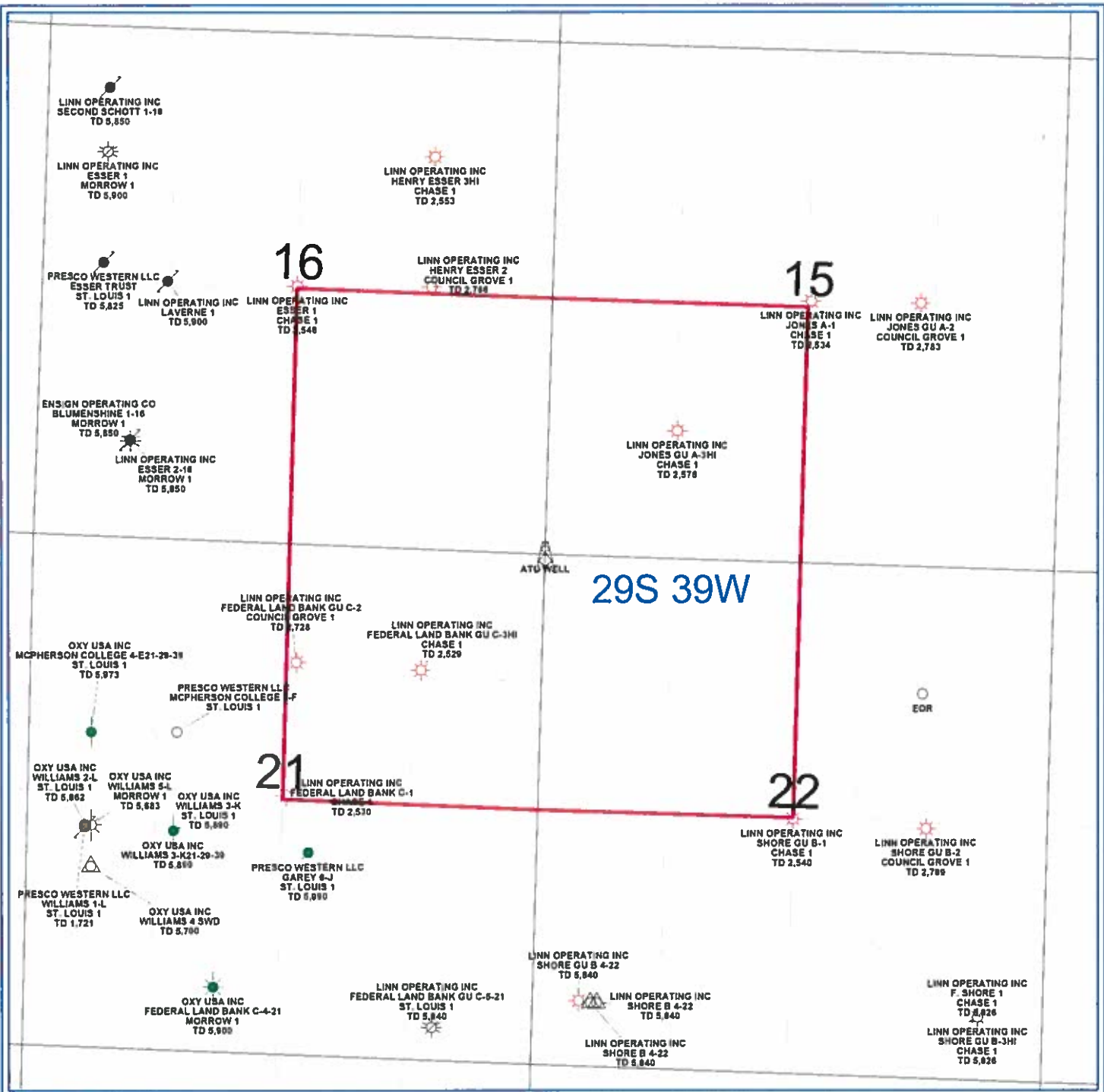
(Co.), a duly authorized agent, that all information shown hereon is true and correct to the best of my knowledge and belief, that all acreage claimed attributable to the well named herein is held by production from that well and hereby make application for an allowable to be assigned to the well upon the filing of this form and the State test, whichever is later.

Signature *Shawn Hiedner*

Subscribed and sworn to before me on this 24th day of March, 19 2014

Arny Belinda Callahan
 Notary Public

My Commission expires 12/27/2015



29S 39W

PETRA 4/24/2015 1:53:43 PM

Linn Operating Inc	
Hugoton Kansas	
ATU Location	
Stanton Co. 29S - 39W	
<p>0 1,452 FEET</p>	
<p>WELL SYMBOLS</p> <ul style="list-style-type: none"> ABANDONED LOCATION Abandoned Well ATU Well Location Gas Well Oil Well Plugged and Abandoned Plugged & Abandoned Gas Well Plugged & Abandoned Oil Well Service Well Suspended Gas Well Suspended Oil & Gas Well Suspended Oil Well 	