



DRILL STEM TEST REPORT

Prepared For: **Shelby Resources LLC**

2717 Canal Blvd Suite C
Hays Ks, 67601

ATTN: Jeremy Schwartz

Fenwick #1-35

35/21s/16w/Pawnee

Start Date: 2014.02.25 @ 12:20:00

End Date: 2014.02.25 @ 23:48:00

Job Ticket #: 19206 DST #: 4

Superior Testers Enterprises LLC
PO Box 138 Great Bend KS 67530
1-800-792-6902

Printed: 2014.02.26 @ 01:06:56



DRILL STEM TEST REPORT

Shelby Resources LLC
 2717 Canal Blvd Suite C
 Hays Ks. 67601
 ATTN: Jeremy Schwartz

35/21s/16w/Pawnee
Fenwick #1-35
 Job Ticket: 19206 **DST#: 4**
 Test Start: 2014.02.25 @ 12:20:00

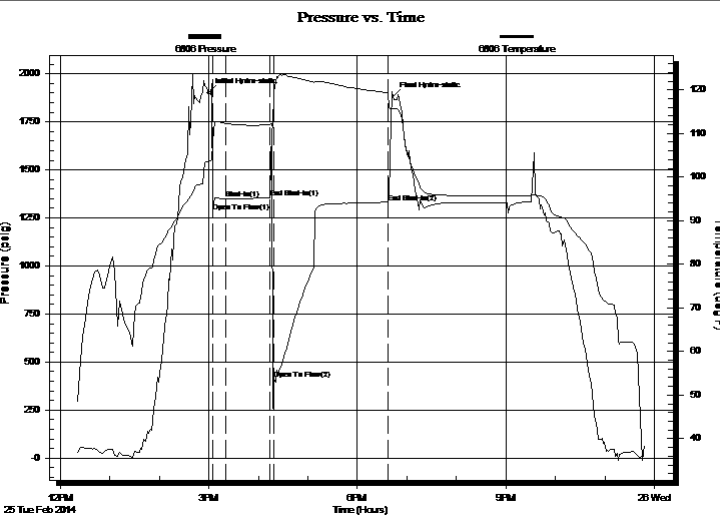
GENERAL INFORMATION:

Formation: **Arbuckle**
 Deviated: No Whipstock: ft (KB)
 Time Tool Opened: 15:05:00
 Time Test Ended: 23:48:00
 Test Type: Conventional Bottom Hole (Initial)
 Tester: Shane Konzem
 Unit No: 3330/60/Great Bend
 Interval: **3924.00 ft (KB) To 3931.00 ft (KB) (TVD)**
 Total Depth: 3931.00 ft (KB) (TVD)
 Reference Elevations: 1988.00 ft (KB)
 1975.00 ft (CF)
 Hole Diameter: 7.88 inches Hole Condition: Poor
 KB to GR/CF: 13.00 ft

Serial #: 6806 Inside

Press@RunDepth: 1348.66 psig @ 3927.00 ft (KB) Capacity: 5000.00 psig
 Start Date: 2014.02.25 End Date: 2014.02.25 Last Calib.: 2014.02.26
 Start Time: 12:20:00 End Time: 23:48:00 Time On Btm: 2014.02.25 @ 14:59:30
 Time Off Btm: 2014.02.25 @ 18:43:00

TEST COMMENT: 1st Open/ 15 Minutes. Weak blow built to 2 inches into bucket of deisel.
 1st Shut In/ 45 Minutes. No blow back.
 2nd Open/ 45 Minutes. No blow, flushed tool and gained good blow to bottom of 5 gallon bucket of deisel.
 2nd Shut In/ 90 Minutes. Blow back built to 2 inches into bucket of deisel.



PRESSURE SUMMARY			
Time (Min.)	Pressure (psig)	Temp (deg F)	Annotation
0	1902.31	103.68	Initial Hydro-static
6	1281.08	107.71	Open To Flow (1)
21	1348.66	112.27	Shut-In(1)
75	1352.46	111.97	End Shut-In(1)
80	408.70	119.68	Open To Flow (2)
217	1331.59	119.35	End Shut-In(2)
224	1882.89	115.62	Final Hydro-static

Recovery		
Length (ft)	Description	Volume (bbl)
2709.00	Clean oil	35.00
0.00	reversed fluid to truck due to presence of H2S gas.	0.00
0.00	Oil corrected gravity w as 42.	0.00

Gas Rates			
	Choke (inches)	Pressure (psig)	Gas Rate (Mcf/d)



DRILL STEM TEST REPORT

Shelby Resources LLC
 2717 Canal Blvd Suite C
 Hays Ks. 67601
 ATTN: Jeremy Schwartz

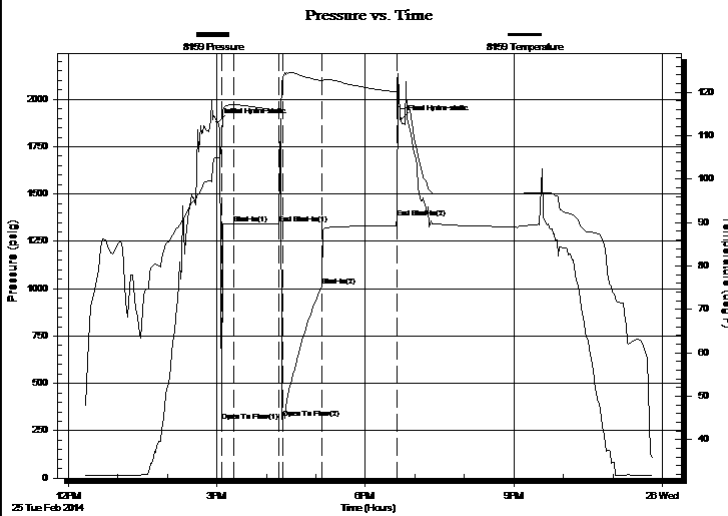
35/21s/16w/Pawnee
Fenwick #1-35
 Job Ticket: 19206 **DST#: 4**
 Test Start: 2014.02.25 @ 12:20:00

GENERAL INFORMATION:

Formation: **Arbuckle**
 Deviated: No Whipstock: ft (KB)
 Test Type: Conventional Bottom Hole (Initial)
 Time Tool Opened: 15:05:00 Tester: Shane Konzem
 Time Test Ended: 23:48:00 Unit No: 3330/60/Great Bend
 Interval: **3924.00 ft (KB) To 3931.00 ft (KB) (TVD)** Reference Elevations: 1988.00 ft (KB)
 Total Depth: 3931.00 ft (KB) (TVD) 1975.00 ft (CF)
 Hole Diameter: 7.88 inches Hole Condition: Poor KB to GR/CF: 13.00 ft

Serial #: 8159 Outside
 Press@RunDepth: 1377.08 psig @ 3928.00 ft (KB) Capacity: 5000.00 psig
 Start Date: 2014.02.25 End Date: 2014.02.25 Last Calib.: 2014.02.26
 Start Time: 12:20:00 End Time: 23:49:00 Time On Btm: 2014.02.25 @ 15:01:00
 Time Off Btm: 2014.02.25 @ 18:43:00

TEST COMMENT: 1st Open/ 15 Minutes. Weak blow built to 2 inches into bucket of deisel.
 1st Shut In/ 45 Minutes. No blow back.
 2nd Open/ 45 Minutes. No blow, flushed tool and gained good blow to bottom of 5 gallon bucket of deisel.
 2nd Shut In/ 90 Minutes. Blow back built to 2 inches into bucket of deisel.



PRESSURE SUMMARY

Time (Min.)	Pressure (psig)	Temp (deg F)	Annotation
0	1877.51	104.87	Initial Hydro-static
5	300.56	108.21	Open To Flow (1)
20	1343.33	117.16	Shut-In(1)
74	1343.32	115.79	End Shut-In(1)
79	316.57	123.63	Open To Flow (2)
127	1016.25	122.64	Shut-In(2)
217	1377.08	119.96	End Shut-In(2)
222	1893.94	116.30	Final Hydro-static

Recovery

Length (ft)	Description	Volume (bbl)
2709.00	Clean oil	35.00
0.00	reversed fluid to truck due to presence of H2S gas.	0.00
0.00	Oil corrected gravity w as 42.	0.00

Gas Rates

	Choke (inches)	Pressure (psig)	Gas Rate (Mcf/d)



DRILL STEM TEST REPORT

TOOL DIAGRAM

Shelby Resources LLC

35/21s/16w/Pawnee

2717 Canal Blvd Suite C
Hays Ks. 67601

Fenwick #1-35

Job Ticket: 19206

DST#: 4

ATTN: Jeremy Schwartz

Test Start: 2014.02.25 @ 12:20:00

Tool Information

Drill Pipe:	Length: 3595.00 ft	Diameter: 3.80 inches	Volume: 50.43 bbl	Tool Weight: 2000.00 lb
Heavy Wt. Pipe:	Length: 0.00 ft	Diameter: 0.00 inches	Volume: 0.00 bbl	Weight set on Packer: 25000.00 lb
Drill Collar:	Length: 329.61 ft	Diameter: 2.25 inches	Volume: 1.62 bbl	Weight to Pull Loose: 110000.0 lb
			<u>Total Volume: 52.05 bbl</u>	Tool Chased 0.00 ft
Drill Pipe Above KB:	28.61 ft			String Weight: Initial 78000.00 lb
Depth to Top Packer:	3924.00 ft			Final 84000.00 lb
Depth to Bottom Packer:	ft			
Interval between Packers:	7.00 ft			
Tool Length:	35.00 ft			
Number of Packers:	1	Diameter: 6.75 inches		

Tool Comments:

Tool Description	Length (ft)	Serial No.	Position	Depth (ft)	Accum. Lengths
Shut-In Tool	5.00			3901.00	
Hydraulic tool	5.00			3906.00	
Jars	6.00			3912.00	
Safety Joint	2.00			3914.00	
Top Packer	5.00			3919.00	
Packer	5.00			3924.00	28.00 Bottom Of Top Packer
Anchor	2.00			3926.00	
Recorder	1.00	6806	Inside	3927.00	
Recorder	1.00	8159	Outside	3928.00	
Bull Plug	3.00			3931.00	7.00 Anchor Tool
Total Tool Length:	35.00				



DRILL STEM TEST REPORT

FLUID SUMMARY

Shelby Resources LLC

35/21s/16w/Pawnee

2717 Canal Blvd Suite C
Hays Ks. 67601

Fenwick #1-35

Job Ticket: 19206

DST#: 4

ATTN: Jeremy Schwartz

Test Start: 2014.02.25 @ 12:20:00

Mud and Cushion Information

Mud Type: Gel Chem

Cushion Type:

Oil API:

deg API

Mud Weight: 9.00 lb/gal

Cushion Length:

ft

Water Salinity:

ppm

Viscosity: 68.00 sec/qt

Cushion Volume:

bbbl

Water Loss: 6.39 in³

Gas Cushion Type:

Resistivity: ohm.m

Gas Cushion Pressure:

psig

Salinity: 4800.00 ppm

Filter Cake: 1.00 inches

Recovery Information

Recovery Table

Length ft	Description	Volume bbl
2709.00	Clean oil	34.998
0.00	reversed fluid to truck due to presence	0.000
0.00	of H2S gas.	0.000
0.00	Oil corrected gravity w as 42.	0.000

Total Length: 2709.00 ft

Total Volume: 34.998 bbl

Num Fluid Samples: 0

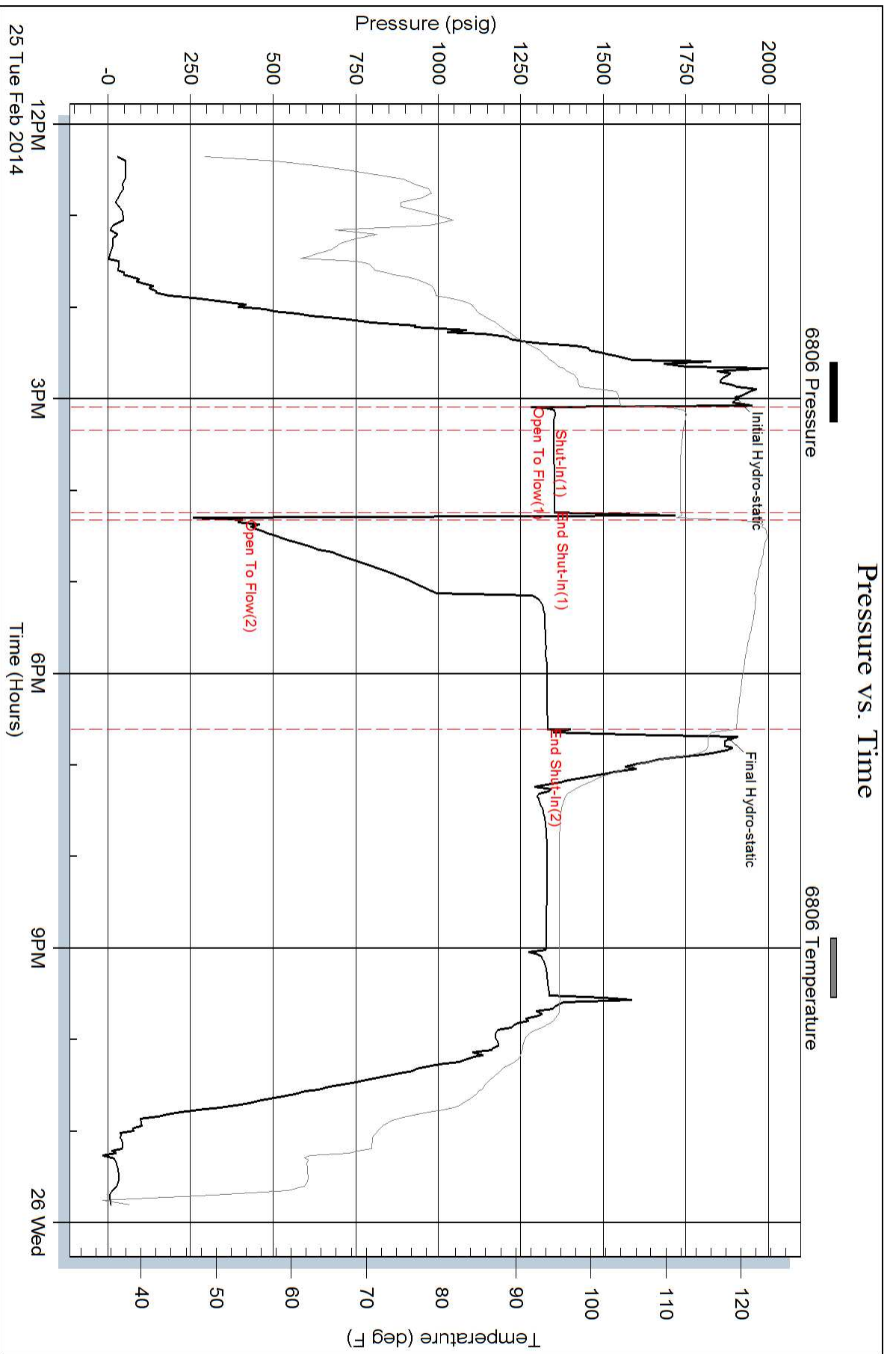
Num Gas Bombs: 0

Serial #:

Laboratory Name:

Laboratory Location:

Recovery Comments:



Pressure vs. Time

