



Geologist's Report

Company: **Blueridge Petroleum Corporation**  
 Lease: **Smith #2-11**  
 Field: **Pollnow Southeast**  
 Location: **NW-SW-NW-NE (828 FNL & 2313 FEL)**  
 Sec: **11** Twsp: **3S** Rge: **29W**  
 County: **Decatur** State: **Kansas**  
 GL: **2589** KB: **2598**



Contractor: **Southwind Drilling Rig #8**  
 Spud: **2/17/14** Comp: **2/24/14**  
 RTD: **3860** LTD: **3859**  
 Mud Up: **3200'** Type Mud: **Chemical/Displaced**

Samples Saved From: **3200' to RTD**  
 Drilling Time Kept From: **3200' to RTD**  
 Samples Examined From: **3300' to RTD**  
 Geological Supervision From: **3300' to RTD**  
 Geologist on Well: **Clint Musgrove**

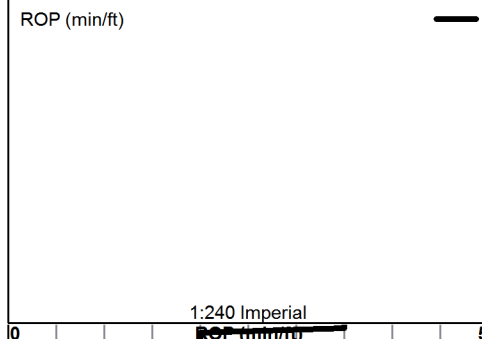
Surface Casing: **8 5/8" @ 223'**  
 Production: **5 1/2 @ 3859**

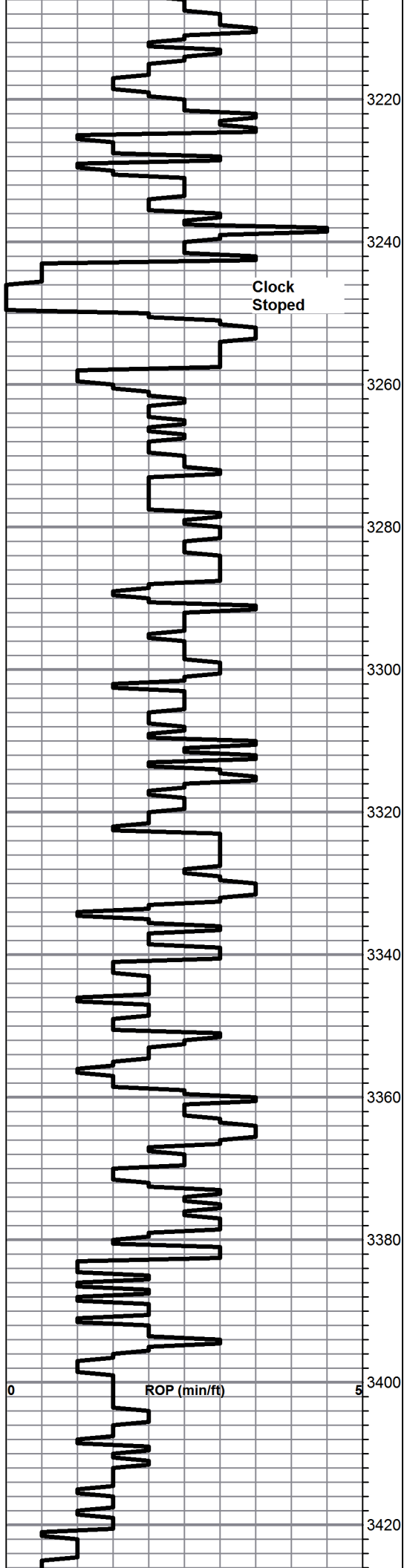
Logs: **By Nabors: CNL/CDL, DIL, MEL, SONIC**

OTHER SYMBOLS

DST  
 DST Int  
 DST alt

Printed by GEOstrip VC Striplog version 4.0.7.0 (www.grsi.ca)

Drill Time	Depth	DST	Lithology	Oil Show	Geological Descriptions	DST Description
ROP (min/ft) 	Cored Interval DST Interval					



**-2598 KB-**

LS; tan/gry, fxl, foss, poor vis  
porosity

LS: gry, fxl, cherty in part, poor  
porosity n/s

LS crm, fxl, foss n/s

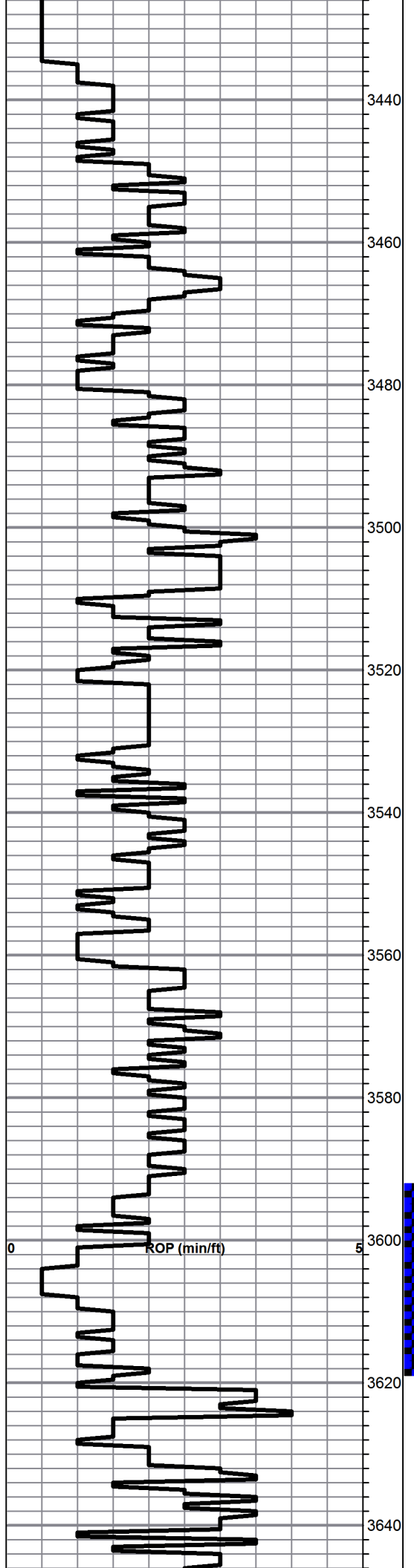
LS crm, fxl, cherty, poor vis  
porosity n/s

LS; crm, tan, foss, dense, n/s

LS; crm/tan, cherty, chalky, n/s

LS; wh, crm, ool in part, n/s no odor

LS; wh/crm, fxl, dense n/s



Sand, wh, f grain, well sorted poor porosity, n/s

Red sh

LS; wh, fxl, foss in part, poor vis porosity

AA

LS; wh/gry, fxl, foss, cherty, n/s

LS; tan, fxl, chalky poor porosity, n/s

LS; tan, fxl, foss, chlky, n/s

LS; crm, med xln, dense, poor porosity n/s

LS; wh/crm, fxl, chlky, poor vis porosity, tr bk stn ns

**Heebner 3564.0 (-966.0) -964.0**

Blk carb sh

Shale- gry soft

**Toronto 3591.0 (-994.0) -994.0**

LS; crm/wh, foss, ool, scatt porosity n/s

**Lansing 3602.0 (-1004.0) -1004.0**

- LS; wh/crm, fxl, ool, good porosity, very ft odor, sfo
- 

- LS; wh/crm, fxl, fair ool porosity, good brn/blk stn. odor when samples broken, good sfo
- 

- LS; crm/wh, fxl, scatt vug porosity, heavy brn/blk stn, ool, ft odor, sfo
- 

**DST #1 3592-3618  
30-45-45-60**

Blow: strong BOB 7.5 min  
2nd Opening: weak 3/4"

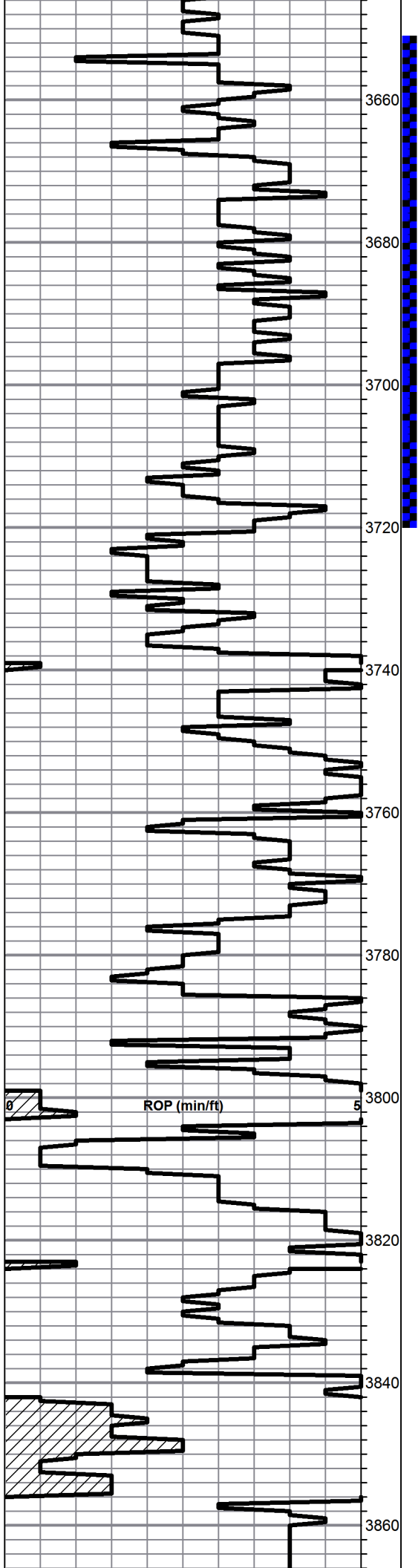
Recovery:  
2' clean oil (99%O, 1%G)  
8' MCO (55%O, 45% M)  
63' SGMCW (5%G, 55%W, 40%M)  
504' MCW (90%W, 10%M)

Pressures:  
ISIP: 1269 psi  
FSIP: 1265 psi  
IFP: 69-166 psi  
FFP: 150-290 psi  
HSH: 1767-1265 psi

**DST #2 3623-3640  
30-30-30-45**

Blow: strong BOB instantly  
2nd Opening: strong BOB 1.5 min

Recovery:



LS; crm/wh, fxl, scatt vug porosity, blk stn, no odor

2046' gassy oil (85% O, 15%G)  
2849' GIP

LS; crm/wh/gry/, fxl, scatt porosity, chlky, ft brn stn, weak sfo

Pressures:  
ISIP: 965 psi  
FSIP: 977 psi  
IFP: 175-512 psi  
FFP: 534-732 psi  
HSH: 1772-1740 psi

LS; wh/crm, fxl, chalky, scatt porosity, n/s, no odor

LS; crm/tan, fxl, vug porosity, ft blk stn, no odor

**DST #3 3652-3720**  
**30-30-30-30**

Blow: weak 3/4"  
2nd Opening: no blow

Sh; red/gry soft, tr blk stn no odor

- 
- 
- 
- 
- 
- 

LS; crm, fxl, ool in part, sfo, no odor

Recovery:  
5' Mud w/ oil spots (100%M)

LS; crm, fxl, scatt porosity, cherty, sfo, no odor

Pressures:  
ISIP: 322 psi  
FSIP: 146 psi  
IFP: 17-17 psi  
FFP: 18-18 psi  
HSH: 1786-1760 psi

LS; crm, ppt porosity, fxl, n/s

LS; crm, fxl, cherty, poor vis porosity n/s

LS; crm, fxl, ft blk stn, n/s, no odor red sh

**Stark 3756.0 (-1158.0) -1160.0**

LS; crm, fxl, cherty, chalky, poor vis porosity

Sh; red/gry

LS; crm, fxl, cherty, dense, poor vis porosity, n/s

LS; crm, fxl, chlky, dense, n/s

Sh. red/gry soft

**BKC 3803.0 (-1205.0) -1206.0**

LS; gry/tan, fxl, dense, poor vis porosity

LS; wh/crm, fxl, chlky, poor vis porosity n/s, no odor

Sh. red/gry soft

LS;crm/tan, fxl, dense, poor vis porosity

**RTD 3860.0 (-1262.0) 0.0**

