



## DRILL STEM TEST REPORT

Prepared For: **Blue Ridge Petroleum Corp.**

PO Box 1913  
Enid OK 73702

ATTN: Clint Musgrove

**Smith #2-11**

**11 3s 29w Decatur KS**

Start Date: 2014.02.22 @ 00:08:00

End Date: 2014.02.22 @ 08:29:30

Job Ticket #: 56756                      DST #: 1

Trilobite Testing, Inc

PO Box 362 Hays, KS 67601

ph: 785-625-4778 fax: 785-625-5620

Printed: 2014.02.26 @ 14:36:42



**TRILOBITE TESTING, INC**

# DRILL STEM TEST REPORT

Blue Ridge Petroleum Corp.

**11 3s 29w Decatur KS**

PO Box 1913  
Enid OK 73702

**Smith #2-11**

Job Ticket: 56756

**DST#: 1**

ATTN: Clint Musgrove

Test Start: 2014.02.22 @ 00:08:00

## GENERAL INFORMATION:

Formation: **LKC "A"**

Deviated: No Whipstock: ft (KB)

Time Tool Opened: 02:46:30

Time Test Ended: 08:29:30

Test Type: Conventional Bottom Hole (Initial)

Tester: Robert Zodrow

Unit No: 57

**Interval: 3592.00 ft (KB) To 3618.00 ft (KB) (TVD)**

Reference Elevations: 2598.00 ft (KB)

Total Depth: 3618.00 ft (KB) (TVD)

2589.00 ft (CF)

Hole Diameter: 7.88 inches Hole Condition: Fair

KB to GR/CF: 9.00 ft

**Serial #: 8320 Outside**

Press@RunDepth: 289.89 psig @ 3593.00 ft (KB)

Capacity: 8000.00 psig

Start Date: 2014.02.22

End Date:

2014.02.22

Last Calib.:

2014.02.22

Start Time: 00:08:05

End Time:

08:29:29

Time On Btm:

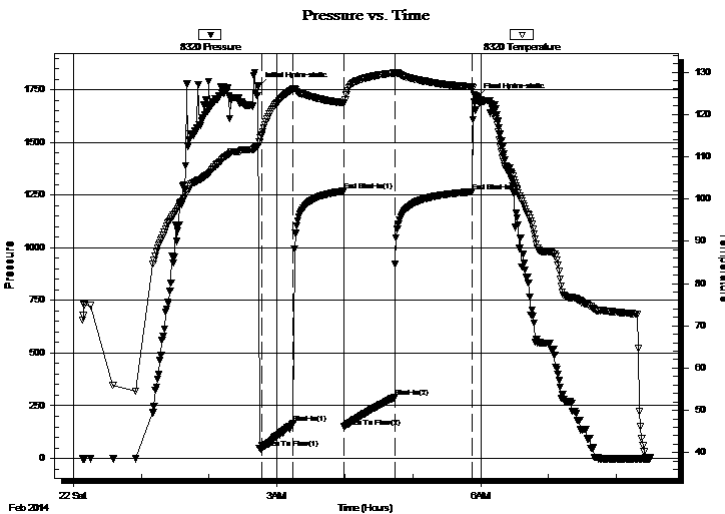
2014.02.22 @ 02:43:30

Time Off Btm:

2014.02.22 @ 05:56:30

**TEST COMMENT:** 30-IF-BOB 7 1/2 min  
45-ISI- No Return  
45-FF- 3/4" Blow Died Back To 1/2"  
60-FSI- No Return

## PRESSURE SUMMARY



Time (Min.)	Pressure (psig)	Temp (deg F)	Annotation
0	1766.81	112.55	Initial Hydro-static
3	48.74	115.16	Open To Flow (1)
31	165.85	125.96	Shut-In(1)
76	1268.81	122.69	End Shut-In(1)
76	150.05	122.50	Open To Flow (2)
121	289.89	129.81	Shut-In(2)
189	1265.97	126.48	End Shut-In(2)
193	1711.21	123.28	Final Hydro-static

## Recovery

Length (ft)	Description	Volume (bbl)
504.00	MCW 10% m 90% w	7.37
63.00	slightly gas MCW 5% g 40% m 55% w	0.92
8.00	MCO 45% m 55% o	0.12
2.00	clean oil 1% g 99% o	0.03

## Gas Rates

	Choke (inches)	Pressure (psig)	Gas Rate (Mcf/d)





**TRILOBITE  
TESTING, INC**

# DRILL STEM TEST REPORT

**TOOL DIAGRAM**

Blue Ridge Petroleum Corp.

**11 3s 29w Decatur KS**

PO Box 1913  
Enid OK 73702

**Smith #2-11**

Job Ticket: 56756

**DST#: 1**

ATTN: Clint Musgrove

Test Start: 2014.02.22 @ 00:08:00

## Tool Information

Drill Pipe:	Length: 3576.00 ft	Diameter: 3.88 inches	Volume: 52.30 bbl	Tool Weight:	2500.00 lb
Heavy Wt. Pipe:	Length: 0.00 ft	Diameter: 0.00 inches	Volume: 0.00 bbl	Weight set on Packer:	25000.00 lb
Drill Collar:	Length: 0.00 ft	Diameter: 2.25 inches	Volume: 0.00 bbl	Weight to Pull Loose:	56000.00 lb
			<u>Total Volume: 52.30 bbl</u>	Tool Chased	ft
Drill Pipe Above KB:	4.00 ft			String Weight: Initial	42000.00 lb
Depth to Top Packer:	3592.00 ft			Final	43000.00 lb
Depth to Bottom Packer:	ft				
Interval between Packers:	26.00 ft				
Tool Length:	46.00 ft				
Number of Packers:	2	Diameter: 6.75 inches			
Tool Comments:					

## Tool Description

Tool Description	Length (ft)	Serial No.	Position	Depth (ft)	Accum. Lengths
Shut In Tool	5.00			3577.00	
Hydraulic tool	5.00			3582.00	
Packer	5.00			3587.00	20.00 Bottom Of Top Packer
Packer	5.00			3592.00	
Stubb	1.00			3593.00	
Recorder	0.00	8671	Inside	3593.00	
Recorder	0.00	8320	Outside	3593.00	
Perforations	22.00			3615.00	
Bullnose	3.00			3618.00	26.00 Bottom Packers & Anchor
<b>Total Tool Length:</b>	<b>46.00</b>				



**TRILOBITE  
TESTING, INC**

# DRILL STEM TEST REPORT

**FLUID SUMMARY**

Blue Ridge Petroleum Corp.

**11 3s 29w Decatur KS**

PO Box 1913  
Enid OK 73702

**Smith #2-11**

Job Ticket: 56756

**DST#: 1**

ATTN: Clint Musgrove

Test Start: 2014.02.22 @ 00:08:00

## Mud and Cushion Information

Mud Type: Gel Chem

Cushion Type:

Oil API:

26 deg API

Mud Weight: 9.00 lb/gal

Cushion Length:

ft

Water Salinity:

14000 ppm

Viscosity: 57.00 sec/qt

Cushion Volume:

bbbl

Water Loss: 5.58 in<sup>3</sup>

Gas Cushion Type:

Resistivity: ohm.m

Gas Cushion Pressure:

psig

Salinity: 1100.00 ppm

Filter Cake: 1.00 inches

## Recovery Information

Recovery Table

Length ft	Description	Volume bbl
504.00	MCW 10%m 90% w	7.371
63.00	slightly gas MCW 5%g 40%m 55%w	0.921
8.00	MCO 45%m 55%o	0.117
2.00	clean oil 1%g 99%o	0.029

Total Length: 577.00 ft      Total Volume: 8.438 bbl

Num Fluid Samples: 0

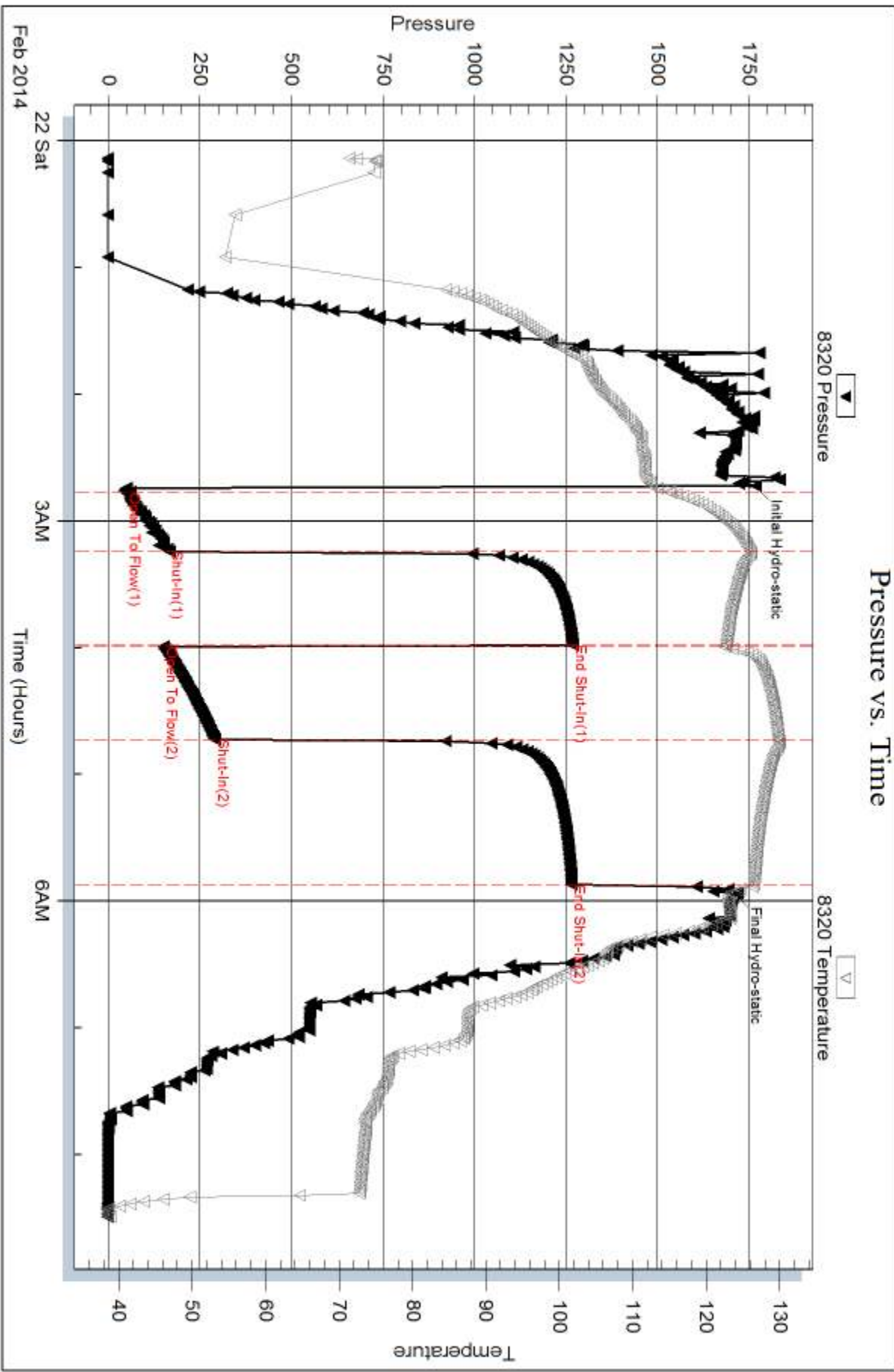
Num Gas Bombs: 0

Serial #:

Laboratory Name:

Laboratory Location:

Recovery Comments: Gravity = 26 api @ 60 deg F  
RW .4 ohms @ 59 deg F



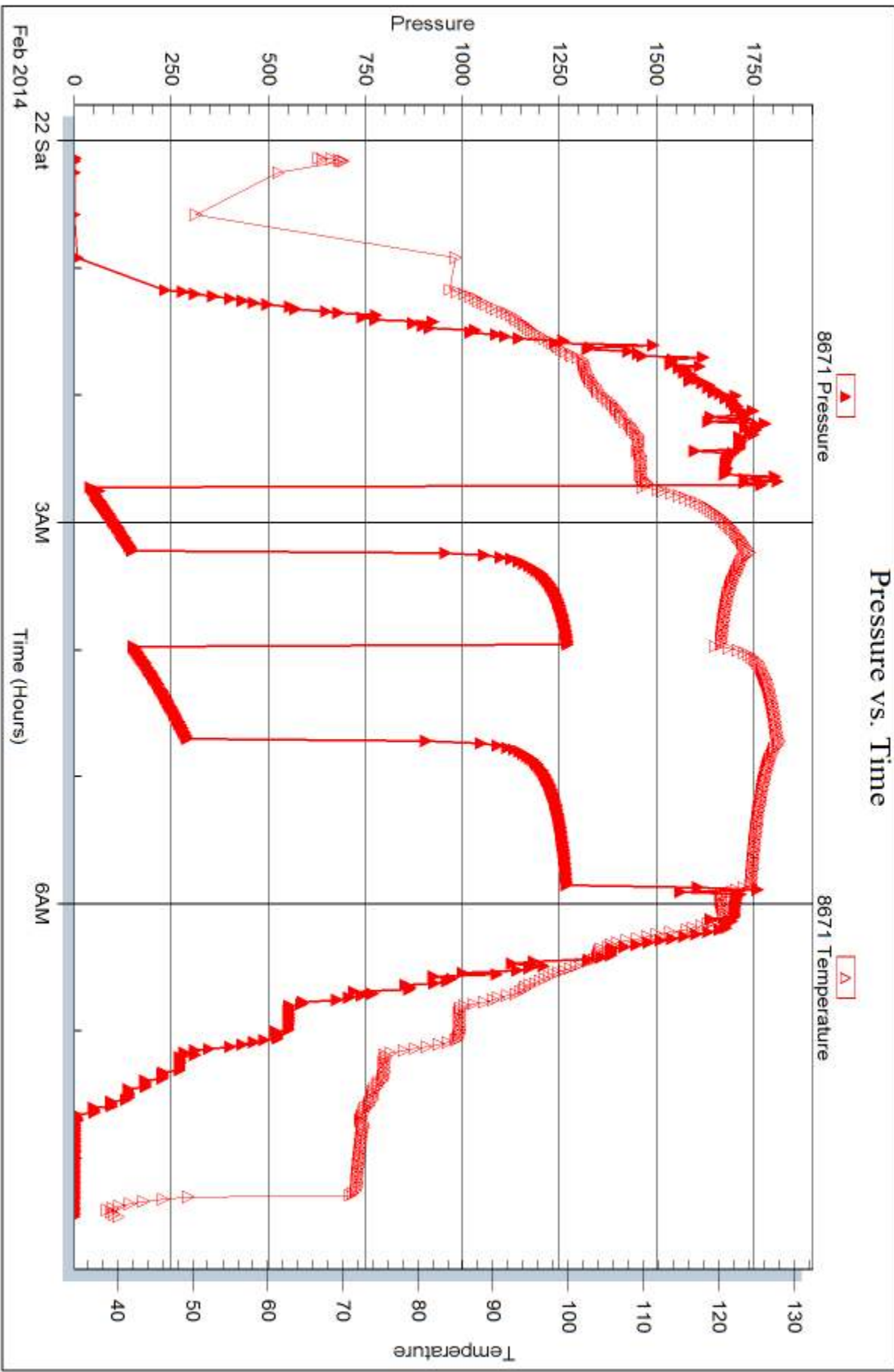
Serial #: 8671

Inside

Blue Ridge Petroleum Corp.

Smith #2-11

DST Test Number: 1



Triobite Testing, Inc

Ref. No: 56756

Printed: 2014.02.26 @ 14:36:45



## DRILL STEM TEST REPORT

Prepared For: **Blue Ridge Petroleum Corp.**

PO Box 1913  
Enid OK 73702

ATTN: Clint Musgrove

**Smith #2-11**

**11 3s 29w Decatur KS**

Start Date: 2014.02.22 @ 15:28:00

End Date: 2014.02.23 @ 00:04:15

Job Ticket #: 56757                      DST #: 2

Trilobite Testing, Inc  
PO Box 362 Hays, KS 67601  
ph: 785-625-4778 fax: 785-625-5620

Printed: 2014.02.26 @ 14:35:35





**TRILOBITE TESTING, INC**

# DRILL STEM TEST REPORT

Blue Ridge Petroleum Corp.

**11 3s 29w Decatur KS**

PO Box 1913  
Enid OK 73702

**Smith #2-11**

Job Ticket: 56757

**DST#: 2**

ATTN: Clint Musgrove

Test Start: 2014.02.22 @ 15:28:00

## GENERAL INFORMATION:

Formation: **LKC " B&C"**

Deviated: No Whipstock: ft (KB)

Time Tool Opened: 17:23:15

Time Test Ended: 00:04:15

Test Type: Conventional Bottom Hole (Reset)

Tester: Robert Zodrow

Unit No: 57

**Interval: 3623.00 ft (KB) To 3640.00 ft (KB) (TVD)**

Reference Elevations: 2598.00 ft (KB)

Total Depth: 3640.00 ft (KB) (TVD)

2589.00 ft (CF)

Hole Diameter: 7.88 inches Hole Condition: Fair

KB to GR/CF: 9.00 ft

**Serial #: 8671**

**Inside**

Press@RunDepth: 732.10 psig @ 3624.00 ft (KB)

Capacity: 8000.00 psig

Start Date: 2014.02.22

End Date:

2014.02.23

Last Calib.:

2014.02.23

Start Time: 15:28:05

End Time:

00:04:15

Time On Btm:

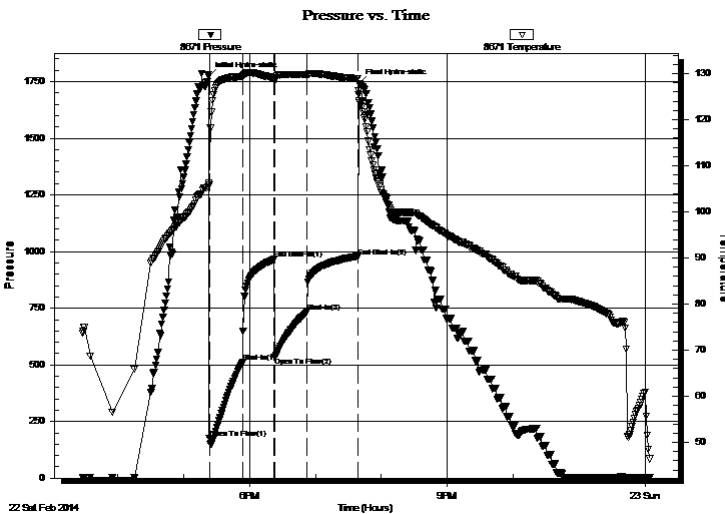
2014.02.22 @ 17:23:00

Time Off Btm:

2014.02.22 @ 19:40:00

**TEST COMMENT:** 30-IF- BOB immediately  
30-ISI-BOB In 20 Mins.  
30-FF-Bob In 1 min. 30 sec.  
45-FSI-BOB in 14 mins.

## PRESSURE SUMMARY



Time (Min.)	Pressure (psig)	Temp (deg F)	Annotation
0	1772.36	106.22	Initial Hydro-static
1	174.91	105.88	Open To Flow (1)
31	512.28	129.37	Shut-In(1)
60	965.31	129.01	End Shut-In(1)
60	533.82	128.73	Open To Flow (2)
90	732.10	129.76	Shut-In(2)
136	976.89	128.87	End Shut-In(2)
137	1740.94	124.12	Final Hydro-static

## Recovery

Length (ft)	Description	Volume (bbl)
2046.00	gassy oil 15%g 85%o	29.92
0.00	GIP = 380'	0.00

\* Recovery from multiple tests

## Gas Rates

	Choke (inches)	Pressure (psig)	Gas Rate (Mcf/d)





**TRILOBITE  
TESTING, INC**

# DRILL STEM TEST REPORT

**TOOL DIAGRAM**

Blue Ridge Petroleum Corp.

**11 3s 29w Decatur KS**

PO Box 1913  
Enid OK 73702

**Smith #2-11**

Job Ticket: 56757

**DST#: 2**

ATTN: Clint Musgrove

Test Start: 2014.02.22 @ 15:28:00

## Tool Information

Drill Pipe:	Length: 3607.00 ft	Diameter: 3.88 inches	Volume: 52.75 bbl	Tool Weight: 2500.00 lb
Heavy Wt. Pipe:	Length: 0.00 ft	Diameter: 0.00 inches	Volume: 0.00 bbl	Weight set on Packer: 25000.00 lb
Drill Collar:	Length: 0.00 ft	Diameter: 2.25 inches	Volume: 0.00 bbl	Weight to Pull Loose: 51000.00 lb
			<u>Total Volume: 52.75 bbl</u>	Tool Chased ft
Drill Pipe Above KB:	4.00 ft			String Weight: Initial 44000.00 lb
Depth to Top Packer:	3623.00 ft			Final 50000.00 lb
Depth to Bottom Packer:	ft			
Interval between Packers:	17.00 ft			
Tool Length:	37.00 ft			
Number of Packers:	2	Diameter: 6.75 inches		

Tool Comments:

## Tool Description

Tool Description	Length (ft)	Serial No.	Position	Depth (ft)	Accum. Lengths
Shut In Tool	5.00			3608.00	
Hydraulic tool	5.00			3613.00	
Packer	5.00			3618.00	20.00 Bottom Of Top Packer
Packer	5.00			3623.00	
Stubb	1.00			3624.00	
Recorder	0.00	8671	Inside	3624.00	
Recorder	0.00	8320	Outside	3624.00	
Perforations	13.00			3637.00	
Bullnose	3.00			3640.00	17.00 Bottom Packers & Anchor
<b>Total Tool Length:</b>	<b>37.00</b>				



**TRILOBITE  
TESTING, INC**

# DRILL STEM TEST REPORT

## FLUID SUMMARY

Blue Ridge Petroleum Corp.

**11 3s 29w Decatur KS**

PO Box 1913  
Enid OK 73702

**Smith #2-11**

Job Ticket: 56757

**DST#: 2**

ATTN: Clint Musgrove

Test Start: 2014.02.22 @ 15:28:00

### Mud and Cushion Information

Mud Type: Gel Chem  
Mud Weight: 9.00 lb/gal  
Viscosity: 5.70 sec/qt  
Water Loss: 5.39 in<sup>3</sup>  
Resistivity: ohm.m  
Salinity: 1000.00 ppm  
Filter Cake: 1.00 inches

Cushion Type:  
Cushion Length: ft  
Cushion Volume: bbl  
Gas Cushion Type:  
Gas Cushion Pressure: psig

Oil API: 35 deg API  
Water Salinity: ppm

### Recovery Information

Recovery Table

Length ft	Description	Volume bbl
2046.00	gassy oil 15%g 85%o	29.921
0.00	GIP = 380'	0.000

Total Length: 2046.00 ft      Total Volume: 29.921 bbl

Num Fluid Samples: 0

Num Gas Bombs: 0

Serial #:

Laboratory Name:

Laboratory Location:

Recovery Comments: gravity =32 api @30 deg

Serial #: 8671

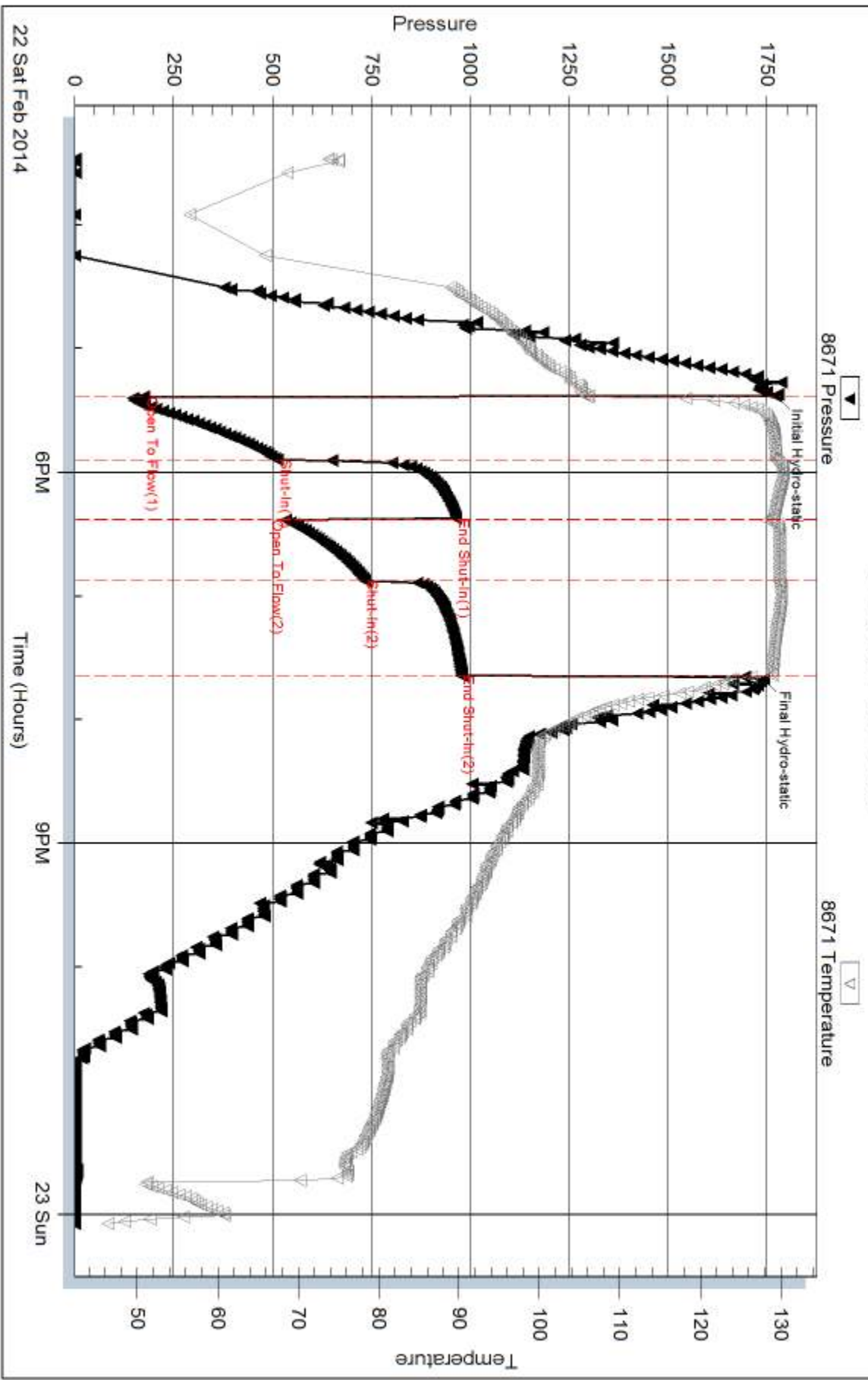
Inside

Blue Ridge Petroleum Corp.

Smith #2-11

DST Test Number: 2

### Pressure vs. Time



Trilobite Testing, Inc

Ref. No: 56757

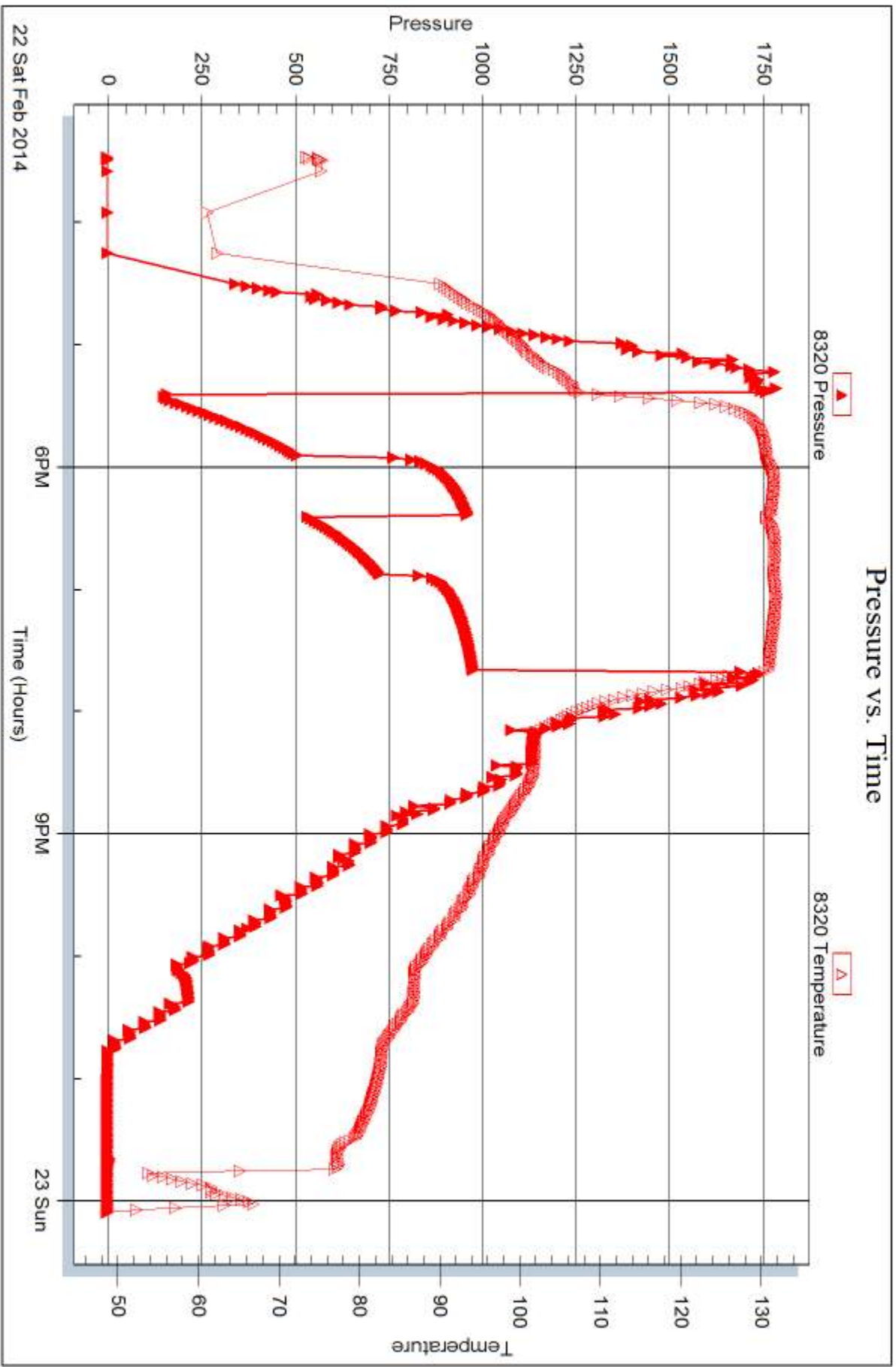
Printed: 2014.02.26 @ 14:35:37

Serial #: 8320

Outside Blue Ridge Petroleum Corp.

Smith #2-11

DST Test Number: 2





## DRILL STEM TEST REPORT

Prepared For: **Blue Ridge Petroleum Corp.**

PO Box 1913  
Enid OK 73702

ATTN: Clint Musgrove

**Smith #2-11**

**11 3s 29w Decatur KS**

Start Date: 2014.02.23 @ 11:00:00

End Date: 2014.02.23 @ 16:51:30

Job Ticket #: 56758                      DST #: 3

Trilobite Testing, Inc  
PO Box 362 Hays, KS 67601  
ph: 785-625-4778 fax: 785-625-5620

Printed: 2014.02.26 @ 14:30:48



**TRILOBITE TESTING, INC.**

# DRILL STEM TEST REPORT

Blue Ridge Petroleum Corp.

**11 3s 29w Decatur KS**

PO Box 1913  
Enid OK 73702

**Smith #2-11**

Job Ticket: 56758

**DST#: 3**

ATTN: Clint Musgrove

Test Start: 2014.02.23 @ 11:00:00

## GENERAL INFORMATION:

Formation: **LKC "D - J"**

Deviated: No Whipstock: ft (KB)

Time Tool Opened: 12:49:15

Time Test Ended: 16:51:30

Test Type: Conventional Bottom Hole (Reset)

Tester: Robert Zodrow

Unit No: 57

**Interval: 3652.00 ft (KB) To 3720.00 ft (KB) (TVD)**

Reference Elevations: 2598.00 ft (KB)

Total Depth: 3618.00 ft (KB) (TVD)

2589.00 ft (CF)

Hole Diameter: 7.88 inches Hole Condition: Fair

KB to GR/CF: 9.00 ft

**Serial #: 8671**

**Inside**

Press@RunDepth: 18.44 psig @ 3653.00 ft (KB)

Capacity: 8000.00 psig

Start Date: 2014.02.23

End Date:

2014.02.23

Last Calib.:

2014.02.23

Start Time: 11:00:05

End Time:

16:51:29

Time On Btm:

2014.02.23 @ 12:49:00

Time Off Btm:

2014.02.23 @ 14:51:15

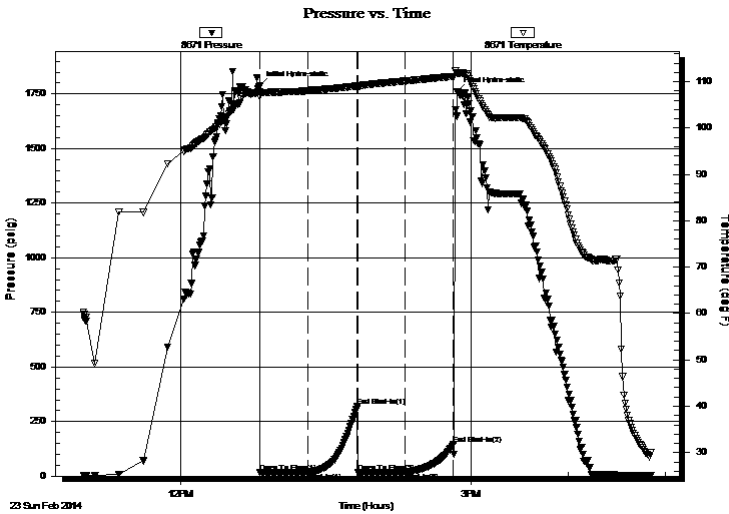
TEST COMMENT: 30-IF- Blow Built To 3/4"

30-IS- Surface Blow

30-FF- No blow

30-FS- No Return

## PRESSURE SUMMARY



Time (Min.)	Pressure (psig)	Temp (deg F)	Annotation
0	1785.89	107.97	Initial Hydro-static
1	16.69	106.74	Open To Flow (1)
30	17.14	108.04	Shut-In(1)
61	321.93	109.08	End Shut-In(1)
61	17.59	108.90	Open To Flow (2)
90	18.44	110.12	Shut-In(2)
120	146.47	111.14	End Shut-In(2)
123	1760.31	111.82	Final Hydro-static

## Recovery

Length (ft)	Description	Volume (bbl)
5.00	Mud w / oil spots 100%m	0.07

## Gas Rates

Choke (inches)	Pressure (psig)	Gas Rate (Mcf/d)

\* Recovery from multiple tests







**TRILOBITE  
TESTING, INC**

# DRILL STEM TEST REPORT

**TOOL DIAGRAM**

Blue Ridge Petroleum Corp.

**11 3s 29w Decatur KS**

PO Box 1913  
Enid OK 73702

**Smith #2-11**

Job Ticket: 56758

**DST#: 3**

ATTN: Clint Musgrove

Test Start: 2014.02.23 @ 11:00:00

## Tool Information

Drill Pipe:	Length: 3638.00 ft	Diameter: 3.88 inches	Volume: 53.20 bbl	Tool Weight: 2500.00 lb
Heavy Wt. Pipe:	Length: 0.00 ft	Diameter: 0.00 inches	Volume: 0.00 bbl	Weight set on Packer: 25000.00 lb
Drill Collar:	Length: 0.00 ft	Diameter: 2.25 inches	Volume: 0.00 bbl	Weight to Pull Loose: 46000.00 lb
			<u>Total Volume: 53.20 bbl</u>	Tool Chased ft
Drill Pipe Above KB:	6.00 ft			String Weight: Initial 44000.00 lb
Depth to Top Packer:	3652.00 ft			Final 44000.00 lb
Depth to Bottom Packer:	ft			
Interval between Packers:	68.00 ft			
Tool Length:	88.00 ft			
Number of Packers:	2	Diameter: 6.75 inches		
Tool Comments:				

## Tool Description

Tool Description	Length (ft)	Serial No.	Position	Depth (ft)	Accum. Lengths
Shut In Tool	5.00			3637.00	
Hydraulic tool	5.00			3642.00	
Packer	5.00			3647.00	20.00 Bottom Of Top Packer
Packer	5.00			3652.00	
Stubb	1.00			3653.00	
Recorder	0.00	8671	Inside	3653.00	
Recorder	0.00	8320	Outside	3653.00	
Perforations	31.00			3684.00	
Blank Spacing	33.00			3717.00	
Bullnose	3.00			3720.00	68.00 Bottom Packers & Anchor
<b>Total Tool Length:</b>	<b>88.00</b>				



**TRILOBITE  
TESTING, INC**

# DRILL STEM TEST REPORT

## FLUID SUMMARY

Blue Ridge Petroleum Corp.

**11 3s 29w Decatur KS**

PO Box 1913  
Enid OK 73702

**Smith #2-11**

Job Ticket: 56758

**DST#: 3**

ATTN: Clint Musgrove

Test Start: 2014.02.23 @ 11:00:00

### Mud and Cushion Information

Mud Type: Gel Chem

Cushion Type:

Oil API:

deg API

Mud Weight: 9.00 lb/gal

Cushion Length:

ft

Water Salinity:

ppm

Viscosity: 57.00 sec/qt

Cushion Volume:

bbbl

Water Loss: 5.39 in<sup>3</sup>

Gas Cushion Type:

Resistivity: ohm.m

Gas Cushion Pressure:

psig

Salinity: 1000.00 ppm

Filter Cake: 1.00 inches

### Recovery Information

Recovery Table

Length ft	Description	Volume bbl
5.00	Mud w / oil spots 100%m	0.073

Total Length: 5.00 ft      Total Volume: 0.073 bbl

Num Fluid Samples: 0

Num Gas Bombs: 0

Serial #:

Laboratory Name:

Laboratory Location:

Recovery Comments:

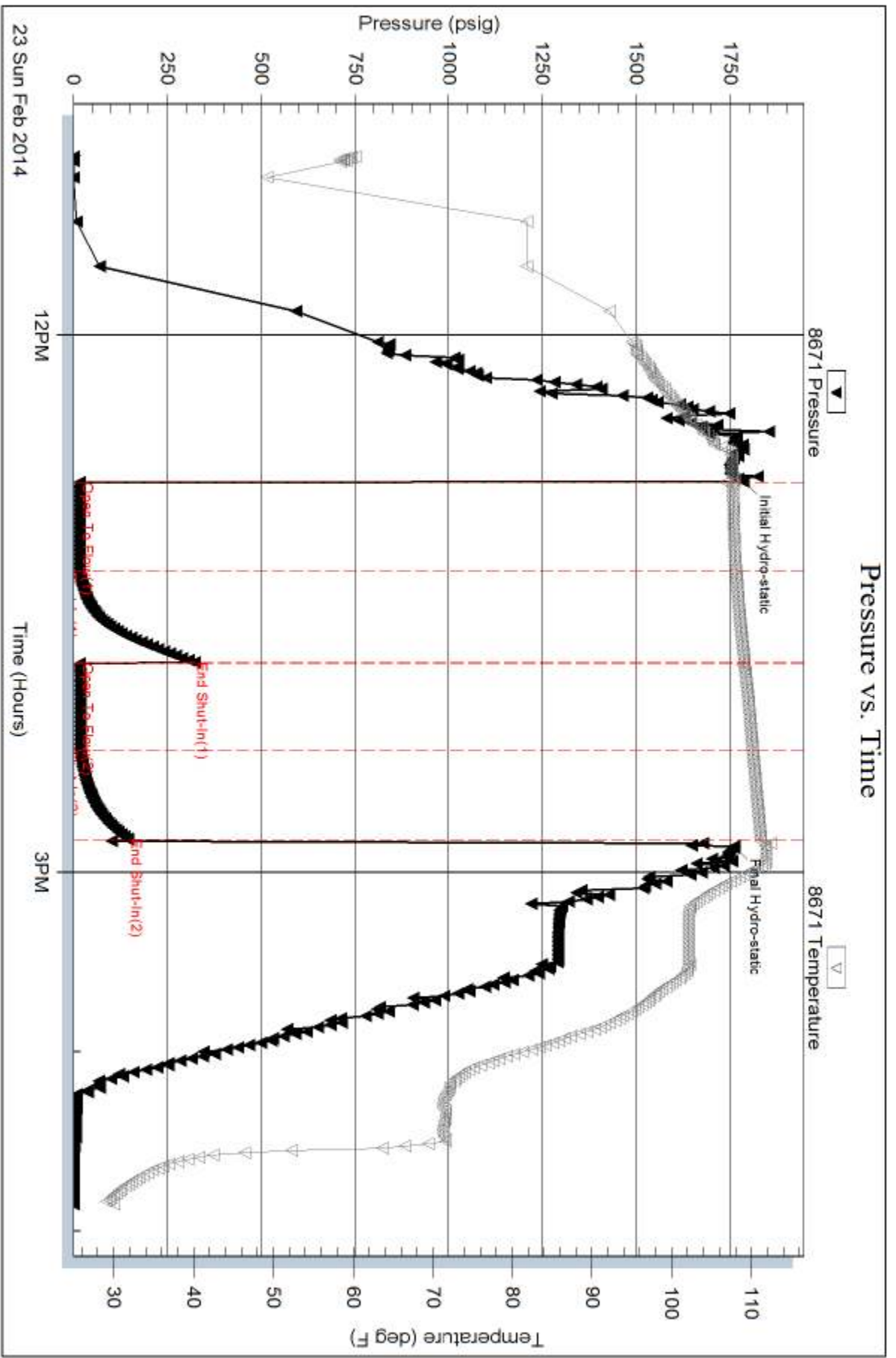
Serial #: 8671

Inside

Blue Ridge Petroleum Corp.

Smith #2-11

DST Test Number: 3



Trilobite Testing, Inc

Ref. No: 56758

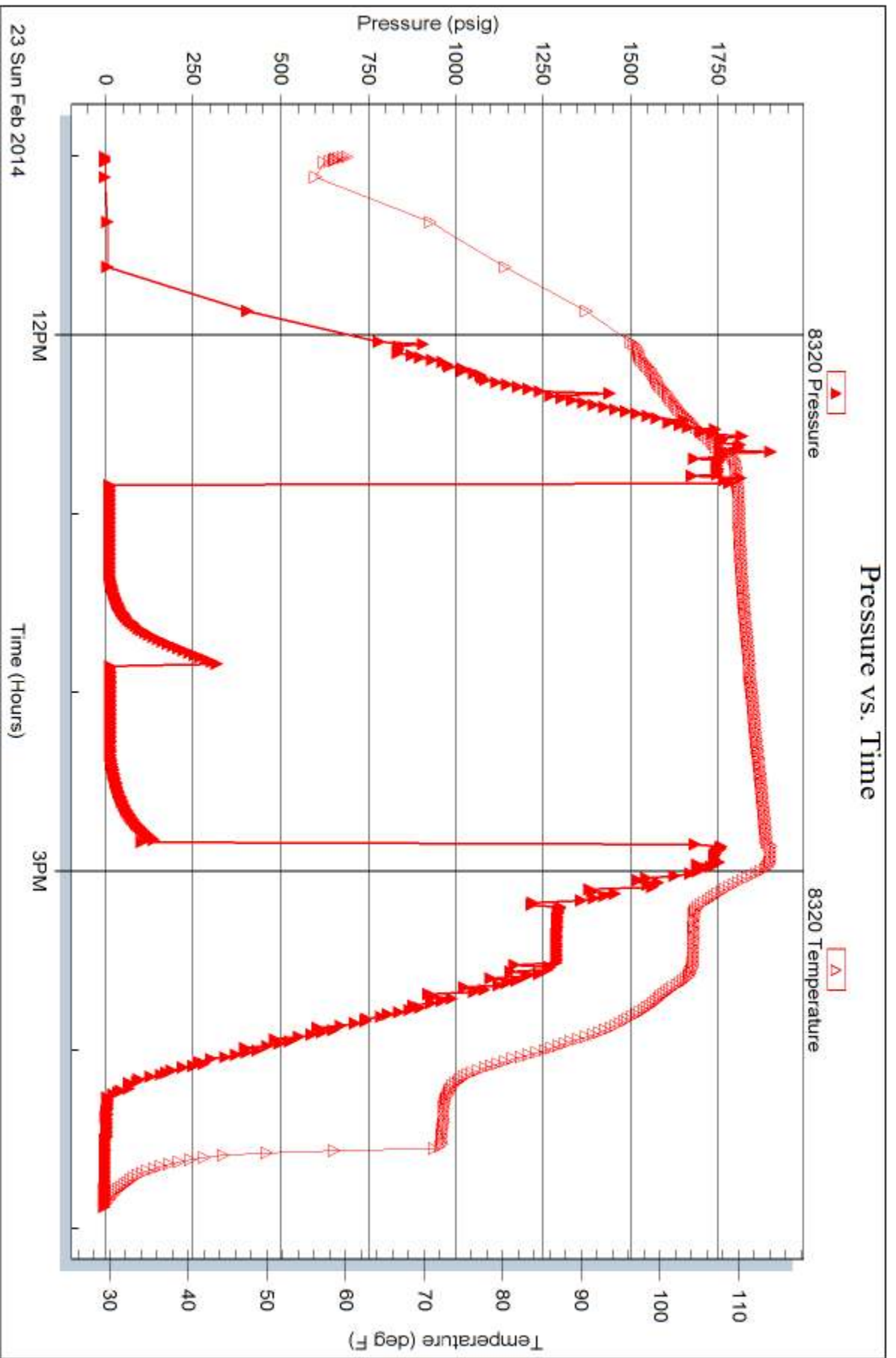
Printed: 2014.02.26 @ 14:30:51

Serial #: 8320

Outside Blue Ridge Petroleum Corp.

Smith #2-11

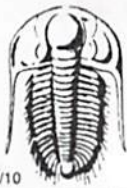
DST Test Number: 3



Trilobite Testing, Inc

Ref. No: 56758

Printed: 2014.02.26 @ 14:30:51



# TRILOBITE TESTING INC.

1515 Commerce Parkway • Hays, Kansas 67601

## Test Ticket

NO. 56756

Well Name & No. Smith #2-11 Test No. 1 Date 2-21-14  
 Company Blue Ridge Petroleum Corp. Elevation 2598 KB 2589 GL  
 Address PO Box 1913 ENID OK, 73702  
 Co. Rep / Geo. Clint Musgrove Rig Southwind #8  
 Location: Sec. 11 Twp. 3 S Rge. 29 W Co. Decatur State K.S.

Interval Tested 3592 - 3618 Zone Tested LKC "A"  
 Anchor Length 26 Drill Pipe Run 3576 Mud Wt. 8.9  
 Top Packer Depth 3588 Drill Collars Run 0 Vis 57  
 Bottom Packer Depth 3592 Wt. Pipe Run 0 WL 5.6  
 Total Depth 3618 Chlorides 1100 ppm System LCM 1  
 Blow Description IF - BOB 7 1/2 min  
ESI - no return  
FF - 3/4" blow died back to 1/2"  
FSI - no return

Rec	Feet of	%gas	%oil	%water	%mud
<u>2</u>	<u>clean oil</u>	<u>1</u>	<u>99</u>		
<u>8</u>	<u>MCO</u>		<u>55</u>	<u>45</u>	
<u>63</u>	<u>slightly gas MCW</u>	<u>5</u>		<u>55</u>	<u>40</u>
<u>504</u>	<u>MCW</u>		<u>90</u>	<u>10</u>	
<u>500</u>					

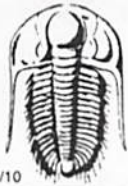
Rec Total 577 BHT 126 Gravity 26 API RW .4 @ 59 °F Chlorides 14,000 ppm

(A) Initial Hydrostatic 1767  Test 1150 T-On Location 9:00 PM 2-21  
 (B) First Initial Flow 49  Jars \_\_\_\_\_ T-Started 12:08 AM  
 (C) First Final Flow 166  Safety Joint \_\_\_\_\_ T-Open 2:46 AM  
 (D) Initial Shut-In 1269  Circ Sub \_\_\_\_\_ T-Pulled 5:52 AM  
 (E) Second Initial Flow 150  Hourly Standby \_\_\_\_\_ T-Out 8:15 AM 2-22  
 (F) Second Final Flow 290  Mileage 5 RT 7.75 Comments \_\_\_\_\_  
 (G) Final Shut-In 1265  Sampler \_\_\_\_\_  
 (H) Final Hydrostatic 1711  Straddle \_\_\_\_\_  Ruined Shale Packer \_\_\_\_\_  
 Shale Packer \_\_\_\_\_  Ruined Packer \_\_\_\_\_  
 Extra Packer \_\_\_\_\_  Extra Copies \_\_\_\_\_  
 Extra Recorder \_\_\_\_\_ Sub Total 0  
 Day Standby \_\_\_\_\_ Total 1157.75  
 Accessibility \_\_\_\_\_ MP/DST Disc't \_\_\_\_\_  
 Sub Total 1157.75

Approved By \_\_\_\_\_ Our Representative Robert Zedler

Trilobite Testing Inc. shall not be liable for damaged of any kind of the property or personnel of the one for whom a test is made, or for any loss suffered or sustained, directly or indirectly, through the use of its equipment, or its statements or opinion concerning the results of any test, tools lost or damaged in the hole shall be paid for at cost by the party for whom the test is made.





# TRILOBITE TESTING INC.

1515 Commerce Parkway • Hays, Kansas 67601

## Test Ticket

NO. 56757

Well Name & No. Smith #2-11 Test No. 2 Date 2-22-14  
 Company Blue Ridge Petroleum Corp. Elevation 2598 KB 2589 GL  
 Address PO Box 1913 Enid OK, 73702  
 Co. Rep / Geo. Clint Musgrove Rig Southwind #8  
 Location: Sec. 11 Twp. 35 Rge. 29W Co. Decatur State K.S.

Interval Tested 3623 - 3640 Zone Tested LKC "B+C"  
 Anchor Length 17 Drill Pipe Run 3607 Mud Wt. 9.0  
 Top Packer Depth 3619 Drill Collars Run 0 Vis 57  
 Bottom Packer Depth 3623 Wt. Pipe Run 0 WL 5.4  
 Total Depth 3640 Chlorides 1,000 ppm System LCM 1  
 Blow Description IF - straight to BOB  
ISI - BOB in 20 mins.  
FF - BOB in 1 min 30 sec.  
FSI - BOB in 14 mins.

Rec	Feet of	%gas	%oil	%water	%mud
<u>2046</u>	<u>90</u>	<u>15</u>	<u>85</u>		
<u><del>2046</del> 1380</u>	<u>2 IP</u>				
Rec	Feet of	%gas	%oil	%water	%mud
Rec	Feet of	%gas	%oil	%water	%mud
Rec	Feet of	%gas	%oil	%water	%mud

Rec Total 2046 BHT 129 Gravity 35 API RW @ \_\_\_\_\_ °F Chlorides \_\_\_\_\_ ppm  
 (A) Initial Hydrostatic 1772  Test 1150 T-On Location 3:00 PM 2-22  
 (B) First Initial Flow 175  Jars \_\_\_\_\_ T-Started 3:28 PM  
 (C) First Final Flow 512  Safety Joint \_\_\_\_\_ T-Open 5:23 PM  
 (D) Initial Shut-In 965  Circ Sub \_\_\_\_\_ T-Pulled 7:39 PM  
 (E) Second Initial Flow 534  Hourly Standby \_\_\_\_\_ T-Out 11:50 PM 2-22  
 (F) Second Final Flow 732  Mileage 5 RT 7.75 Comments \_\_\_\_\_  
 (G) Final Shut-In 977  Sampler \_\_\_\_\_  
 (H) Final Hydrostatic 1740  Straddle \_\_\_\_\_  Ruined Shale Packer \_\_\_\_\_  
 Shale Packer \_\_\_\_\_  Ruined Packer \_\_\_\_\_  
 Extra Packer \_\_\_\_\_  Extra Copies \_\_\_\_\_  
 Extra Recorder \_\_\_\_\_  
 Day Standby \_\_\_\_\_  
 Accessibility \_\_\_\_\_

Initial Open 30  
 Initial Shut-In 30  
 Final Flow 30  
 Final Shut-In 45  
 Sub Total 1157.75  
 Total 1157.75  
 MP/DST Disc't \_\_\_\_\_

Approved By \_\_\_\_\_ Our Representative Robert Zocher

Trilobite Testing Inc. shall not be liable for damaged of any kind of the property or personnel of the one for whom a test is made, or for any loss suffered or sustained, directly or indirectly, through the use of its equipment, or its statements or opinion concerning the results of any test, tools lost or damaged in the hole shall be paid for at cost by the party for whom the test is made.



# TRILOBITE TESTING INC.

1515 Commerce Parkway • Hays, Kansas 67601

## Test Ticket

NO. 56758

Well Name & No. Smith #2-11 Test No. 3 Date 2-23-14  
 Company Blue Ridge Petroleum Corp. Elevation 2598 KB 2589 GL  
 Address PO Box 1913 ENID OK, 73702  
 Co. Rep / Geo. Clint Musgrove Rig Southwind #8  
 Location: Sec. 11 Twp. 3 S Rge. 29 W Co. Decatur State KS.

Interval Tested 3652-3720 Zone Tested LKC "D-J"  
 Anchor Length 68 Drill Pipe Run 3638 Mud Wt. 9.0  
 Top Packer Depth 3648 Drill Collars Run 0 Vis 57  
 Bottom Packer Depth 3652 Wt. Pipe Run 0 WL 5.4  
 Total Depth 3720 Chlorides 1,000 ppm System LCM 1  
 Blow Description IF - blow built to 3/4"  
ISI - surface blow  
FF - no blow  
FSI - no return

Rec	Feet of	%gas	%oil	%water	%mud
<u>5</u>	<u>miw / <del>spots</del> oil spots</u>	<u>spotted</u>		<u>100</u>	
Rec	Feet of	%gas	%oil	%water	%mud
Rec	Feet of	%gas	%oil	%water	%mud
Rec	Feet of	%gas	%oil	%water	%mud
Rec	Feet of	%gas	%oil	%water	%mud

Rec Total 5 BHT 111 Gravity \_\_\_\_\_ API RW \_\_\_\_\_ @ \_\_\_\_\_ °F Chlorides \_\_\_\_\_ ppm

(A) Initial Hydrostatic 1786  Test 1150 T-On Location 10:00 Am 2-23  
 (B) First Initial Flow 17  Jars \_\_\_\_\_ T-Started 11:00 AM  
 (C) First Final Flow 17  Safety Joint \_\_\_\_\_ T-Open 12:49 PM  
 (D) Initial Shut-In 322  Circ Sub \_\_\_\_\_ T-Pulled 2:49 PM  
 (E) Second Initial Flow 18  Hourly Standby \_\_\_\_\_ T-Out 4:45 PM 2-23  
 (F) Second Final Flow 18  Mileage 5 Rt 15.50 Comments \_\_\_\_\_  
 (G) Final Shut-In 146  Sampler \_\_\_\_\_ James loaded tools 2/24 9:00  
 (H) Final Hydrostatic 1760  Straddle \_\_\_\_\_  Ruined Shale Packer \_\_\_\_\_  
 Shale Packer \_\_\_\_\_  Ruined Packer \_\_\_\_\_  
 Extra Packer \_\_\_\_\_  Extra Copies \_\_\_\_\_  
 Initial Open 30  Extra Recorder \_\_\_\_\_ Sub Total 0  
 Initial Shut-In 30  Day Standby \_\_\_\_\_ Total 1165.50  
 Final Flow 30  Accessibility \_\_\_\_\_ MP/DST Disc't \_\_\_\_\_  
 Final Shut-In 30 Sub Total 1165.50

Approved By \_\_\_\_\_

Our Representative Robert Zedler

Trilobite Testing Inc. shall not be liable for damaged of any kind of the property or personnel of the one for whom a test is made, or for any loss suffered or sustained, directly or indirectly, through the use of its equipment, or its statements or opinion concerning the results of any test, tools lost or damaged in the hole shall be paid for at cost by the party for whom the test is made.