

REVISION: 03/25/2014

LOCATION: 07-T14S-R28W GOVE COUNTY, KANSAS

WELL No: #1-7

REV.

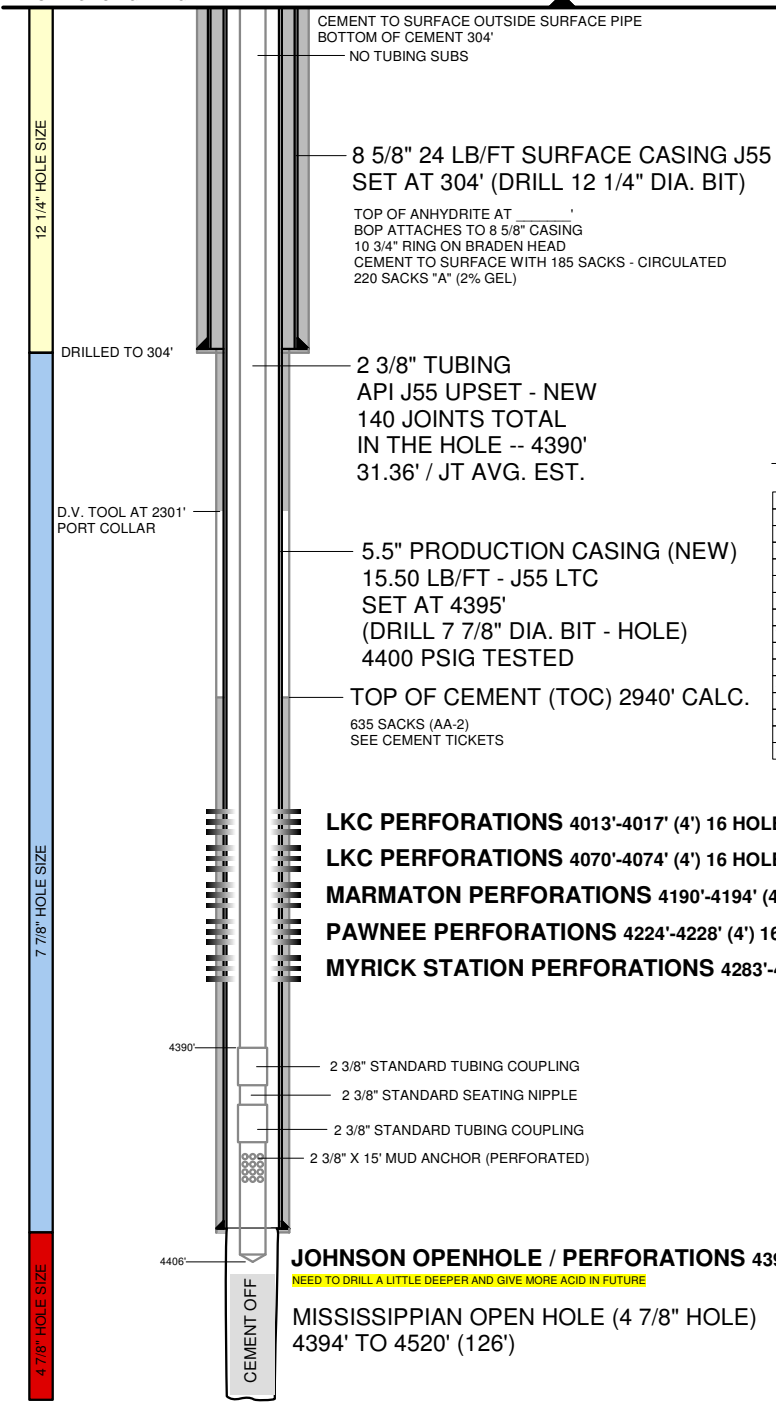
SURFACE TEMP: 60 DEG F

K.B.: 11'

G.L. ELEVATION 2666' (SHL)

SET TOP CLPG 12" AGL

5 1/2" X 2 3/8" TUBING HEAD



NOTES:

PUMPING UNIT: C - 114 - 140 - 54 (54" SURFACE STROKE)
 CONVENTIONAL LUFKIN UNIT
 20 HP ELECTRIC MOTOR WITH 40 HP SPOCC VFD
 VFD INSTALLED
 RUN TIME: 24 HRS PER DAY
 1.25" X 14' POLISHED ROD WITH LINER ASSEMBLY
 1.50" HARD FACED POLISHED ROD LINER X 8'
 NO PONY RODS ON TOP
 153 3/4" GRADE D SUCKER RODS ON TOP (NEW)
 20 7/8" GRADE D SUCKER RODS ON BOTTOM AS SINKER BARS (NEW)
 2' X 7/8" PONY ROD ON BOTTOM (ON TOP OF INSERT PUMP)
 SPEED RANGE: 4 TO 16 SPM
 MAX. SPEED: 16 SPM
 CURRENT SPEED: 8 SPM
 NO TUBING ANCHOR INSTALLED

TUBULARS

PURPOSE SIZE	CONDUCTOR 13 3/8"	SURFACE 8 5/8"	INTERMEDIATE	PRODUCTION 5 1/2"	PROD. TUBING 2 3/8"
WEIGHT	NONE	2,946 PSIG	NONE	15.5 LB/FT	4.6 LB/FT
GRADE	NONE	J-55	NONE	J-55	J-55
BURST	NONE	24.0 LB/FT	NONE	4,812 PSIG	5,600 PSIG
COLLAPSE	NONE	381,395 LBF	NONE	4,043 PSIG	5,888 PSIG
YIELD	NONE	1,434 PSIG	NONE	248,274 LBF	52,169 LBF
CAPACITY	NONE	0.064 BBL/FT	NONE	0.024 BBL/FT	0.004 BBL/FT
THICKNESS	NONE	0.2640"	NONE	0.2750"	0.1900"
ID	NONE	8.0970"	NONE	4.9500"	1.9950"
DRIFT ID	NONE	7.9720"	NONE	4.8250"	1.901"
AREA	NONE	51.49 IN2	NONE	19.42 IN2	1.304 IN2
SETTING DEPTH	NONE	304'	NONE	4,395'	4,390'
LENGTH	NONE	304'	NONE	4,395'	NEED 4,520'
FOB					CHASE, KS
COST					

- LKC PERFORATIONS 4013'-4017' (4') 16 HOLES → 100% OIL (322 BOPD GROSS)
- LKC PERFORATIONS 4070'-4074' (4') 16 HOLES → SHOW OF OIL AND WATER
- MARMATON PERFORATIONS 4190'-4194' (4') 16 HOLES → SHOW OF OIL AND WATER
- PAWNEE PERFORATIONS 4224'-4228' (4') 16 HOLES → SHOW OF OIL AND WATER
- MYRICK STATION PERFORATIONS 4283'-4286' (3') 12 HOLES → 24% OIL (96 BPD TOTAL FLUID)

DATE	03/24/2014
APPROVED BY	B. KELSO
AFE	
API No.	15063219770001
GL ELEVATION	2766'
KB	11'
KB ELEVATION	2767'
RIG	WORX

JOHNSON OPENHOLE / PERFORATIONS 4394'-4406' (12') → 1% OIL (80 TO 140 BPD TOTAL FLUID -- DRYING UP THOUGH)
 NEED TO DRILL A LITTLE DEEPER AND GIVE MORE ACID IN FUTURE

MISSISSIPPIAN OPEN HOLE (4 7/8" HOLE)
 4394' TO 4520' (126')

PBTD: 4520' TVD
 RTD: 4520' TVD
 LTD: 4520' TVD

DOWNHOLE TEMP: 130 DEG F (EST.)

DOWN HOLE SUCKER ROD PUMP:

1.5000" INSERT PUMP
 PUMP LENGTH: 14' (NICARD AND SS)
 BOTTOM HOLD DOWN TYPE
 TRAVELING BARREL
 2' X 3/4" PONY ROD ON TOP OF PUMP
 8' GAS SEPERATOR ON THE BOTTOM
 PUMP INTAKE DEPTH: 4404'
 PUMP IS SETTING BELOW PERFORATIONS

HBFB #1-7

GOVE COUNTY, KANSAS
 07-T14S-R28W
 SHL: 660 FSL, 660 FWL
 BHL: 660 FSL, 660 FWL
 MABEL L FIELD

