



DRILL STEM TEST REPORT

Prepared For: **Eagle Creek Corporation**

8100 East 22nd. St. North
Building 1500 Suite A
Wichita KS 67226

ATTN: Dave Callawaert

Decker #1-20

20-17s-34w Scott,KS

Start Date: 2014.01.21 @ 17:56:15

End Date: 2014.01.22 @ 01:06:00

Job Ticket #: 56736 DST #: 1

Trilobite Testing, Inc
PO Box 362 Hays, KS 67601
ph: 785-625-4778 fax: 785-625-5620

Printed: 2014.01.27 @ 14:59:15



**TRILOBITE
TESTING, INC**

DRILL STEM TEST REPORT

Eagle Creek Corporation

20-17s-34w Scott,KS

8100 East 22nd.St. North
Building 1500 Suite A
Wichita KS 67226
ATTN: Dave Callaw aert

Decker #1-20

Job Ticket: 56736

DST#: 1

Test Start: 2014.01.21 @ 17:56:15

GENERAL INFORMATION:

Formation: **LKC "I"**

Deviated: No Whipstock: ft (KB)

Time Tool Opened: 20:53:30

Time Test Ended: 01:06:00

Test Type: Conventional Bottom Hole (Initial)

Tester: Mike Roberts

Unit No: 65

Interval: 4226.00 ft (KB) To 4260.00 ft (KB) (TVD)

Reference Elevations: 3078.00 ft (KB)

Total Depth: 4260.00 ft (KB) (TVD)

3069.00 ft (CF)

Hole Diameter: 7.88 inches Hole Condition: Fair

KB to GR/CF: 9.00 ft

Serial #: 8846 Outside

Press@RunDepth: 25.64 psig @ 4227.00 ft (KB)

Capacity: 8000.00 psig

Start Date: 2014.01.21

End Date:

2014.01.22

Last Calib.:

2014.01.22

Start Time: 17:56:15

End Time:

01:06:00

Time On Btm:

2014.01.21 @ 20:53:15

Time Off Btm:

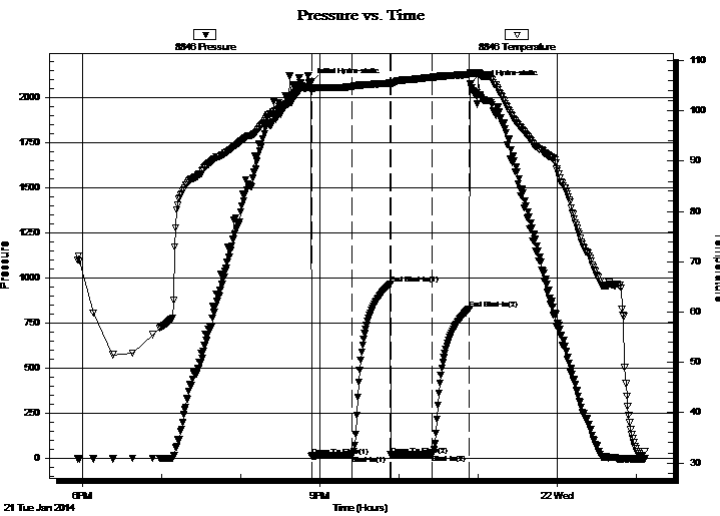
2014.01.21 @ 22:54:00

TEST COMMENT: IF:Built to weak surface blow and died in 17min.

IS:No return blow

FF:No blow

FS:No return blow



PRESSURE SUMMARY

Time (Min.)	Pressure (psig)	Temp (deg F)	Annotation
0	2086.02	104.51	Initial Hydro-static
1	14.85	104.01	Open To Flow (1)
31	20.15	104.87	Shut-In(1)
60	966.54	105.52	End Shut-In(1)
61	21.70	104.96	Open To Flow (2)
92	25.64	106.67	Shut-In(2)
120	830.81	107.22	End Shut-In(2)
121	2075.07	107.65	Final Hydro-static

Recovery

Length (ft)	Description	Volume (bbl)
5.00	mud with oil spots 100% m	0.02

Gas Rates

	Choke (inches)	Pressure (psig)	Gas Rate (Mcf/d)



**TRILOBITE
TESTING, INC**

DRILL STEM TEST REPORT

Eagle Creek Corporation

20-17s-34w Scott,KS

8100 East 22nd.St. North
Building 1500 Suite A
Wichita KS 67226
ATTN: Dave Callaw aert

Decker #1-20

Job Ticket: 56736

DST#: 1

Test Start: 2014.01.21 @ 17:56:15

GENERAL INFORMATION:

Formation: **LKC "I"**

Deviated: No Whipstock: ft (KB)

Time Tool Opened: 20:53:30

Time Test Ended: 01:06:00

Test Type: Conventional Bottom Hole (Initial)

Tester: Mike Roberts

Unit No: 65

Interval: 4226.00 ft (KB) To 4260.00 ft (KB) (TVD)

Reference Elevations: 3078.00 ft (KB)

Total Depth: 4260.00 ft (KB) (TVD)

3069.00 ft (CF)

Hole Diameter: 7.88 inches Hole Condition: Fair

KB to GR/CF: 9.00 ft

Serial #: 8737 Inside

Press@RunDepth: psig @ 4227.00 ft (KB)

Capacity: 8000.00 psig

Start Date: 2014.01.21

End Date:

2014.01.22

Last Calib.:

2014.01.22

Start Time: 17:56:15

End Time:

01:06:00

Time On Btm:

Time Off Btm:

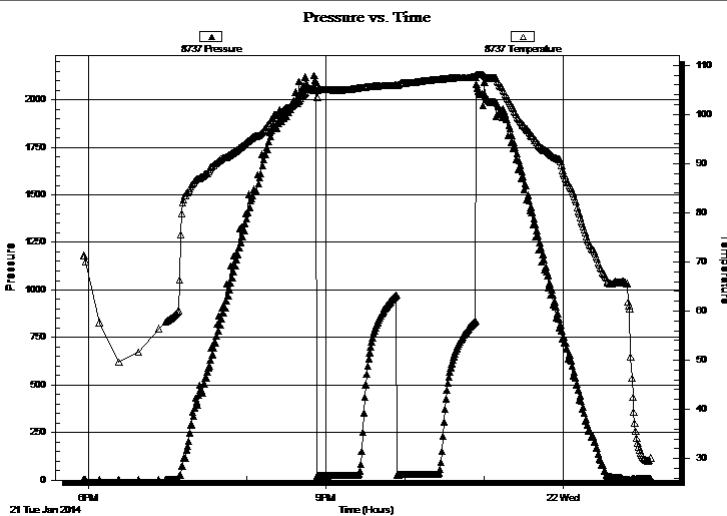
TEST COMMENT: IF: Built to weak surface blow and died in 17min.

IS: No return blow

FF: No blow

FS: No return blow

PRESSURE SUMMARY



Time (Min.)	Pressure (psig)	Temp (deg F)	Annotation

Recovery

Length (ft)	Description	Volume (bbl)
5.00	mud w ith oil spots 100% m	0.02

Gas Rates

Choke (inches)	Pressure (psig)	Gas Rate (Mcf/d)



**TRILOBITE
TESTING, INC**

DRILL STEM TEST REPORT

TOOL DIAGRAM

Eagle Creek Corporation

20-17s-34w Scott,KS

8100 East 22nd.St. North
Building 1500 Suite A
Wichita KS 67226
ATTN: Dave Callaw aert

Decker #1-20

Job Ticket: 56736

DST#: 1

Test Start: 2014.01.21 @ 17:56:15

Tool Information

Drill Pipe:	Length: 4186.00 ft	Diameter: 3.80 inches	Volume: 58.72 bbl	Tool Weight:	1500.00 lb
Heavy Wt. Pipe:	Length: 0.00 ft	Diameter: 0.00 inches	Volume: 0.00 bbl	Weight set on Packer:	20000.00 lb
Drill Collar:	Length: 30.00 ft	Diameter: 2.25 inches	Volume: 0.15 bbl	Weight to Pull Loose:	80000.00 lb
			<u>Total Volume: 58.87 bbl</u>	Tool Chased	0.00 ft
Drill Pipe Above KB:	18.00 ft			String Weight: Initial	60000.00 lb
Depth to Top Packer:	4226.00 ft			Final	60000.00 lb
Depth to Bottom Packer:	ft				
Interval between Packers:	34.00 ft				
Tool Length:	62.00 ft				
Number of Packers:	2	Diameter: 6.75 inches			

Tool Comments:

Tool Description

Tool Description	Length (ft)	Serial No.	Position	Depth (ft)	Accum. Lengths
Change Over Sub	1.00			4199.00	
Shut In Tool	5.00			4204.00	
Hydraulic tool	5.00			4209.00	
Jars	5.00			4214.00	
Safety Joint	3.00			4217.00	
Packer	5.00			4222.00	28.00 Bottom Of Top Packer
Packer	4.00			4226.00	
Stubb	1.00			4227.00	
Recorder	0.00	8737	Inside	4227.00	
Recorder	0.00	8846	Outside	4227.00	
Perforations	28.00			4255.00	
Bullnose	5.00			4260.00	34.00 Bottom Packers & Anchor

Total Tool Length: 62.00



**TRILOBITE
TESTING, INC**

DRILL STEM TEST REPORT

FLUID SUMMARY

Eagle Creek Corporation

20-17s-34w Scott,KS

8100 East 22nd.St. North
Building 1500 Suite A
Wichita KS 67226
ATTN: Dave Callaw aert

Decker #1-20

Job Ticket: 56736

DST#: 1

Test Start: 2014.01.21 @ 17:56:15

Mud and Cushion Information

Mud Type: Gel Chem

Cushion Type:

Oil API:

0 deg API

Mud Weight: 9.00 lb/gal

Cushion Length:

ft

Water Salinity:

0 ppm

Viscosity: 4.00 sec/qt

Cushion Volume:

bbbl

Water Loss: 53.60 in³

Gas Cushion Type:

Resistivity: 8.00 ohm.m

Gas Cushion Pressure:

psig

Salinity: 4500.00 ppm

Filter Cake: 1.00 inches

Recovery Information

Recovery Table

Length ft	Description	Volume bbl
5.00	mud w ith oil spots 100% m	0.025

Total Length: 5.00 ft Total Volume: 0.025 bbl

Num Fluid Samples: 0

Num Gas Bombs: 0

Serial #:

Laboratory Name:

Laboratory Location:

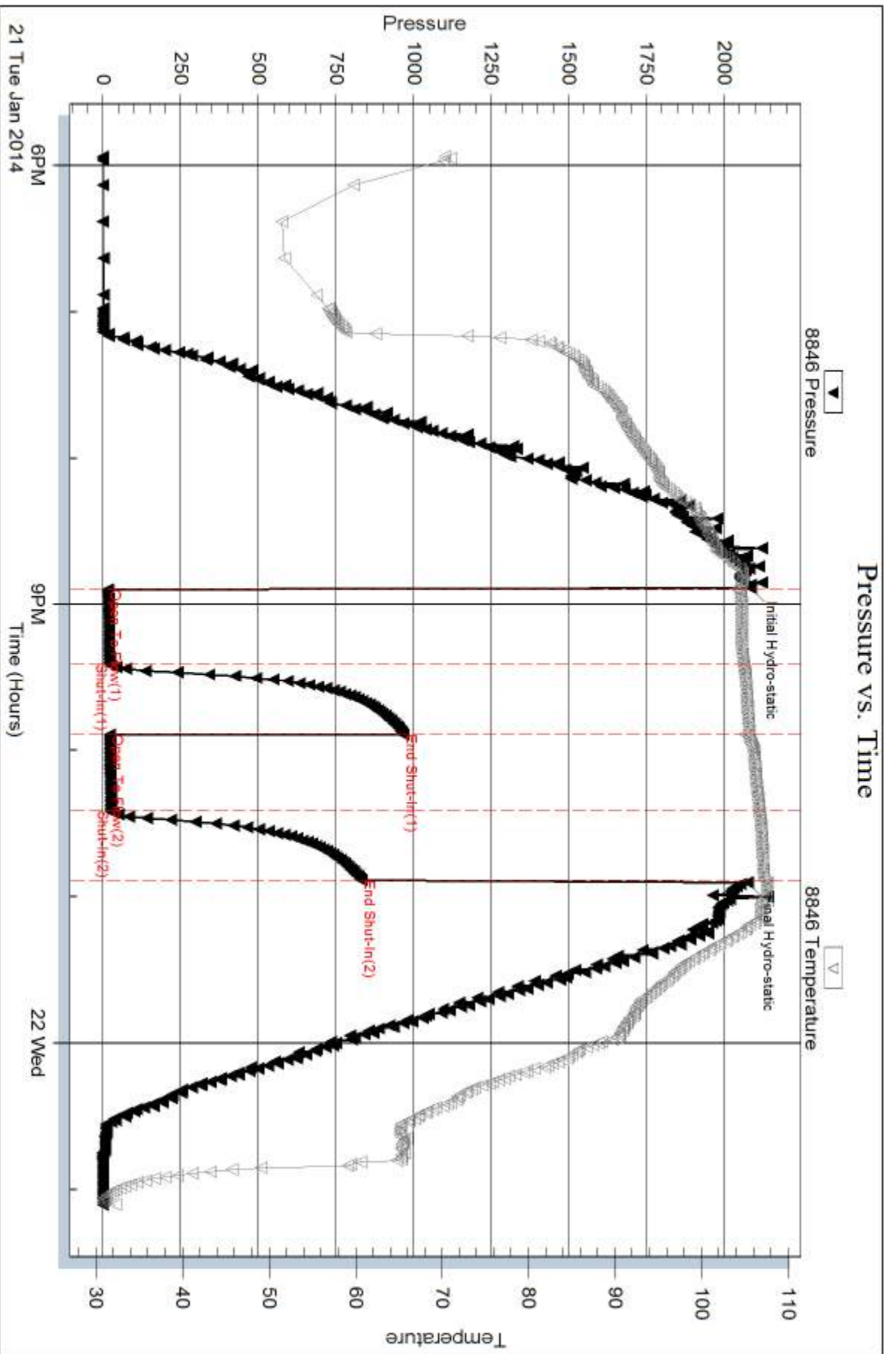
Recovery Comments:

Serial #: 8846

Outside Eagle Creek Corporation

Decker #1-20

DST Test Number: 1



Tribble Testing, Inc

Ref. No: 56736

Printed: 2014.01.27 @ 14:59:17

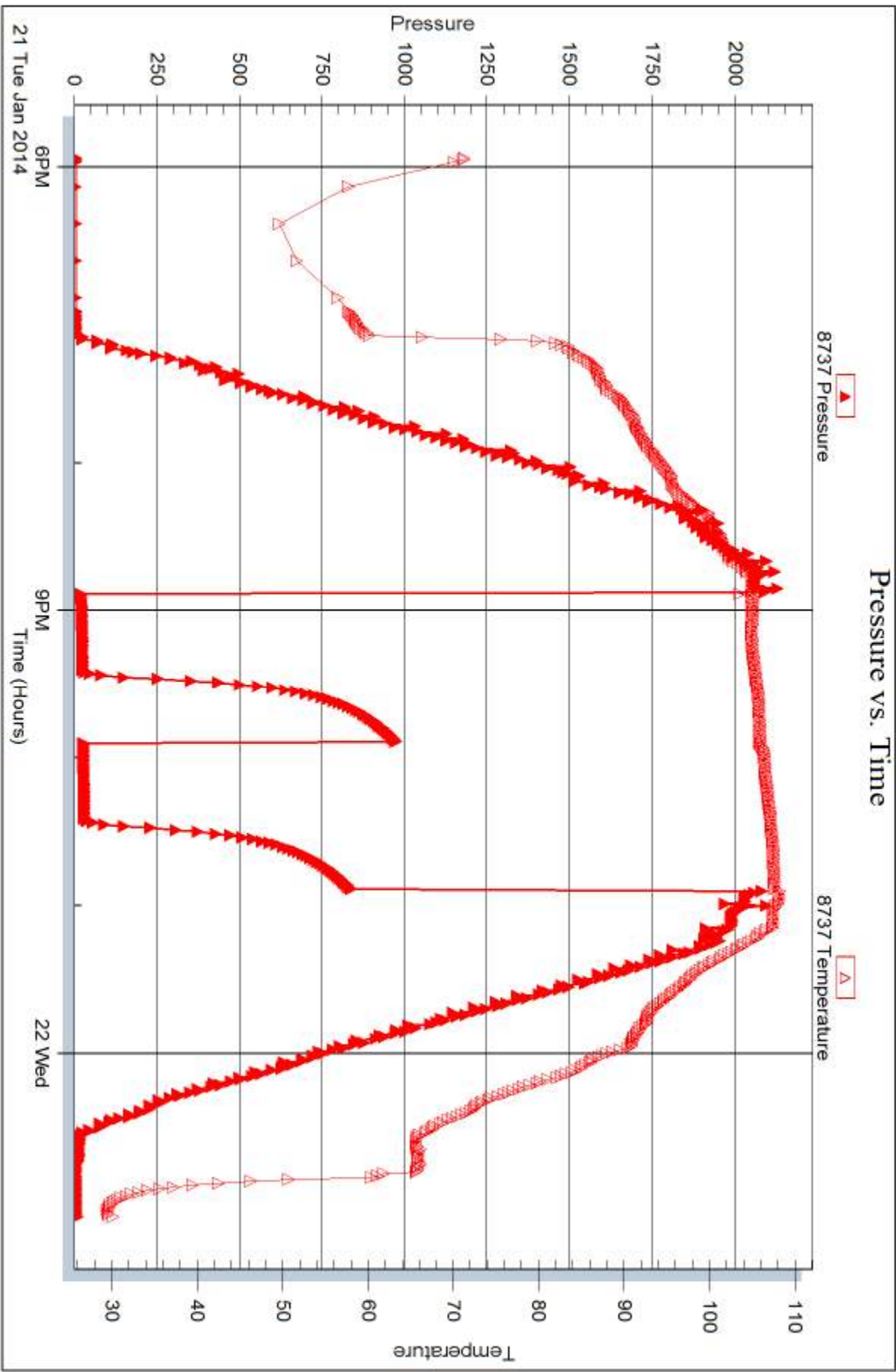
Serial #: 8737

Inside

Eagle Creek Corporation

Decker #1-20

DST Test Number: 1



Triobite Testing, Inc

Ref. No: 56736

Printed: 2014.01.27 @ 14:59:17



DRILL STEM TEST REPORT

Prepared For: **Eagle Creek Corporation**

8100 East 22nd. St. North
Building 1500 Suite A
Wichita KS 67226

ATTN: Dave Callawaert

Decker #1-20

20-17s-34w Scott,KS

Start Date: 2014.01.22 @ 23:42:15

End Date: 2014.01.23 @ 06:53:30

Job Ticket #: 56737 DST #: 2

Trilobite Testing, Inc
PO Box 362 Hays, KS 67601
ph: 785-625-4778 fax: 785-625-5620

Printed: 2014.01.27 @ 14:58:45



TRILOBITE TESTING, INC

DRILL STEM TEST REPORT

Eagle Creek Corporation
 8100 East 22nd. St. North
 Building 1500 Suite A
 Wichita KS 67226
 ATTN: Dave Callaw aert

20-17s-34w Scott,KS

Decker #1-20

Job Ticket: 56737

DST#: 2

Test Start: 2014.01.22 @ 23:42:15

GENERAL INFORMATION:

Formation: **Marmaton**

Deviated: No Whipstock: ft (KB)

Time Tool Opened: 01:54:00

Time Test Ended: 06:53:30

Test Type: Conventional Bottom Hole (Reset)

Tester: Mike Roberts

Unit No: 65

Interval: 4378.00 ft (KB) To 4460.00 ft (KB) (TVD)

Reference Elevations: 3078.00 ft (KB)

Total Depth: 4460.00 ft (KB) (TVD)

3069.00 ft (CF)

Hole Diameter: 7.88 inches Hole Condition: Fair

KB to GR/CF: 9.00 ft

Serial #: 8846

Inside

Press@RunDepth: 87.90 psig @ 4379.00 ft (KB)

Capacity: 8000.00 psig

Start Date: 2014.01.22

End Date:

2014.01.23

Last Calib.:

2014.01.23

Start Time: 23:42:15

End Time:

06:53:30

Time On Btm:

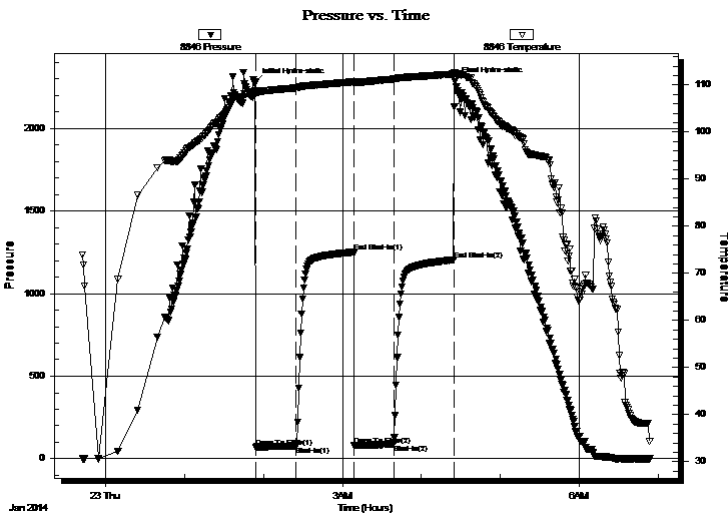
2014.01.23 @ 01:53:30

Time Off Btm:

2014.01.23 @ 04:25:45

TEST COMMENT: IF: Built to 1/8" blow
 IS: No return blow
 FF: No blow
 FS: No return blow

PRESSURE SUMMARY



Time (Min.)	Pressure (psig)	Temp (deg F)	Annotation
0	2274.24	108.70	Initial Hydro-static
1	71.25	108.28	Open To Flow (1)
32	78.44	109.39	Shut-In(1)
75	1251.13	110.70	End Shut-In(1)
76	80.66	110.33	Open To Flow (2)
106	87.90	111.23	Shut-In(2)
151	1204.04	112.31	End Shut-In(2)
153	2282.89	112.53	Final Hydro-static

Recovery

Length (ft)	Description	Volume (bbl)
70.00	mud w ith oil spots	0.71

Gas Rates

	Choke (inches)	Pressure (psig)	Gas Rate (Mcf/d)

* Recovery from multiple tests



TRILOBITE TESTING, INC

DRILL STEM TEST REPORT

Eagle Creek Corporation
8100 East 22nd. St. North
Building 1500 Suite A
Wichita KS 67226
ATTN: Dave Callaw aert

20-17s-34w Scott, KS

Decker #1-20

Job Ticket: 56737

DST#: 2

Test Start: 2014.01.22 @ 23:42:15

GENERAL INFORMATION:

Formation: **Marmaton**

Deviated: No Whipstock: ft (KB)

Time Tool Opened: 01:54:00

Time Test Ended: 06:53:30

Test Type: Conventional Bottom Hole (Reset)

Tester: Mike Roberts

Unit No: 65

Interval: 4378.00 ft (KB) To 4460.00 ft (KB) (TVD)

Reference Elevations: 3078.00 ft (KB)

Total Depth: 4460.00 ft (KB) (TVD)

3069.00 ft (CF)

Hole Diameter: 7.88 inches Hole Condition: Fair

KB to GR/CF: 9.00 ft

Serial #: 8737 Outside

Press@RunDepth: psig @ 4379.00 ft (KB)

Capacity: 8000.00 psig

Start Date: 2014.01.22

End Date:

2014.01.23

Last Calib.:

2014.01.23

Start Time: 23:42:15

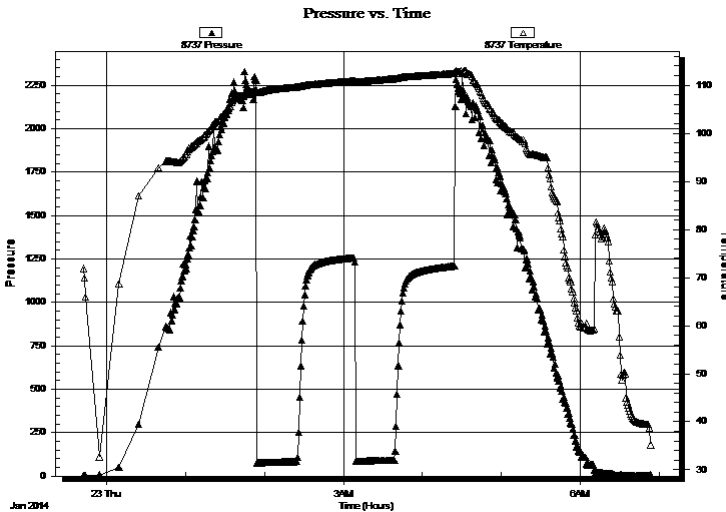
End Time:

06:53:30

Time On Btm:

Time Off Btm:

TEST COMMENT: IF:Built to 1/8" blow
IS:No return blow
FF:No blow
FS:No return blow



PRESSURE SUMMARY

Time (Min.)	Pressure (psig)	Temp (deg F)	Annotation

Recovery

Length (ft)	Description	Volume (bbl)
70.00	mud w ith oil spots	0.71

Gas Rates

	Choke (inches)	Pressure (psig)	Gas Rate (Mcf/d)

* Recovery from multiple tests



**TRILOBITE
TESTING, INC**

DRILL STEM TEST REPORT

TOOL DIAGRAM

Eagle Creek Corporation

20-17s-34w Scott,KS

8100 East 22nd.St. North
Building 1500 Suite A
Wichita KS 67226
ATTN: Dave Callaw aert

Decker #1-20

Job Ticket: 56737

DST#: 2

Test Start: 2014.01.22 @ 23:42:15

Tool Information

Drill Pipe:	Length: 4349.00 ft	Diameter: 3.80 inches	Volume: 61.01 bbl	Tool Weight:	1500.00 lb
Heavy Wt. Pipe:	Length: 0.00 ft	Diameter: 0.00 inches	Volume: 0.00 bbl	Weight set on Packer:	20000.00 lb
Drill Collar:	Length: 30.00 ft	Diameter: 2.25 inches	Volume: 0.15 bbl	Weight to Pull Loose:	80000.00 lb
			<u>Total Volume: 61.16 bbl</u>	Tool Chased	0.00 ft
Drill Pipe Above KB:	30.00 ft			String Weight: Initial	60000.00 lb
Depth to Top Packer:	4378.00 ft			Final	60000.00 lb
Depth to Bottom Packer:	ft				
Interval between Packers:	82.00 ft				
Tool Length:	111.00 ft				
Number of Packers:	2	Diameter: 6.75 inches			

Tool Comments:

Tool Description

Tool Description	Length (ft)	Serial No.	Position	Depth (ft)	Accum. Lengths
Change Over Sub	1.00			4350.00	
Shut In Tool	5.00			4355.00	
Hydraulic tool	5.00			4360.00	
Jars	5.00			4365.00	
Safety Joint	3.00			4368.00	
Packer	5.00			4373.00	29.00 Bottom Of Top Packer
Packer	5.00			4378.00	
Stubb	1.00			4379.00	
Recorder	0.00	8846	Inside	4379.00	
Recorder	0.00	8737	Outside	4379.00	
Perforations	1.00			4380.00	
Change Over Sub	1.00			4381.00	
Drill Pipe	63.00			4444.00	
Change Over Sub	1.00			4445.00	
Perforations	10.00			4455.00	
Bullnose	5.00			4460.00	82.00 Bottom Packers & Anchor
Total Tool Length:	111.00				



**TRILOBITE
TESTING, INC**

DRILL STEM TEST REPORT

FLUID SUMMARY

Eagle Creek Corporation

20-17s-34w Scott,KS

8100 East 22nd.St. North
Building 1500 Suite A
Wichita KS 67226
ATTN: Dave Callaw aert

Decker #1-20

Job Ticket: 56737

DST#: 2

Test Start: 2014.01.22 @ 23:42:15

Mud and Cushion Information

Mud Type: Gel Chem

Mud Weight: 9.00 lb/gal

Viscosity: 54.00 sec/qt

Water Loss: 7.96 in³

Resistivity: 8.00 ohm.m

Salinity: 7000.00 ppm

Filter Cake: 1.00 inches

Cushion Type:

Cushion Length: ft

Cushion Volume: bbl

Gas Cushion Type:

Gas Cushion Pressure: psig

Oil API:

0 deg API

Water Salinity: 0 ppm

Recovery Information

Recovery Table

Length ft	Description	Volume bbl
70.00	mud w ith oil spots	0.709

Total Length: 70.00 ft Total Volume: 0.709 bbl

Num Fluid Samples: 0

Num Gas Bombs: 0

Serial #:

Laboratory Name:

Laboratory Location:

Recovery Comments:

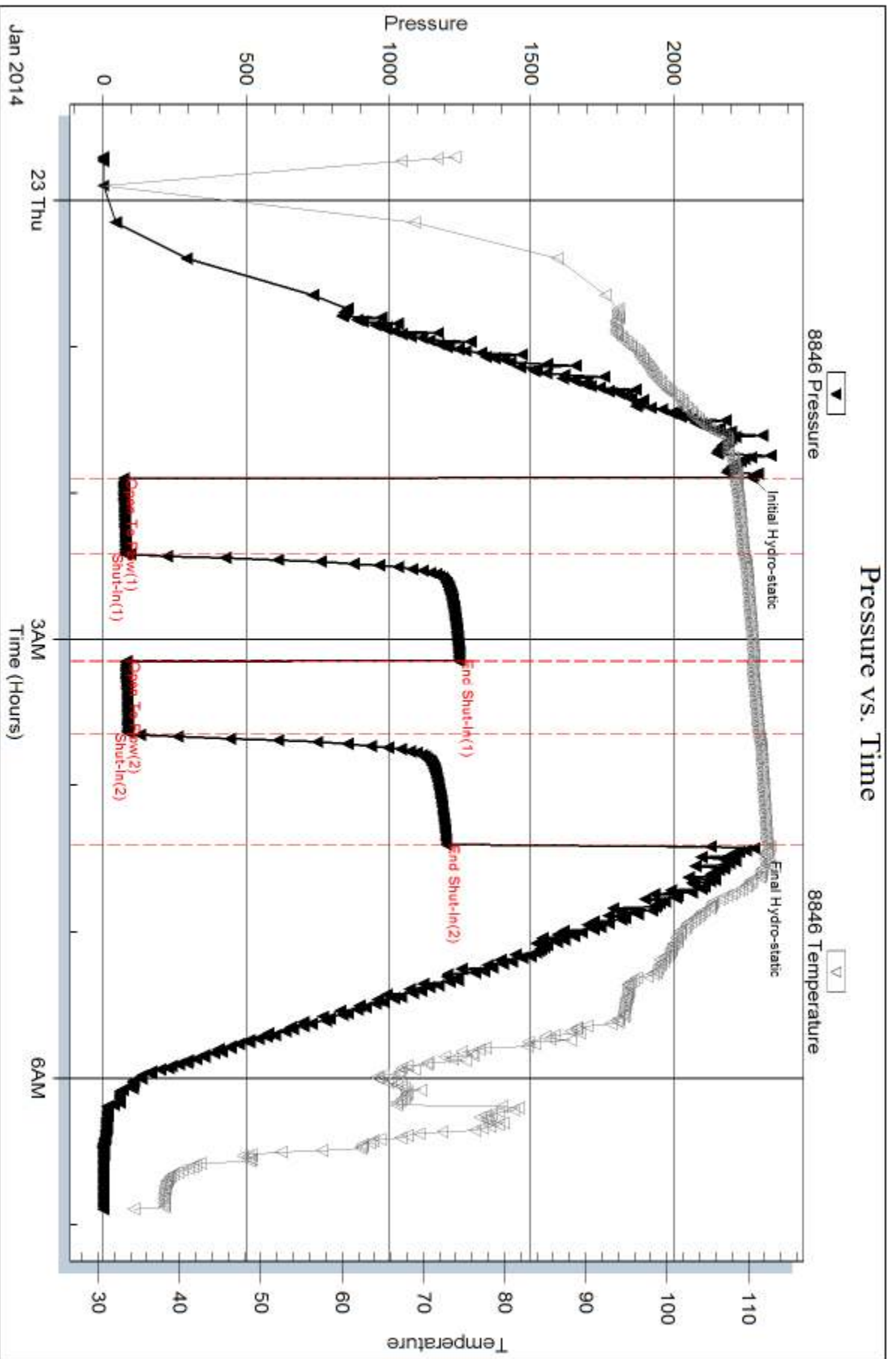
Serial #: 8846

Inside

Eagle Creek Corporation

Decker #1-20

DST Test Number: 2



Tribble Testing, Inc

Ref. No: 56737

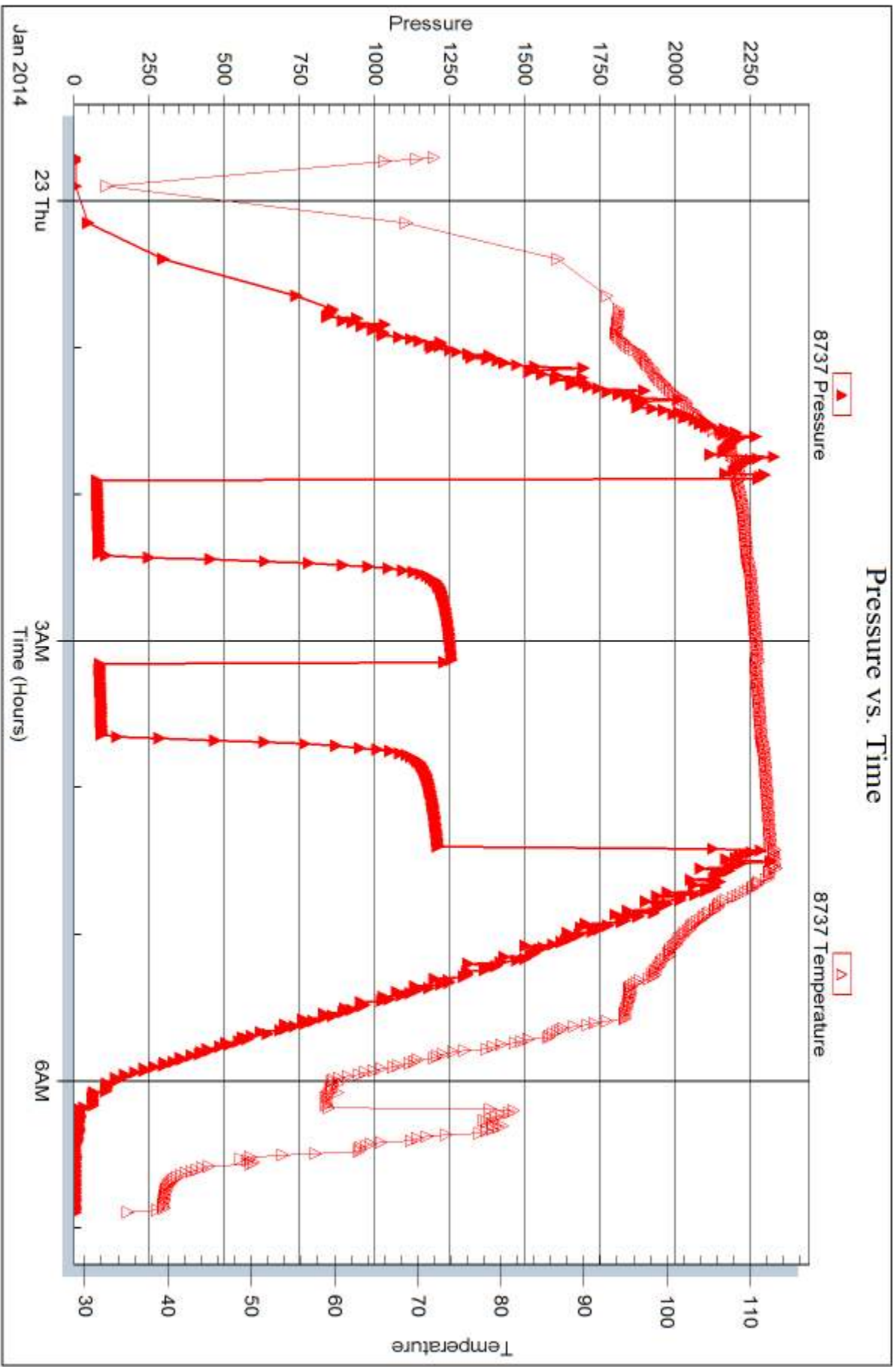
Printed: 2014.01.27 @ 14:58:47

Serial #: 8737

Outside Eagle Creek Corporation

Decker #1-20

DST Test Number: 2





DRILL STEM TEST REPORT

Prepared For: **Eagle Creek Corporation**

8100 East 22nd. St. North
Building 1500 Suite A
Wichita KS 67226

ATTN: Dave Callawaert

Decker #1-20

20-17s-34w Scott,KS

Start Date: 2014.01.23 @ 16:30:15

End Date: 2014.01.24 @ 02:22:30

Job Ticket #: 56738 DST #: 3

Trilobite Testing, Inc
PO Box 362 Hays, KS 67601
ph: 785-625-4778 fax: 785-625-5620

Printed: 2014.01.27 @ 14:58:17



TRILOBITE TESTING, INC

DRILL STEM TEST REPORT

Eagle Creek Corporation
 8100 East 22nd.St. North
 Building 1500 Suite A
 Wichita KS 67226
 ATTN: Dave Callaw aert

20-17s-34w Scott,KS

Decker #1-20

Job Ticket: 56738

DST#: 3

Test Start: 2014.01.23 @ 16:30:15

GENERAL INFORMATION:

Formation: **Marmaton**

Deviated: No Whipstock: ft (KB)

Time Tool Opened: 19:16:15

Time Test Ended: 02:22:30

Test Type: Conventional Bottom Hole (Reset)

Tester: Mike Roberts

Unit No: 65

Interval: 4456.00 ft (KB) To 4480.00 ft (KB) (TVD)

Total Depth: 4480.00 ft (KB) (TVD)

Hole Diameter: 7.88 inches Hole Condition: Fair

Reference Elevations: 3078.00 ft (KB)

3069.00 ft (CF)

KB to GR/CF: 9.00 ft

Serial #: 8846 Outside

Press@RunDepth: 159.33 psig @ 4457.00 ft (KB)

Start Date: 2014.01.23

End Date:

2014.01.24

Start Time: 16:30:15

End Time:

02:22:30

Capacity: 8000.00 psig

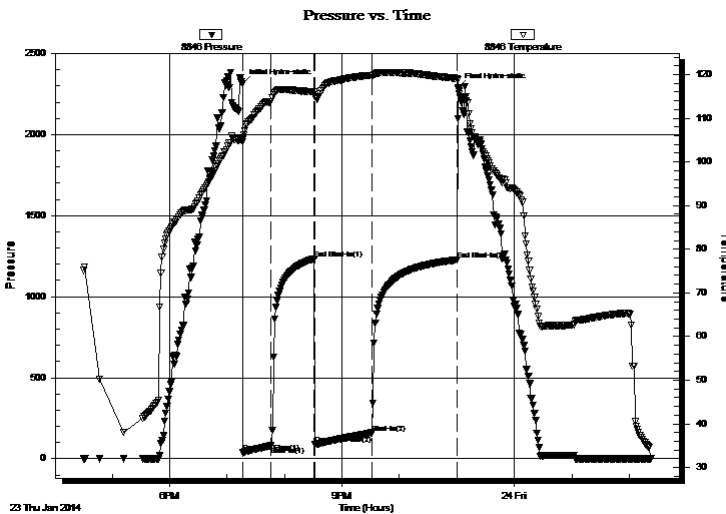
Last Calib.: 2014.01.24

Time On Btm: 2014.01.23 @ 19:16:00

Time Off Btm: 2014.01.23 @ 23:01:30

TEST COMMENT: IF:BOB in 11 min.
 IS: Return blow built to 5"
 FF:BOB in 15 min.
 FS:Return blow built to 9"

PRESSURE SUMMARY



Time (Min.)	Pressure (psig)	Temp (deg F)	Annotation
0	2313.87	105.17	Initial Hydro-static
1	36.95	104.69	Open To Flow (1)
30	79.72	113.74	Shut-In(1)
75	1234.32	116.01	End Shut-In(1)
76	88.78	114.99	Open To Flow (2)
135	159.33	119.74	Shut-In(2)
225	1227.02	119.11	End Shut-In(2)
226	2291.80	116.66	Final Hydro-static

Recovery

Length (ft)	Description	Volume (bbl)
0.00	GIP= 434 ft	0.00
124.00	gcom 10%g 20%o 70%m	1.47
248.00	gco 10%g 90%o	3.48

Gas Rates

	Choke (inches)	Pressure (psig)	Gas Rate (Mcf/d)

* Recovery from multiple tests



**TRILOBITE
TESTING, INC**

DRILL STEM TEST REPORT

TOOL DIAGRAM

Eagle Creek Corporation
8100 East 22nd.St. North
Building 1500 Suite A
Wichita KS 67226
ATTN: Dave Callaw aert

20-17s-34w Scott,KS
Decker #1-20
Job Ticket: 56738
Test Start: 2014.01.23 @ 16:30:15

DST#: 3

Tool Information

Drill Pipe:	Length: 4428.00 ft	Diameter: 3.80 inches	Volume: 62.11 bbl	Tool Weight:	1500.00 lb
Heavy Wt. Pipe:	Length: 0.00 ft	Diameter: 0.00 inches	Volume: 0.00 bbl	Weight set on Packer:	25000.00 lb
Drill Collar:	Length: 30.00 ft	Diameter: 2.25 inches	Volume: 0.15 bbl	Weight to Pull Loose:	80000.00 lb
			<u>Total Volume: 62.26 bbl</u>	Tool Chased	0.00 ft
Drill Pipe Above KB:	30.00 ft			String Weight: Initial	60000.00 lb
Depth to Top Packer:	4456.00 ft			Final	62000.00 lb
Depth to Bottom Packer:	ft				
Interval between Packers:	24.00 ft				
Tool Length:	52.00 ft				
Number of Packers:	2	Diameter: 6.75 inches			

Tool Comments:

Tool Description	Length (ft)	Serial No.	Position	Depth (ft)	Accum. Lengths
------------------	-------------	------------	----------	------------	----------------

Change Over Sub	1.00			4429.00	
Shut In Tool	5.00			4434.00	
Hydraulic tool	5.00			4439.00	
Jars	5.00			4444.00	
Safety Joint	3.00			4447.00	
Packer	5.00			4452.00	28.00 Bottom Of Top Packer
Packer	4.00			4456.00	
Stubb	1.00			4457.00	
Recorder	0.00	8737	Inside	4457.00	
Recorder	0.00	8846	Outside	4457.00	
Perforations	18.00			4475.00	
Bullnose	5.00			4480.00	24.00 Bottom Packers & Anchor

Total Tool Length: 52.00



**TRILOBITE
TESTING, INC**

DRILL STEM TEST REPORT

FLUID SUMMARY

Eagle Creek Corporation
8100 East 22nd. St. North
Building 1500 Suite A
Wichita KS 67226
ATTN: Dave Callaw aert

20-17s-34w Scott,KS
Decker #1-20
Job Ticket: 56738 **DST#: 3**
Test Start: 2014.01.23 @ 16:30:15

Mud and Cushion Information

Mud Type: Gel Chem	Cushion Type:	Oil API: 26 deg API
Mud Weight: 9.00 lb/gal	Cushion Length: ft	Water Salinity: 0 ppm
Viscosity: 54.00 sec/qt	Cushion Volume: bbl	
Water Loss: 7.97 in ³	Gas Cushion Type:	
Resistivity: 8.00 ohm.m	Gas Cushion Pressure: psig	
Salinity: 7000.00 ppm		
Filter Cake: 1.00 inches		

Recovery Information

Recovery Table

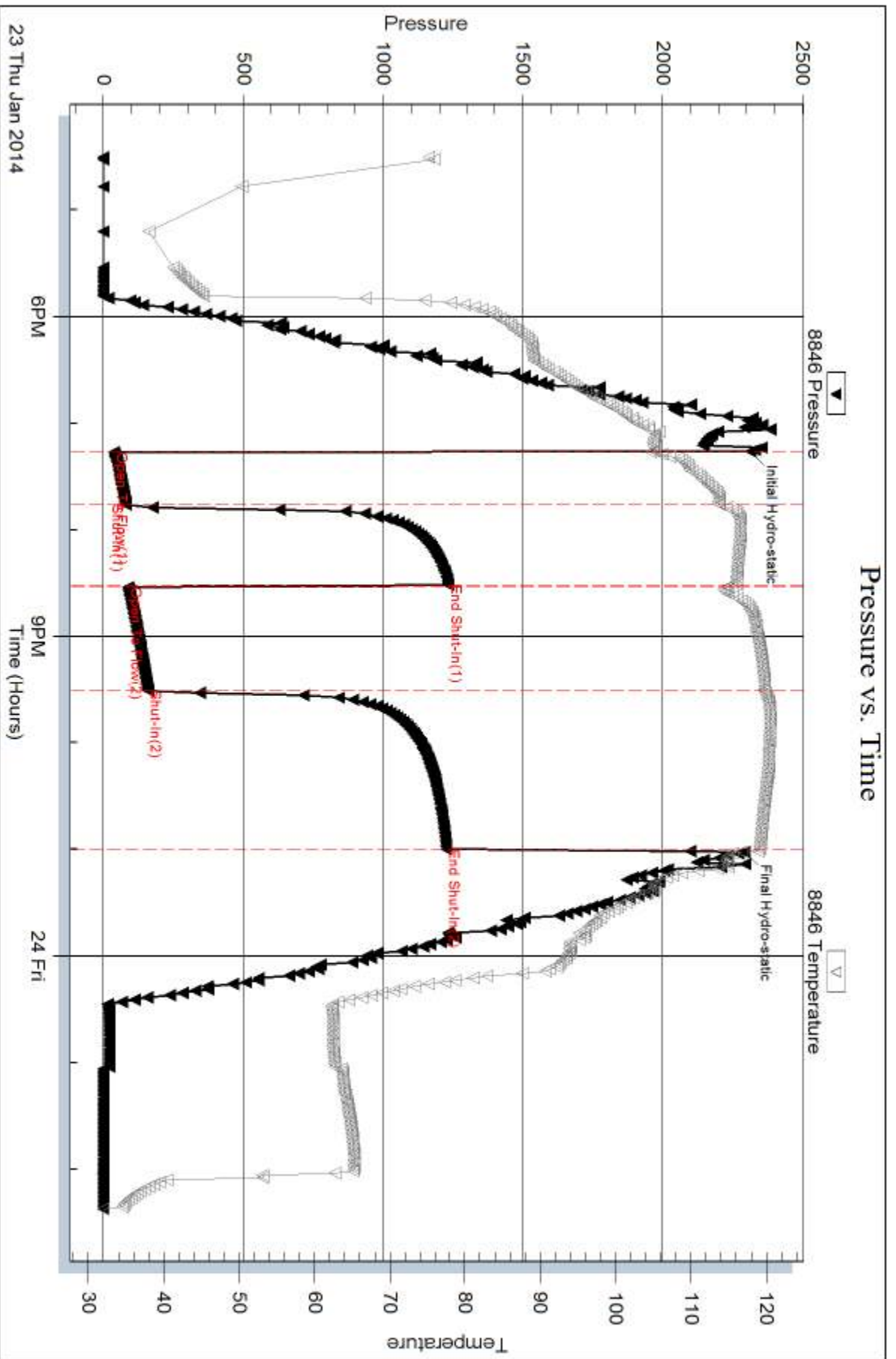
Length ft	Description	Volume bbl
0.00	GIP= 434 ft	0.000
124.00	gcom 10%g 20%o 70%m	1.466
248.00	gco 10%g 90%o	3.479

Total Length: 372.00 ft Total Volume: 4.945 bbl

Num Fluid Samples: 0 Num Gas Bombs: 0 Serial #:

Laboratory Name: Laboratory Location:

Recovery Comments: API= 24@80 corrected to 26 @ 60



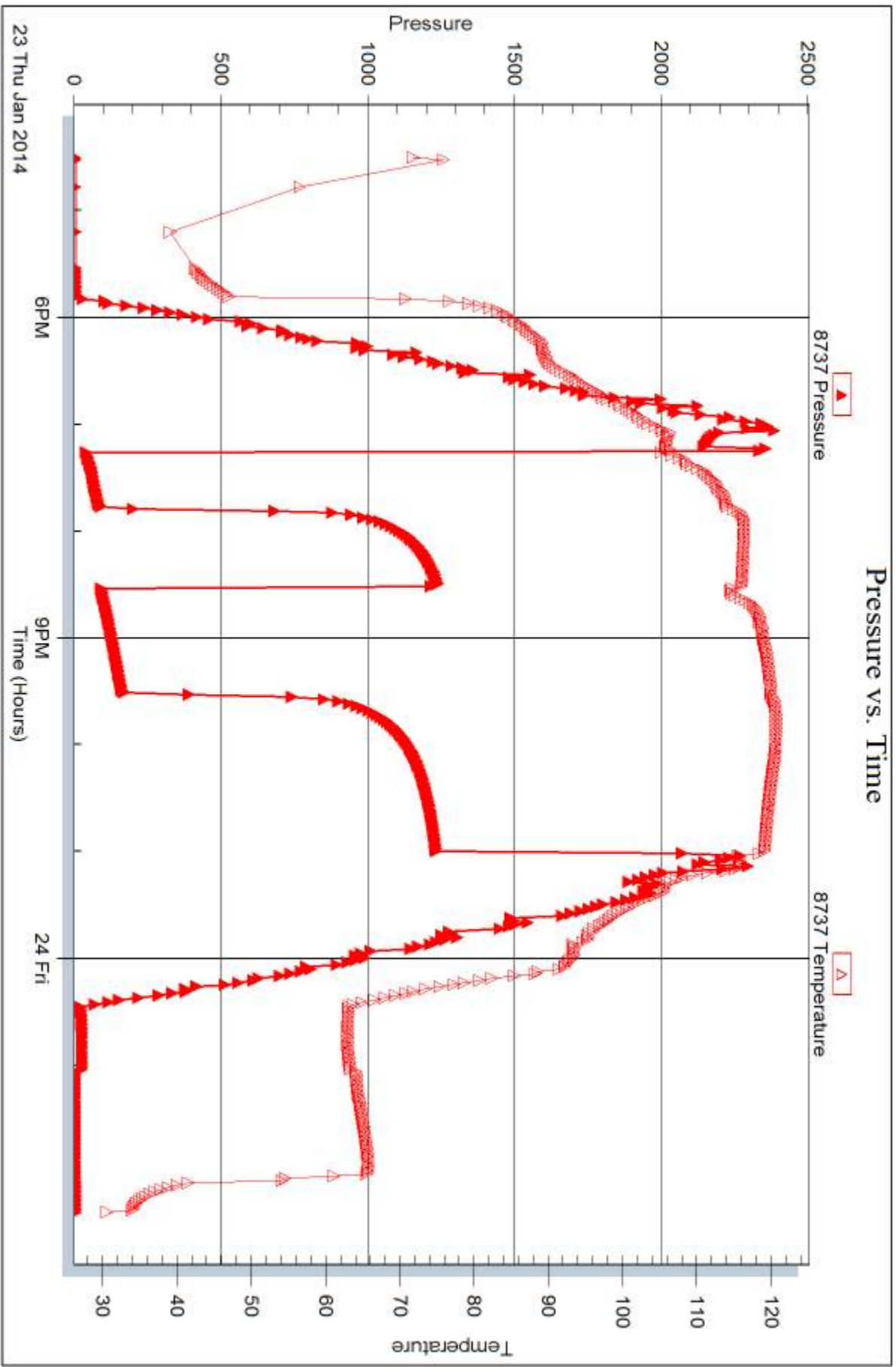
Serial #: 8737

Inside

Eagle Creek Corporation

Decker #1-20

DST Test Number: 3



Triobite Testing, Inc

Ref. No: 56738

Printed: 2014.01.27 @ 14:58:19



DRILL STEM TEST REPORT

Prepared For: **Eagle Creek Corporation**

8100 East 22nd. St. North
Building 1500 Suite A
Wichita KS 67226

ATTN: Dave Callawaert

Decker #1-20

20-17s-34w Scott,KS

Start Date: 2014.01.24 @ 14:27:15

End Date: 2014.01.24 @ 22:16:15

Job Ticket #: 56739 DST #: 4

Trilobite Testing, Inc
PO Box 362 Hays, KS 67601
ph: 785-625-4778 fax: 785-625-5620

Printed: 2014.01.27 @ 14:57:40



TRILOBITE TESTING, INC

DRILL STEM TEST REPORT

Eagle Creek Corporation
 8100 East 22nd.St. North
 Building 1500 Suite A
 Wichita KS 67226
 ATTN: Dave Callaw aert

20-17s-34w Scott,KS

Decker #1-20

Job Ticket: 56739

DST#: 4

Test Start: 2014.01.24 @ 14:27:15

GENERAL INFORMATION:

Formation: **Marmaton**

Deviated: No Whipstock: ft (KB)

Time Tool Opened: 16:55:00

Time Test Ended: 22:16:15

Test Type: Conventional Bottom Hole (Reset)

Tester: Mike Roberts

Unit No: 65

Interval: 4478.00 ft (KB) To 4503.00 ft (KB) (TVD)

Reference Elevations: 3078.00 ft (KB)

Total Depth: 4503.00 ft (KB) (TVD)

3069.00 ft (CF)

Hole Diameter: 7.88 inches Hole Condition: Fair

KB to GR/CF: 9.00 ft

Serial #: 8846 Outside

Press@RunDepth: 52.28 psig @ 4479.00 ft (KB)

Capacity: 8000.00 psig

Start Date: 2014.01.24

End Date:

2014.01.24

Last Calib.:

2014.01.24

Start Time: 14:27:15

End Time:

22:16:15

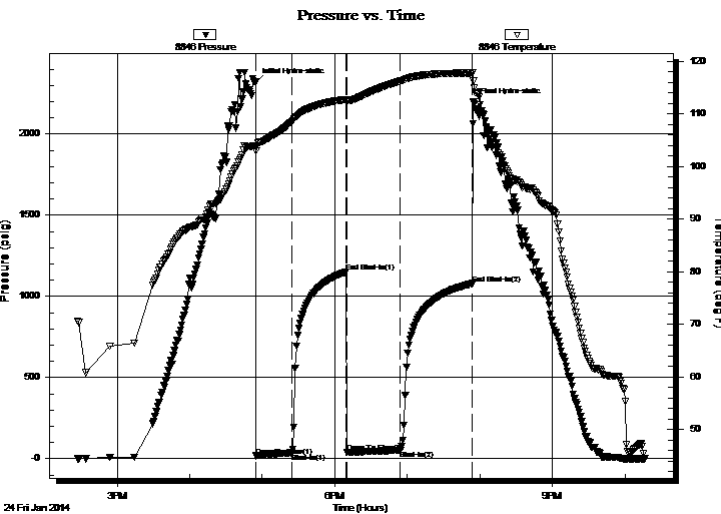
Time On Btm:

2014.01.24 @ 16:54:45

Time Off Btm:

2014.01.24 @ 19:54:45

TEST COMMENT: IF:Built to 2" blow
 IS:No return blow
 FF:Built to weak surface blow
 FS:No return blow



PRESSURE SUMMARY

Time (Min.)	Pressure (psig)	Temp (deg F)	Annotation
0	2316.33	103.83	Initial Hydro-static
1	17.13	103.03	Open To Flow (1)
30	35.68	108.55	Shut-In(1)
75	1150.78	112.71	End Shut-In(1)
75	38.46	112.47	Open To Flow (2)
120	52.28	116.21	Shut-In(2)
179	1078.81	117.74	End Shut-In(2)
180	2196.17	116.22	Final Hydro-static

Recovery

Length (ft)	Description	Volume (bbl)
90.00	mcsw 20% m 80 % sw	0.99

* Recovery from multiple tests

Gas Rates

	Choke (inches)	Pressure (psig)	Gas Rate (Mcf/d)



TRILOBITE
TESTING, INC

DRILL STEM TEST REPORT

Eagle Creek Corporation

8100 East 22nd.St. North
Building 1500 Suite A
Wichita KS 67226
ATTN: Dave Callaw aert

20-17s-34w Scott,KS

Decker #1-20

Job Ticket: 56739

DST#: 4

Test Start: 2014.01.24 @ 14:27:15

GENERAL INFORMATION:

Formation: **Marmaton**

Deviated: No Whipstock: ft (KB)

Time Tool Opened: 16:55:00

Time Test Ended: 22:16:15

Interval: **4478.00 ft (KB) To 4503.00 ft (KB) (TVD)**

Total Depth: 4503.00 ft (KB) (TVD)

Hole Diameter: 7.88 inchesHole Condition: Fair

Test Type: Conventional Bottom Hole (Reset)

Tester: Mike Roberts

Unit No: 65

Reference Elevations: 3078.00 ft (KB)

3069.00 ft (CF)

KB to GR/CF: 9.00 ft

Serial #: 8737 Inside

Press@RunDepth: psig @ 4479.00 ft (KB)

Start Date: 2014.01.24

End Date: 2014.01.24

Start Time: 14:27:15

End Time: 22:16:15

Capacity: 8000.00 psig

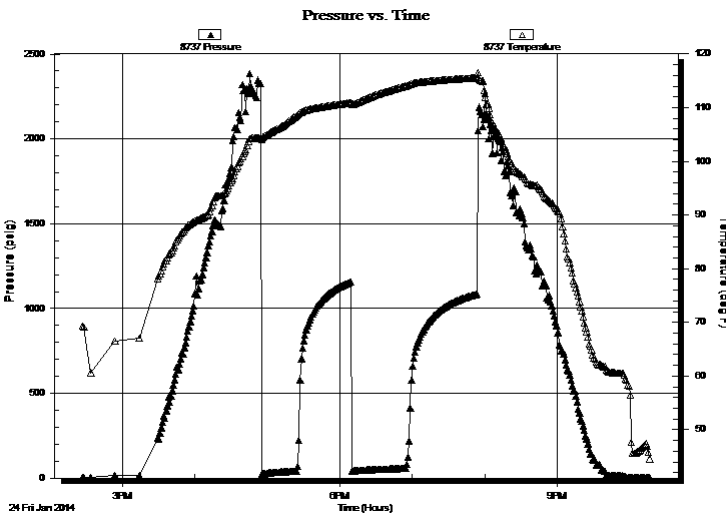
Last Calib.: 2014.01.24

Time On Btm:

Time Off Btm:

TEST COMMENT: IF: Built to 2" blow
IS: No return blow
FF: Built to weak surface blow
FS: No return blow

PRESSURE SUMMARY



Time (Min.)	Pressure (psig)	Temp (deg F)	Annotation

Recovery

Length (ft)	Description	Volume (bbl)
90.00	mcsw 20% m 80 % sw	0.99

Gas Rates

	Choke (inches)	Pressure (psig)	Gas Rate (Mcf/d)

* Recovery from multiple tests



**TRILOBITE
TESTING, INC**

DRILL STEM TEST REPORT

TOOL DIAGRAM

Eagle Creek Corporation

20-17s-34w Scott,KS

8100 East 22nd.St. North
Building 1500 Suite A
Wichita KS 67226
ATTN: Dave Callaw aert

Decker #1-20

Job Ticket: 56739

DST#: 4

Test Start: 2014.01.24 @ 14:27:15

Tool Information

Drill Pipe:	Length: 4440.00 ft	Diameter: 3.80 inches	Volume: 62.28 bbl	Tool Weight:	1500.00 lb
Heavy Wt. Pipe:	Length: 0.00 ft	Diameter: 0.00 inches	Volume: 0.00 bbl	Weight set on Packer:	25000.00 lb
Drill Collar:	Length: 30.00 ft	Diameter: 2.25 inches	Volume: 0.15 bbl	Weight to Pull Loose:	80000.00 lb
			<u>Total Volume: 62.43 bbl</u>	Tool Chased	0.00 ft
Drill Pipe Above KB:	20.00 ft			String Weight: Initial	62000.00 lb
Depth to Top Packer:	4478.00 ft			Final	62000.00 lb
Depth to Bottom Packer:	ft				
Interval between Packers:	25.00 ft				
Tool Length:	53.00 ft				
Number of Packers:	2	Diameter: 6.75 inches			

Tool Comments:

Tool Description

Tool Description	Length (ft)	Serial No.	Position	Depth (ft)	Accum. Lengths
Change Over Sub	1.00			4451.00	
Shut In Tool	5.00			4456.00	
Hydraulic tool	5.00			4461.00	
Jars	5.00			4466.00	
Safety Joint	3.00			4469.00	
Packer	5.00			4474.00	28.00 Bottom Of Top Packer
Packer	4.00			4478.00	
Stubb	1.00			4479.00	
Recorder	0.00	8737	Inside	4479.00	
Recorder	0.00	8846	Outside	4479.00	
Perforations	19.00			4498.00	
Bullnose	5.00			4503.00	25.00 Bottom Packers & Anchor

Total Tool Length: 53.00



**TRILOBITE
TESTING, INC**

DRILL STEM TEST REPORT

FLUID SUMMARY

Eagle Creek Corporation

20-17s-34w Scott,KS

8100 East 22nd.St. North
Building 1500 Suite A
Wichita KS 67226
ATTN: Dave Callaw aert

Decker #1-20

Job Ticket: 56739

DST#: 4

Test Start: 2014.01.24 @ 14:27:15

Mud and Cushion Information

Mud Type: Gel Chem

Cushion Type:

Oil API:

0 deg API

Mud Weight: 9.00 lb/gal

Cushion Length:

ft

Water Salinity:

14000 ppm

Viscosity: 50.00 sec/qt

Cushion Volume:

bbbl

Water Loss: 8.78 in³

Gas Cushion Type:

Resistivity: 8.80 ohm.m

Gas Cushion Pressure:

psig

Salinity: 4000.00 ppm

Filter Cake: 1.00 inches

Recovery Information

Recovery Table

Length ft	Description	Volume bbl
90.00	mcsw 20%m 80 % sw	0.989

Total Length: 90.00 ft Total Volume: 0.989 bbl

Num Fluid Samples: 0

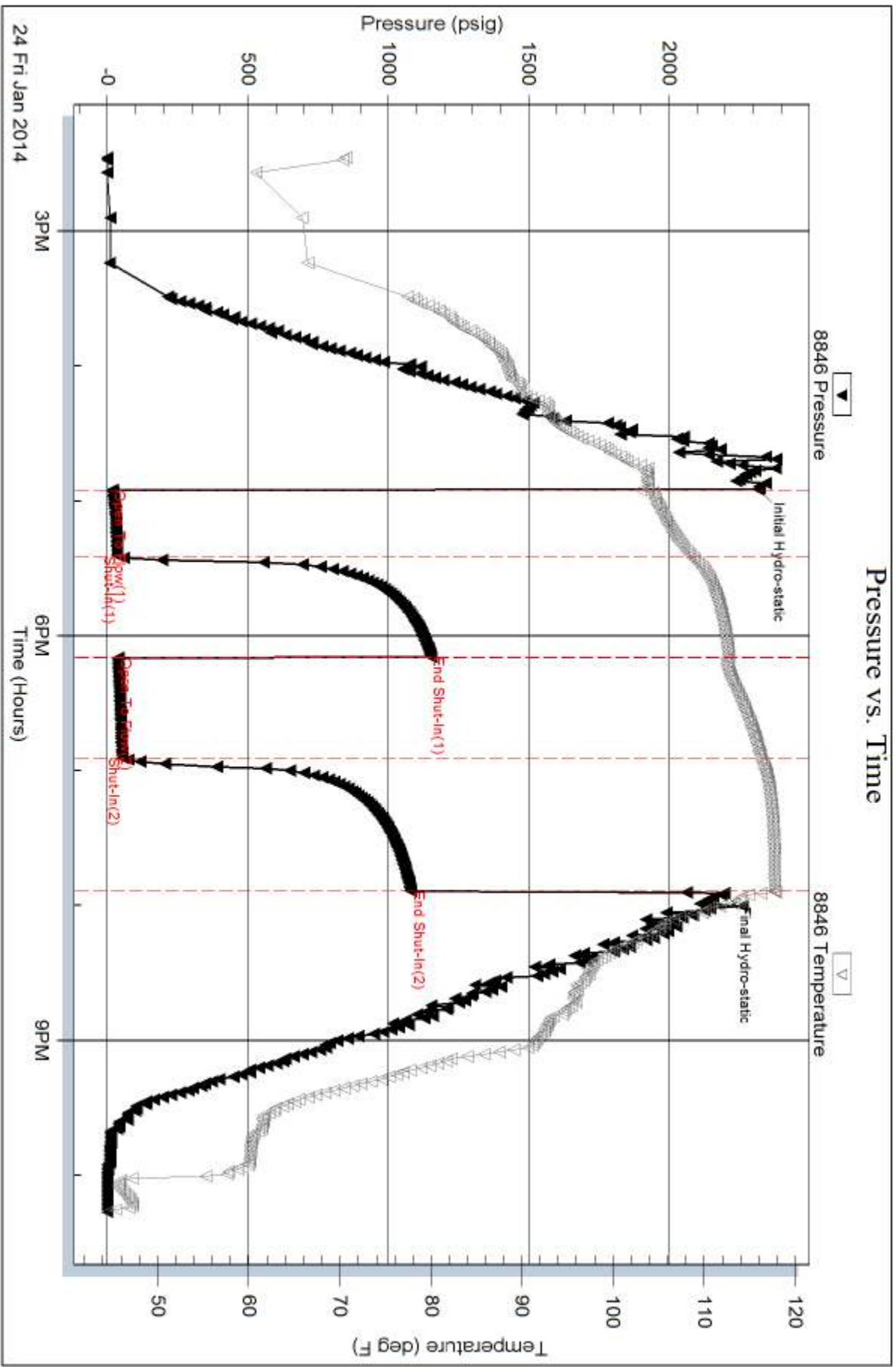
Num Gas Bombs: 0

Serial #:

Laboratory Name:

Laboratory Location:

Recovery Comments: RW= .833@ 42.5*=14,000 ppm



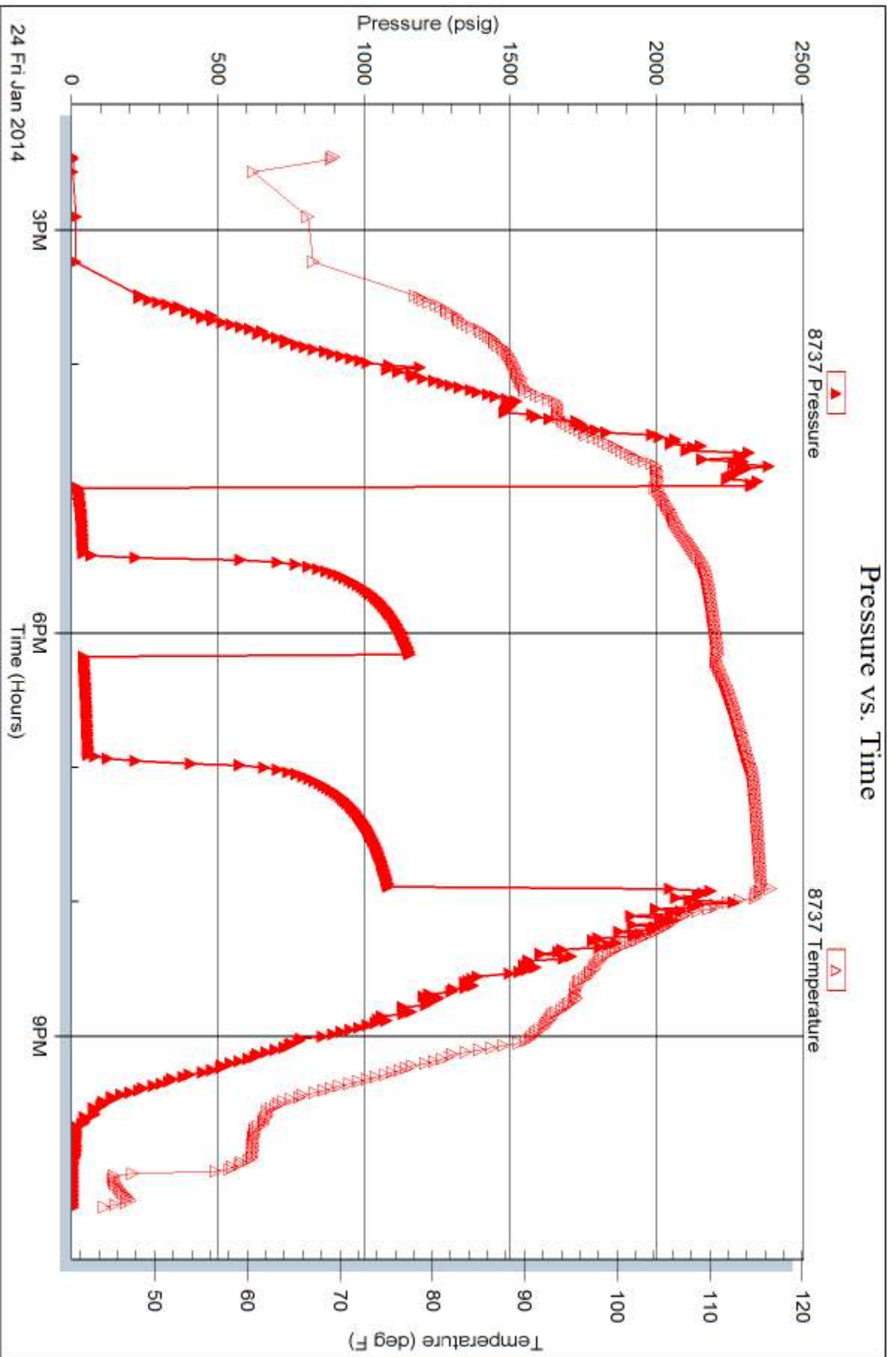
Serial #: 8737

Inside

Eagle Creek Corporation

Decker #1-20

DST Test Number: 4



Trilobite Testing, Inc

Ref. No: 56739

Printed: 2014.01.27 @ 14:57:43



TRILOBITE TESTING INC.

1515 Commerce Parkway • Hays, Kansas 67601

Test Ticket

NO. 56736

Well Name & No. Decker #1-20 Test No. 1 Date 1-21-14
 Company Eagle Creek Corporation Elevation 3078 KB 3069 GL
 Address 8100 East 22nd St. North Building 1500 Suite 4 Lurich KS 67226
 Co. Rep / Geo. Dave Callawaert Rig Val #4
 Location: Sec. 20 Twp. 17 Rge. 34 Co. SCOTT State KS

Interval Tested 4226-4260 Zone Tested I
 Anchor Length 34 Drill Pipe Run 4186 Mud Wt. 9.1
 Top Packer Depth 4221 Drill Collars Run 30 Vis 54
 Bottom Packer Depth 4226 Wt. Pipe Run 0 WL 8.0
 Total Depth 4260 Chlorides 4500 ppm System LCM 2
 Blow Description IF: Weak Surface Blow Died in 17 Min.
IS: NO Return Blow
FF: NO Blow
FS: NO Return Blow

Rec	Feet of	%gas	%oil	%water	%mud
<u>5</u>	<u>MUD with oil spots</u>			<u>100</u>	
Rec	Feet of	%gas	%oil	%water	%mud
Rec	Feet of	%gas	%oil	%water	%mud
Rec	Feet of	%gas	%oil	%water	%mud
Rec	Feet of	%gas	%oil	%water	%mud

Rec Total 5 BHT 107 Gravity _____ API RW _____ @ _____ °F Chlorides _____ ppm
 (A) Initial Hydrostatic 2086 Test 1250.00/- T-On Location 16:35
 (B) First Initial Flow 14 Jars 250.00/- T-Started 17:56
 (C) First Final Flow 20 Safety Joint 75.00/- T-Open 20:53
 (D) Initial Shut-In 966 Circ Sub NC T-Pulled 22:53
 (E) Second Initial Flow 21 Hourly Standby _____ T-Out 01:06
 (F) Second Final Flow 25 Mileage 6DRT 93.00/- Comments _____
 (G) Final Shut-In 830 Sampler _____
 (H) Final Hydrostatic 2025 Straddle _____ Ruined Shale Packer _____
 Shale Packer _____ Ruined Packer _____
 Extra Packer _____ Extra Copies _____
 Initial Open 30 Extra Recorder _____ Sub Total 0
 Initial Shut-In 30 Day Standby _____ Total 1668
 Final Flow 30 Accessibility _____ MP/DST Disc't _____
 Final Shut-In 30 Sub Total 9668.00/-

Approved By M. J. ... Our Representative Mike ...

Trilobite Testing Inc. shall not be liable for damaged of any kind of the property or personnel of the one for whom a test is made, or for any loss suffered or sustained, directly or indirectly, through the use of its equipment, or its statements or opinion concerning the results of any test, tools lost or damaged in the hole shall be paid for at cost by the party for whom the test is made.



TRILOBITE TESTING INC.

1515 Commerce Parkway • Hays, Kansas 67601

Test Ticket

NO. **56737**

Well Name & No. Decker # 1-20 Test No. 2 Date 1-22-14
 Company Eagle Creek Corporation Elevation 3078 KB 3069 GL
 Address 8100 East 22nd St. North Building 1500 Suite A Wichita KS 67226
 Co. Rep / Geo. Mike Maunc Rig Val #4
 Location: Sec. 20 Twp. 17 Rge. 34 Co. SCOTT State KS

Interval Tested 4378 - 4460 Zone Tested Marmaton
 Anchor Length 02' Drill Pipe Run 4349 Mud Wt. 9.4
 Top Packer Depth 4374 Drill Collars Run 30 Vis 54
 Bottom Packer Depth 4378 Wt. Pipe Run 0 WL 8.0
 Total Depth 4460 Chlorides 7000 ppm System LCM 2
 Blow Description IF: Built to 1/8" Blow
IS: NO Return Blow
FF: NO Blow
FS: NO Return Blow

Rec	Feet of	%gas	%oil	%water	%mud
<u>70</u>	<u>mud with oil spots</u>			<u>100</u>	
Rec	Feet of	%gas	%oil	%water	%mud
Rec	Feet of	%gas	%oil	%water	%mud
Rec	Feet of	%gas	%oil	%water	%mud

Rec Total 70 BHT 112 Gravity _____ API RW _____ @ _____ °F Chlorides _____ ppm

(A) Initial Hydrostatic <u>2274</u>	<input checked="" type="checkbox"/> Test 1250	T-On Location <u>21:40</u>
(B) First Initial Flow <u>71</u>	<input checked="" type="checkbox"/> Jars 250	T-Started <u>23:42</u>
(C) First Final Flow <u>78</u>	<input checked="" type="checkbox"/> Safety Joint 75	T-Open <u>01:55</u>
(D) Initial Shut-In <u>1251</u>	<input checked="" type="checkbox"/> Circ Sub <u>NC</u>	T-Pulled <u>04:25</u>
(E) Second Initial Flow <u>80</u>	<input checked="" type="checkbox"/> Hourly Standby	T-Out <u>06:53</u>
(F) Second Final Flow <u>87</u>	<input checked="" type="checkbox"/> Mileage <u>60 RT</u> 93	Comments _____
(G) Final Shut-In <u>1204</u>	<input type="checkbox"/> Sampler	<input type="checkbox"/> Ruined Shale Packer
(H) Final Hydrostatic <u>2282</u>	<input type="checkbox"/> Straddle	<input type="checkbox"/> Ruined Packer
Initial Open <u>30</u>	<input type="checkbox"/> Shale Packer	<input type="checkbox"/> Extra Copies
Initial Shut-In <u>45</u>	<input type="checkbox"/> Extra Packer	Sub Total <u>0</u>
Final Flow <u>30</u>	<input type="checkbox"/> Extra Recorder	Total <u>1668</u>
Final Shut-In <u>45</u>	<input type="checkbox"/> Day Standby	MP/DST Disc't _____
	<input type="checkbox"/> Accessibility	
	Sub Total <u>1668</u>	

Approved By Mike & Maunc Our Representative Mike Roberts

TriLOBITE Testing Inc. shall not be liable for damaged of any kind of the property or personnel of the one for whom a test is made, or for any loss suffered or sustained, directly or indirectly, through the use of its equipment, or its statements or opinion concerning the results of any test, tools lost or damaged in the hole shall be paid for at cost by the party for whom the test is made.



TRIBOLITE TESTING INC.

1515 Commerce Parkway • Hays, Kansas 67601

Test Ticket

NO. 56738

Well Name & No. Decker #1-20 Test No. 3 Date 1-23-14
 Company Eagle Creek Corporation Elevation 3078 KB 3069 GL
 Address 8100 East 29th St. North Building 1520 Suite A, Wichita KS 67226
 Co. Rep / Geo. Mike Maurer Rig Val #4
 Location: Sec. 20 Twp. 17 Rge. 34 Co. SCOTT State KS

Interval Tested 4456-4480 Zone Tested Marmaton
 Anchor Length ~~4452~~ 24' Drill Pipe Run 4428 Mud Wt. 9.4
 Top Packer Depth ~~4452~~ 4452 Drill Collars Run 30 Vis 54
 Bottom Packer Depth 4456 Wt. Pipe Run 0 WL 8.0
 Total Depth 4480 Chlorides 7000 ppm System LCM 2

Blow Description IF: BOB IN 11 Min
IS: Return Blow Built to 5"
FF: BOB IN 15 Min
FS: Return Blow Built to 9"

Rec	Feet of	%gas	%oil	%water	%mud
<u>0</u>	<u>434 GIP</u>	<u>100</u>			
<u>248</u>	<u>900</u>	<u>10</u>	<u>90</u>		
<u>124</u>	<u>900 M</u>	<u>10</u>	<u>20</u>		<u>70</u>
<u>124</u>					

Rec Total 372 BHT 119 Gravity 26 API RW — @ — °F Chlorides — ppm

(A) Initial Hydrostatic 2313 Test 1250 T-On Location 14:50
 (B) First Initial Flow 36 Jars 250 T-Started 16:30
 (C) First Final Flow 79 Safety Joint 75 T-Open 19:07
 (D) Initial Shut-In 1234 Circ Sub NC T-Pulled 22:52
 (E) Second Initial Flow 88 Hourly Standby T-Out 02:22
 (F) Second Final Flow 159 Mileage 60 RT 93 Comments _____
 (G) Final Shut-In 1227 Sampler _____
 (H) Final Hydrostatic 2291 Straddle _____
 Shale Packer _____
 Ruined Shale Packer _____

Initial Open 30 Extra Packer _____
 Initial Shut-In 45 Extra Recorder _____
 Final Flow 60 Day Standby _____
 Final Shut-In 90 Accessibility _____
 Sub Total 1668 MP/DST Disc't _____

Approved By Michael K Maurer Our Representative Mike Roberts

Tribolite Testing Inc. shall not be liable for damaged of any kind of the property or personnel of the one for whom a test is made, or for any loss suffered or sustained, directly or indirectly, through the use of its equipment, or its statements or opinion concerning the results of any test, tools lost or damaged in the hole shall be paid for at cost by the party for whom the test is made.



TRILOBITE TESTING INC.

1515 Commerce Parkway • Hays, Kansas 67601

Test Ticket

NO. 56739

Well Name & No. Decker #1-20 Test No. 4 Date 1-24-14
 Company Eagle Creek Corporation Elevation 3078 KB 3069 GL
 Address 8100 EAST St North Building 1500 Suite A Wichita KS 67226
 Co. Rep / Geo. _____ Rig Val #4
 Location: Sec. _____ Twp. _____ Rge. _____ Co. Scott State KS

Interval Tested 4478-4503 Zone Tested Marmaton
 Anchor Length 25 Drill Pipe Run 4440 Mud Wt. 9.4
 Top Packer Depth 4474 Drill Collars Run 30 Vis 50
 Bottom Packer Depth 4478 Wt. Pipe Run Ø WL 8.8
 Total Depth 4503 Chlorides 4000 ppm System LCM 1

Blow Description IF: Built to 2" Blow
FS: No Return Blow
FF: Built to Weak Surface Blow
FS: No Return Blow

Rec	Feet of	%gas	%oil	%water	%mud
<u>90</u>	<u>MCSW</u>		<u>80</u>	<u>20</u>	
Rec	Feet of	%gas	%oil	%water	%mud
Rec	Feet of	%gas	%oil	%water	%mud
Rec	Feet of	%gas	%oil	%water	%mud
Rec	Feet of	%gas	%oil	%water	%mud

Rec Total 90 BHT 117 Gravity _____ API RW 833 @ 42.5°F Chlorides 14,000 ppm

(A) Initial Hydrostatic 2316 Test 1250 T-On Location 14:25
 (B) First Initial Flow 17 Jars 250 T-Started 14:27
 (C) First Final Flow 35 Safety Joint 75 T-Open 16:55
 (D) Initial Shut-In 1150 Circ Sub NC T-Pulled 19:55
 (E) Second Initial Flow 38 Hourly Standby _____ T-Out 22:16
 (F) Second Final Flow 52 Mileage 60 RT X 2 186 Comments Loaded Tools
 (G) Final Shut-In 1078 Sampler _____ 1-26-13:00 hrs
 (H) Final Hydrostatic 2196 Straddle _____ Ruined Shale Packer _____
 Shale Packer _____ Ruined Packer _____
 Extra Packer _____ Extra Copies _____

Initial Open 30
 Initial Shut-In 45
 Final Flow 45
 Final Shut-In 60
 Day Standby 1-26-14 Loaded Tools
 Accessibility 1d 14.75h tools
 Sub Total 1761
 Sub Total 800
 Total 2561
 MP/DST Disc't _____

Approved By Michael K. Mann Our Representative Mike Roberts

Trilobite Testing Inc. shall not be liable for damaged of any kind of the property or personnel of the one for whom a test is made, or for any loss suffered or sustained, directly or indirectly, through the use of its equipment, or its statements or opinion concerning the results of any test, tools lost or damaged in the hole shall be paid for at cost by the party for whom the test is made.